

## Product datasheet for **UM500102**

### GRF2 (RAPGEF1) Mouse Monoclonal Antibody [Clone ID: UMAB140]

#### Product data:

Product Type:	Primary Antibodies
Clone Name:	UMAB140
Applications:	10k-ChIP, IF, IHC, WB
Recommended Dilution:	IHC 1:100~200
Reactivity:	Human, Mouse, Rat
Host:	Mouse
Isotype:	IgG1
Clonality:	Monoclonal
Immunogen:	Full length human recombinant protein of human RAPGEF1(NP_941372) produced in HEK293T cell.
Formulation:	PBS (pH 7.3) containing 1% BSA, 50% glycerol and 0.02% sodium azide.
Concentration:	0.5~1.0 mg/ml (Lot Dependent)
Purification:	Purified from mouse ascites fluids or tissue culture supernatant by affinity chromatography (protein A/G)
Conjugation:	Unconjugated
Storage:	Store at -20°C as received.
Stability:	Stable for 12 months from date of receipt.
Gene Name:	Rap guanine nucleotide exchange factor 1
Database Link:	<a href="#">NP_941372</a> <a href="#">Entrez Gene 107746 Mouse</a> <a href="#">Entrez Gene 63881 Rat</a> <a href="#">Entrez Gene 2889 Human</a> <a href="#">Q13905</a>
Background:	This gene encodes a human guanine nucleotide exchange factor. It transduces signals from CRK by binding the SH3 domain of CRK, and activating several members of the Ras family of GTPases. This signaling cascade that may be involved in apoptosis, integrin-mediated signal transduction, and cell transformation. Several alternatively spliced transcript variants of this gene have been described, but the full-length nature of some variants has not been determined. [provided by RefSeq, Jul 2008]
Synonyms:	C3G; GRF2

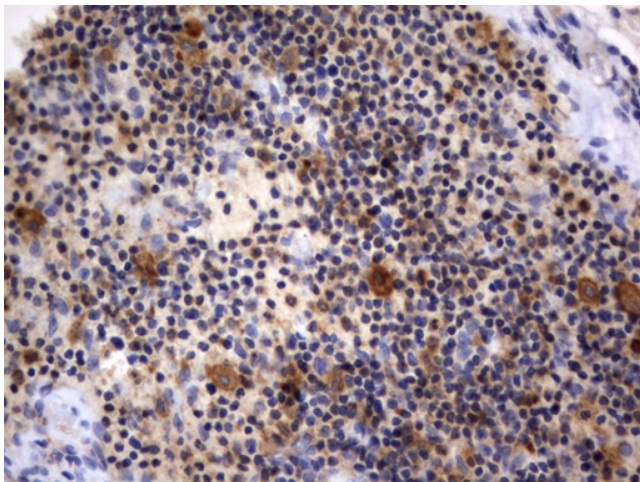


[View online »](#)

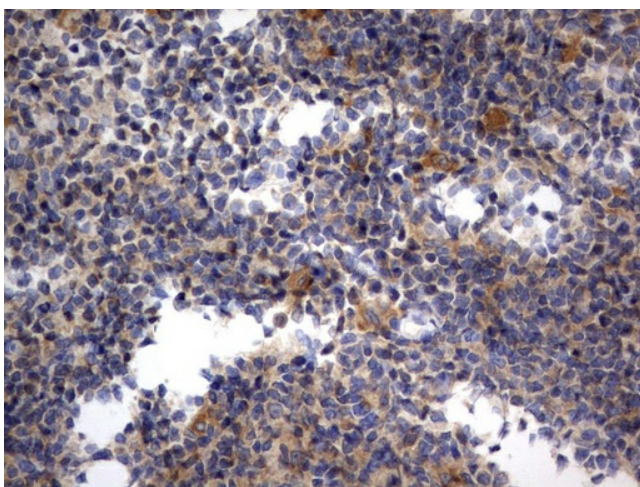
**Protein Families:** Druggable Genome

**Protein Pathways:** Focal adhesion, Insulin signaling pathway, Neurotrophin signaling pathway, Renal cell carcinoma

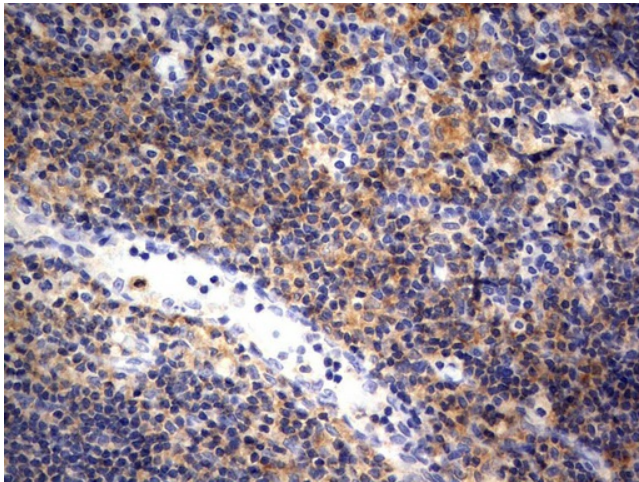
**Product images:**



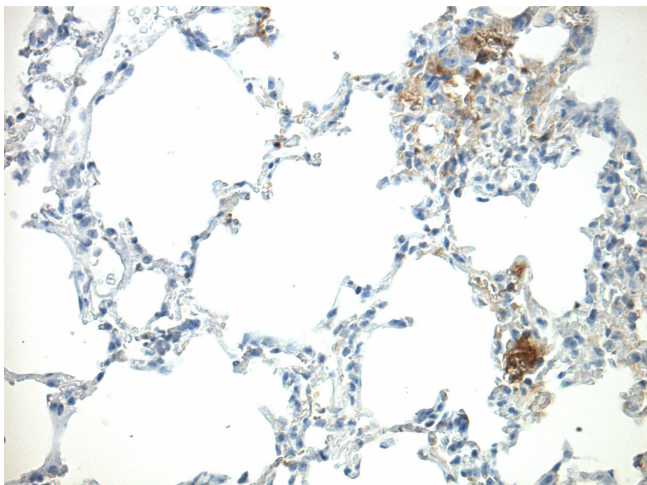
Immunohistochemical staining of paraffin-embedded Human lymph node tissue using anti-RAPGEF1 mouse monoclonal antibody. (UM500102, heat-induced epitope retrieval by 1mM EDTA in 10mM Tris, pH8.0, 120°C for 3min)



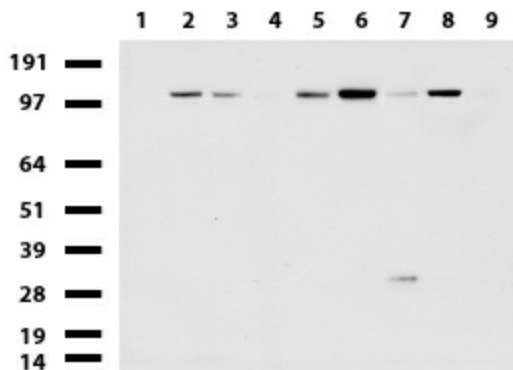
Immunohistochemical staining of paraffin-embedded Human lymphoma tissue using anti-RAPGEF1 mouse monoclonal antibody. (UM500102, heat-induced epitope retrieval by 1mM EDTA in 10mM Tris, pH8.0, 120°C for 3min)



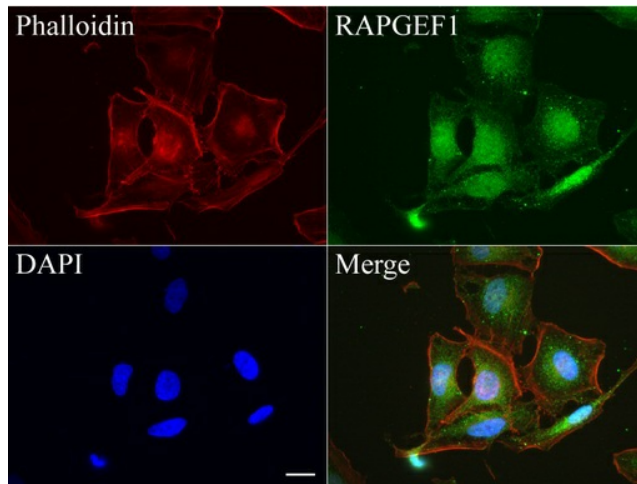
Immunohistochemical staining of paraffin-embedded Human tonsil using anti-RAPGEF1 mouse monoclonal antibody. (UM500102, heat-induced epitope retrieval by 1mM EDTA in 10mM Tris, pH8.0, 120°C for 3min)



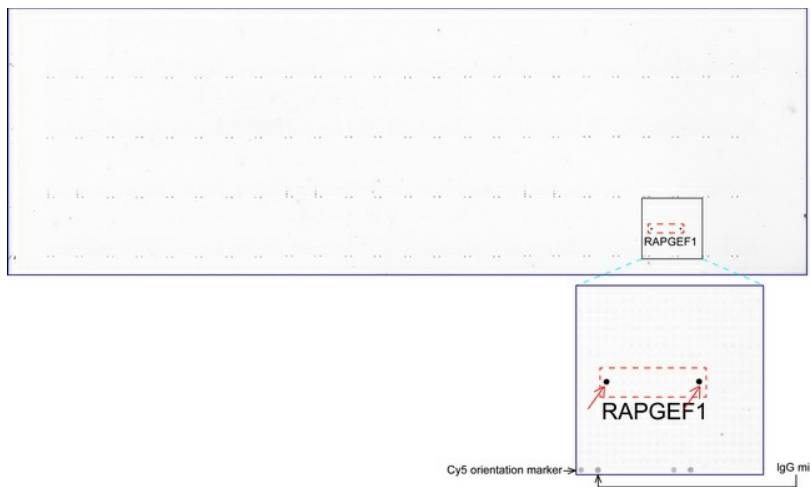
Immunohistochemical staining of paraffin-embedded mouse lung tissue using anti-RAPGEF clone UMAB140 mouse monoclonal antibody. HIER ACCEL buffer ([B22C-125]) (pH8.7) at 110C for 10 min, UM500102 (1:100). Detection was done with Klear Mouse (C/N [D52-18]) DAB Kit.



Western blot of cell lysates (35ug) from 9 different cell lines (1: HepG2, 2: HeLa, 3: SV-T2, 4: A549, 5: COS7, 6: Jurkat, 7: MDCK, 8: PC-12, 9: MCF7).



Immunofluorescent staining of HeLa cells using anti-RAPGEF1 mouse monoclonal antibody (UM500102, green, 1:50). Actin filaments were labeled with Alexa Fluor® 594 Phalloidin (red), and nuclear with DAPI (blue). Scale bar, 20µm.



OriGene overexpression protein microarray chip was immunostained with UltraMAB anti-RAPGEF1 mouse monoclonal antibody (UM500102). The positive reactive proteins are highlighted with two red arrows in the enlarged subarray. All the positive controls spotted in this subarray are also labeled for clarification.