

Product datasheet for **UM500099CF**

CD44 Mouse Monoclonal Antibody [Clone ID: UMAB134]

Product data:

Product Type:	Primary Antibodies
Clone Name:	UMAB134
Applications:	IF, IHC, WB
Recommended Dilution:	IHC 1:500
Reactivity:	Human
Host:	Mouse
Isotype:	IgG1
Clonality:	Monoclonal
Immunogen:	Full length human recombinant protein of human CD44(NP_000601) produced in HEK293T cell.
Formulation:	Lyophilized powder (original buffer 1X PBS, pH 7.3, 8% trehalose)
Reconstitution Method:	For reconstitution, we recommend adding 100uL distilled water to a final antibody concentration of about 1 mg/mL. To use this carrier-free antibody for conjugation experiment, we strongly recommend performing another round of desalting process. (OriGene recommends Zeba Spin Desalting Columns, 7KMWCO from Thermo Scientific)
Purification:	Purified from mouse ascites fluids or tissue culture supernatant by affinity chromatography (protein A/G)
Conjugation:	Unconjugated
Storage:	Store at -20°C as received.
Stability:	Stable for 12 months from date of receipt.
Gene Name:	CD44 molecule (Indian blood group)
Database Link:	NP_000601 Entrez Gene 960 Human P16070



[View online »](#)

Background:

The protein encoded by this gene is a cell-surface glycoprotein involved in cell-cell interactions, cell adhesion and migration. It is a receptor for hyaluronic acid (HA) and can also interact with other ligands, such as osteopontin, collagens, and matrix metalloproteinases (MMPs). This protein participates in a wide variety of cellular functions including lymphocyte activation, recirculation and homing, hematopoiesis, and tumor metastasis. Transcripts for this gene undergo complex alternative splicing that results in many functionally distinct isoforms, however, the full length nature of some of these variants has not been determined. Alternative splicing is the basis for the structural and functional diversity of this protein, and may be related to tumor metastasis. [provided by RefSeq, Jul 2008]

Synonyms:

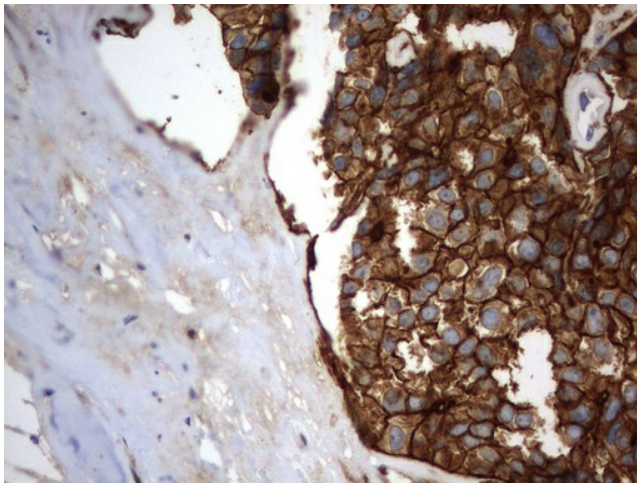
CDW44; CSPG8; ECMR-III; HCELL; HUTCH-I; IN; LHR; MC56; MDU2; MDU3; MIC4; Pgp1

Protein Families:

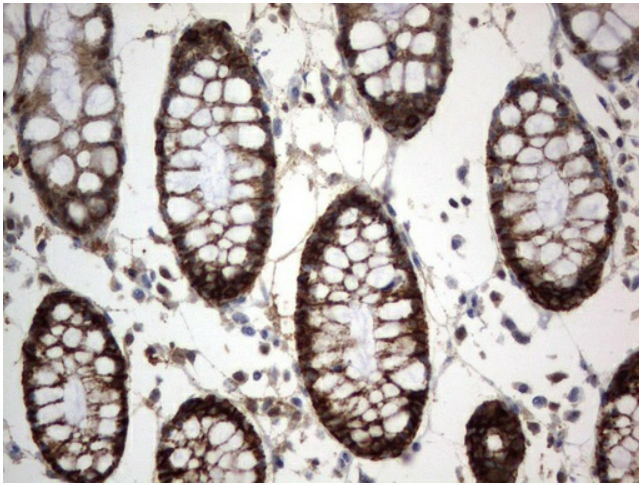
Adult stem cells, Cancer stem cells, Druggable Genome, Embryonic stem cells, ES Cell Differentiation/IPS, Stem cell relevant signaling - DSL/Notch pathway, Transmembrane

Protein Pathways:

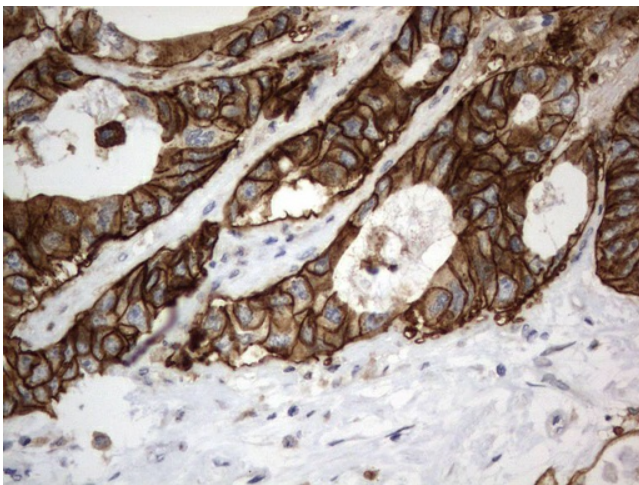
ECM-receptor interaction, Hematopoietic cell lineage

Product images:

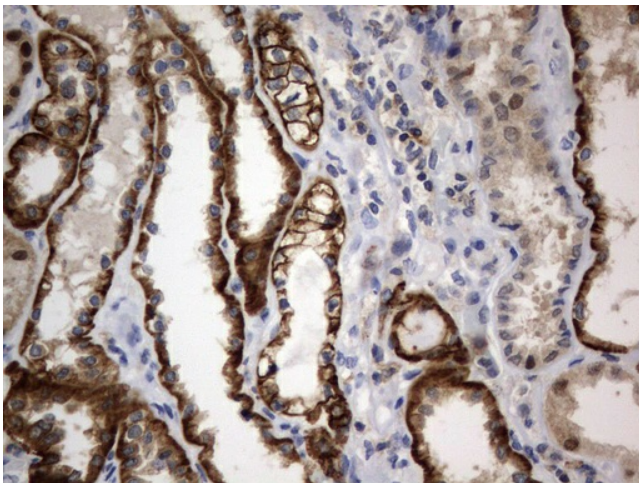
Immunohistochemical staining of paraffin-embedded Adenocarcinoma of Human breast tissue using anti-CD44 mouse monoclonal antibody. ([UM500099]; heat-induced epitope retrieval by 10mM citric buffer, pH6.0, 120°C for 3min) (1:500).



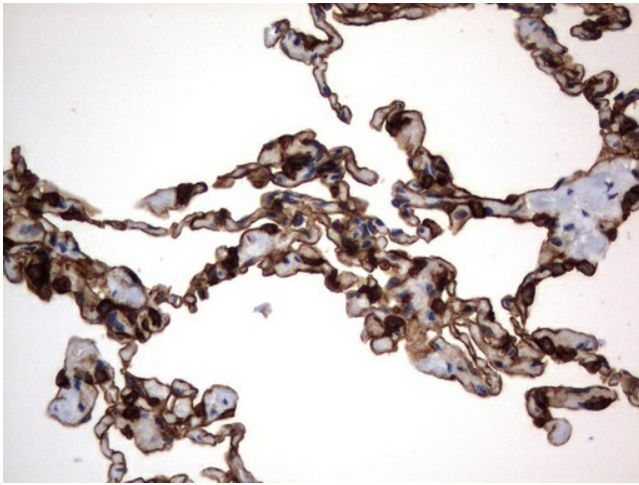
Immunohistochemical staining of paraffin-embedded Human colon tissue using anti-CD44 mouse monoclonal antibody. ([UM500099]; heat-induced epitope retrieval by 10mM citric buffer, pH6.0, 120°C for 3min) (1:500).



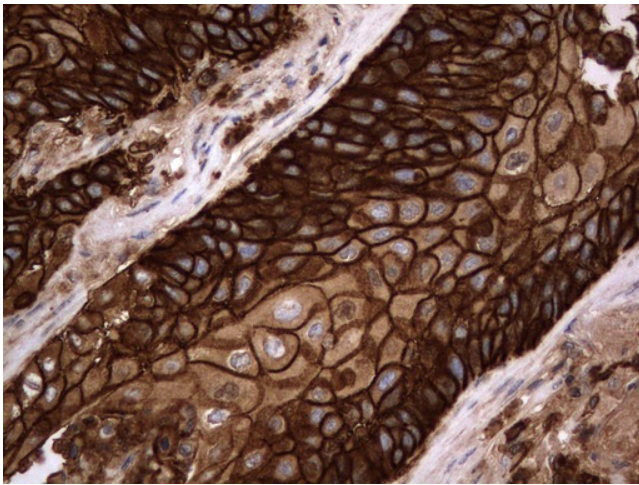
Immunohistochemical staining of paraffin-embedded Adenocarcinoma of Human colon tissue using anti-CD44 mouse monoclonal antibody. ([UM500099]; heat-induced epitope retrieval by 10mM citric buffer, pH6.0, 120°C for 3min) (1:500).



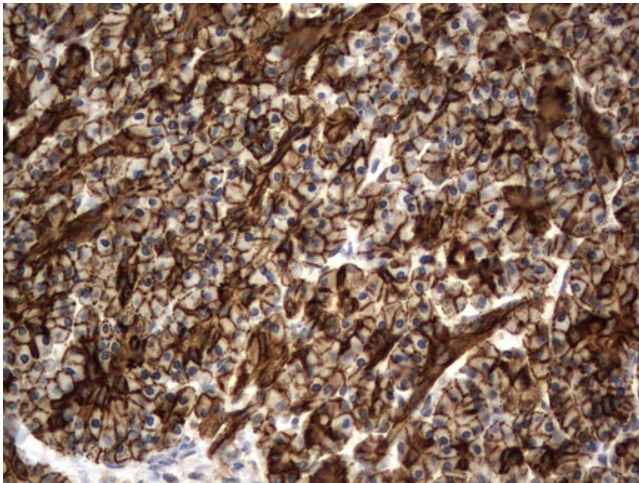
Immunohistochemical staining of paraffin-embedded Human Kidney tissue using anti-CD44 mouse monoclonal antibody. ([UM500099]; heat-induced epitope retrieval by 10mM citric buffer, pH6.0, 120°C for 3min) (1:500).



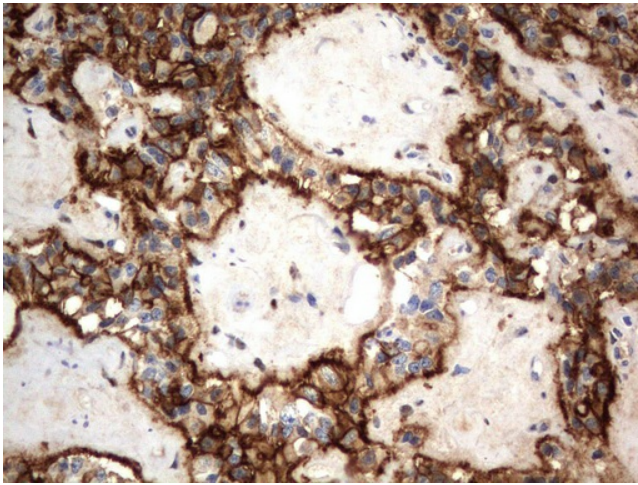
Immunohistochemical staining of paraffin-embedded Human lung tissue using anti-CD44 mouse monoclonal antibody. ([UM500099]; heat-induced epitope retrieval by 10mM citric buffer, pH6.0, 120°C for 3min) (1:500).



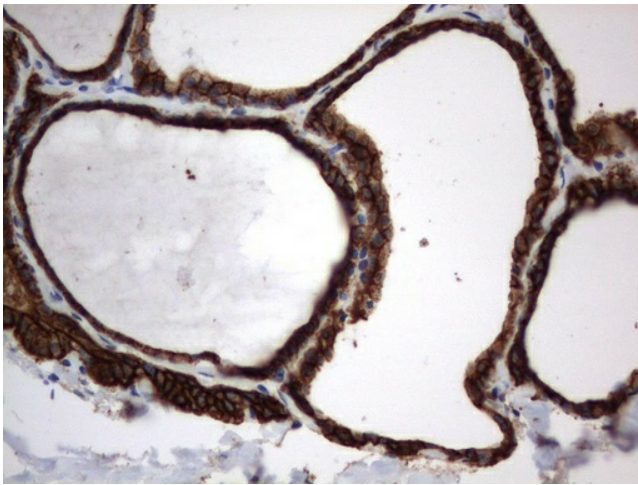
Immunohistochemical staining of paraffin-embedded Carcinoma of Human lung tissue using anti-CD44 mouse monoclonal antibody. ([UM500099]; heat-induced epitope retrieval by 10mM citric buffer, pH6.0, 120°C for 3min) (1:500).



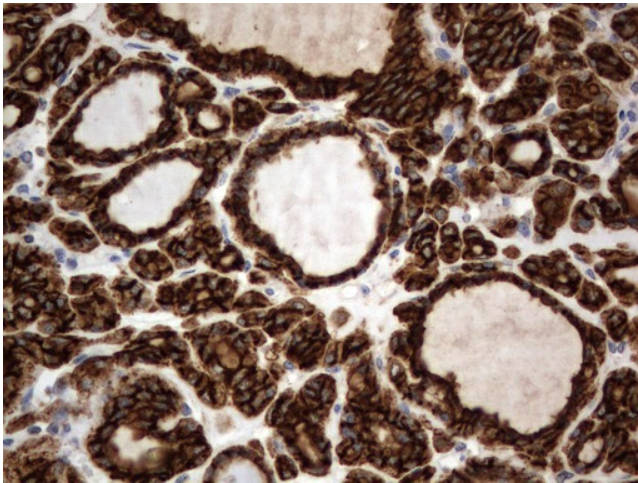
Immunohistochemical staining of paraffin-embedded Human pancreas tissue using anti-CD44 mouse monoclonal antibody. ([UM500099]; heat-induced epitope retrieval by 10mM citric buffer, pH6.0, 120°C for 3min) (1:500).



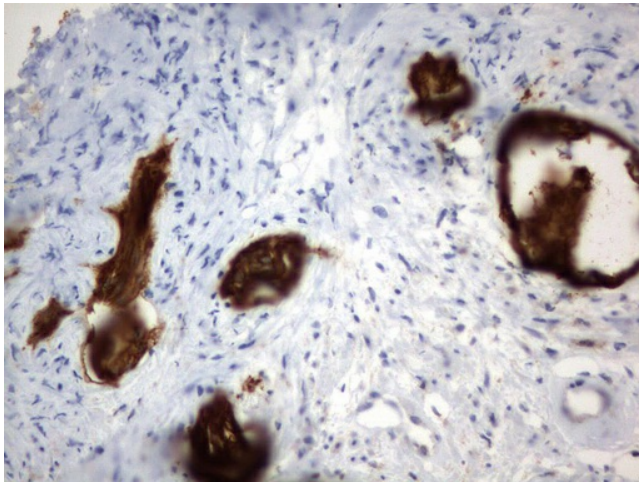
Immunohistochemical staining of paraffin-embedded Carcinoma of Human pancreas tissue using anti-CD44 mouse monoclonal antibody. ([UM500099]; heat-induced epitope retrieval by 10mM citric buffer, pH6.0, 120°C for 3min) (1:500).



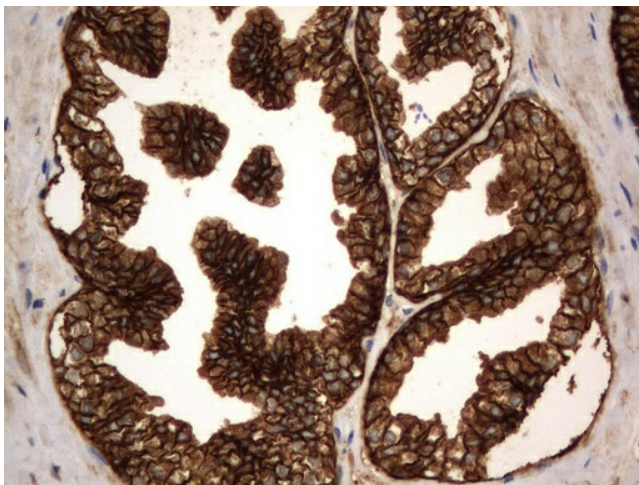
Immunohistochemical staining of paraffin-embedded Human thyroid tissue using anti-CD44 mouse monoclonal antibody. ([UM500099]; heat-induced epitope retrieval by 10mM citric buffer, pH6.0, 120°C for 3min) (1:500).



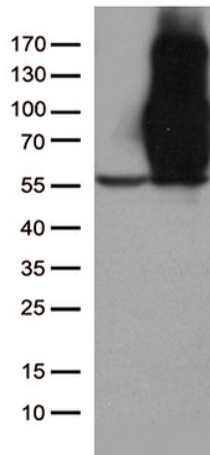
Immunohistochemical staining of paraffin-embedded Carcinoma of Human thyroid tissue using anti-CD44 mouse monoclonal antibody. ([UM500099]; heat-induced epitope retrieval by 10mM citric buffer, pH6.0, 120°C for 3min) (1:500).



Immunohistochemical staining of paraffin-embedded Human prostate tissue using anti-CD44 mouse monoclonal antibody. ([UM500099]; heat-induced epitope retrieval by 10mM citric buffer, pH6.0, 120°C for 3min) (1:500).



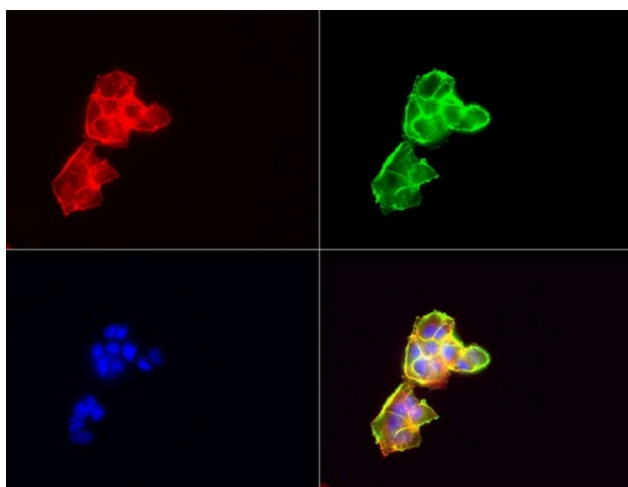
Immunohistochemical staining of paraffin-embedded Carcinoma of Human prostate tissue using anti-CD44 mouse monoclonal antibody. ([UM500099]; heat-induced epitope retrieval by 10mM citric buffer, pH6.0, 120°C for 3min) (1:500).



HEK293T cells were transfected with the pCMV6-ENTRY control (Left lane) or pCMV6-ENTRY CD44 ([RC221771], Right lane) cDNA for 48 hrs and lysed. Equivalent amounts of cell lysates were separated by SDS-PAGE and immunoblotted with anti-CD44 (1:500).



Western blot of human tissue lysates (15ug) from 10 different tissues (1: Testis, 2: Omentum, 3: Uterus, 4: Breast, 5: Brain, 6: Liver, 7: Ovary, 8: Thyroid, 9: Colon, 10: Spleen). Dilution: 1:500.



Immunofluorescent staining of MCF-7 cells using anti-CD44 mouse monoclonal antibody ([UM500099], green, 1:100). Actin filaments were labeled with TRITC-phalloidin (red), and nuclear with DAPI (blue).