

## Product datasheet for **UM500097**

### EPCAM Mouse Monoclonal Antibody [Clone ID: UMAB132]

#### Product data:

Product Type:	Primary Antibodies
Clone Name:	UMAB132
Applications:	10k-ChIP, IHC, WB
Recommended Dilution:	WB 1:4000, IHC 1:100~200
Reactivity:	Human
Host:	Mouse
Isotype:	IgG1
Clonality:	Monoclonal
Immunogen:	Full length human recombinant protein of human EPCAM(NP_002345) produced in HEK293T cell.
Formulation:	PBS (pH 7.3) containing 1% BSA, 50% glycerol and 0.02% sodium azide.
Concentration:	0.5~1.0 mg/ml (Lot Dependent)
Purification:	Purified from mouse ascites fluids or tissue culture supernatant by affinity chromatography (protein A/G)
Conjugation:	Unconjugated
Storage:	Store at -20°C as received.
Stability:	Stable for 12 months from date of receipt.
Gene Name:	epithelial cell adhesion molecule
Database Link:	<a href="#">NP_002345</a> <a href="#">Entrez Gene 4072 Human</a> <a href="#">P16422</a>
Background:	This gene encodes a carcinoma-associated antigen and is a member of a family that includes at least two type I membrane proteins. This antigen is expressed on most normal epithelial cells and gastrointestinal carcinomas and functions as a homotypic calcium-independent cell adhesion molecule. The antigen is being used as a target for immunotherapy treatment of human carcinomas. Mutations in this gene result in congenital tufting enteropathy. [provided by RefSeq, Dec 2008]

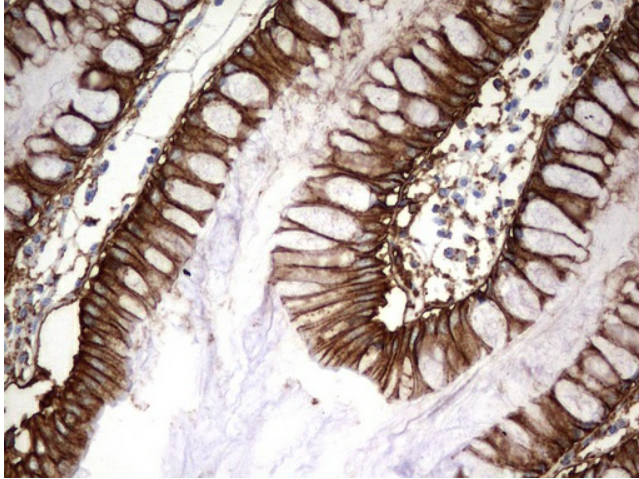


[View online »](#)

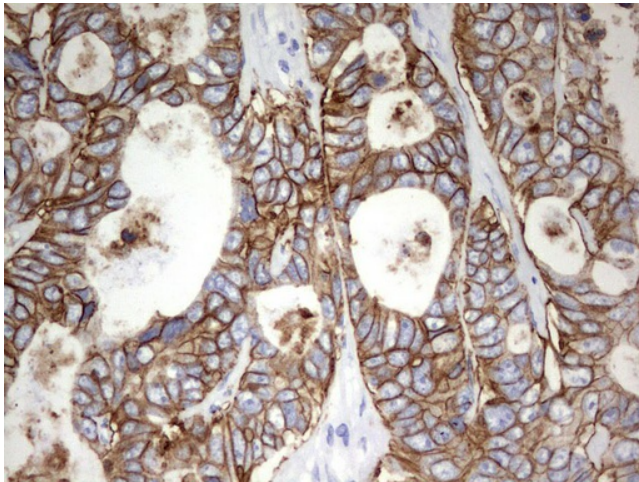
**Synonyms:** DIAR5; EGP-2; EGP40; EGP314; ESA; HNPCC8; KS1/4; KSA; M4S1; MIC18; MK-1; TACSTD1; TROP1

**Protein Families:** ES Cell Differentiation/IPS, Transmembrane

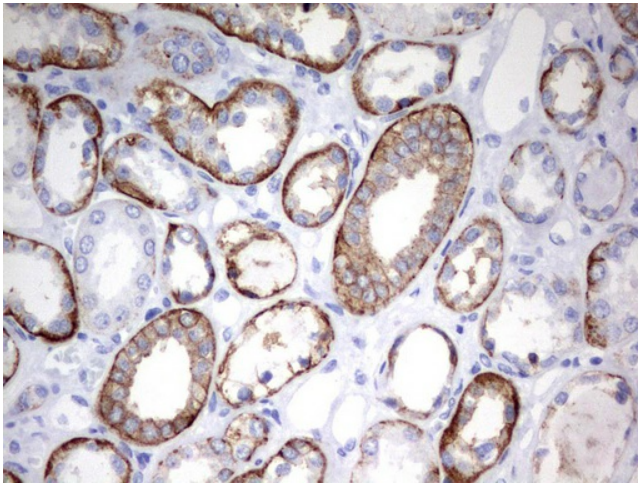
**Product images:**



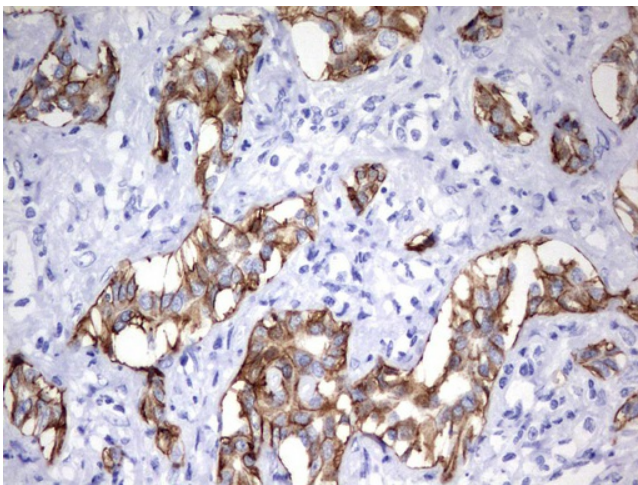
Immunohistochemical staining of paraffin-embedded Human colon tissue using anti-EPCAM mouse monoclonal antibody. (UM500097; heat-induced epitope retrieval by 10mM citric buffer, pH6.0, 120°C for 3min)



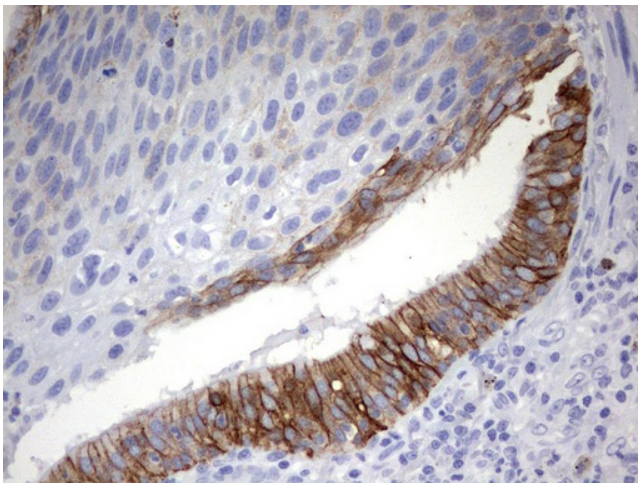
Immunohistochemical staining of paraffin-embedded Adenocarcinoma of Human colon tissue using anti-EPCAM mouse monoclonal antibody. (UM500097; heat-induced epitope retrieval by 10mM citric buffer, pH6.0, 120°C for 3min)



Immunohistochemical staining of paraffin-embedded Human Kidney tissue using anti-EPCAM mouse monoclonal antibody. (UM500097; heat-induced epitope retrieval by 10mM citric buffer, pH6.0, 120°C for 3min)

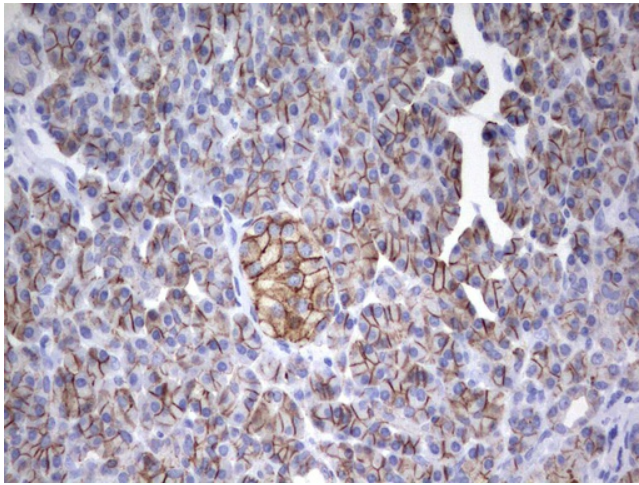


Immunohistochemical staining of paraffin-embedded Carcinoma of Human liver tissue using anti-EPCAM mouse monoclonal antibody. (UM500097; heat-induced epitope retrieval by 10mM citric buffer, pH6.0, 120°C for 3min)

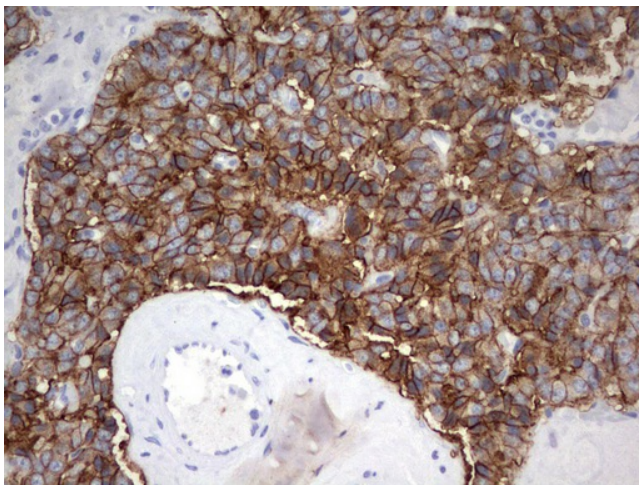


Immunohistochemical staining of paraffin-embedded Carcinoma of Human lung tissue using anti-EPCAM mouse monoclonal antibody. (UM500097; heat-induced epitope retrieval by 10mM citric buffer, pH6.0, 120°C for 3min)

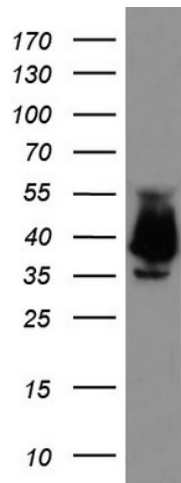




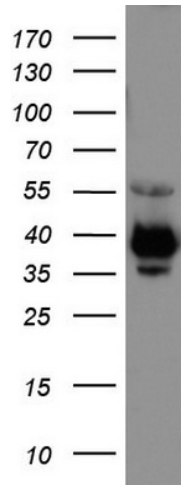
Immunohistochemical staining of paraffin-embedded Human pancreas tissue using anti-EPCAM mouse monoclonal antibody. (UM500097; heat-induced epitope retrieval by 10mM citric buffer, pH6.0, 120°C for 3min)



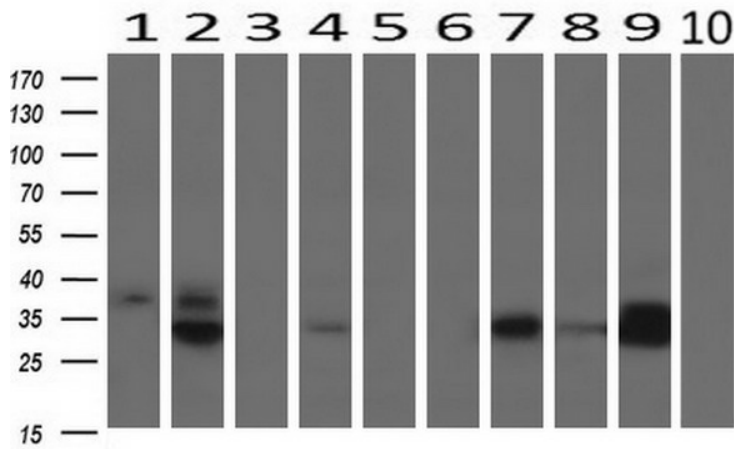
Immunohistochemical staining of paraffin-embedded Carcinoma of Human pancreas tissue using anti-EPCAMEPCAMmonoclonal antibody. (UM500097; heat-induced epitope retrieval by 10mM citric buffer, pH6.0, 120°C for 3min)



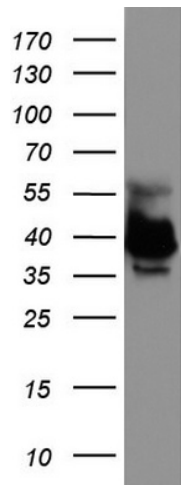
Western blot analysis of LOVO cell lysate (35ug) by using anti-EPCAM monoclonal antibody.



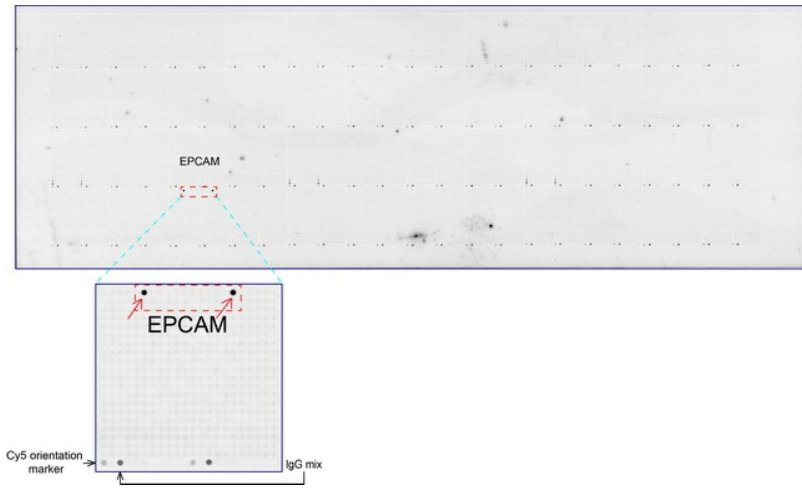
Western blot analysis of COLO205 cell lysate (35ug) by using anti-EPCAM monoclonal antibody.



Western blot analysis of extracts (10ug) from 10 Human tissue by using anti-EPCAM monoclonal antibody at 1:500 (1: Testis; 2: Omentum; 3: Uterus; 4: Breast; 5: Brain; 6: Liver; 7: Ovary; 8: Thyroid gland; 9: colon; 10: spleen).



Western blot analysis of HEK293 cell lysate (35ug) by using anti-EPCAM monoclonal antibody.



OriGene overexpression protein microarray chip was immunostained with UltraMAB anti-EPCAM mouse monoclonal antibody (UM500097). The positive reactive proteins are highlighted with two red arrows in the enlarged subarray. All the positive controls spotted in this subarray are also labeled for clarification.