

Product datasheet for **UM500096CF**

EPCAM Mouse Monoclonal Antibody [Clone ID: UMAB131]

Product data:

Product Type:	Primary Antibodies
Clone Name:	UMAB131
Applications:	FC, IHC, WB
Recommended Dilution:	WB 1:1000, IHC 1:200
Reactivity:	Human
Host:	Mouse
Isotype:	IgG1
Clonality:	Monoclonal
Immunogen:	Full length human recombinant protein of human EPCAM(NP_002345) produced in HEK293T cell.
Formulation:	Lyophilized powder (original buffer 1X PBS, pH 7.3, 8% trehalose)
Reconstitution Method:	For reconstitution, we recommend adding 100uL distilled water to a final antibody concentration of about 1 mg/mL. To use this carrier-free antibody for conjugation experiment, we strongly recommend performing another round of desalting process. (OriGene recommends Zeba Spin Desalting Columns, 7KMWCO from Thermo Scientific)
Purification:	Purified from mouse ascites fluids or tissue culture supernatant by affinity chromatography (protein A/G)
Conjugation:	Unconjugated
Storage:	Store at -20°C as received.
Stability:	Stable for 12 months from date of receipt.
Gene Name:	Homo sapiens epithelial cell adhesion molecule (EPCAM), mRNA.
Database Link:	NP_002345 Entrez Gene 4072 Human P16422



[View online »](#)

Background:

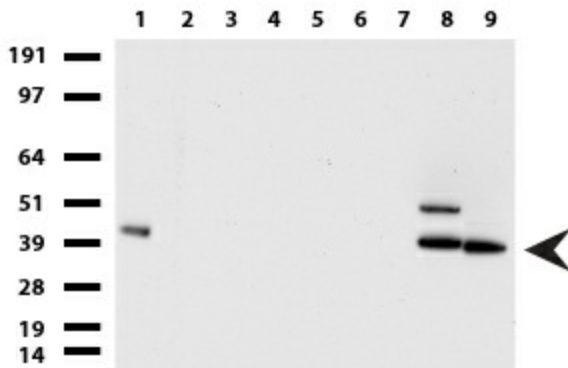
This gene encodes a carcinoma-associated antigen and is a member of a family that includes at least two type I membrane proteins. This antigen is expressed on most normal epithelial cells and gastrointestinal carcinomas and functions as a homotypic calcium-independent cell adhesion molecule. The antigen is being used as a target for immunotherapy treatment of human carcinomas. Mutations in this gene result in congenital tufting enteropathy. [provided by RefSeq, Dec 2008]

Synonyms:

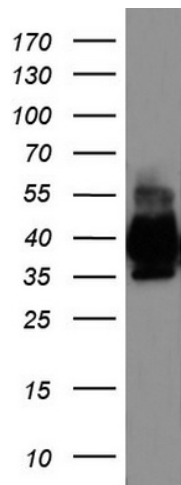
DIAR5; EGP-2; EGP40; EGP314; ESA; HNPCC8; KS1/4; KSA; M4S1; MIC18; MK-1; TACSTD1; TROP1

Protein Families:

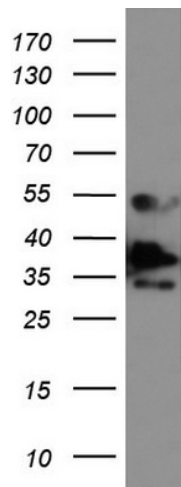
ES Cell Differentiation/IPS, Transmembrane

Product images:


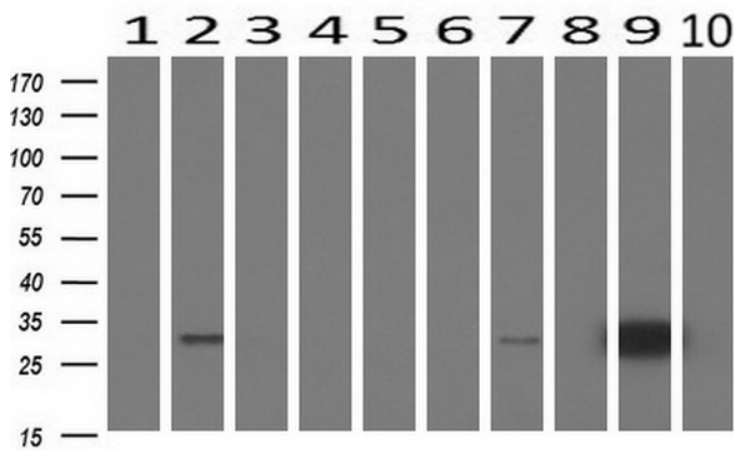
Western blot of cell lysates (35ug) from 9 different cell lines (1: HepG2, 2: HeLa, 3: SV-T2, 4: A549, 5: COS7, 6: Jurkat, 7: PC-12, 8: MDCK, 9: MCF7).



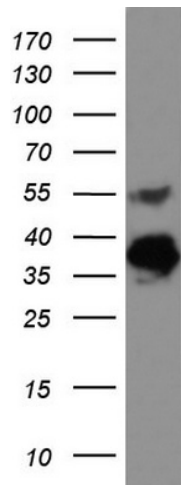
Western blot analysis of LOVO cell lysate (35ug) by using anti-EPCAM monoclonal antibody.



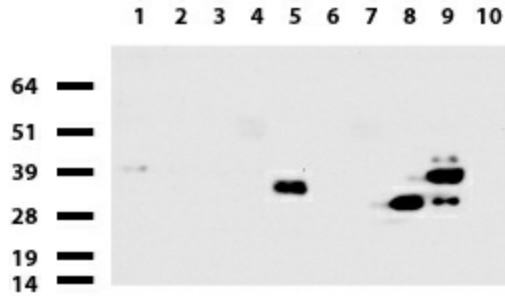
Western blot analysis of COLO205 cell lysate (35ug) by using anti-EPCAM monoclonal antibody.



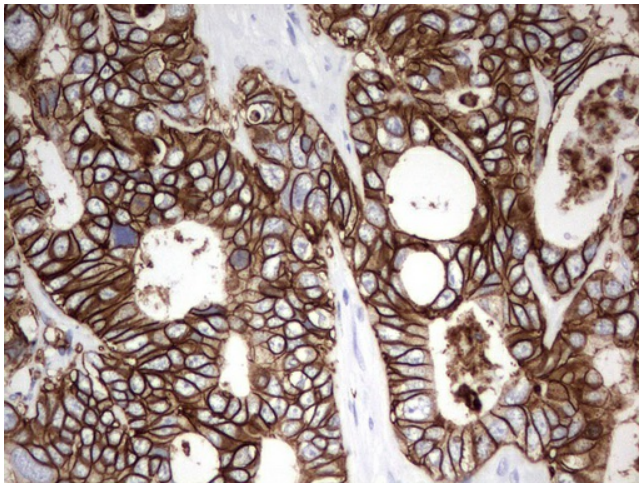
Western blot analysis of extracts (10ug) from 10 Human tissue by using anti-EPCAM monoclonal antibody at 1:500 (1: Testis; 2: Omentum; 3: Uterus; 4: Breast; 5: Brain; 6: Liver; 7: Ovary; 8: Thyroid gland; 9: colon; 10: spleen).



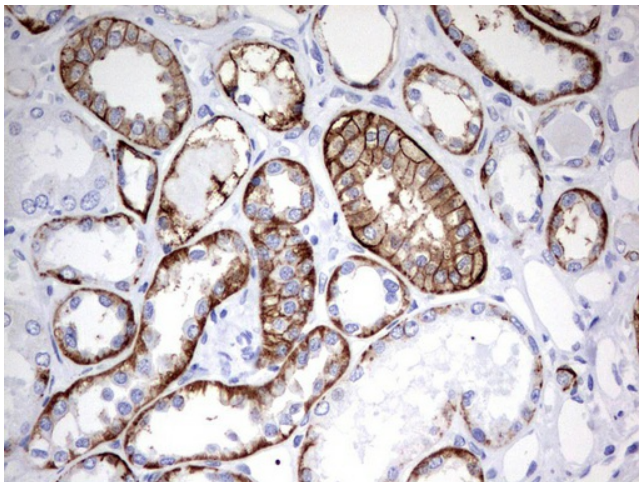
Western blot analysis of KM12 cell lysate (35ug) by using anti-EPCAM monoclonal antibody.



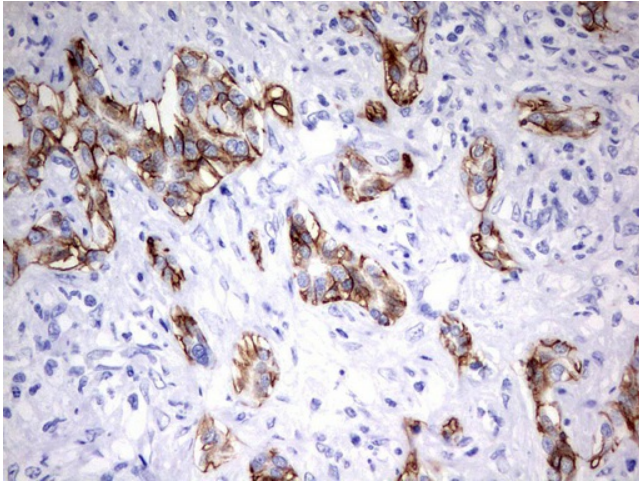
Western blot of human tissue lysates (15ug) from 10 different tissues (1: Testis, 2: Omentum, 3: Uterus, 4: Breast, 5: Brain, 6: Liver, 7: Ovary, 8: Thyroid, 9: Colon, 10: Spleen). Dilution: 1:500.



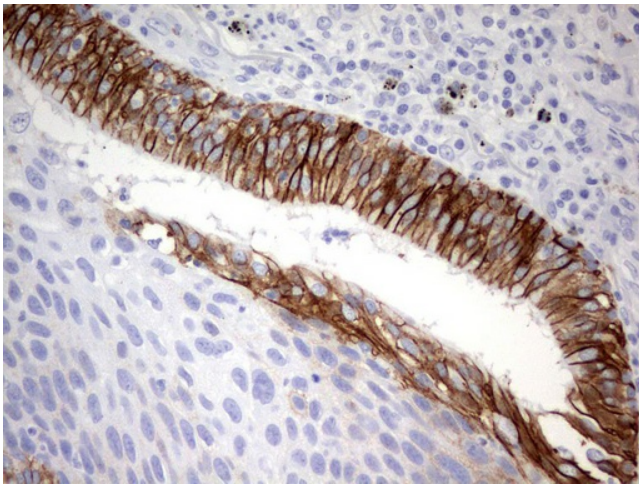
Immunohistochemical staining of paraffin-embedded Adenocarcinoma of Human colon tissue using anti-EPCAM mouse monoclonal antibody. ([UM500096]; heat-induced epitope retrieval by 10mM citric buffer, pH6.0, 120°C for 3min)



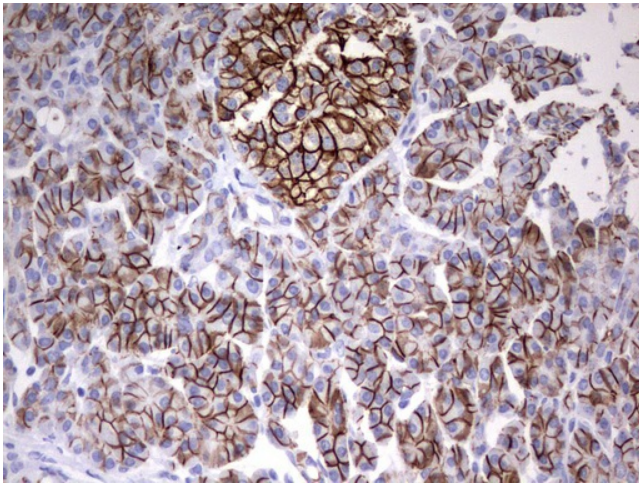
Immunohistochemical staining of paraffin-embedded Human Kidney tissue using anti-EPCAM mouse monoclonal antibody. ([UM500096]; heat-induced epitope retrieval by 10mM citric buffer, pH6.0, 120°C for 3min)



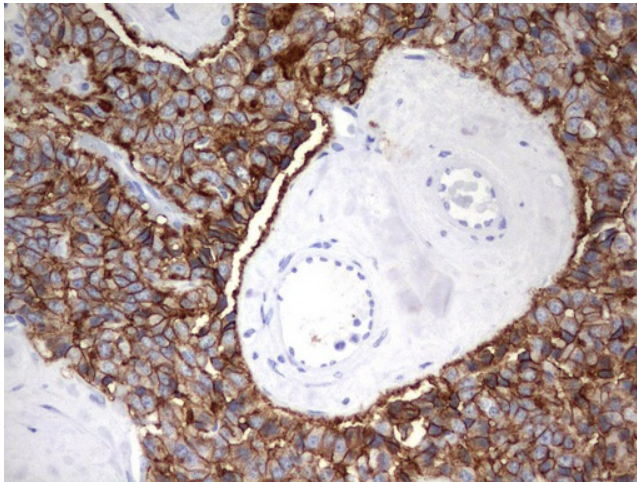
Immunohistochemical staining of paraffin-embedded Carcinoma of Human liver tissue using anti-EPCAM mouse monoclonal antibody. ([UM500096]; heat-induced epitope retrieval by 10mM citric buffer, pH6.0, 120°C for 3min)



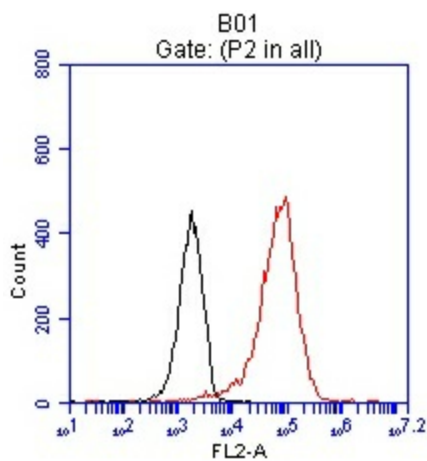
Immunohistochemical staining of paraffin-embedded Carcinoma of Human lung tissue using anti-EPCAM mouse monoclonal antibody. ([UM500096]; heat-induced epitope retrieval by 10mM citric buffer, pH6.0, 120°C for 3min)



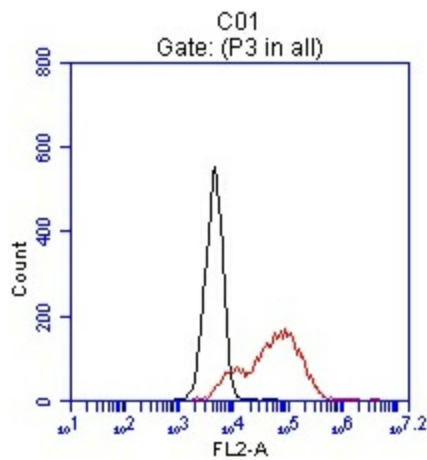
Immunohistochemical staining of paraffin-embedded Human pancreas tissue using anti-EPCAM mouse monoclonal antibody. ([UM500096]; heat-induced epitope retrieval by 10mM citric buffer, pH6.0, 120°C for 3min)



Immunohistochemical staining of paraffin-embedded Carcinoma of Human pancreas tissue using anti-EPCAM mouse monoclonal antibody. ([UM500096]; heat-induced epitope retrieval by 10mM citric buffer, pH6.0, 120°C for 3min)



Flow cytometric analysis of live HT29 cells, using anti-EPCAM antibody ([UM500096], clone UMAB131 at 1:100, Red), compared to IgG1 isotype control (Black).



Flow cytometric analysis of live OVCAR-4 cells, using anti-EPCAM antibody ([UM500096], clone UMAB131 at 1:100, Red), compared to IgG1 isotype control (Black).