

Product datasheet for **UM500092**

MSI1 Mouse Monoclonal Antibody [Clone ID: UMAB127]

Product data:

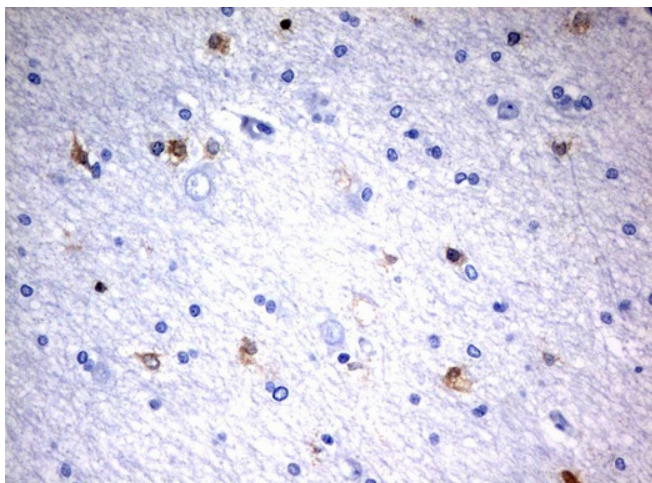
Product Type:	Primary Antibodies
Clone Name:	UMAB127
Applications:	10k-ChIP, IHC
Recommended Dilution:	IHC 1:100~200
Reactivity:	Human, Mouse, Rat
Host:	Mouse
Isotype:	IgG1
Clonality:	Monoclonal
Immunogen:	Full length human recombinant protein of human MSI1(NP_002433) produced in HEk293T cell.
Formulation:	PBS (pH 7.3) containing 1% BSA, 50% glycerol and 0.02% sodium azide.
Concentration:	0.5~1.0 mg/ml (Lot Dependent)
Purification:	Purified from mouse ascites fluids or tissue culture supernatant by affinity chromatography (protein A/G)
Conjugation:	Unconjugated
Storage:	Store at -20°C as received.
Stability:	Stable for 12 months from date of receipt.
Predicted Protein Size:	38.9 kDa
Gene Name:	musashi RNA binding protein 1
Database Link:	NP_002433 Entrez Gene 17690 Mouse Entrez Gene 259272 Rat Entrez Gene 4440 Human O43347
Background:	This gene encodes a protein containing two conserved tandem RNA recognition motifs. Similar proteins in other species function as RNA-binding proteins and play central roles in posttranscriptional gene regulation. Expression of this gene has been correlated with the grade of the malignancy and proliferative activity in gliomas and melanomas. A pseudogene for this gene is located on chromosome 11q13. [provided by RefSeq, Jul 2008]



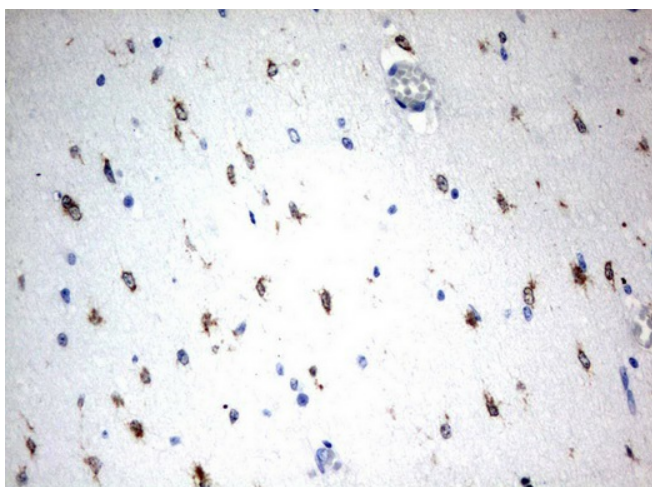
[View online »](#)

Synonyms: musashi 1; musashi homolog 1 (Drosophila)

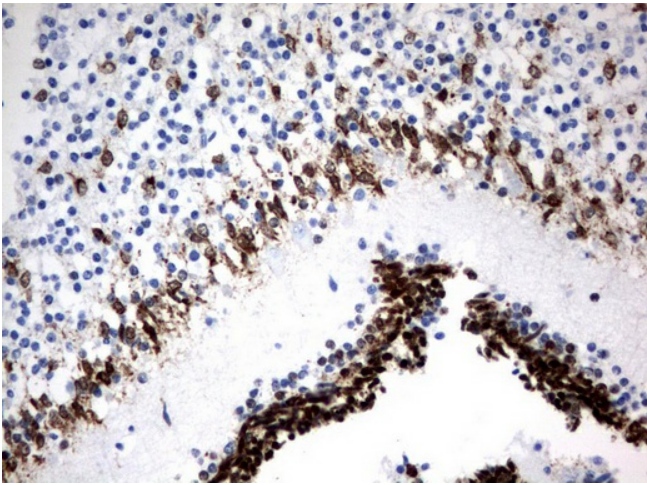
Product images:



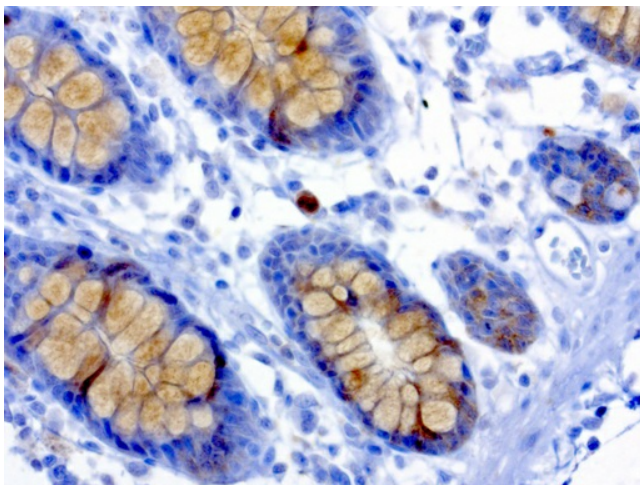
Immunohistochemical staining of paraffin-embedded Human adult brain tissue using anti-MSI1 mouse monoclonal antibody. (UM500092; heat-induced epitope retrieval by 10mM citric buffer, pH6.0, 120°C for 3min)



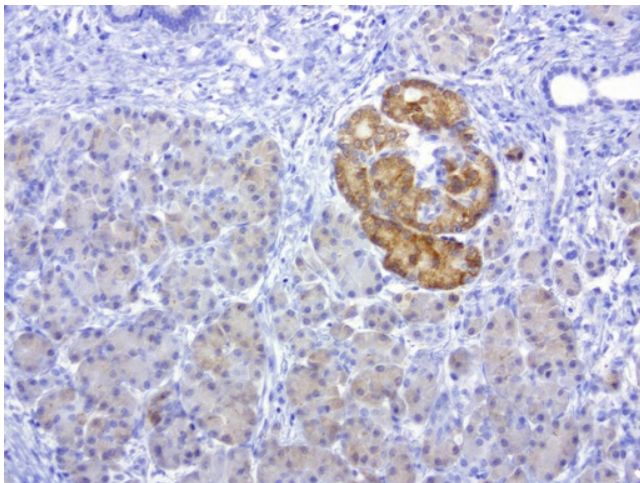
Immunohistochemical staining of paraffin-embedded Human embryonic brain cortex tissue using anti-MSI1 mouse monoclonal antibody. (UM500092; heat-induced epitope retrieval by 10mM citric buffer, pH6.0, 120°C for 3min)



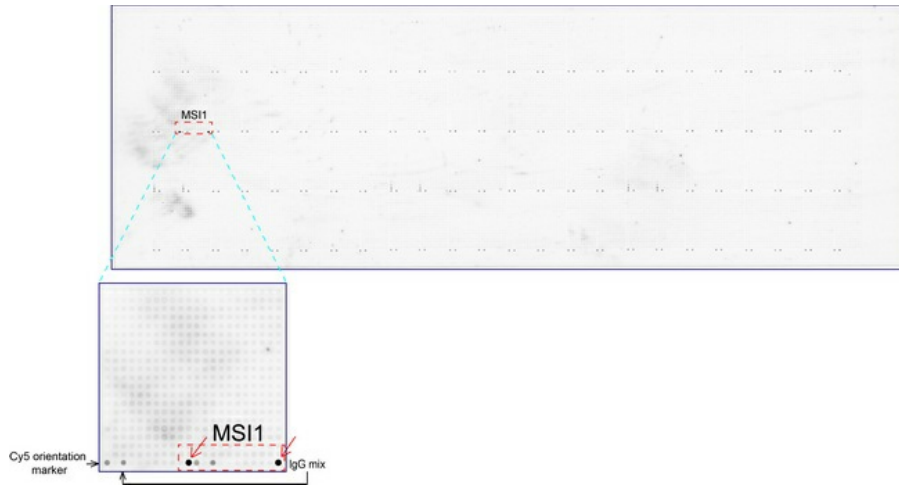
Immunohistochemical staining of paraffin-embedded Human embryonic cerebellum using anti-MS11 mouse monoclonal antibody. (UM500092; heat-induced epitope retrieval by 10mM citric buffer, pH6.0, 120°C for 3min)



Immunohistochemical staining of paraffin-embedded human colon using anti-MS11 clone UMAB127 mouse monoclonal antibody at 1:200 dilution 1mg/mL and detection with Polink2 Broad HRP DAB. UM500092 requires heat-induced epitope retrieval with Accel pH 8.7 in a pressure cooker for 3 minutes at 110C.



Immunohistochemical staining of paraffin-embedded human pancreas using anti-MS11 clone UMAB127 mouse monoclonal antibody at 1:200 dilution 1mg/mL and detection with Polink2 Broad HRP DAB. UM500092 requires heat-induced epitope retrieval with Accel pH 8.7 in a pressure cooker for 3 minutes at 110C. Cytoplasmic and membrane staining seen weakly on the glandular cells and strongly on the Islet of Langerhans



OriGene overexpression protein microarray chip was immunostained with UltraMAB anti-MSI1 mouse monoclonal antibody (UM500092). The positive reactive proteins are highlighted with two red arrows in the enlarged subarray. All the positive controls spotted in this subarray are also labeled for clarification.