

Product datasheet for **UM500090CF**

MRPS34 Mouse Monoclonal Antibody [Clone ID: UMAB125]

Product data:

Product Type:	Primary Antibodies
Clone Name:	UMAB125
Applications:	10k-ChIP, IF, IHC, WB
Recommended Dilution:	IHC 1:100~200
Reactivity:	Human, Mouse, Rat
Host:	Mouse
Isotype:	IgG1
Clonality:	Monoclonal
Immunogen:	Full length human recombinant protein of human MRPS34(NP_076425) produced in E.coli.
Formulation:	Lyophilized powder (original buffer 1X PBS, pH 7.3, 8% trehalose)
Reconstitution Method:	For reconstitution, we recommend adding 100uL distilled water to a final antibody concentration of about 1 mg/mL. To use this carrier-free antibody for conjugation experiment, we strongly recommend performing another round of desalting process. (OriGene recommends Zeba Spin Desalting Columns, 7KMWCO from Thermo Scientific)
Purification:	Purified from mouse ascites fluids or tissue culture supernatant by affinity chromatography (protein A/G)
Conjugation:	Unconjugated
Storage:	Store at -20°C as received.
Stability:	Stable for 12 months from date of receipt.
Predicted Protein Size:	25.5 kDa
Gene Name:	mitochondrial ribosomal protein S34
Database Link:	NP_076425 Entrez Gene 79044 Mouse Entrez Gene 65993 Human P82930



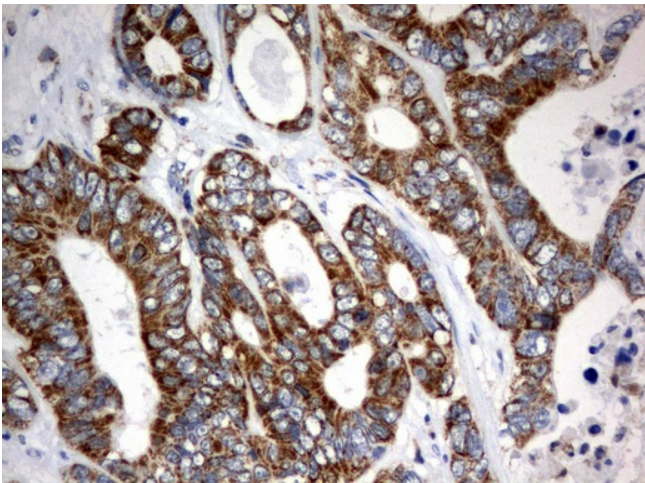
[View online »](#)

Background:

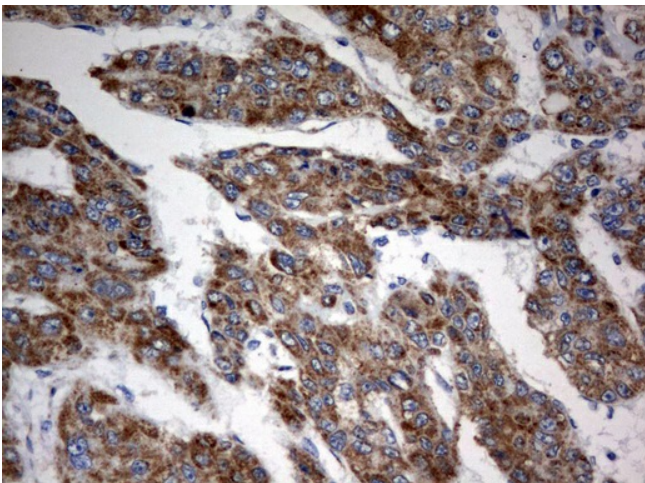
Mammalian mitochondrial ribosomal proteins are encoded by nuclear genes and help in protein synthesis within the mitochondrion. Mitochondrial ribosomes (mitoribosomes) consist of a small 28S subunit and a large 39S subunit. They have an estimated 75% protein to rRNA composition compared to prokaryotic ribosomes, where this ratio is reversed. Another difference between mammalian mitoribosomes and prokaryotic ribosomes is that the latter contain a 5S rRNA. Among different species, the proteins comprising the mitoribosome differ greatly in sequence, and sometimes in biochemical properties, which prevents easy recognition by sequence homology. This gene encodes a 28S subunit protein. Alternate splice variants of this gene have been described but their full-length nature has not been determined. [provided by RefSeq, Jul 2008]

Synonyms:

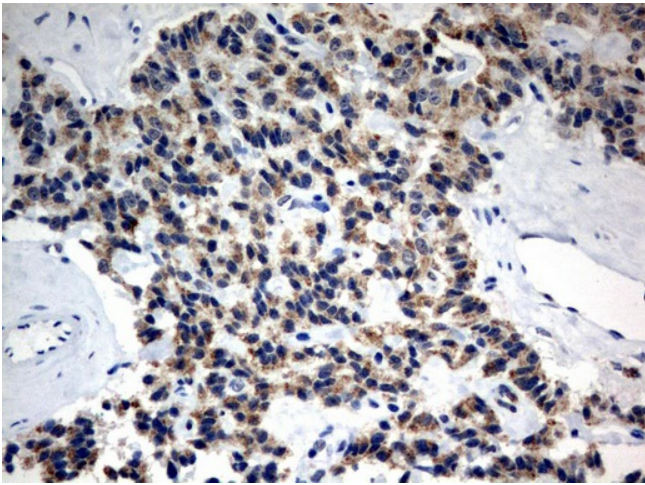
MRP-S12; MRP-S34; MRPS12

Product images:


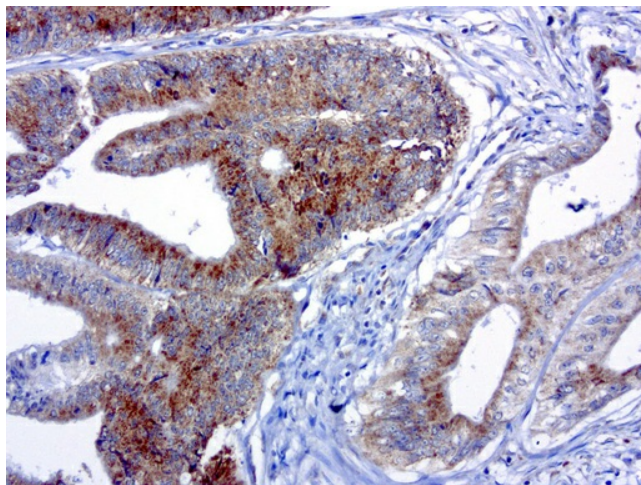
Immunohistochemical staining of paraffin-embedded Adenocarcinoma of Human colon tissue using anti-MRPS34 mouse monoclonal antibody. ([UM500090]; heat-induced epitope retrieval by 10mM citric buffer, pH6.0, 120°C for 3min)



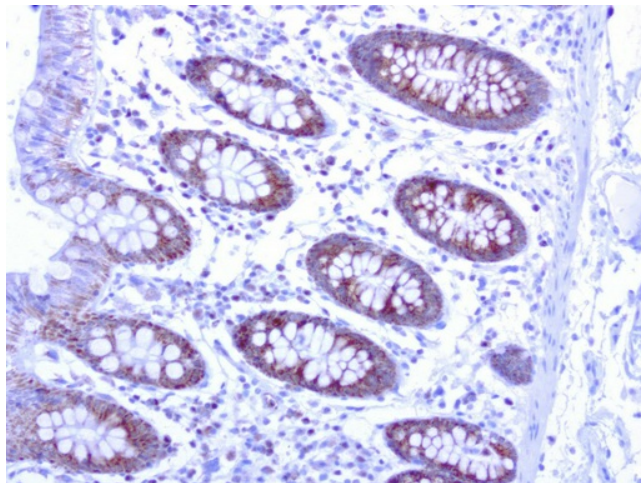
Immunohistochemical staining of paraffin-embedded Carcinoma of Human liver tissue using anti-MRPS34 mouse monoclonal antibody. ([UM500090]; heat-induced epitope retrieval by 10mM citric buffer, pH6.0, 120°C for 3min)



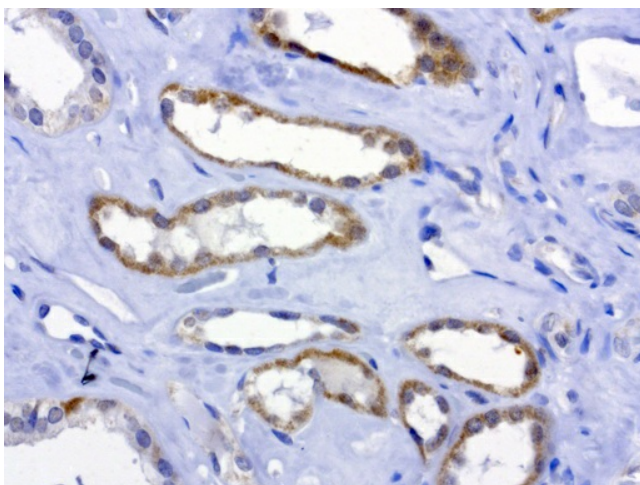
Immunohistochemical staining of paraffin-embedded Carcinoma of Human pancreas tissue using anti-MRPS34 mouse monoclonal antibody. [UM500090]; heat-induced epitope retrieval by 10mM citric buffer, pH6.0, 120°C for 3min)



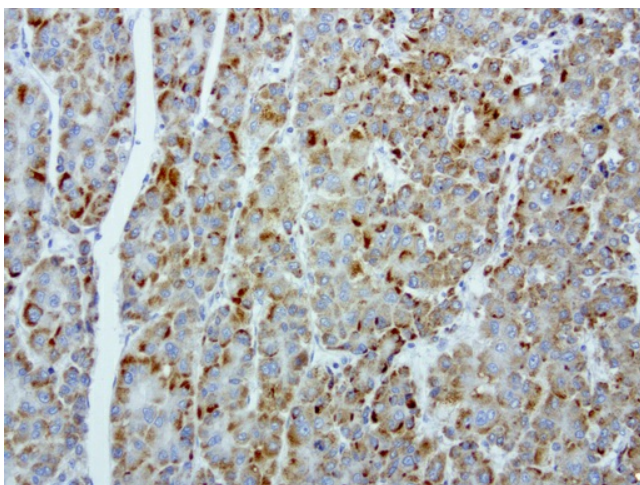
Immunohistochemical staining of paraffin-embedded human colon cancer using anti-MRPS34 clone UMAB125 mouse monoclonal antibody at 1:200 dilution 1mg/mL and detection with Polink2 Broad HRP DAB. [UM500090] requires heat-induced epitope retrieval with citrate pH6.0 in a pressure cooker for 3 minutes at 110C. The image shows membranous and cytoplasmic staining in the tumor cells.



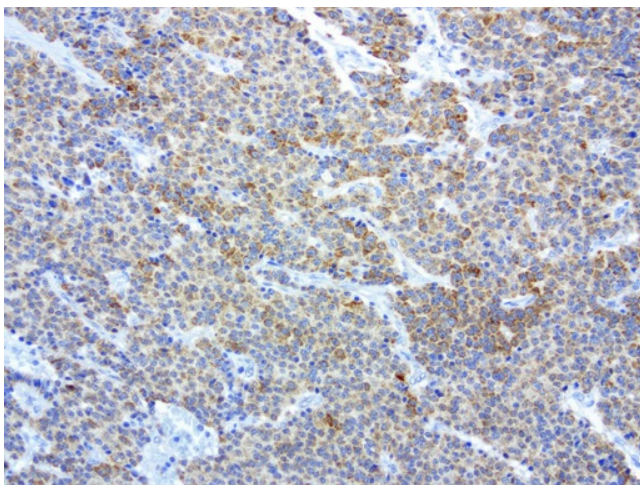
Immunohistochemical staining of paraffin-embedded human colon normal adjacent using anti-MRPS34 clone UMAB125 mouse monoclonal antibody at 1:200 dilution 1mg/mL and detection with Polink2 Broad HRP DAB. [UM500090] requires heat-induced epitope retrieval with citrate pH6.0 in a pressure cooker for 3 minutes at 110C. The image shows membranous and cytoplasmic staining in the normal epithelial cells.



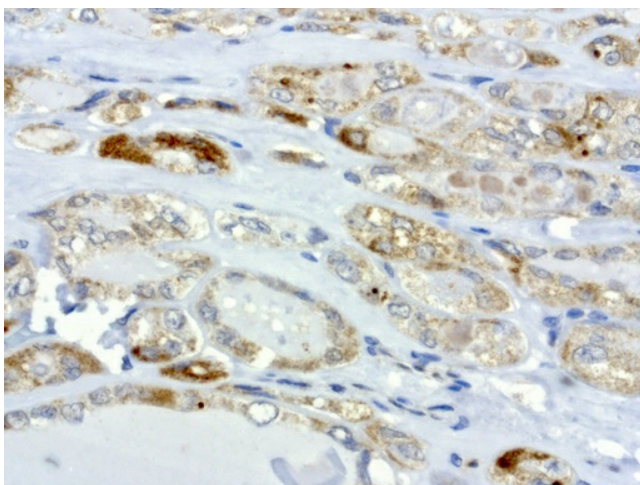
Immunohistochemical staining of paraffin-embedded human kidney normal adjacent using anti-MRPS34 clone UMAB125 mouse monoclonal antibody at 1:200 dilution 1mg/mL and detection with Polink2 Broad HRP DAB. [UM500090] requires heat-induced epitope retrieval with citrate pH6.0 in a pressure cooker for 3 minutes at 110C. The image shows membranous and cytoplasmic staining in the normal kidney epithelia cells.



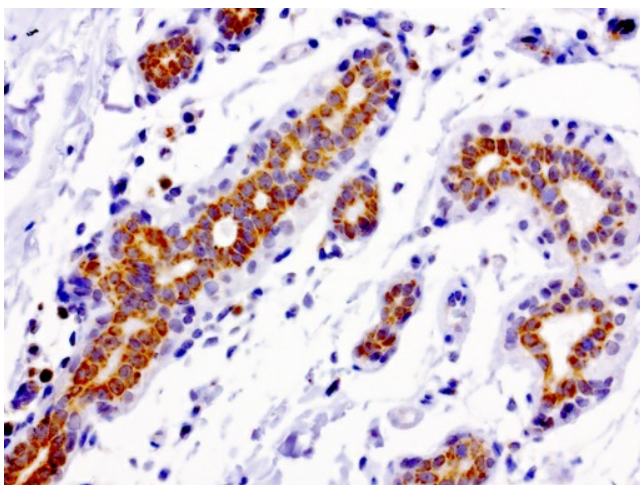
Immunohistochemical staining of paraffin-embedded human liver normal adjacent using anti-MRPS34 clone UMAB125 mouse monoclonal antibody at 1:200 dilution 1mg/mL and detection with Polink2 Broad HRP DAB. [UM500090] requires heat-induced epitope retrieval with citrate pH6.0 in a pressure cooker for 3 minutes at 110C. The image shows membranous and punctate cytoplasmic staining in hepatocyte cells



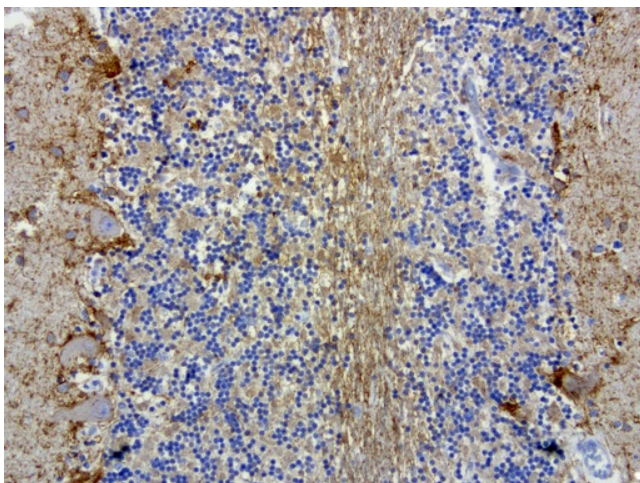
Immunohistochemical staining of paraffin-embedded human lung cancer using anti-MRPS34 clone UMAB125 mouse monoclonal antibody at 1:200 dilution 1mg/mL and detection with Polink2 Broad HRP DAB. [UM500090] requires heat-induced epitope retrieval with citrate pH6.0 in a pressure cooker for 3 minutes at 110C. The image shows membranous and cytoplasmic staining in tumor cells.



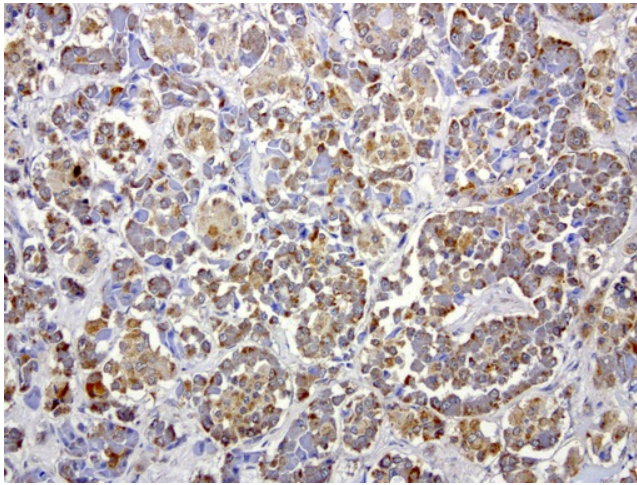
Immunohistochemical staining of paraffin-embedded human thyroid cancer using anti-MRPS34 clone UMAB125 mouse monoclonal antibody at 1:200 dilution 1mg/mL and detection with Polink2 Broad HRP DAB. [UM500090] requires heat-induced epitope retrieval with citrate pH6.0 in a pressure cooker for 3 minutes at 110C. The image shows membranous and cytoplasmic staining in tumor cells.



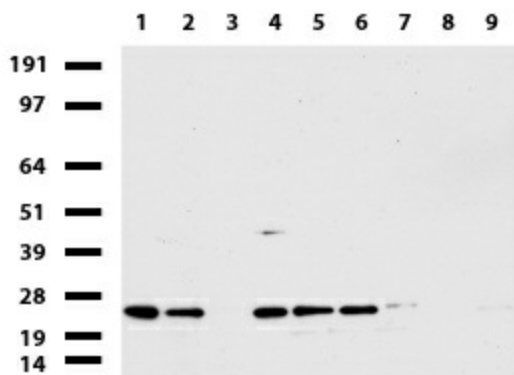
Immunohistochemical staining of paraffin-embedded human breast normal adjacent using anti-MRPS34 clone UMAB125 mouse monoclonal antibody at 1:200 dilution 1mg/mL and detection with Polink2 Broad HRP DAB. [UM500090] requires heat-induced epitope retrieval with citrate pH6.0 in a pressure cooker for 3 minutes at 110C. The image shows membranous and cytoplasmic staining in breast epithelia cells.



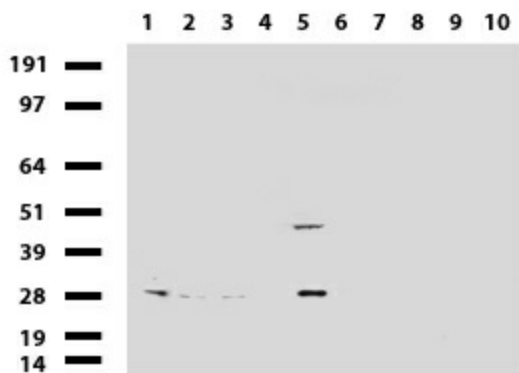
Immunohistochemical staining of paraffin-embedded human brain using anti-MRPS34 clone UMAB125 mouse monoclonal antibody at 1:200 dilution 1mg/mL and detection with Polink2 Broad HRP DAB. [UM500090] requires heat-induced epitope retrieval with citrate pH6.0 in a pressure cooker for 3 minutes at 110C. The image shows membranous and cytoplasmic staining in.



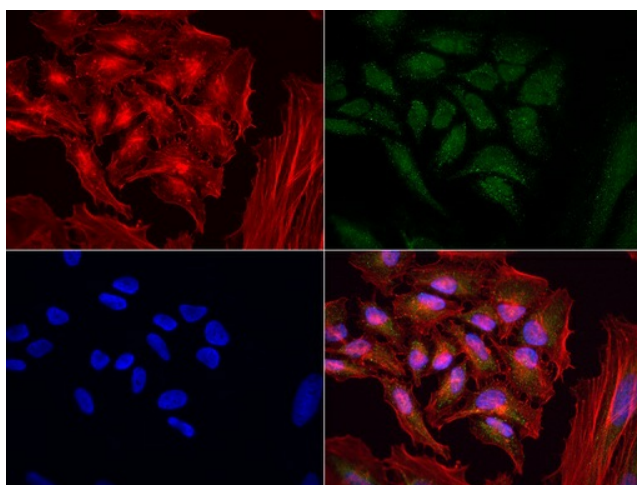
Immunohistochemical staining of paraffin-embedded human pituitary using anti-MRPS34 clone UMAB125 mouse monoclonal antibody at 1:200 dilution 1mg/mL and detection with Polink2 Broad HRP DAB. [UM500090] requires heat-induced epitope retrieval with citrate pH6.0 in a pressure cooker for 3 minutes at 110C. The image shows membranous and cytoplasmic staining in breast epithelia cells.



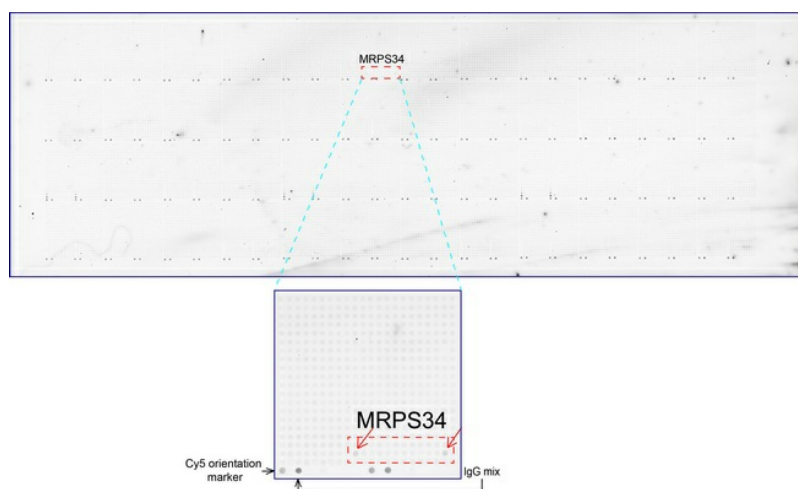
Western blot of cell lysates (35ug) from 9 different cell lines (1: HepG2, 2: HeLa, 3: SV-T2, 4: A549, 5: COS7, 6: Jurkat, 7: MDCK, 8: PC-12, 9: MCF7).



Western blot of human tissue lysates (15ug) from 10 different tissues (1: Testis, 2: Omentum, 3: Uterus, 4: Breast, 5: Brain, 6: Liver, 7: Ovary, 8: Thyroid, 9: Colon, 10: Spleen). Dilution: 1:500.



Immunofluorescent staining of HeLa cells using anti-MRPS34 mouse monoclonal antibody ([UM500090], green, 1:100). Actin filaments were labeled with Alexa Fluor® 594 Phalloidin (red), and nuclear with DAPI (blue).



OriGene overexpression protein microarray chip was immunostained with UltraMAB anti-MRPS34 mouse monoclonal antibody ([UM500090]). The positive reactive proteins are highlighted with two red arrows in the enlarged subarray. All the positive controls spotted in this subarray are also labeled for clarification.