

## Product datasheet for **UM500090**

### MRPS34 Mouse Monoclonal Antibody [Clone ID: UMAB125]

#### Product data:

Product Type:	Primary Antibodies
Clone Name:	UMAB125
Applications:	10k-ChIP, IF, IHC, WB
Recommended Dilution:	IHC 1:100~200
Reactivity:	Human, Mouse, Rat
Host:	Mouse
Isotype:	IgG1
Clonality:	Monoclonal
Immunogen:	Full length human recombinant protein of human MRPS34(NP_076425) produced in E.coli.
Formulation:	PBS (pH 7.3) containing 1% BSA, 50% glycerol and 0.02% sodium azide.
Concentration:	0.5~1.0 mg/ml (Lot Dependent)
Purification:	Purified from mouse ascites fluids or tissue culture supernatant by affinity chromatography (protein A/G)
Conjugation:	Unconjugated
Storage:	Store at -20°C as received.
Stability:	Stable for 12 months from date of receipt.
Predicted Protein Size:	25.5 kDa
Gene Name:	mitochondrial ribosomal protein S34
Database Link:	<a href="#">NP_076425</a> <a href="#">Entrez Gene 79044 Mouse</a> <a href="#">Entrez Gene 65993 Human</a> <a href="#">P82930</a>



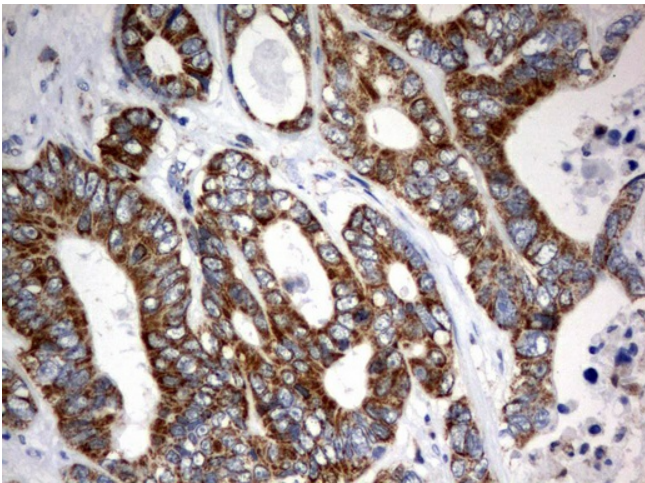
[View online »](#)

**Background:**

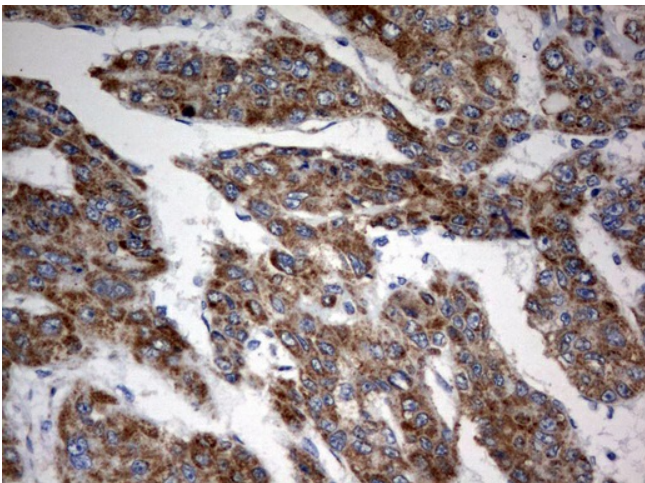
Mammalian mitochondrial ribosomal proteins are encoded by nuclear genes and help in protein synthesis within the mitochondrion. Mitochondrial ribosomes (mitoribosomes) consist of a small 28S subunit and a large 39S subunit. They have an estimated 75% protein to rRNA composition compared to prokaryotic ribosomes, where this ratio is reversed. Another difference between mammalian mitoribosomes and prokaryotic ribosomes is that the latter contain a 5S rRNA. Among different species, the proteins comprising the mitoribosome differ greatly in sequence, and sometimes in biochemical properties, which prevents easy recognition by sequence homology. This gene encodes a 28S subunit protein. Alternate splice variants of this gene have been described but their full-length nature has not been determined. [provided by RefSeq, Jul 2008]

**Synonyms:**

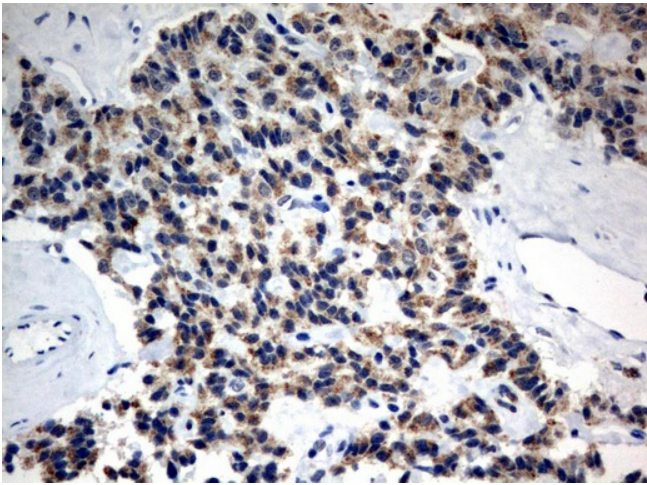
MRP-S12; MRP-S34; MRPS12

**Product images:**

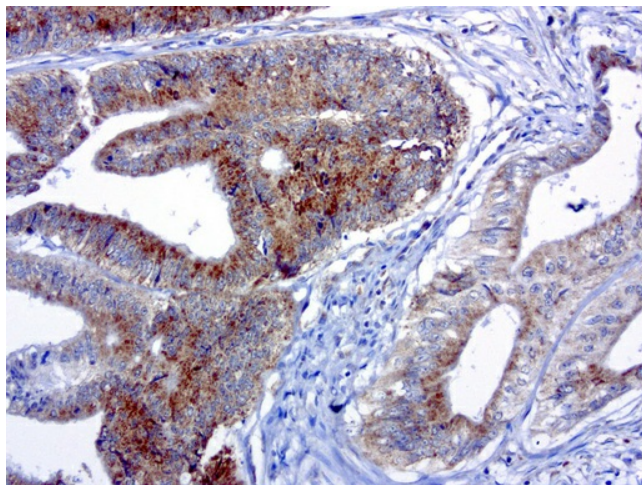
Immunohistochemical staining of paraffin-embedded Adenocarcinoma of Human colon tissue using anti-MRPS34 mouse monoclonal antibody. (UM500090; heat-induced epitope retrieval by 10mM citric buffer, pH6.0, 120°C for 3min)



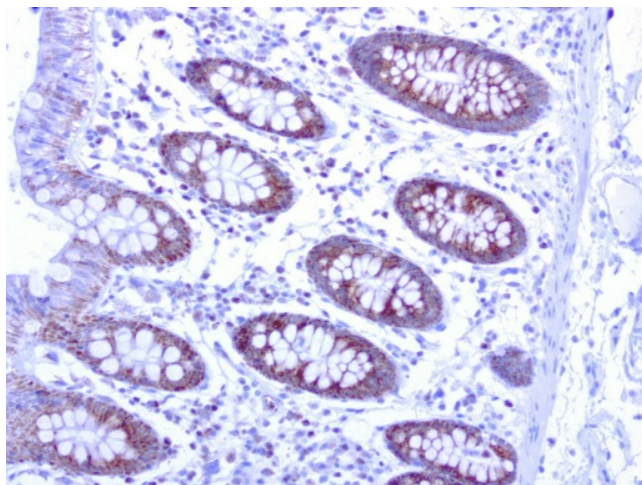
Immunohistochemical staining of paraffin-embedded Carcinoma of Human liver tissue using anti-MRPS34 mouse monoclonal antibody. (UM500090; heat-induced epitope retrieval by 10mM citric buffer, pH6.0, 120°C for 3min)



Immunohistochemical staining of paraffin-embedded Carcinoma of Human pancreas tissue using anti-MRPS34 mouse monoclonal antibody. (UM500090; heat-induced epitope retrieval by 10mM citric buffer, pH6.0, 120°C for 3min)

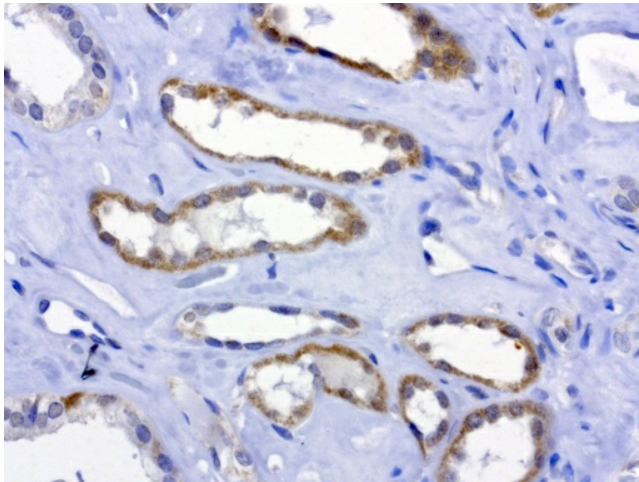


Immunohistochemical staining of paraffin-embedded human colon cancer using anti-MRPS34 clone UMAB125 mouse monoclonal antibody at 1:200 dilution 1mg/mL and detection with Polink2 Broad HRP DAB. UM500090 requires heat-induced epitope retrieval with citrate pH6.0 in a pressure cooker for 3 minutes at 110C. The image shows membranous and cytoplasmic staining in the tumor cells.

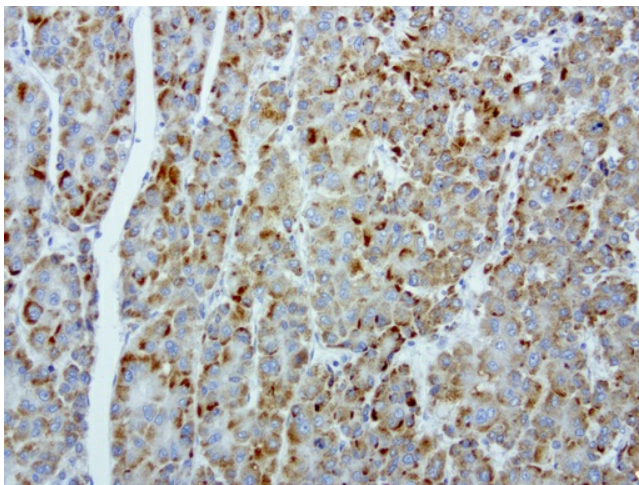


Immunohistochemical staining of paraffin-embedded human colon normal adjacent using anti-MRPS34 clone UMAB125 mouse monoclonal antibody at 1:200 dilution 1mg/mL and detection with Polink2 Broad HRP DAB. UM500090 requires heat-induced epitope retrieval with citrate pH6.0 in a pressure cooker for 3 minutes at 110C. The image shows membranous and cytoplasmic staining in the normal epithelia cells.

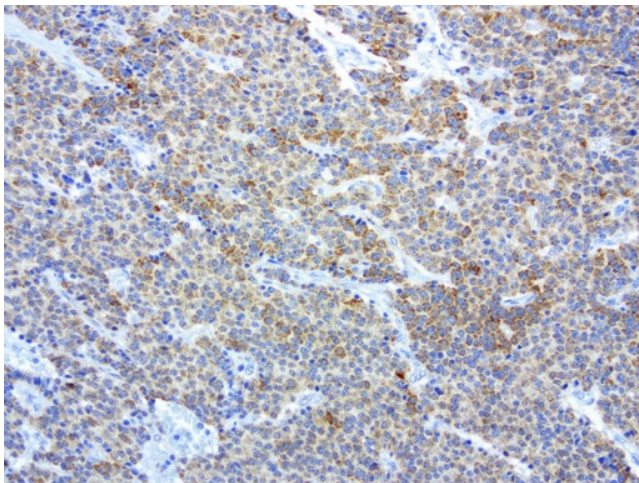




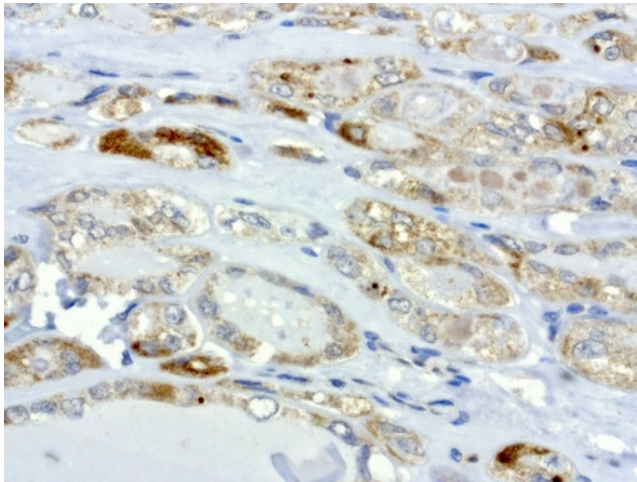
Immunohistochemical staining of paraffin-embedded human kidney normal adjacent using anti-MRPS34 clone UMAB125 mouse monoclonal antibody at 1:200 dilution 1mg/mL and detection with Polink2 Broad HRP DAB. UM500090 requires heat-induced epitope retrieval with citrate pH6.0 in a pressure cooker for 3 minutes at 110C. The image shows membranous and cytoplasmic staining in the normal kidney epithelia cells.



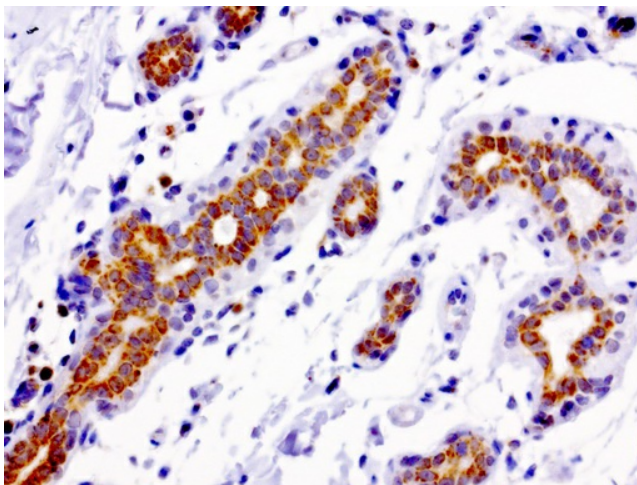
Immunohistochemical staining of paraffin-embedded human liver normal adjacent using anti-MRPS34 clone UMAB125 mouse monoclonal antibody at 1:200 dilution 1mg/mL and detection with Polink2 Broad HRP DAB. UM500090 requires heat-induced epitope retrieval with citrate pH6.0 in a pressure cooker for 3 minutes at 110C. The image shows membranous and punctate cytoplasmic staining in hepatocyte cells



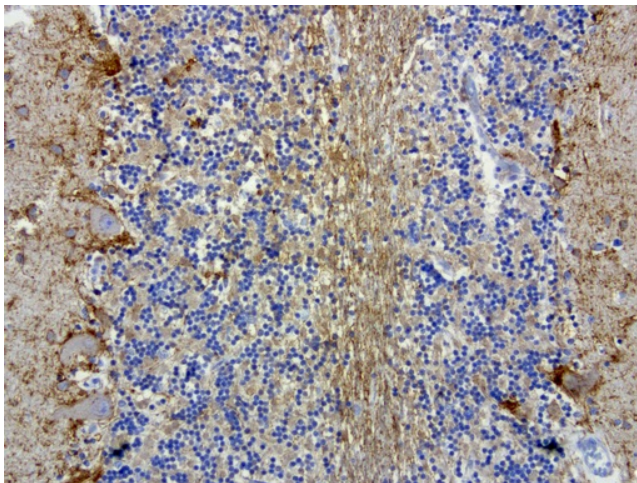
Immunohistochemical staining of paraffin-embedded human lung cancer using anti-MRPS34 clone UMAB125 mouse monoclonal antibody at 1:200 dilution 1mg/mL and detection with Polink2 Broad HRP DAB. UM500090 requires heat-induced epitope retrieval with citrate pH6.0 in a pressure cooker for 3 minutes at 110C. The image shows membranous and cytoplasmic staining in tumor cells.



Immunohistochemical staining of paraffin-embedded human thyroid cancer using anti-MRPS34 clone UMAB125 mouse monoclonal antibody at 1:200 dilution 1mg/mL and detection with Polink2 Broad HRP DAB. UM500090 requires heat-induced epitope retrieval with citrate pH6.0 in a pressure cooker for 3 minutes at 110C. The image shows membranous and cytoplasmic staining in tumor cells.

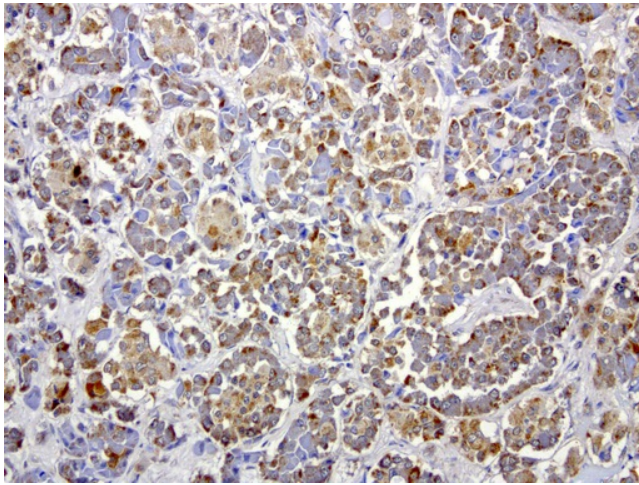


Immunohistochemical staining of paraffin-embedded human breast normal adjacent using anti-MRPS34 clone UMAB125 mouse monoclonal antibody at 1:200 dilution 1mg/mL and detection with Polink2 Broad HRP DAB. UM500090 requires heat-induced epitope retrieval with citrate pH6.0 in a pressure cooker for 3 minutes at 110C. The image shows membranous and cytoplasmic staining in breast epithelia cells.

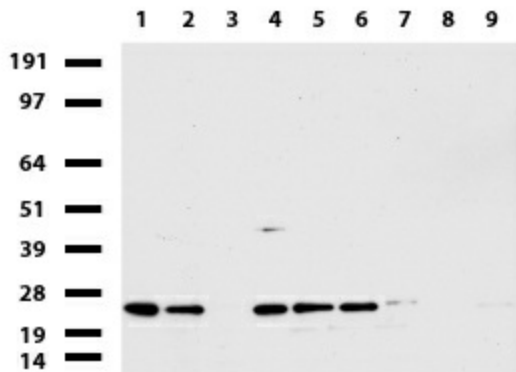


Immunohistochemical staining of paraffin-embedded human brain using anti-MRPS34 clone UMAB125 mouse monoclonal antibody at 1:200 dilution 1mg/mL and detection with Polink2 Broad HRP DAB. UM500090 requires heat-induced epitope retrieval with citrate pH6.0 in a pressure cooker for 3 minutes at 110C. The image shows membranous and cytoplasmic staining in.

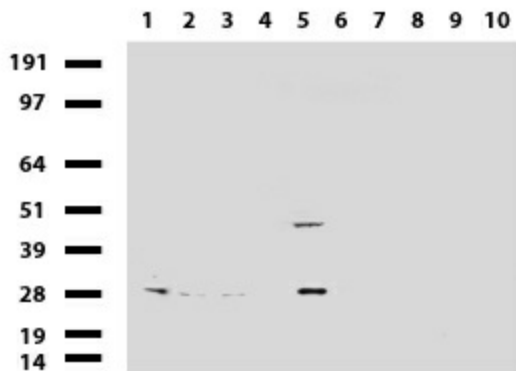




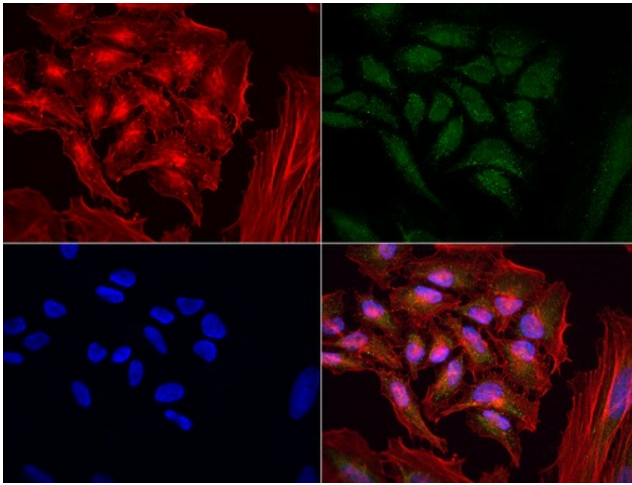
Immunohistochemical staining of paraffin-embedded human pituitary using anti-MRPS34 clone UMAB125 mouse monoclonal antibody at 1:200 dilution 1mg/mL and detection with Polink2 Broad HRP DAB. UM500090 requires heat-induced epitope retrieval with citrate pH6.0 in a pressure cooker for 3 minutes at 110C. The image shows membranous and cytoplasmic staining in breast epithelia cells.



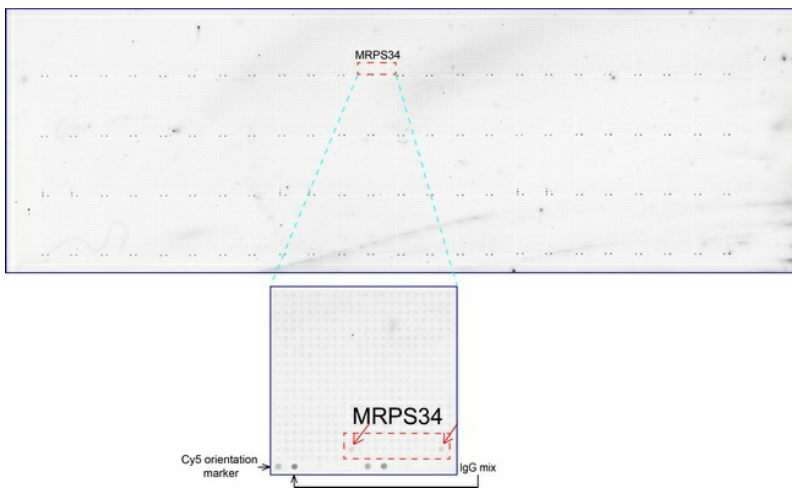
Western blot of cell lysates (35ug) from 9 different cell lines (1: HepG2, 2: HeLa, 3: SV-T2, 4: A549, 5: COS7, 6: Jurkat, 7: MDCK, 8: PC-12, 9: MCF7).



Western blot of human tissue lysates (15ug) from 10 different tissues (1: Testis, 2: Omentum, 3: Uterus, 4: Breast, 5: Brain, 6: Liver, 7: Ovary, 8: Thyroid, 9: Colon, 10: Spleen). Dilution: 1:500.



Immunofluorescent staining of HeLa cells using anti-MRPS34 mouse monoclonal antibody (UM500090, green, 1:100). Actin filaments were labeled with Alexa Fluor® 594 Phalloidin (red), and nuclear with DAPI (blue).



OriGene overexpression protein microarray chip was immunostained with UltraMAB anti-MRPS34 mouse monoclonal antibody (UM500090). The positive reactive proteins are highlighted with two red arrows in the enlarged subarray. All the positive controls spotted in this subarray are also labeled for clarification.