

## Product datasheet for **UM500086**

### CA12 Mouse Monoclonal Antibody [Clone ID: UMAB121]

#### Product data:

Product Type:	Primary Antibodies
Clone Name:	UMAB121
Applications:	IF, IHC, WB
Recommended Dilution:	IHC 1:100~200
Reactivity:	Human
Host:	Mouse
Isotype:	IgG2a
Clonality:	Monoclonal
Immunogen:	Full length human recombinant protein of human CA12(NP_001209) produced in HEK293T cell.
Formulation:	PBS (pH 7.3) containing 1% BSA, 50% glycerol and 0.02% sodium azide.
Concentration:	0.5~1.0 mg/ml (Lot Dependent)
Purification:	Purified from mouse ascites fluids or tissue culture supernatant by affinity chromatography (protein A/G)
Conjugation:	Unconjugated
Storage:	Store at -20°C as received.
Stability:	Stable for 12 months from date of receipt.
Predicted Protein Size:	36.8 kDa
Gene Name:	carbonic anhydrase 12
Database Link:	<a href="#">NP_001209</a> <a href="#">Entrez Gene 771 Human</a> <a href="#">O43570</a>



[View online »](#)

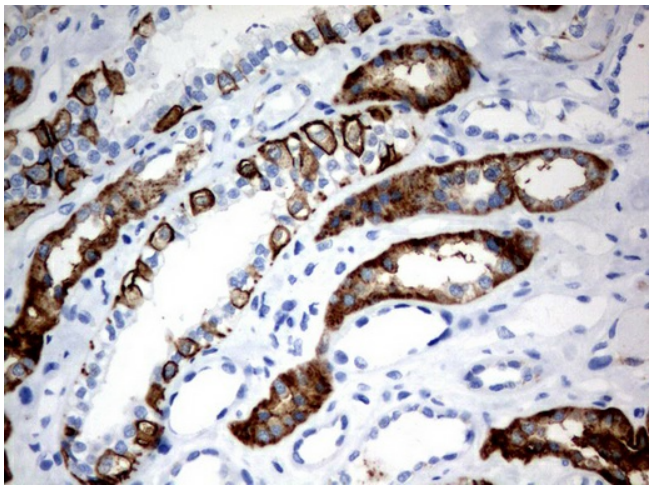
**Background:** Carbonic anhydrases (CAs) are a large family of zinc metalloenzymes that catalyze the reversible hydration of carbon dioxide. They participate in a variety of biological processes, including respiration, calcification, acid-base balance, bone resorption, and the formation of aqueous humor, cerebrospinal fluid, saliva, and gastric acid. This gene product is a type I membrane protein that is highly expressed in normal tissues, such as kidney, colon and pancreas, and has been found to be overexpressed in 10% of clear cell renal carcinomas. Two transcript variants encoding different isoforms have been identified for this gene. [provided by RefSeq, Jul 2008]

**Synonyms:** CAXII; HsT18816

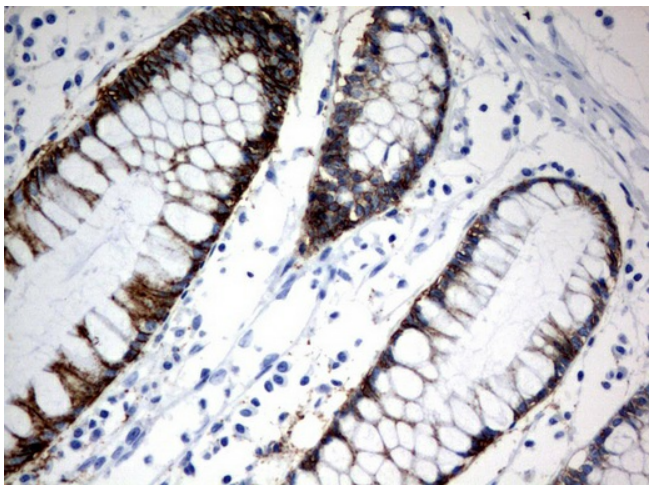
**Protein Families:** Druggable Genome, Transmembrane

**Protein Pathways:** Nitrogen metabolism

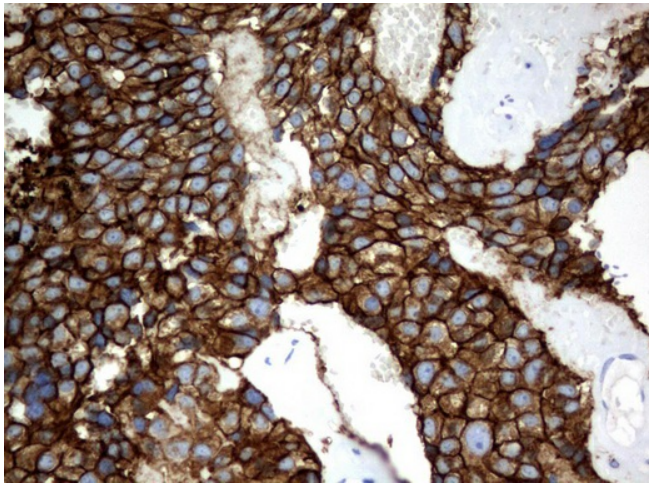
### Product images:



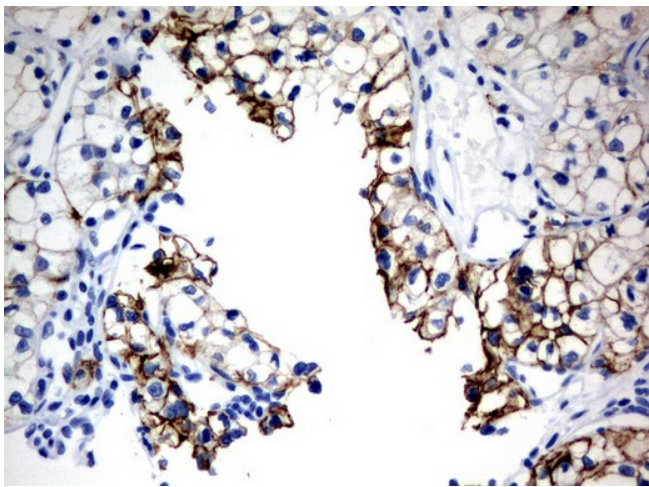
Immunohistochemical staining of paraffin-embedded Human Kidney tissue using anti-CA12 mouse monoclonal antibody. (UM500086; heat-induced epitope retrieval by 10mM citric buffer, pH6.0, 120°C for 3min)



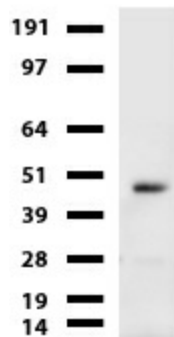
Immunohistochemical staining of paraffin-embedded Human colon tissue using anti-CA12 mouse monoclonal antibody. (UM500086; heat-induced epitope retrieval by 10mM citric buffer, pH6.0, 120°C for 3min)



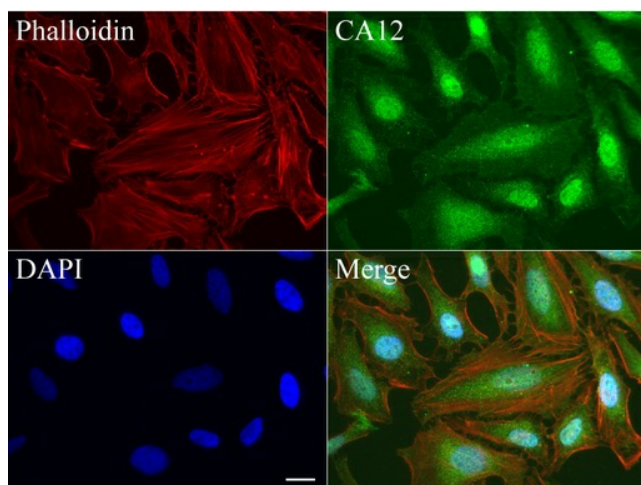
Immunohistochemical staining of paraffin-embedded Adenocarcinoma of Human breast tissue using anti-CA12 mouse monoclonal antibody. (UM500086; heat-induced epitope retrieval by 10mM citric buffer, pH6.0, 120°C for 3min)



Immunohistochemical staining of paraffin-embedded Carcinoma of Human kidney tissue using anti-CA12 mouse monoclonal antibody. (UM500086; heat-induced epitope retrieval by 10mM citric buffer, pH6.0, 120°C for 3min)



Western blot of cell lysates (35ug) from A549. Dilution: 1:500



Immunofluorescent staining of HeLa cells using anti-CA12 mouse monoclonal antibody (UM500086, green, 1:50). Actin filaments were labeled with Alexa Fluor® 594 Phalloidin (red), and nuclear with DAPI (blue). Scale bar, 20µm.