

## Product datasheet for **UM500078**

### **PBX1 Mouse Monoclonal Antibody [Clone ID: UMAB111]**

#### **Product data:**

Product Type:	Primary Antibodies
Clone Name:	UMAB111
Applications:	10k-ChIP, IF, IHC
Recommended Dilution:	IHC 1:100~200
Reactivity:	Human, Mouse, Rat
Host:	Mouse
Isotype:	IgG1
Clonality:	Monoclonal
Immunogen:	Full length human recombinant protein of human PBX1(NP_002576) produced in HEK293 cell.
Formulation:	PBS (pH 7.3) containing 1% BSA, 50% glycerol and 0.02% sodium azide.
Concentration:	0.5~1.0 mg/ml (Lot Dependent)
Purification:	Purified from mouse ascites fluids or tissue culture supernatant by affinity chromatography (protein A/G)
Conjugation:	Unconjugated
Storage:	Store at -20°C as received.
Stability:	Stable for 12 months from date of receipt.
Predicted Protein Size:	46.4 kDa
Gene Name:	PBX homeobox 1
Database Link:	<a href="#">NP_002576</a> <a href="#">Entrez Gene 5087 Human P40424</a>



[View online »](#)

**Background:**

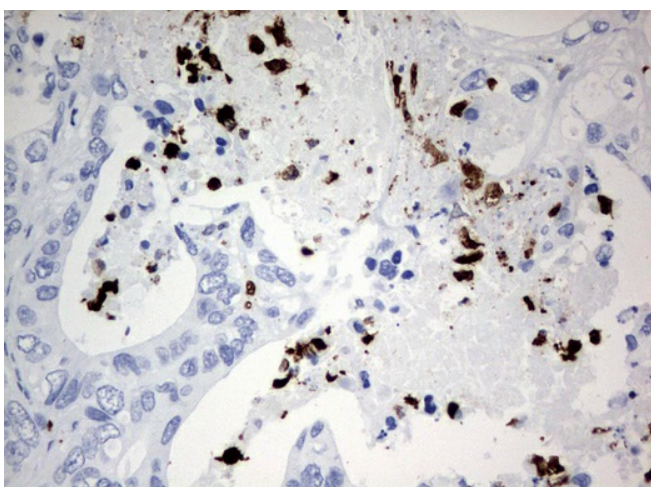
This gene encodes a nuclear protein that belongs to the PBX homeobox family of transcriptional factors. Studies in mice suggest that this gene may be involved in the regulation of osteogenesis, and required for skeletal patterning and programming. A chromosomal translocation, t(1;19) involving this gene and TCF3/E2A gene, is associated with pre-B-cell acute lymphoblastic leukemia. The resulting fusion protein, in which the DNA binding domain of E2A is replaced by the DNA binding domain of this protein, transforms cells by constitutively activating transcription of genes regulated by the PBX protein family. Alternatively spliced transcript variants encoding different isoforms have been found for this gene. [provided by RefSeq, Mar

**Synonyms:**

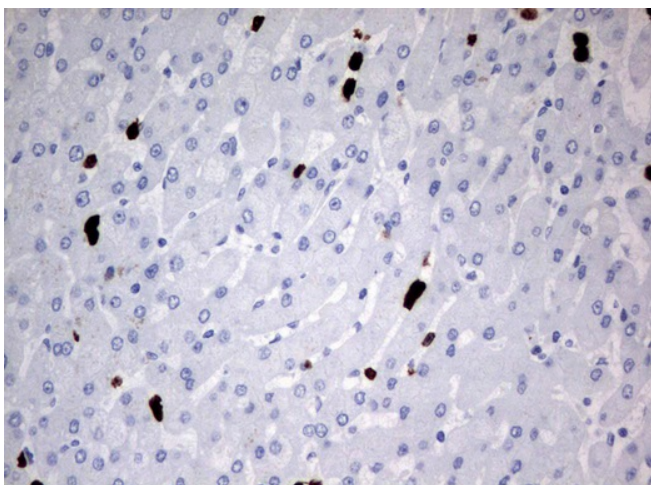
DKFZp686B09108; MGC126627

**Protein Families:**

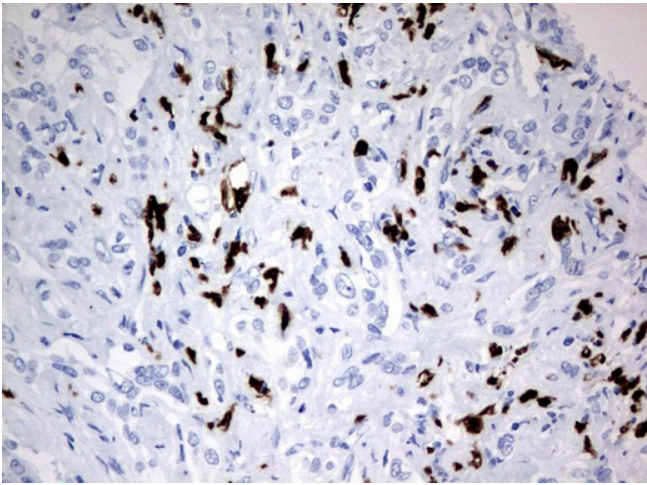
Druggable Genome, Stem cell - Pluripotency, Transcription Factors

**Product images:**

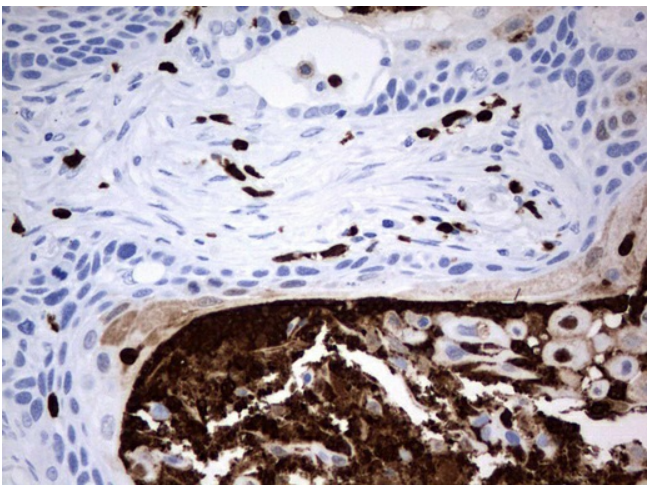
Immunohistochemical staining of paraffin-embedded Adenocarcinoma of Human colon tissue using anti-PBX1 mouse monoclonal antibody. (UM500078; heat-induced epitope retrieval by 10mM citric buffer, pH6.0, 120°C for 3min)



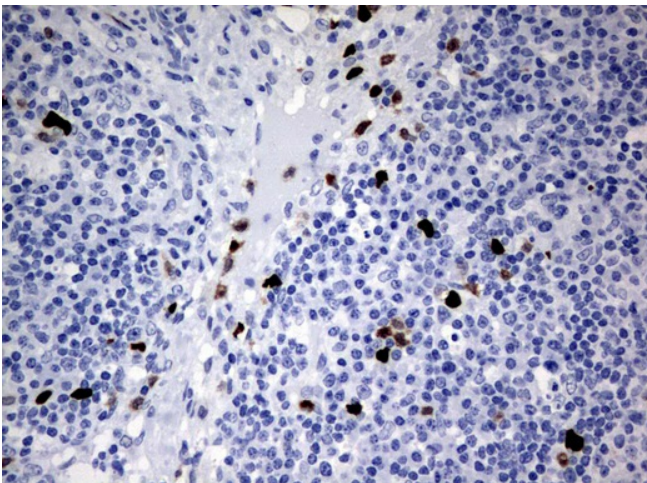
Immunohistochemical staining of paraffin-embedded Human liver tissue using anti-PBX1 mouse monoclonal antibody. (UM500078; heat-induced epitope retrieval by 10mM citric buffer, pH6.0, 120°C for 3min)



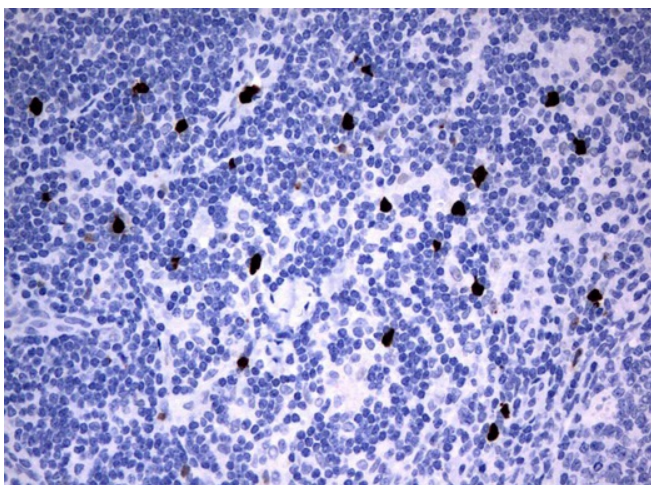
Immunohistochemical staining of paraffin-embedded Carcinoma of Human liver tissue using anti-PBX1 mouse monoclonal antibody. (UM500078; heat-induced epitope retrieval by 10mM citric buffer, pH6.0, 120°C for 3min)



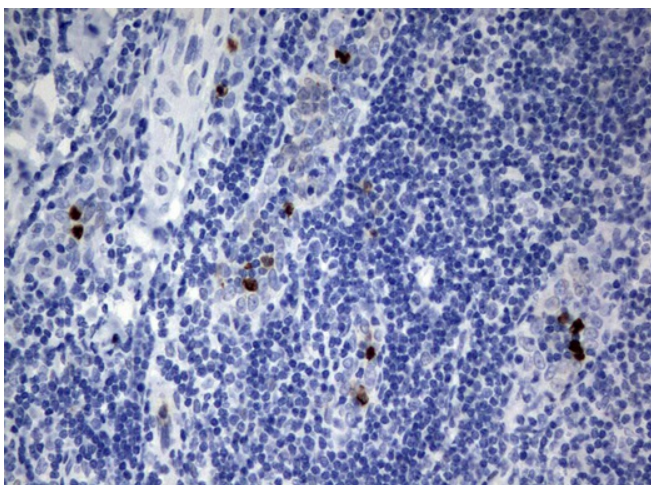
Immunohistochemical staining of paraffin-embedded Carcinoma of Human lung tissue using anti-PBX1 mouse monoclonal antibody. (UM500078; heat-induced epitope retrieval by 10mM citric buffer, pH6.0, 120°C for 3min)



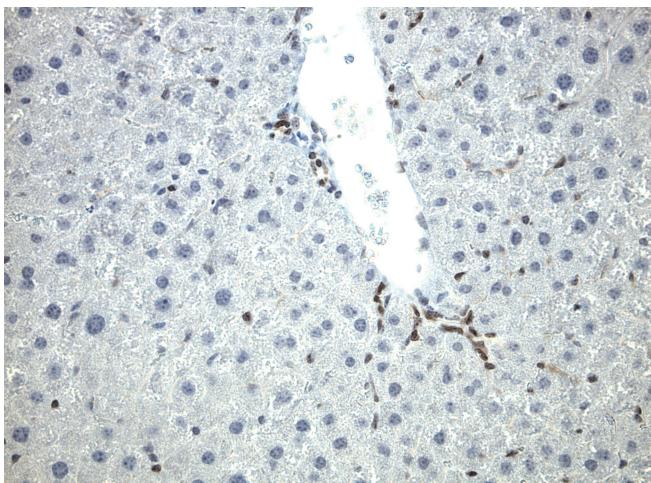
Immunohistochemical staining of paraffin-embedded Carcinoma of Human bladder tissue using anti-PBX1 mouse monoclonal antibody. (UM500078; heat-induced epitope retrieval by 10mM citric buffer, pH6.0, 120°C for 3min)



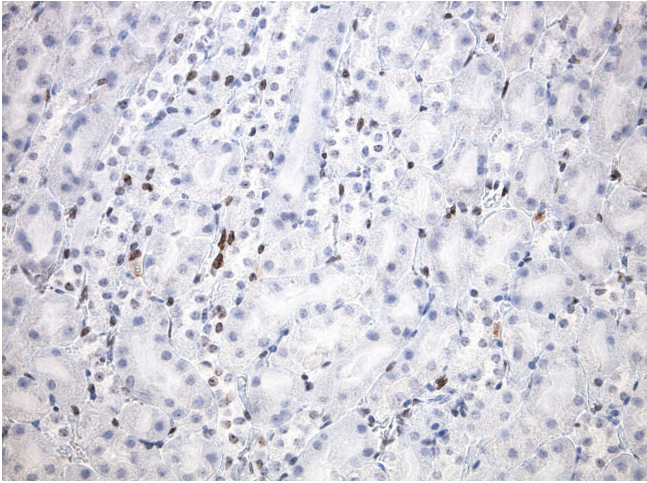
Immunohistochemical staining of paraffin-embedded Human lymph node tissue using anti-PBX1 mouse monoclonal antibody. (UM500078; heat-induced epitope retrieval by 10mM citric buffer, pH6.0, 120°C for 3min)



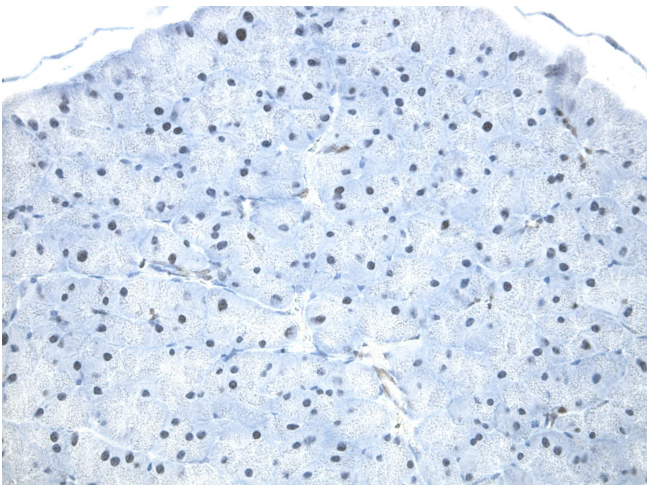
Immunohistochemical staining of paraffin-embedded Human tonsil using anti-PBX1 mouse monoclonal antibody. (UM500078; heat-induced epitope retrieval by 10mM citric buffer, pH6.0, 120°C for 3min)



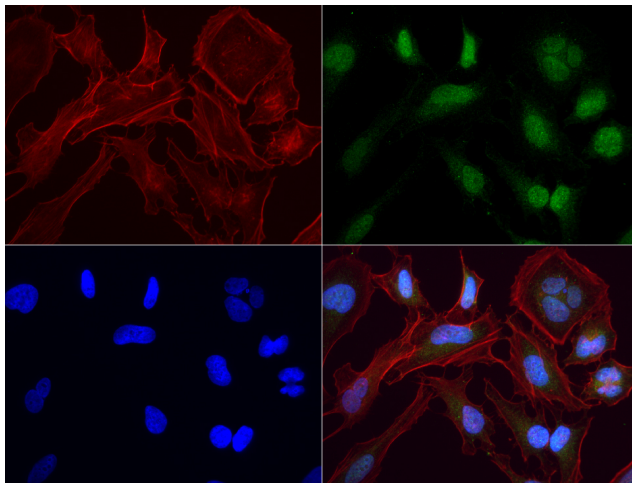
Immunohistochemical staining of paraffin-embedded mouse liver using mouse anti-PBX1 clone UMAB111 mouse monoclonal antibody. HIER TEE buffer ([B21-100]) (pH9) at 110C for 10 min, UM500078 (1:100). Detection was done with Klear Mouse (C/N [D52-18]) DAB Chromogen Kit.



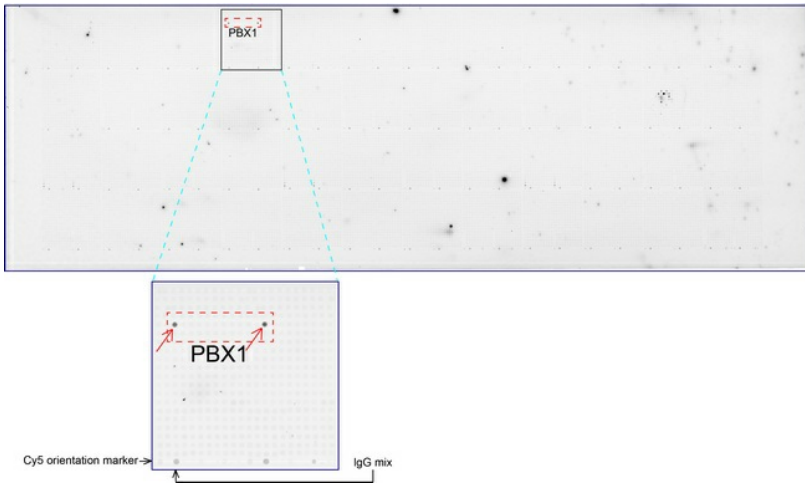
Immunohistochemical staining of paraffin-embedded mouse kidney using mouse anti-PBX1 clone UMAB111 mouse monoclonal antibody. HIER TEE buffer ([B21-100]) (pH9) at 110C for 10 min, UM500078 (1:100). Detection was done with Klear Mouse (C/N [D52-18]) DAB Chromogen Kit.



Immunohistochemical staining of paraffin-embedded mouse pancreas using mouse anti-PBX1 clone UMAB111 mouse monoclonal antibody. HIER TEE buffer ([B21-100]) (pH9) at 110C for 10 min, UM500078 (1:100). Detection was done with Klear Mouse (C/N [D52-18]) DAB Chromogen Kit.



Immunofluorescent staining of HeLa cells using anti-PBX1 mouse monoclonal antibody (UM500078, green, 1:50). Actin filaments were labeled with Alexa Fluor® 594 Phalloidin (red), and nuclear with DAPI (blue).



OriGene overexpression protein microarray chip was immunostained with UltraMAB anti-PBX1 mouse monoclonal antibody (UM500078). The positive reactive proteins are highlighted with two red arrows in the enlarged subarray. All the positive controls spotted in this subarray are also labeled for clarification.