

## Product datasheet for **UM500074CF**

### IRF6 Mouse Monoclonal Antibody [Clone ID: UMAB106]

#### Product data:

Product Type:	Primary Antibodies
Clone Name:	UMAB106
Applications:	IF, IHC, WB
Recommended Dilution:	WB 1:500, IHC 1:100
Reactivity:	Human, Monkey, Dog, Mouse, Rat
Host:	Mouse
Isotype:	IgG2b
Clonality:	Monoclonal
Immunogen:	Full length human recombinant protein of human IRF6(NP_006138) produced in HEK293 Cell.
Formulation:	Lyophilized powder (original buffer 1X PBS, pH 7.3, 8% trehalose)
Reconstitution Method:	For reconstitution, we recommend adding 100uL distilled water to a final antibody concentration of about 1 mg/mL. To use this carrier-free antibody for conjugation experiment, we strongly recommend performing another round of desalting process. (OriGene recommends Zeba Spin Desalting Columns, 7KMWCO from Thermo Scientific)
Purification:	Purified from mouse ascites fluids or tissue culture supernatant by affinity chromatography (protein A/G)
Conjugation:	Unconjugated
Storage:	Store at -20°C as received.
Stability:	Stable for 12 months from date of receipt.
Predicted Protein Size:	52.9 kDa
Gene Name:	interferon regulatory factor 6
Database Link:	<a href="#">NP_006138</a> <a href="#">Entrez Gene 54139</a> <a href="#">MouseEntrez Gene 364081</a> <a href="#">RatEntrez Gene 480015</a> <a href="#">DogEntrez Gene 3664</a> <a href="#">Human</a> <a href="#">O14896</a>



[View online »](#)

**Background:**

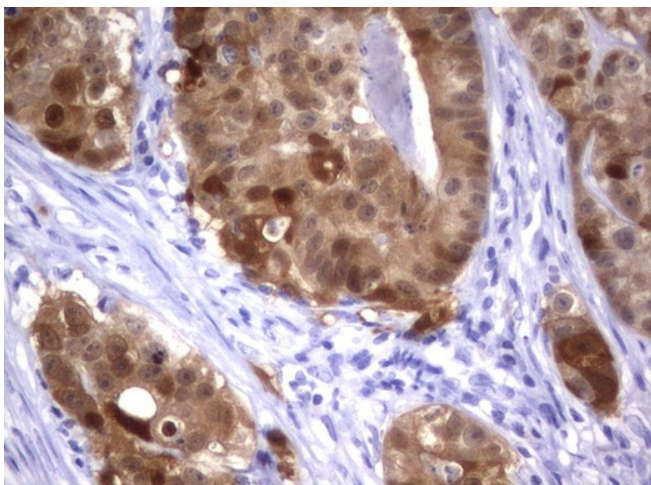
This gene encodes a member of the interferon regulatory transcription factor (IRF) family. Family members share a highly-conserved N-terminal helix-turn-helix DNA-binding domain and a less conserved C-terminal protein-binding domain. The encoded protein may be a transcriptional activator. Mutations in this gene can cause van der Woude syndrome and popliteal pterygium syndrome. Mutations in this gene are also associated with non-syndromic orofacial cleft type 6. Alternate splicing results in multiple transcript variants. [provided by RefSeq, May 2011]

**Synonyms:**

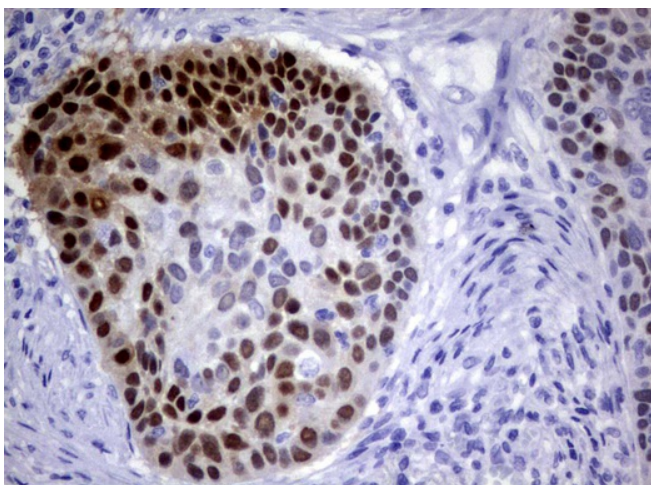
LPS; OFC6; PIT; PPS; PPS1; VWS; VWS1

**Protein Families:**

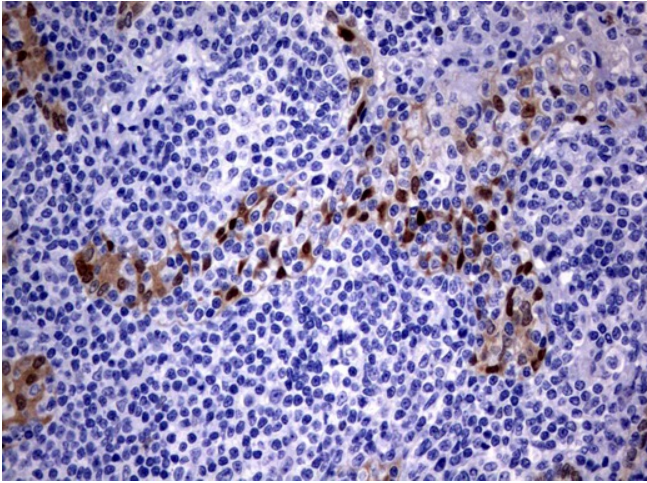
ES Cell Differentiation/IPS, Transcription Factors

**Product images:**

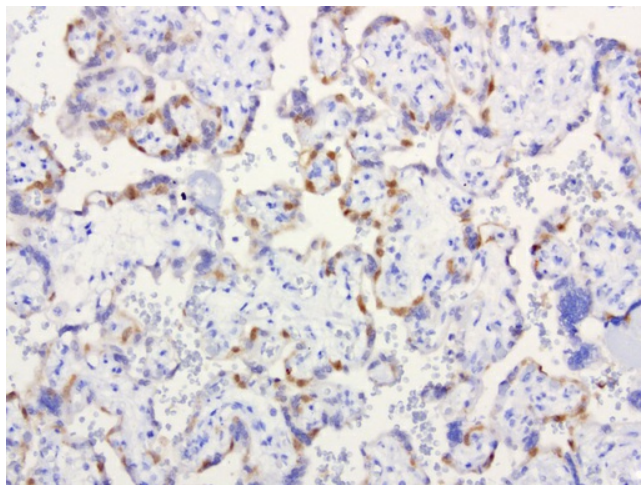
Immunohistochemical staining of paraffin-embedded Adenocarcinoma of Human colon tissue using anti-IRF6 mouse monoclonal antibody. ([UM500074]; heat-induced epitope retrieval by 10mM citric buffer, pH6.0, 120°C for 3min)



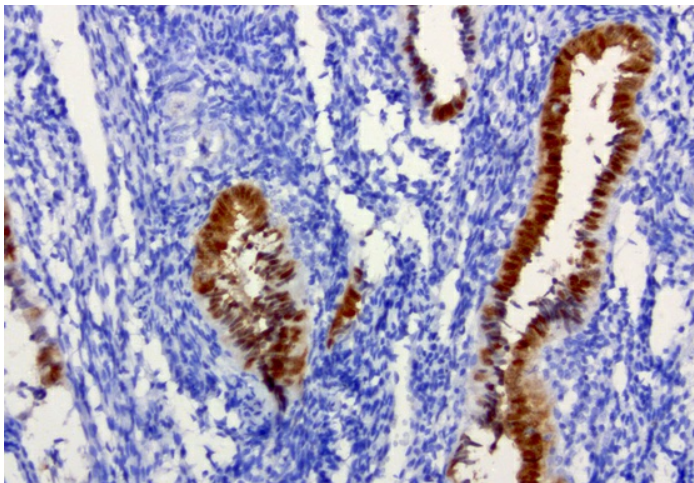
Immunohistochemical staining of paraffin-embedded Carcinoma of Human lung tissue using anti-IRF6 mouse monoclonal antibody. ([UM500074]; heat-induced epitope retrieval by 10mM citric buffer, pH6.0, 120°C for 3min)



Immunohistochemical staining of paraffin-embedded Human lymphoma tissue using anti-IRF6 mouse monoclonal antibody. ([UM500074]); heat-induced epitope retrieval by 10mM citric buffer, pH6.0, 120°C for 3min)

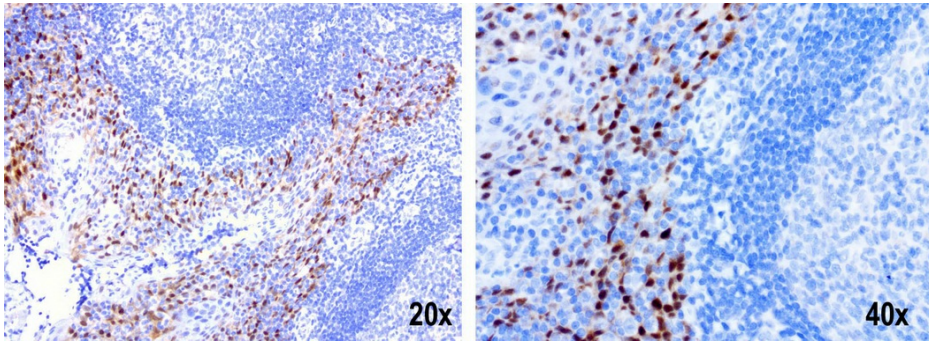


Immunohistochemical staining of paraffin-embedded human placenta using anti-IRF6 clone UMAB106 mouse monoclonal antibody at 1:200 with Polink2 Broad HRP DAB detection kit ([UM500074]); heat-induced epitope retrieval with citrate buffer, pH6.0at 95-100C. Strong nuclear staining is seen in placenta.

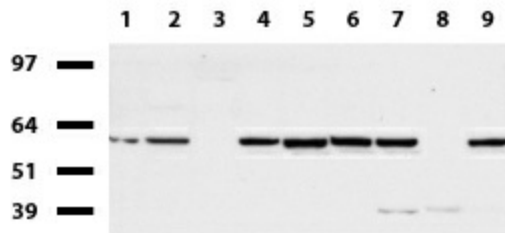


Immunohistochemical staining of paraffin-embedded human endometrium using anti-IRF6 clone UMAB106 mouse monoclonal antibody at 1:200 with Polink2 Broad HRP DAB detection kit ([UM500074]); heat-induced epitope retrieval with citrate buffer, pH6.0at 95-100C. Strong nuclear staining is seen in placenta.

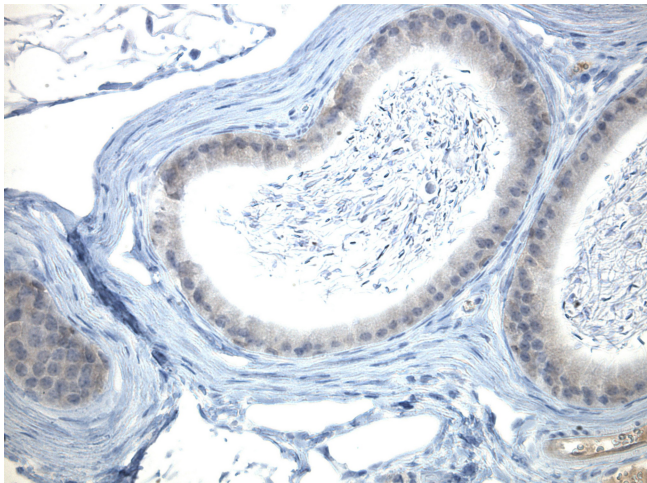




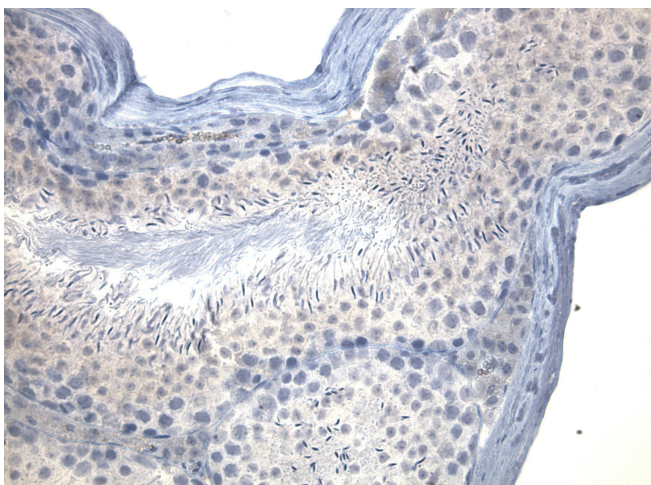
Immunohistochemical staining of paraffin-embedded human tonsil tissue using anti-IRF6 clone UMAB106 mouse monoclonal antibody at 1:200 with Polink2 Broad HRP DAB detection kit ([UM500074]); heat-induced epitope retrieval with citrate buffer, pH6.0 at 95-100C. Strong nuclear staining is seen in both the 20 and 40x however the 20x reveal the the squamous epithelial are positive for IRF6 and the cells of the germinal and non germinal centers are negative for IRF6.



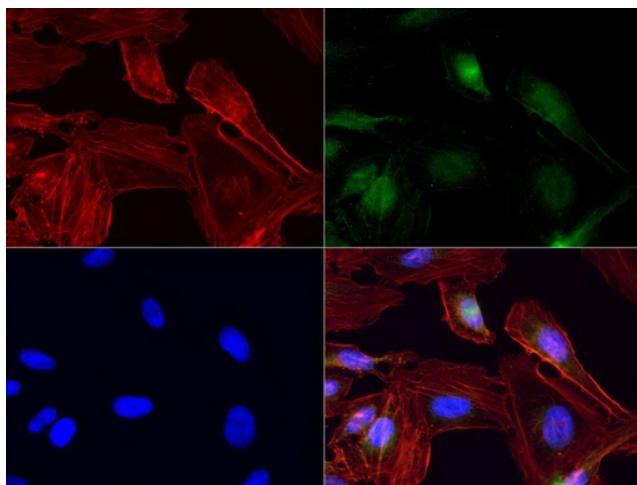
Western blot of cell lysates (35ug) from 9 different cell lines (1: HepG2, 2: HeLa, 3: SV-T2, 4: A549, 5: COS7, 6: Jurkat, 7: MDCK, 8: PC-12, 9: MCF7). Dilution: 1:500



Immunohistochemical staining of paraffin-embedded mouse epididymis tissue using mouse anti-IRF6 clone UMAB106 mouse monoclonal antibody. HIER TEE buffer ([B21-100]) (pH9) at 110C for 10 min, [UM500074] (1:100). Detection was done with Klear Mouse (C/N [D52-18]) DAB Chromogen Kit.



Immunohistochemical staining of paraffin-embedded mouse testis using mouse anti-IRF6 clone UMAB106 mouse monoclonal antibody. HIER TEE buffer ([B21-100]) (pH9) at 110C for 10 min, [UM500074] (1:100). Detection was done with Klear Mouse (C/N [D52-18]) DAB Chromogen Kit.



Immunofluorescent staining of HeLa cells using anti-IRF6 mouse monoclonal antibody ([UM500074], green, 1:100). Actin filaments were labeled with TRITC-phalloidin (red), and nuclear with DAPI (blue).