

Product datasheet for **UM500058CF**

LAT2 (SLC7A8) Mouse Monoclonal Antibody [Clone ID: UMAB70]

Product data:

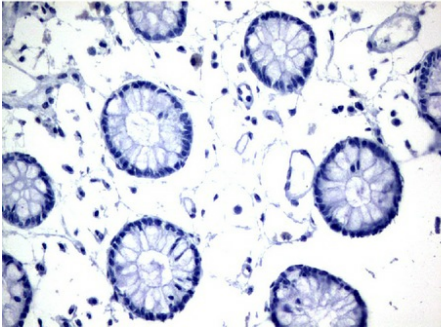
Product Type:	Primary Antibodies
Clone Name:	UMAB70
Applications:	10k-ChIP, IF, IHC, WB
Recommended Dilution:	IHC 1:100
Reactivity:	Human, Mouse, Rat
Host:	Mouse
Isotype:	IgG1
Clonality:	Monoclonal
Immunogen:	Full length human recombinant protein of human SLC7A8(NP_036376) produced in HEK293T cell.
Formulation:	Lyophilized powder (original buffer 1X PBS, pH 7.3, 8% trehalose)
Reconstitution Method:	For reconstitution, we recommend adding 100uL distilled water to a final antibody concentration of about 1 mg/mL. To use this carrier-free antibody for conjugation experiment, we strongly recommend performing another round of desalting process. (OriGene recommends Zeba Spin Desalting Columns, 7KMWCO from Thermo Scientific)
Purification:	Purified from mouse ascites fluids or tissue culture supernatant by affinity chromatography (protein A/G)
Conjugation:	Unconjugated
Storage:	Store at -20°C as received.
Stability:	Stable for 12 months from date of receipt.
Predicted Protein Size:	58.2 kDa
Gene Name:	solute carrier family 7 member 8
Database Link:	NP_036376 Entrez Gene 50934 Mouse Entrez Gene 84551 Rat Entrez Gene 23428 Human Q9UHI5
Synonyms:	LAT2; LPI-PC1
Protein Families:	Druggable Genome, Transmembrane



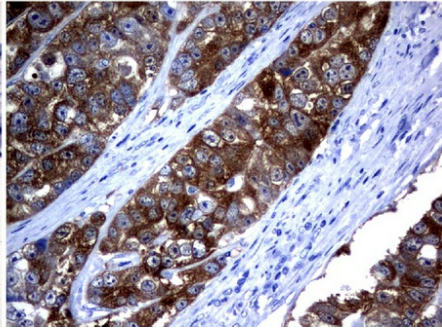
[View online »](#)

Product images:

Normal Colon



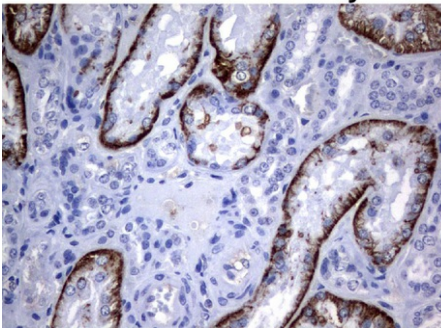
Colorectal Cancer



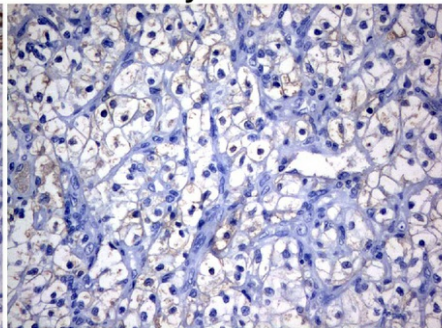
UM500058

Immunohistochemical staining of paraffin-embedded Human normal colon tissue and colorectal cancer tissue using anti-SLC7A8 mouse monoclonal antibody. ([UM500058]; heat-induced epitope retrieval by 10mM citric buffer, pH6.0, 120°C for 3min)

Normal Kidney



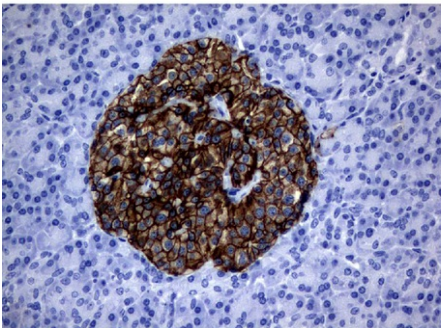
Kidney Carcinoma



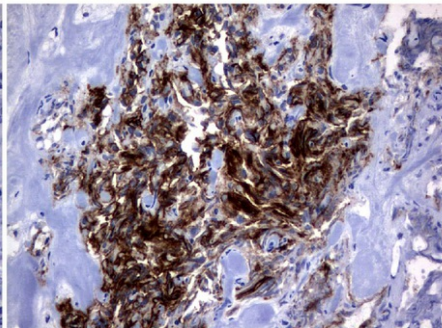
UM500058

Immunohistochemical staining of paraffin-embedded Human normal kidney tissue and kidney carcinoma tissue using anti-SLC7A8 mouse monoclonal antibody. ([UM500058]; heat-induced epitope retrieval by 10mM citric buffer, pH6.0, 120°C for 3min)

Normal Pancreas

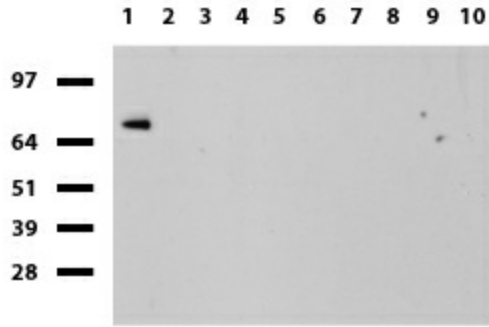


Pancreatic Cancer

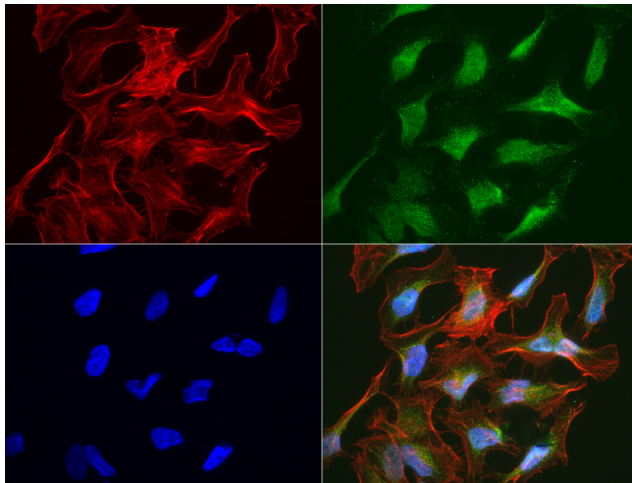


UM500058

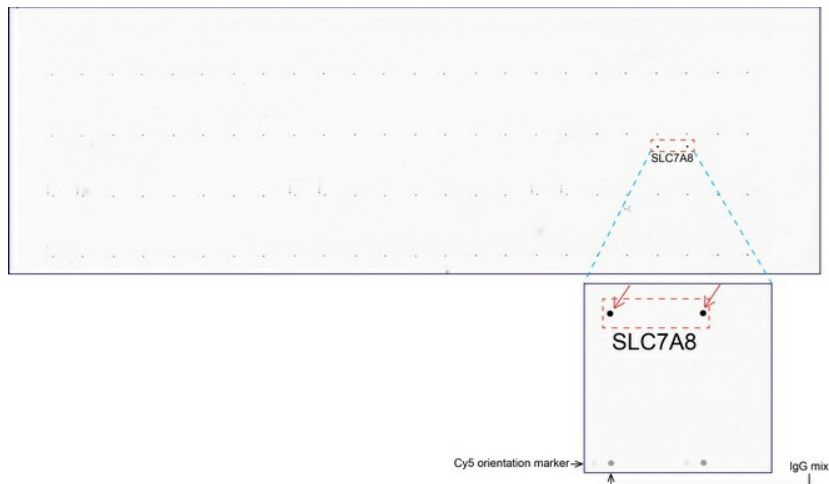
Immunohistochemical staining of paraffin-embedded Human normal pancreas tissue and pancreatic cancer tissue using anti-SLC7A8 mouse monoclonal antibody. ([UM500058]; heat-induced epitope retrieval by 10mM citric buffer, pH6.0, 120°C for 3min)



Western blot of human tissue lysates (15ug) from 10 different tissues (1: Testis, 2: Omentum, 3: Uterus, 4: Breast, 5: Brain, 6: Liver, 7: Ovary, 8: Thyroid 9: Colon, 10: Spleen). Dilution: 1:500.



Immunofluorescent staining of HeLa cells using anti-SLC7A8 mouse monoclonal antibody ([UM500058], green, 1:50). Actin filaments were labeled with Alexa Fluor® 594 Phalloidin (red), and nuclear with DAPI (blue).



OriGene overexpression protein microarray chip was immunostained with UltraMAB anti-SLC7A8 mouse monoclonal antibody ([UM500058]). The positive reactive proteins are highlighted with two red arrows in the enlarged subarray. All the positive controls spotted in this subarray are also labeled for clarification.