

## Product datasheet for **UM500058**

### **LAT2 (SLC7A8) Mouse Monoclonal Antibody [Clone ID: UMAB70]**

#### **Product data:**

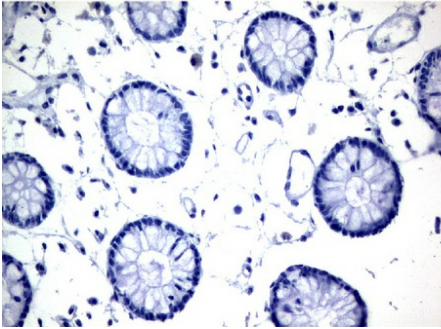
<b>Product Type:</b>	Primary Antibodies
<b>Clone Name:</b>	UMAB70
<b>Applications:</b>	10k-ChIP, IF, IHC, WB
<b>Recommended Dilution:</b>	IHC 1:100
<b>Reactivity:</b>	Human, Mouse, Rat
<b>Host:</b>	Mouse
<b>Isotype:</b>	IgG1
<b>Clonality:</b>	Monoclonal
<b>Immunogen:</b>	Full length human recombinant protein of human SLC7A8(NP_036376) produced in HEK293T cell.
<b>Formulation:</b>	PBS (pH 7.3) containing 1% BSA, 50% glycerol and 0.02% sodium azide.
<b>Concentration:</b>	0.5~1.0 mg/ml (Lot Dependent)
<b>Purification:</b>	Purified from mouse ascites fluids or tissue culture supernatant by affinity chromatography (protein A/G)
<b>Conjugation:</b>	Unconjugated
<b>Storage:</b>	Store at -20°C as received.
<b>Stability:</b>	Stable for 12 months from date of receipt.
<b>Predicted Protein Size:</b>	58.2 kDa
<b>Gene Name:</b>	solute carrier family 7 member 8
<b>Database Link:</b>	<a href="#">NP_036376</a> <a href="#">Entrez Gene 50934 Mouse</a> <a href="#">Entrez Gene 84551 Rat</a> <a href="#">Entrez Gene 23428 Human</a> <a href="#">Q9UHI5</a>
<b>Synonyms:</b>	LAT2; LPI-PC1
<b>Protein Families:</b>	Druggable Genome, Transmembrane



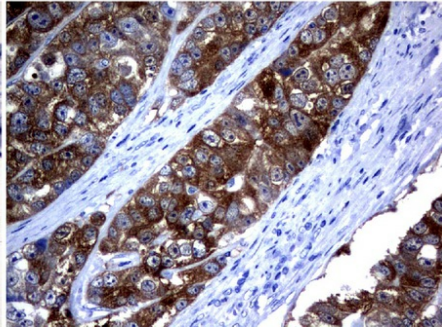
[View online »](#)

Product images:

Normal Colon



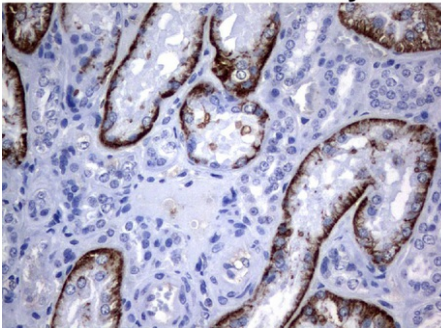
Colorectal Cancer



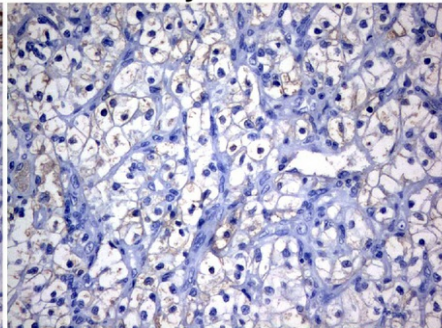
UM500058

Immunohistochemical staining of paraffin-embedded Human normal colon tissue and colorectal cancer tissue using anti-SLC7A8 mouse monoclonal antibody. (UM500058; heat-induced epitope retrieval by 10mM citric buffer, pH6.0, 120°C for 3min)

Normal Kidney



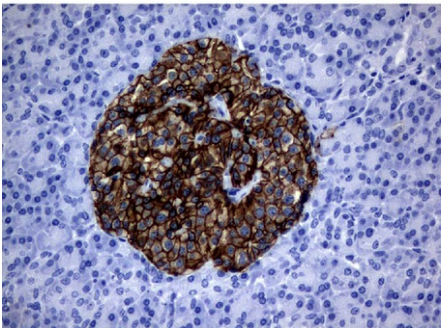
Kidney Carcinoma



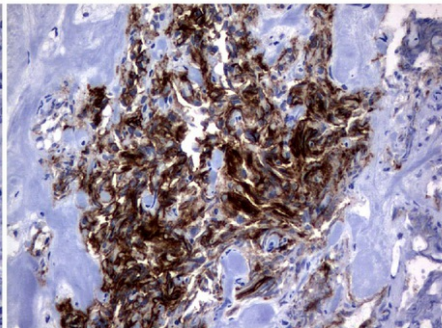
UM500058

Immunohistochemical staining of paraffin-embedded Human normal kidney tissue and kidney carcinoma tissue using anti-SLC7A8 mouse monoclonal antibody. (UM500058; heat-induced epitope retrieval by 10mM citric buffer, pH6.0, 120°C for 3min)

Normal Pancreas

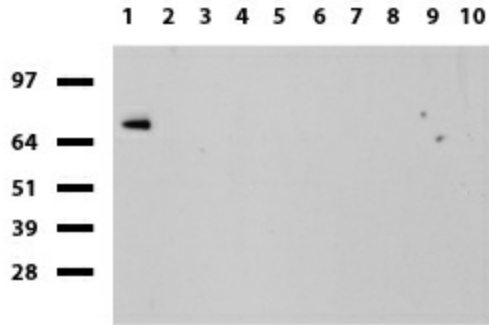


Pancreatic Cancer

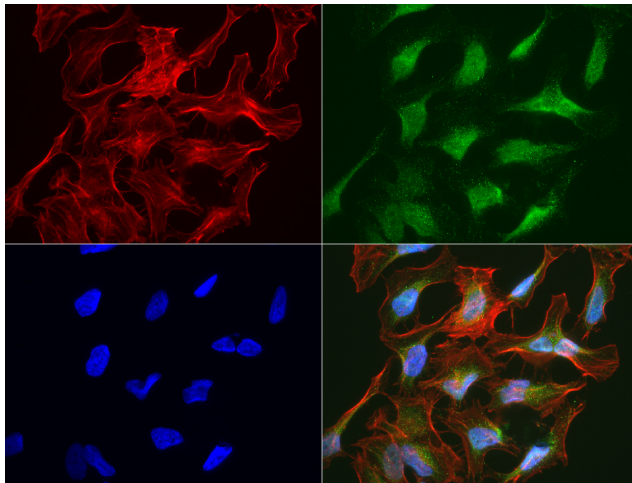


UM500058

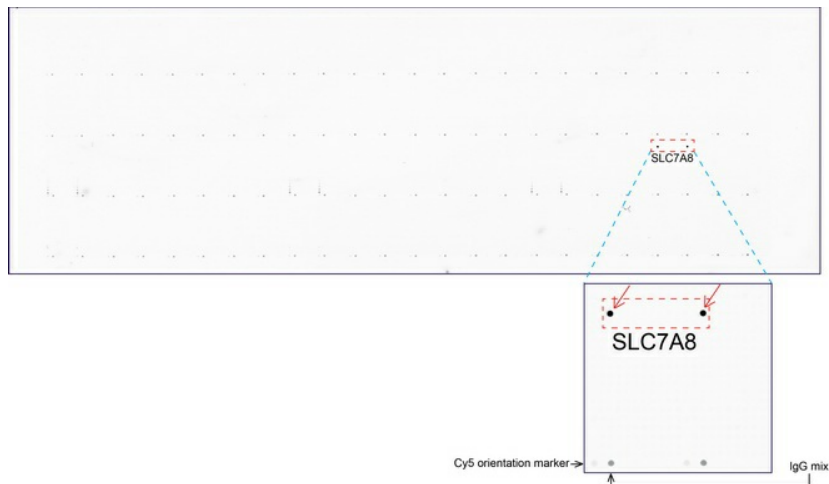
Immunohistochemical staining of paraffin-embedded Human normal pancreas tissue and pancreatic cancer tissue using anti-SLC7A8 mouse monoclonal antibody. (UM500058; heat-induced epitope retrieval by 10mM citric buffer, pH6.0, 120°C for 3min)



Western blot of human tissue lysates (15ug) from 10 different tissues (1: Testis, 2: Omentum, 3: Uterus, 4: Breast, 5: Brain, 6: Liver, 7: Ovary, 8: Thyroid 9: Colon, 10: Spleen). Dilution: 1:500.



Immunofluorescent staining of HeLa cells using anti-SLC7A8 mouse monoclonal antibody (UM500058, green, 1:50). Actin filaments were labeled with Alexa Fluor® 594 Phalloidin (red), and nuclear with DAPI (blue).



OriGene overexpression protein microarray chip was immunostained with UltraMAB anti-SLC7A8 mouse monoclonal antibody (UM500058). The positive reactive proteins are highlighted with two red arrows in the enlarged subarray. All the positive controls spotted in this subarray are also labeled for clarification.