

## Product datasheet for **UM500057CF**

### Syntenin (SDCBP) Mouse Monoclonal Antibody [Clone ID: UMAB69]

#### Product data:

Product Type:	Primary Antibodies
Clone Name:	UMAB69
Applications:	10k-ChIP, IF, IHC, WB
Recommended Dilution:	WB 1:500, IHC 1:100
Reactivity:	Human, Mouse, Rat
Host:	Mouse
Isotype:	IgG2b
Clonality:	Monoclonal
Immunogen:	Full length human recombinant protein of human SDCBP(NP_005616) produced in HEK293T cell.
Formulation:	Lyophilized powder (original buffer 1X PBS, pH 7.3, 8% trehalose)
Reconstitution Method:	For reconstitution, we recommend adding 100uL distilled water to a final antibody concentration of about 1 mg/mL. To use this carrier-free antibody for conjugation experiment, we strongly recommend performing another round of desalting process. (OriGene recommends Zeba Spin Desalting Columns, 7KMWCO from Thermo Scientific)
Purification:	Purified from mouse ascites fluids or tissue culture supernatant by affinity chromatography (protein A/G)
Conjugation:	Unconjugated
Storage:	Store at -20°C as received.
Stability:	Stable for 12 months from date of receipt.
Predicted Protein Size:	32.3 kDa
Gene Name:	syndecan binding protein
Database Link:	<a href="#">NP_005616</a> <a href="#">Entrez Gene 53378 Mouse</a> <a href="#">Entrez Gene 83841 Rat</a> <a href="#">Entrez Gene 6386 Human</a> <a href="#">O00560</a>



[View online »](#)

**Background:**

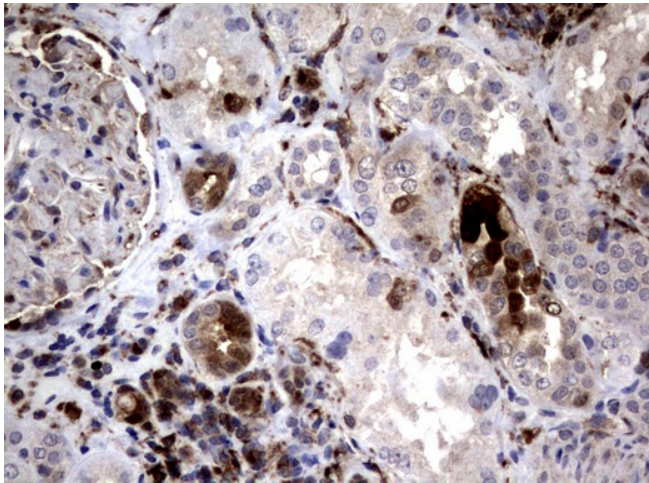
The protein encoded by this gene was initially identified as a molecule linking syndecan-mediated signaling to the cytoskeleton. The syntenin protein contains tandemly repeated PDZ domains that bind the cytoplasmic, C-terminal domains of a variety of transmembrane proteins. This protein may also affect cytoskeletal-membrane organization, cell adhesion, protein trafficking, and the activation of transcription factors. The protein is primarily localized to membrane-associated adherens junctions and focal adhesions but is also found at the endoplasmic reticulum and nucleus. Alternative splicing results in multiple transcript variants encoding different isoforms. [provided by RefSeq, Jul 2008]

**Synonyms:**

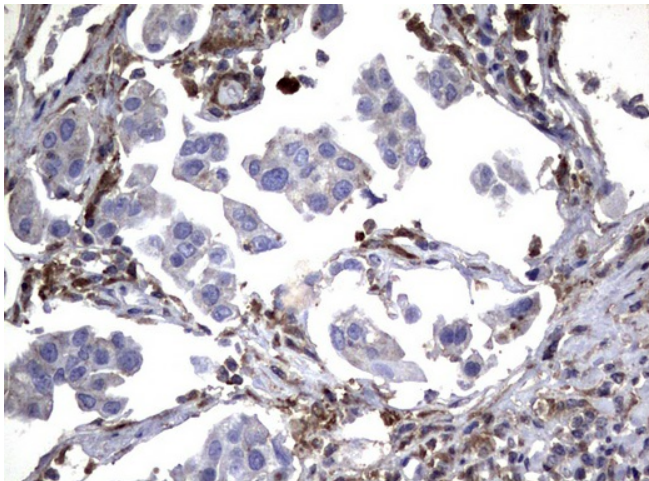
MDA-9; MDA9; ST1; SYCL; TACIP18

**Protein Families:**

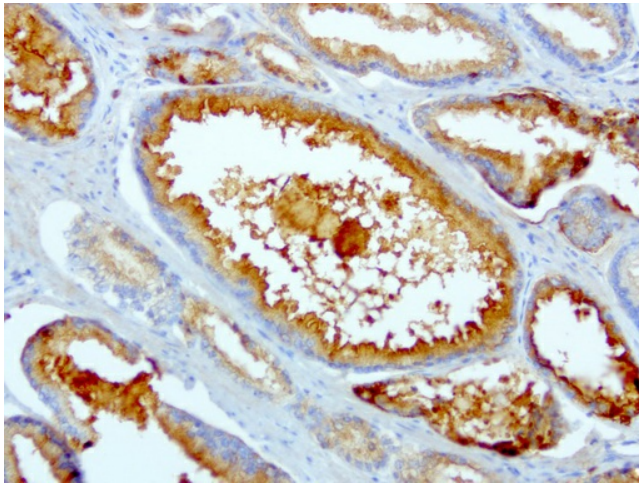
Druggable Genome, Transmembrane

**Product images:**

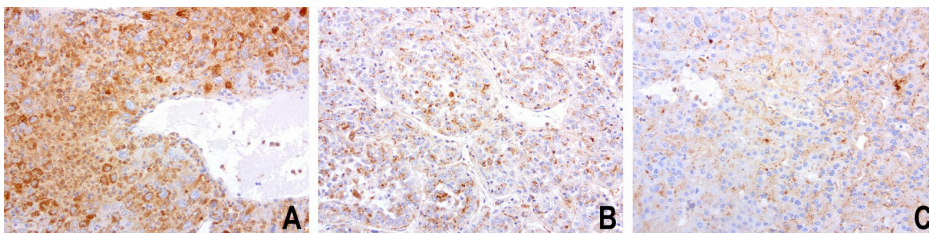
Immunohistochemical staining of paraffin-embedded Human Kidney tissue using anti-SDCBP mouse monoclonal antibody. ([UM500057]; heat-induced epitope retrieval by 10mM citric buffer, pH6.0, 120°C for 3min)



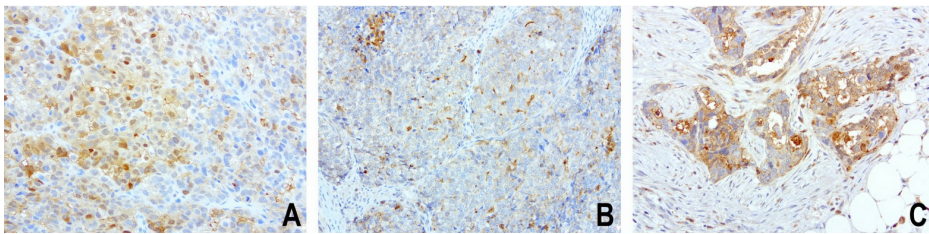
Immunohistochemical staining of paraffin-embedded Carcinoma of Human bladder tissue using anti-SDCBP mouse monoclonal antibody. ([UM500057]; heat-induced epitope retrieval by 10mM citric buffer, pH6.0, 120°C for 3min)



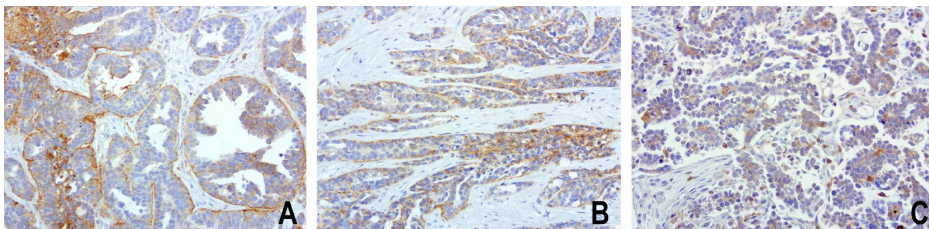
Immunohistochemical staining of paraffin-embedded human prostate cancer using anti-SDCBP clone UMAB69 mouse monoclonal antibody ([UM500057]) at 1:100 with Polink2 Broad HRP DAB detection kit; heat-induced epitope retrieval with GBI Citrate pH6.0 HIER buffer using pressure chamber for 3 minutes at 110C. Membrane and cytoplasmic staining is seen in tumor cells.



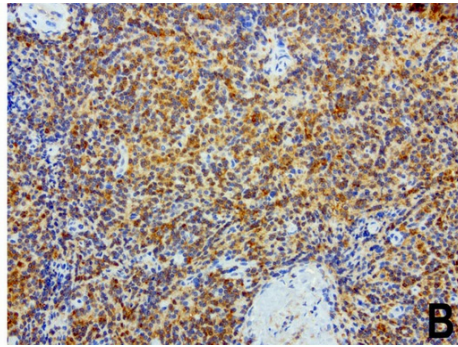
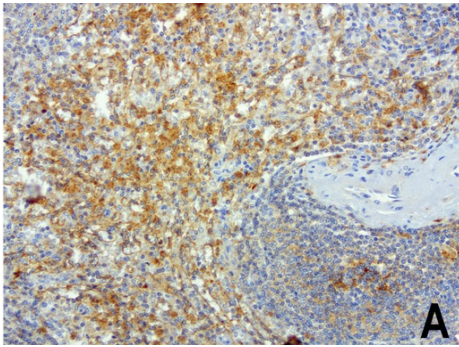
Immunohistochemical staining of paraffin-embedded composite of 3 human liver cancer cases using anti-SDCBP clone UMAB69 mouse monoclonal antibody ([UM500057]) at 1:100 with Polink2 Broad HRP DAB detection kit; heat-induced epitope retrieval with GBI Citrate pH6.0 HIER buffer using pressure chamber for 3 minutes at 110C. Membrane and cytoplasmic staining is seen in tumor cells with various intensity.



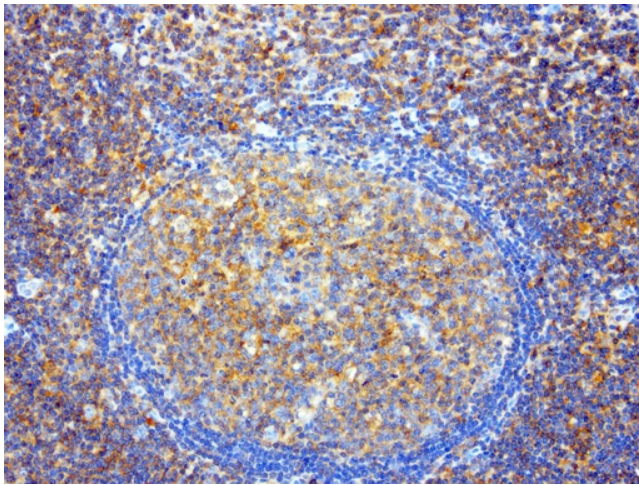
Immunohistochemical staining of paraffin-embedded composite of 3 human endometrial cancer cases using anti-SDCBP clone UMAB69 mouse monoclonal antibody ([UM500057]) at 1:100 with Polink2 Broad HRP DAB detection kit; heat-induced epitope retrieval with GBI Citrate pH6.0 HIER buffer using pressure chamber for 3 minutes at 110C. Membrane and cytoplasmic staining is seen in tumor cells with various intensity.



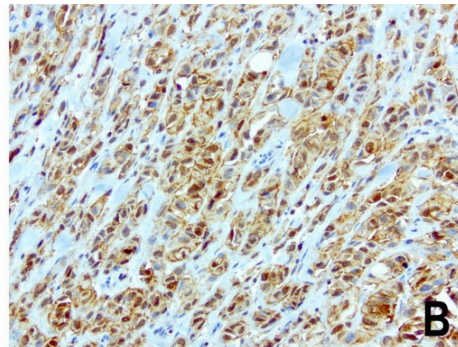
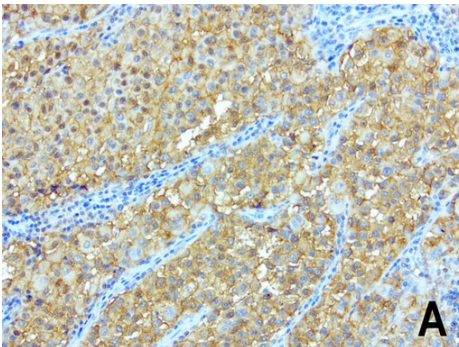
Immunohistochemical staining of paraffin-embedded composite of 3 human ovarian cancer cases using anti-SDCBP clone UMAB69 mouse monoclonal antibody ([UM500057]) at 1:100 with Polink2 Broad HRP DAB detection kit; heat-induced epitope retrieval with GBI Citrate pH6.0 HIER buffer using pressure chamber for 3 minutes at 110C. Membrane and cytoplasmic staining is seen in tumor cells with various intensity.



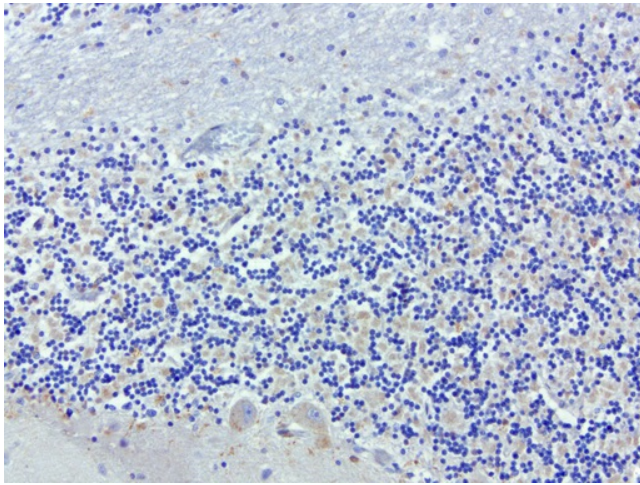
Immunohistochemical staining of paraffin-embedded composite of 2 human spleen cases using anti-SDCBP clone UMAB69 mouse monoclonal antibody ([UM500057]) at 1:100 with Polink2 Broad HRP DAB detection kit; heat-induced epitope retrieval with GBI Citrate pH6.0 HIER buffer using pressure chamber for 3 minutes at 110C. Membrane and cytoplasmic staining is seen in the cells of red pulp and white pulp.



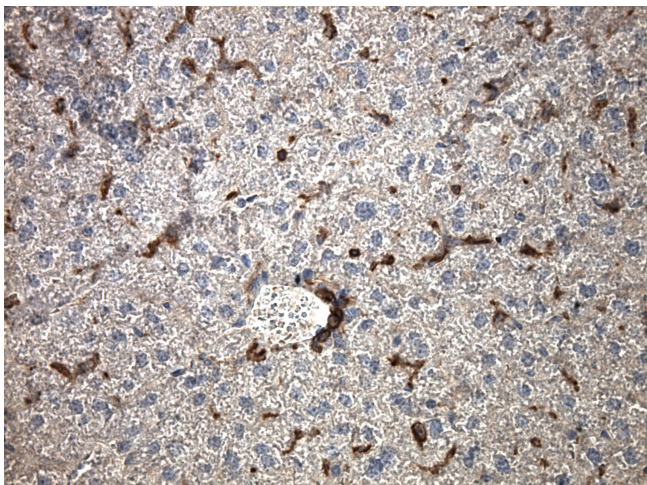
Immunohistochemical staining of paraffin-embedded tonsil using anti-SDCBP clone UMAB69 mouse monoclonal antibody ([UM500057]) at 1:100 with Polink2 Broad HRP DAB detection kit; heat-induced epitope retrieval with GBI Citrate pH6.0 HIER buffer using pressure chamber for 3 minutes at 110C. Membrane and cytoplasmic staining is seen in germinal and non-germinal center of the the tonsil.



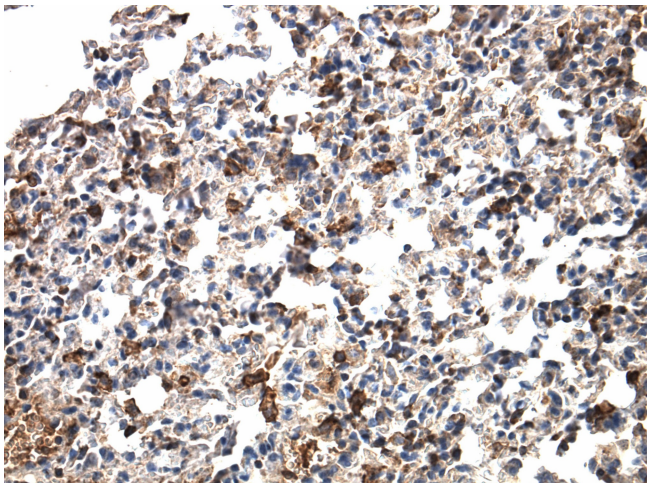
Immunohistochemical staining of paraffin-embedded composite of 2 human melanoma cases using anti-SDCBP clone UMAB69 mouse monoclonal antibody ([UM500057]) at 1:100 with Polink2 Broad HRP DAB detection kit; heat-induced epitope retrieval with GBI Citrate pH6.0 HIER buffer using pressure chamber for 3 minutes at 110C. Membrane, nuclear, and cytoplasmic staining is seen in tumor cells with various intensity.



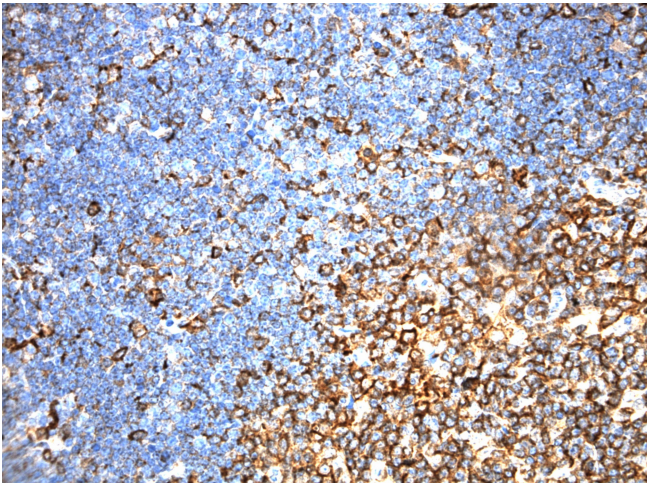
Immunohistochemical staining of paraffin-embedded human brain using anti-SDCBP clone UMAB69 mouse monoclonal antibody ([UM500057]) at 1:100 with Polink2 Broad HRP DAB detection kit; heat-induced epitope retrieval with GBI Citrate pH6.0 HIER buffer using pressure chamber for 3 minutes at 110C. Weak membrane and cytoplasmic staining.



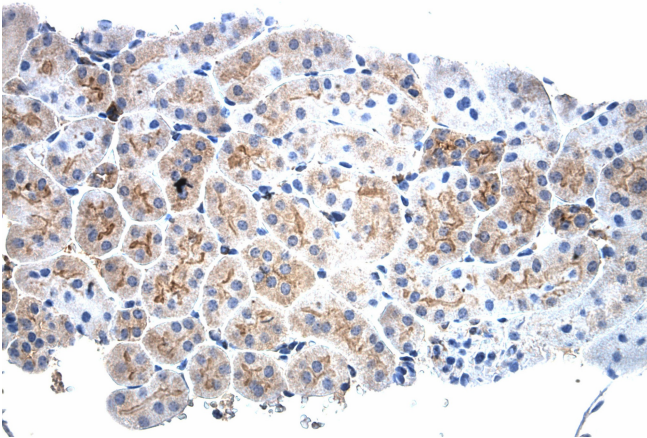
Immunohistochemical staining of paraffin-embedded mouse liver tissue using anti-SDCBP (SYNTINEN) clone UMAB69 mouse monoclonal antibody. HIER TEE buffer pH9 ([B21-100]) at 110C for 10 min, [UM500057] (1:100). Detection was done with Klear Mouse (C/N [D52-18]) DAB Kit.



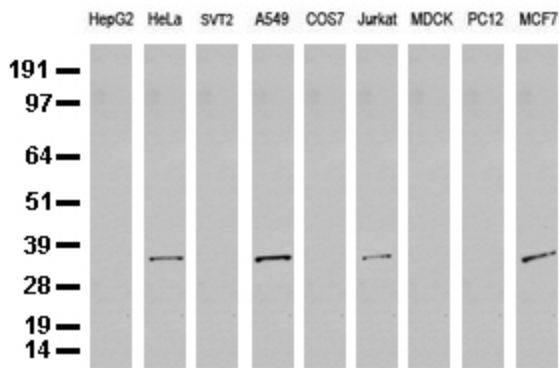
Immunohistochemical staining of paraffin-embedded mouse lung tissue using anti-SDCBP (SYNTINEN) clone UMAB69 mouse monoclonal antibody. HIER TEE buffer pH9 ([B21-100]) at 110C for 10 min, [UM500057] (1:100). Detection was done with Klear Mouse (C/N [D52-18]) DAB Kit.



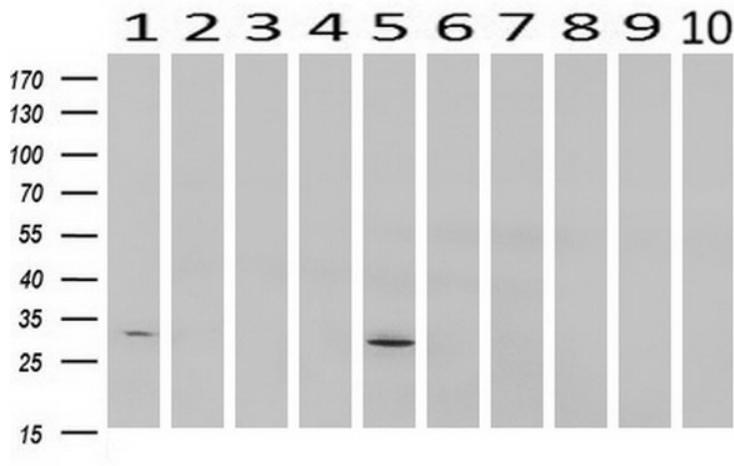
Immunohistochemical staining of paraffin-embedded mouse spleen tissue using anti-SDCBP (SYNTINEN) clone UMAB69 mouse monoclonal antibody. HIER TEE buffer pH9 ([B21-100]) at 110C for 10 min, [UM500057] (1:100). Detection was done with Klear Mouse (C/N [D52-18]) DAB Kit.



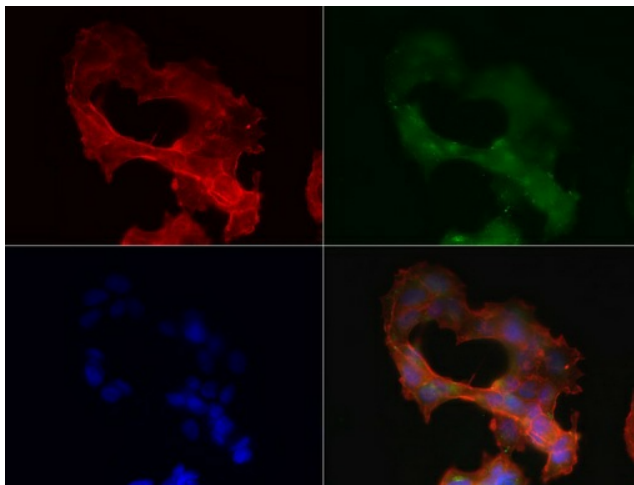
Immunohistochemical staining of paraffin-embedded mouse kidney tissue using anti-SDCBP (SYNTINEN) clone UMAB69 mouse monoclonal antibody. HIER TEE buffer pH9 ([B21-100]) at 110C for 10 min, [UM500057] (1:100). Detection was done with Klear Mouse (C/N [D52-18]) DAB Kit.



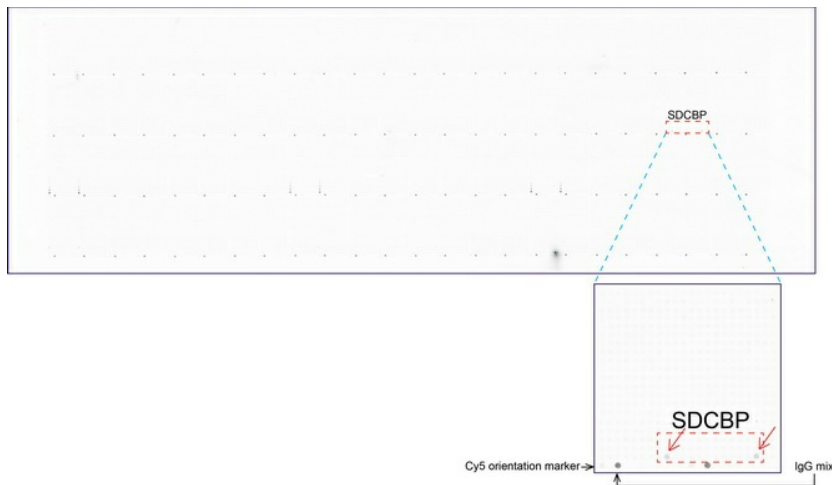
Western blot analysis of extracts (35ug) from 9 different cell lines by using anti-SDCBP monoclonal antibody (Clone UMAB69).



Western blot analysis of extracts (10ug) from 10 Human tissue by using anti-SDCBP monoclonal antibody at 1:200 (1: Testis; 2: Omentum; 3: Uterus; 4: Breast; 5: Brain; 6: Liver; 7: Ovary; 8: Thyroid gland; 9: colon;10: spleen).



Immunofluorescent staining of MCF-7 cells using anti-SDCBP mouse monoclonal antibody ([UM500057], green, 1:50). Actin filaments were labeled with TRITC-phalloidin (red), and nuclear with DAPI (blue).



OriGene overexpression protein microarray chip was immunostained with UltraMAB anti-SDCBP mouse monoclonal antibody ([UM500057]). The positive reactive proteins are highlighted with two red arrows in the enlarged subarray. All the positive controls spotted in this subarray are also labeled for clarification.