

## Product datasheet for **UM500047CF**

### SOX5 Mouse Monoclonal Antibody [Clone ID: UMAB53]

#### Product data:

Product Type:	Primary Antibodies
Clone Name:	UMAB53
Applications:	10k-ChIP, IHC, WB
Recommended Dilution:	IHC 1:100
Reactivity:	Human, Mouse, Rat
Host:	Mouse
Isotype:	IgG3
Clonality:	Monoclonal
Immunogen:	Full length human recombinant protein of human SOX5(NP_008871) produced in HEK293T cell.
Formulation:	Lyophilized powder (original buffer 1X PBS, pH 7.3, 8% trehalose)
Reconstitution Method:	For reconstitution, we recommend adding 100uL distilled water to a final antibody concentration of about 1 mg/mL. To use this carrier-free antibody for conjugation experiment, we strongly recommend performing another round of desalting process. (OriGene recommends Zeba Spin Desalting Columns, 7KMWCO from Thermo Scientific)
Purification:	Purified from mouse ascites fluids or tissue culture supernatant by affinity chromatography (protein A/G)
Conjugation:	Unconjugated
Storage:	Store at -20°C as received.
Stability:	Stable for 12 months from date of receipt.
Predicted Protein Size:	83.8 kDa
Gene Name:	SRY-box transcription factor 5
Database Link:	<a href="#">NP_008871</a> <a href="#">Entrez Gene 20678 Mouse</a> <a href="#">Entrez Gene 140587 Rat</a> <a href="#">Entrez Gene 6660 Human</a> <a href="#">P35711</a>



[View online »](#)

**Background:**

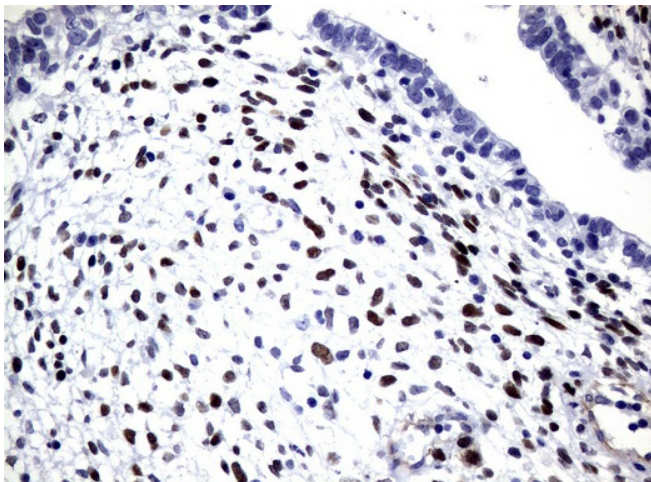
This gene encodes a member of the SOX (SRY-related HMG-box) family of transcription factors involved in the regulation of embryonic development and in the determination of the cell fate. The encoded protein may act as a transcriptional regulator after forming a protein complex with other proteins. The encoded protein may play a role in chondrogenesis. A pseudogene of this gene is located on chromosome 8. Multiple transcript variants encoding distinct isoforms have been identified for this gene. [provided by RefSeq, Jul 2008]

**Synonyms:**

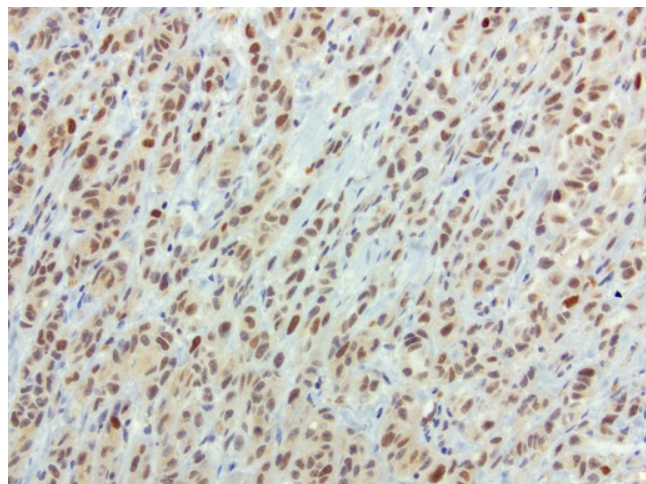
L-SOX5; L-SOX5B; L-SOX5F; LAMSHF

**Protein Families:**

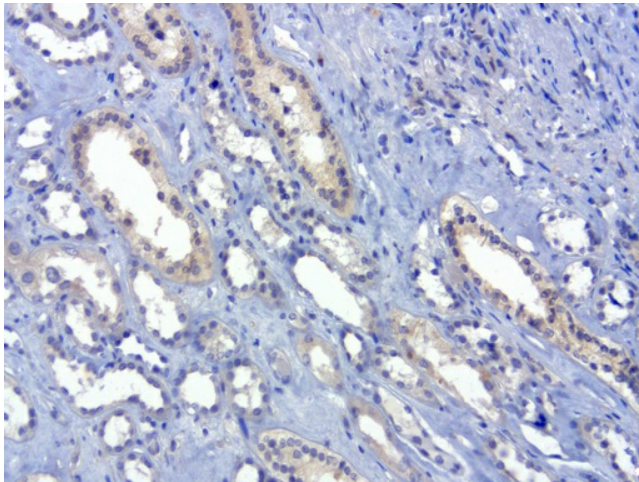
Transcription Factors

**Product images:**

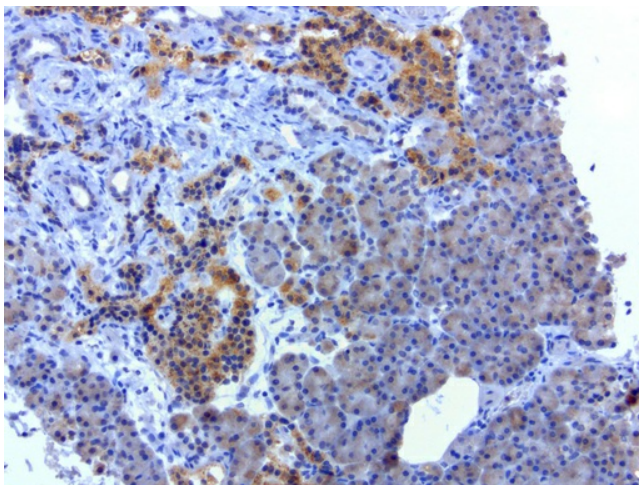
Immunohistochemical staining of paraffin-embedded Human testicular cancer tissue using anti-SOX5 mouse monoclonal antibody. ([UM500047]; heat-induced epitope retrieval by 10mM citric buffer, pH6.0, 120°C for 3min)



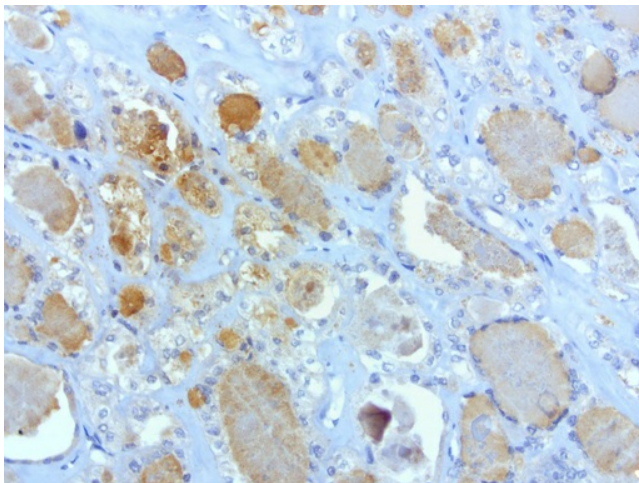
Immunohistochemical staining of paraffin-embedded human melanoma using anti-SOX5 clone UMAB53 mouse monoclonal antibody ([UM500047]) at 1:100 with Polink2 Broad HRP DAB detection kit; heat-induced epitope retrieval with GBI Accel pH 8.7 HIER buffer using pressure chamber for 3 minutes at 110C. Strong nuclear and weak cytoplasmic staining is seen in the tumor cells.



Immunohistochemical staining of paraffin-embedded human kidney using anti-SOX5 clone UMAB53 mouse monoclonal antibody ([UM500047]) at 1:100 with Polink2 Broad HRP DAB detection kit; heat-induced epitope retrieval with GBI Accel pH 8.7 HIER buffer using pressure chamber for 3 minutes at 110C. Weak cytoplasmic staining is seen in the tubule epithelial cells of the kidney.

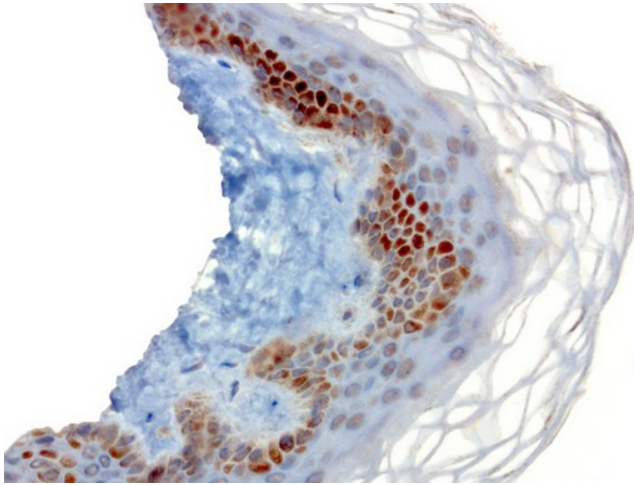


Immunohistochemical staining of paraffin-embedded human pancreatic cancer using anti-SOX5 clone UMAB53 mouse monoclonal antibody ([UM500047]) at 1:100 with Polink2 Broad HRP DAB detection kit; heat-induced epitope retrieval with GBI Accel pH 8.7 HIER buffer using pressure chamber for 3 minutes at 110C. Strong cytoplasmic staining is seen in the tumor cells.

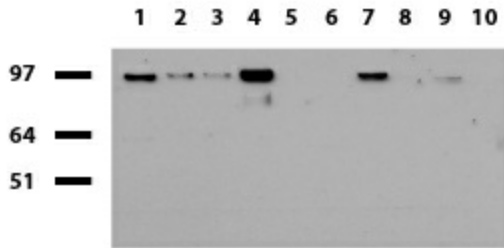


Immunohistochemical staining of paraffin-embedded human thyroid cancer using anti-SOX5 clone UMAB53 mouse monoclonal antibody ([UM500047]) at 1:100 with Polink2 Broad HRP DAB detection kit; heat-induced epitope retrieval with GBI Accel pH 8.7 HIER buffer using pressure chamber for 3 minutes at 110C. Cytoplasmic staining is seen in the tumor cells.

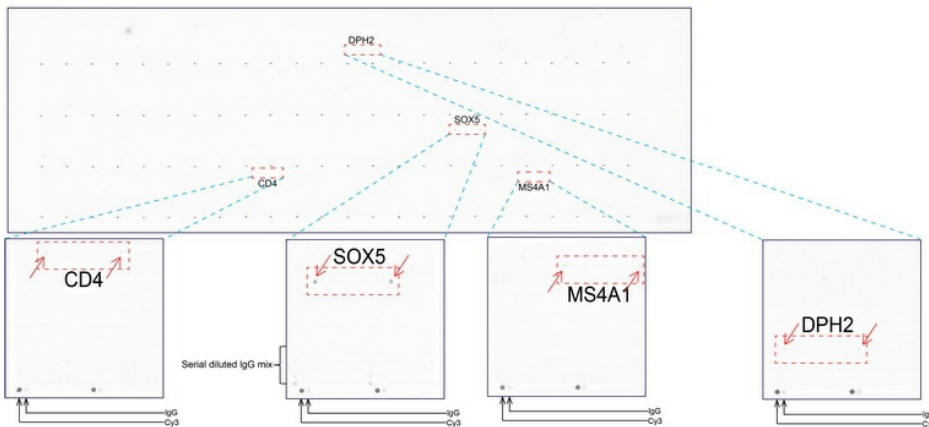




Immunohistochemical staining of paraffin-embedded human skin using anti-SOX5 clone UMAB53 mouse monoclonal antibody ([UM500047]) at 1:100 with Polink2 Broad HRP DAB detection kit; heat-induced epitope retrieval with GBI Accel pH 8.7 HIER buffer using pressure chamber for 3 minutes at 110C. Strong nuclear and cytoplasmic staining is seen in the epidermal cells.



Western blot of human tissue lysates (15ug) from 10 different tissues (1: Testis, 2: Omentum, 3: Uterus, 4: Breast, 5: Brain, 6: Thyroid, 7: Colon, 8: Spleen 9: Liver, 10: Ovary). Dilution: 1:500.



OriGene overexpression protein microarray chip was immunostained with UltraMAB anti-SOX5 mouse monoclonal antibody ([UM500047]). The positive reactive proteins are highlighted with two red arrows in the enlarged subarray. All the positive controls spotted in this subarray are also labeled for clarification.