

Product datasheet for **UM500047**

SOX5 Mouse Monoclonal Antibody [Clone ID: UMAB53]

Product data:

Product Type:	Primary Antibodies
Clone Name:	UMAB53
Applications:	10k-ChIP, IHC, WB
Recommended Dilution:	IHC 1:100
Reactivity:	Human, Mouse, Rat
Host:	Mouse
Isotype:	IgG3
Clonality:	Monoclonal
Immunogen:	Full length human recombinant protein of human SOX5(NP_008871) produced in HEK293T cell.
Formulation:	PBS (pH 7.3) containing 1% BSA, 50% glycerol and 0.02% sodium azide.
Concentration:	0.5~1.0 mg/ml (Lot Dependent)
Purification:	Purified from mouse ascites fluids or tissue culture supernatant by affinity chromatography (protein A/G)
Conjugation:	Unconjugated
Storage:	Store at -20°C as received.
Stability:	Stable for 12 months from date of receipt.
Predicted Protein Size:	83.8 kDa
Gene Name:	SRY-box transcription factor 5
Database Link:	NP_008871 Entrez Gene 20678 Mouse Entrez Gene 140587 Rat Entrez Gene 6660 Human P35711
Background:	This gene encodes a member of the SOX (SRY-related HMG-box) family of transcription factors involved in the regulation of embryonic development and in the determination of the cell fate. The encoded protein may act as a transcriptional regulator after forming a protein complex with other proteins. The encoded protein may play a role in chondrogenesis. A pseudogene of this gene is located on chromosome 8. Multiple transcript variants encoding distinct isoforms have been identified for this gene. [provided by RefSeq, Jul 2008]

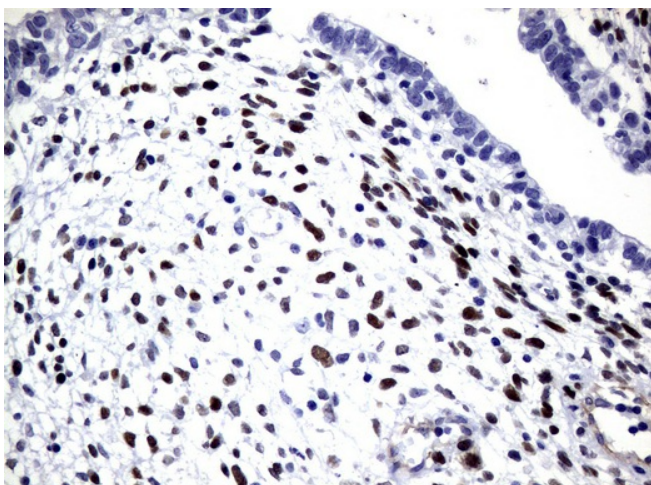


[View online »](#)

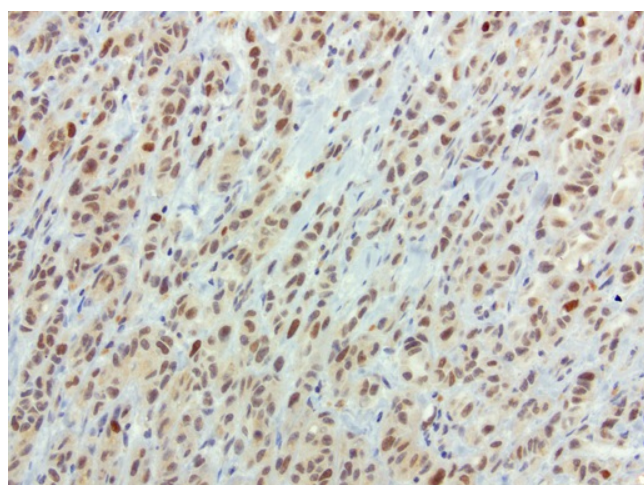
Synonyms: L-SOX5; L-SOX5B; L-SOX5F; LAMSHF

Protein Families: Transcription Factors

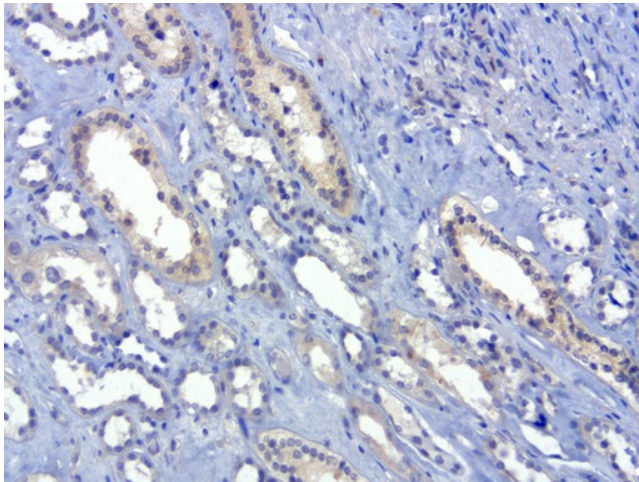
Product images:



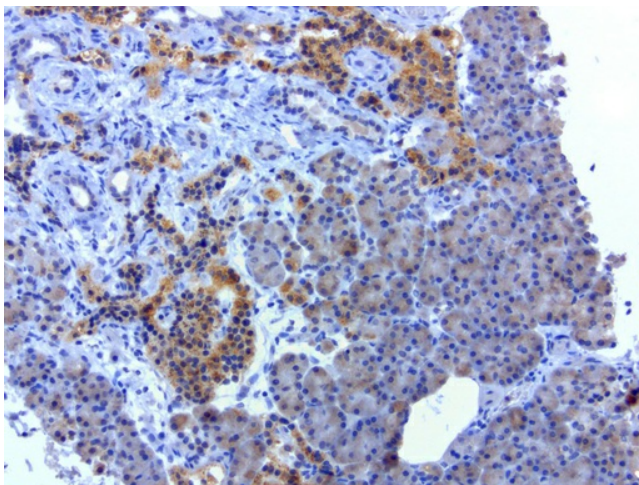
Immunohistochemical staining of paraffin-embedded Human testicular cancer tissue using anti-SOX5 mouse monoclonal antibody (UM500047; heat-induced epitope retrieval by 10mM citric buffer, pH6.0, 120°C for 3min)



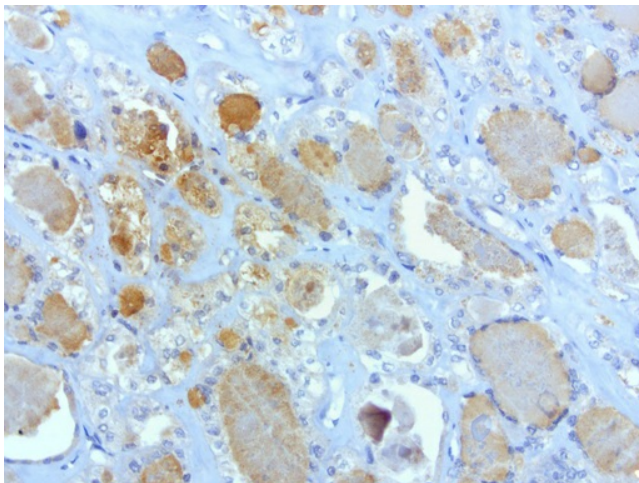
Immunohistochemical staining of paraffin-embedded human melanoma using anti-SOX5 clone UMAB53 mouse monoclonal antibody (UM500047) at 1:100 with Polink2 Broad HRP DAB detection kit; heat-induced epitope retrieval with GBI Accel pH 8.7 HIER buffer using pressure chamber for 3 minutes at 110C. Strong nuclear and weak cytoplasmic staining is seen in the tumor cells.



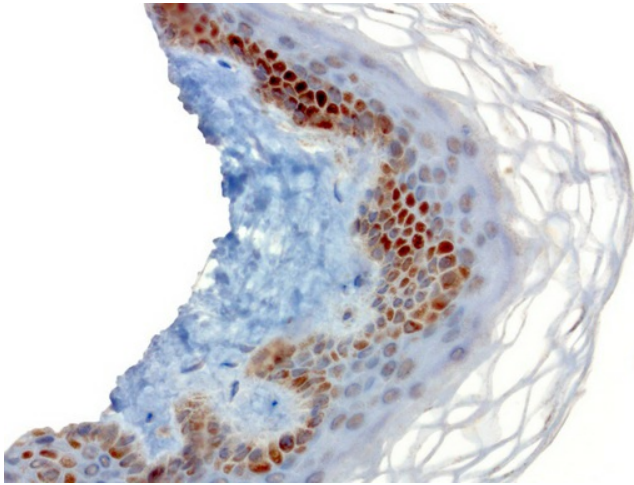
Immunohistochemical staining of paraffin-embedded human kidney using anti-SOX5 clone UMAB53 mouse monoclonal antibody (UM500047) at 1:100 with Polink2 Broad HRP DAB detection kit; heat-induced epitope retrieval with GBI Accel pH 8.7 HIER buffer using pressure chamber for 3 minutes at 110C. Weak cytoplasmic staining is seen in the tubule epithelial cells of the kidney.



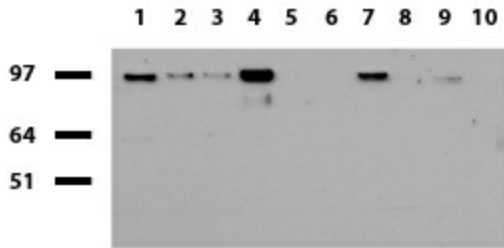
Immunohistochemical staining of paraffin-embedded human pancreatic cancer using anti-SOX5 clone UMAB53 mouse monoclonal antibody (UM500047) at 1:100 with Polink2 Broad HRP DAB detection kit; heat-induced epitope retrieval with GBI Accel pH 8.7 HIER buffer using pressure chamber for 3 minutes at 110C. Strong cytoplasmic staining is seen in the tumor cells.



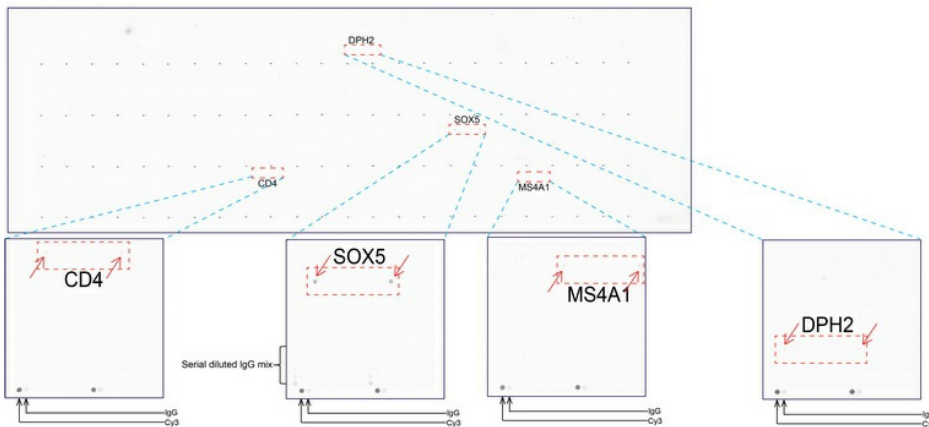
Immunohistochemical staining of paraffin-embedded human thyroid cancer using anti-SOX5 clone UMAB53 mouse monoclonal antibody (UM500047) at 1:100 with Polink2 Broad HRP DAB detection kit; heat-induced epitope retrieval with GBI Accel pH 8.7 HIER buffer using pressure chamber for 3 minutes at 110C. Cytoplasmic staining is seen in the tumor cells.



Immunohistochemical staining of paraffin-embedded human skin using anti-SOX5 clone UMAB53 mouse monoclonal antibody (UM500047) at 1:100 with Polink2 Broad HRP DAB detection kit; heat-induced epitope retrieval with GBI Accel pH 8.7 HIER buffer using pressure chamber for 3 minutes at 110C. Strong nuclear and cytoplasmic staining is seen in the epidermal cells.



Western blot of human tissue lysates (15ug) from 10 different tissues (1: Testis, 2: Omentum, 3: Uterus, 4: Breast, 5: Brain, 6: Thyroid, 7: Colon, 8: Spleen 9: Liver, 10: Ovary). Dilution: 1:500.



OriGene overexpression protein microarray chip was immunostained with UltraMAB anti-SOX5 mouse monoclonal antibody (UM500047). The positive reactive proteins are highlighted with two red arrows in the enlarged subarray. All the positive controls spotted in this subarray are also labeled for clarification.