

## Product datasheet for **UM500046CF**

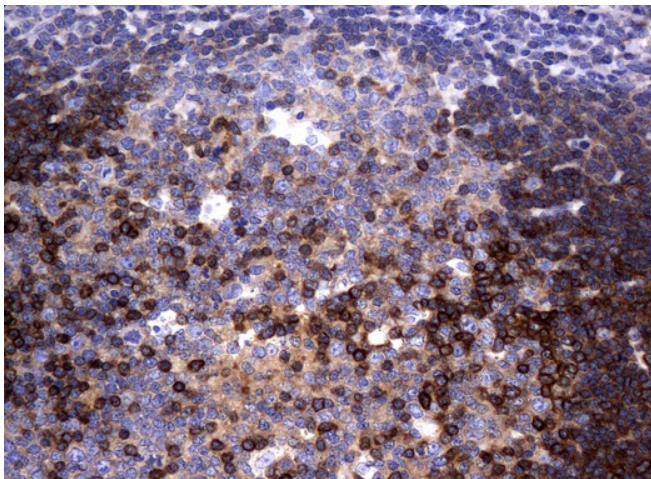
### DEF6 Mouse Monoclonal Antibody [Clone ID: UMAB51]

#### Product data:

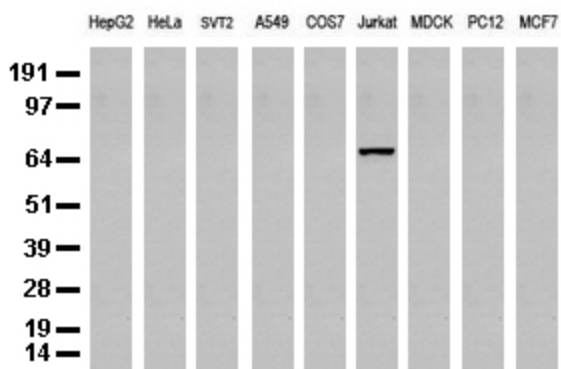
|                         |   |
|-------------------------|---|
| Product Type:           | Primary Antibodies  |
| Clone Name:             | UMAB51  |
| Applications:           | 10k-ChIP, IHC, WB   |
| Recommend Dilution:     | WB 1:500, IHC 1:100   |
| Reactivity:             | Human   |
| Host:                   | Mouse   |
| Isotype:                | IgG1  |
| Clonality:              | Monoclonal  |
| Immunogen:              | Full length human recombinant protein of human DEF6(NP_071330) produced in HEK293T cell.  |
| Formulation:            | PBS (pH7.3), 8% Trehalose   |
| Reconstitution Method:  | Reconstitute with PBS (pH7.3). To use this carrier-free antibody for conjugation experiment, we strongly recommend you to perform another round of desalting process. (OriGene recommends Zeba Spin Desalting Columns, 7KMWCO from Thermo Scientific) |
| Purification:           | Purified from cell culture supernatant by affinity chromatography   |
| Predicted Protein Size: | 73.7 kDa  |
| Gene Name:              | Homo sapiens DEF6 guanine nucleotide exchange factor (DEF6), mRNA.  |
| Database Link:          | <a href="#">NP_071330 Entrez Gene 50619 Human</a>   |
| Background:             | DEF6, or IBP, is a guanine nucleotide exchange factor (GEF) for RAC (MIM 602048) and CDC42 (MIM 116952) that is highly expressed in B and T cells (Gupta et al., 2003 [PubMed 12923183]). [supplied by OMIM, Mar 2008]                                |
| Synonyms:               | IBP; SLAT; SWAP70L  |
| Protein Families:       | Druggable Genome  |



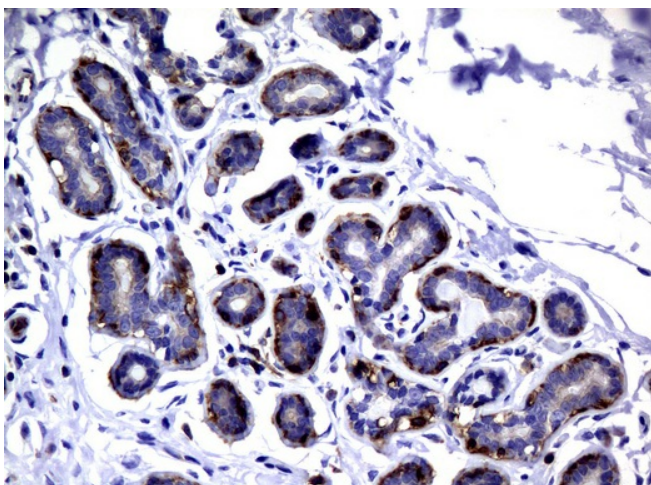
[View online »](#)

**Product images:**

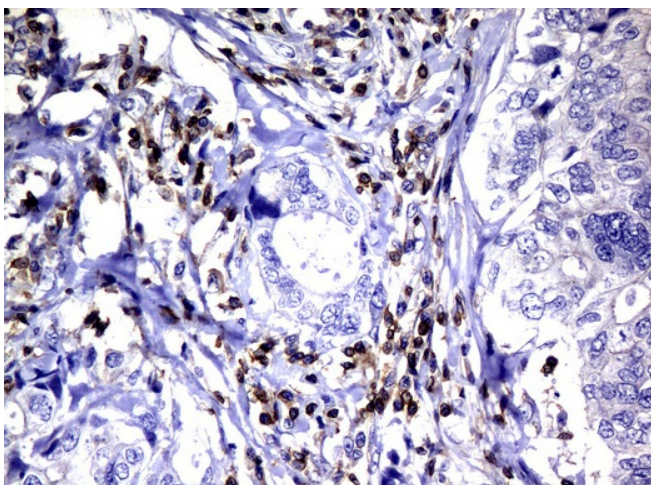
Immunohistochemical staining of paraffin-embedded Human tonsil using anti-DEF6 mouse monoclonal antibody. (UM500046; heat-induced epitope retrieval by 10mM citric buffer, pH6.0, 120°C for 3min)



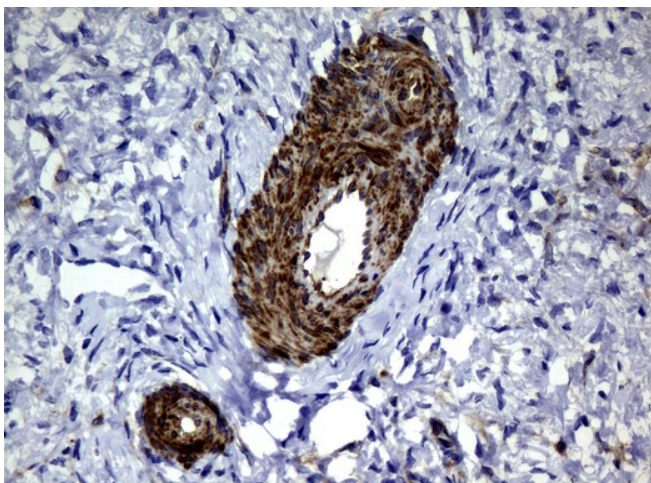
Western blot analysis of extracts (35ug) from 9 different cell lines by using anti-DEF6 monoclonal antibody (Clone UMAB51).



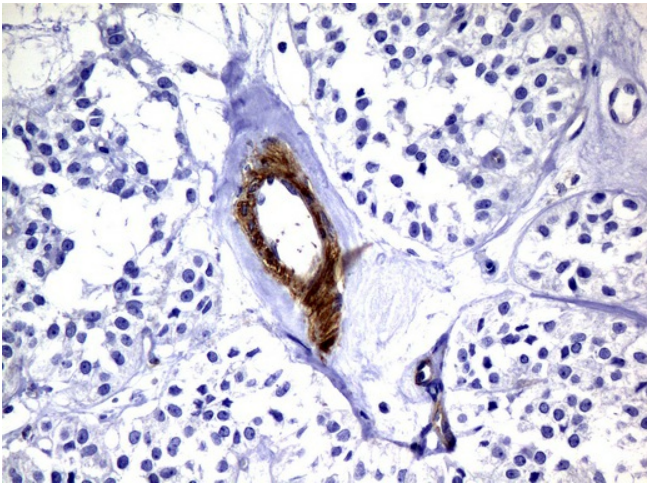
Immunohistochemical staining of paraffin-embedded Human breast tissue using anti-DEF6 mouse monoclonal antibody. (UM500046; heat-induced epitope retrieval by 10mM citric buffer, pH6.0, 120°C for 3min)



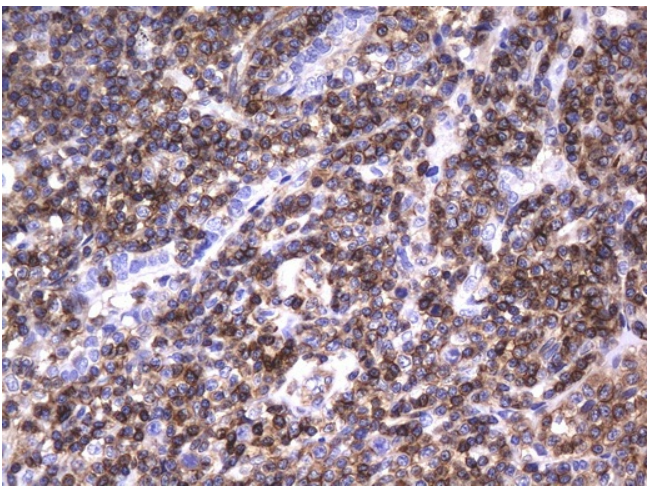
Immunohistochemical staining of paraffin-embedded Adenocarcinoma of Human breast tissue using anti-DEF6 mouse monoclonal antibody. (UM500046; heat-induced epitope retrieval by 10mM citric buffer, pH6.0, 120°C for 3min)



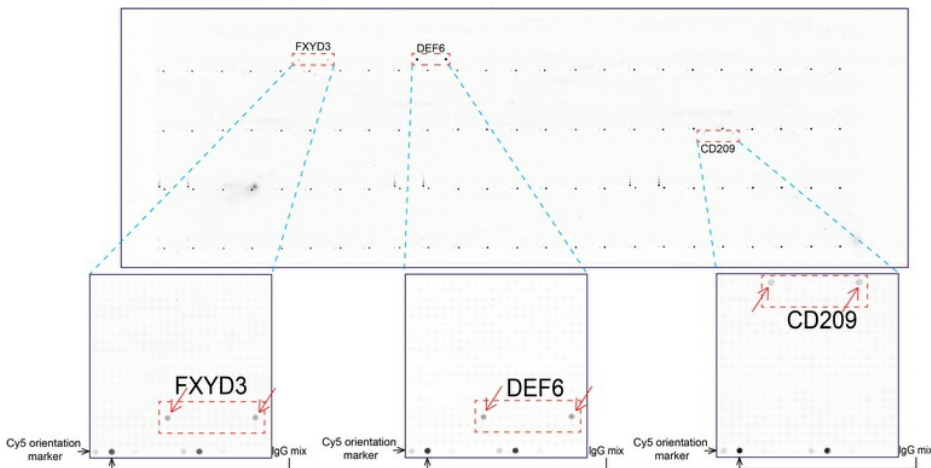
Immunohistochemical staining of paraffin-embedded Human Ovary tissue using anti-DEF6 mouse monoclonal antibody. (UM500046; heat-induced epitope retrieval by 10mM citric buffer, pH6.0, 120°C for 3min)



Immunohistochemical staining of paraffin-embedded Carcinoma of Human pancreas tissue using anti-DEF6 mouse monoclonal antibody. (UM500046; heat-induced epitope retrieval by 10mM citric buffer, pH6.0, 120°C for 3min)



Immunohistochemical staining of paraffin-embedded Human lymphoma tissue using anti-DEF6 mouse monoclonal antibody. (UM500046; heat-induced epitope retrieval by 10mM citric buffer, pH6.0, 120°C for 3min)



OriGene overexpression protein microarray chip was immunostained with UltraMAB anti-DEF6 mouse monoclonal antibody (UM500046). The positive reactive proteins are highlighted with two red arrows in the enlarged subarray. All the positive controls spotted in this subarray are also labeled for clarification.