

Product datasheet for **UM500046**

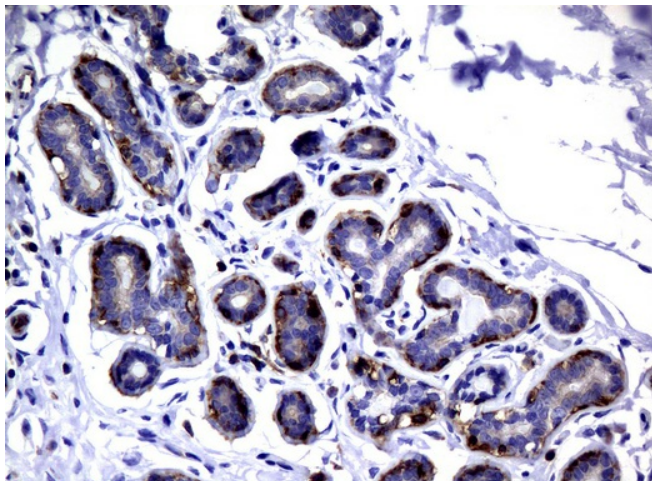
DEF6 Mouse Monoclonal Antibody [Clone ID: UMAB51]

Product data:

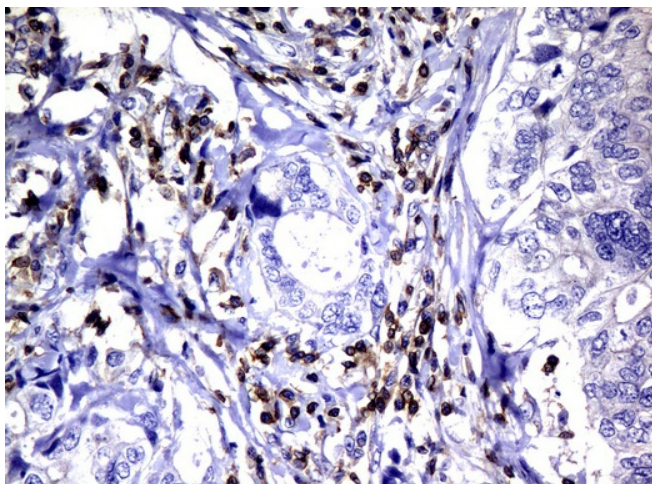
Product Type:	Primary Antibodies
Clone Name:	UMAB51
Applications:	10k-ChIP, IHC, WB
Recommended Dilution:	WB 1:500, IHC 1:100
Reactivity:	Human, Mouse, Rat
Host:	Mouse
Isotype:	IgG1
Clonality:	Monoclonal
Immunogen:	Full length human recombinant protein of human DEF6(NP_071330) produced in HEK293T cell.
Formulation:	PBS (pH 7.3) containing 1% BSA, 50% glycerol and 0.02% sodium azide.
Concentration:	0.5~1.0 mg/ml (Lot Dependent)
Purification:	Purified from mouse ascites fluids or tissue culture supernatant by affinity chromatography (protein A/G)
Conjugation:	Unconjugated
Storage:	Store at -20°C as received.
Stability:	Stable for 12 months from date of receipt.
Predicted Protein Size:	73.7 kDa
Gene Name:	DEF6 guanine nucleotide exchange factor
Database Link:	NP_071330 Entrez Gene 23853 Mouse Entrez Gene 309642 Rat Entrez Gene 50619 Human Q9H4E7
Background:	DEF6, or IBP, is a guanine nucleotide exchange factor (GEF) for RAC (MIM 602048) and CDC42 (MIM 116952) that is highly expressed in B and T cells (Gupta et al., 2003 [PubMed 12923183]). [supplied by OMIM, Mar 2008]
Synonyms:	IBP; SLAT; SWAP70L
Protein Families:	Druggable Genome



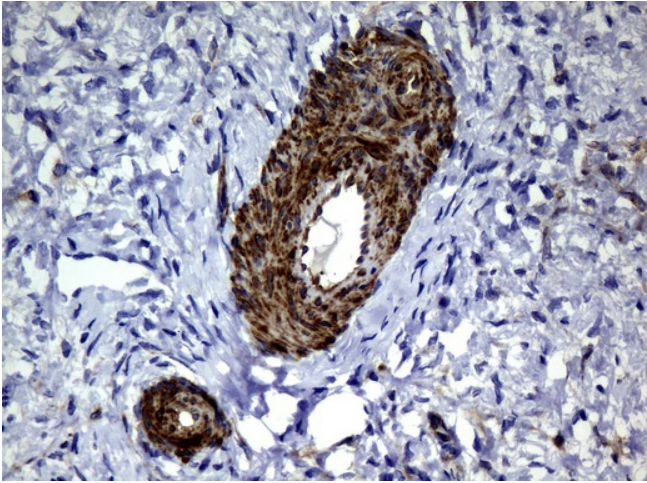
[View online »](#)

Product images:

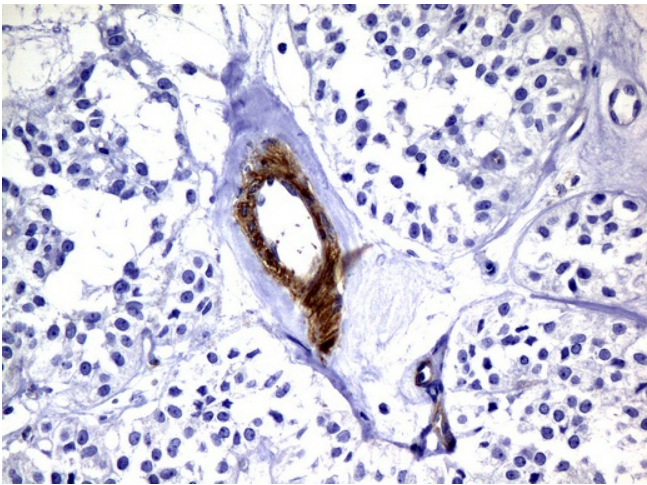
Immunohistochemical staining of paraffin-embedded Human breast tissue using anti-DEF6 mouse monoclonal antibody. (UM500046; heat-induced epitope retrieval by 10mM citric buffer, pH6.0, 120°C for 3min)



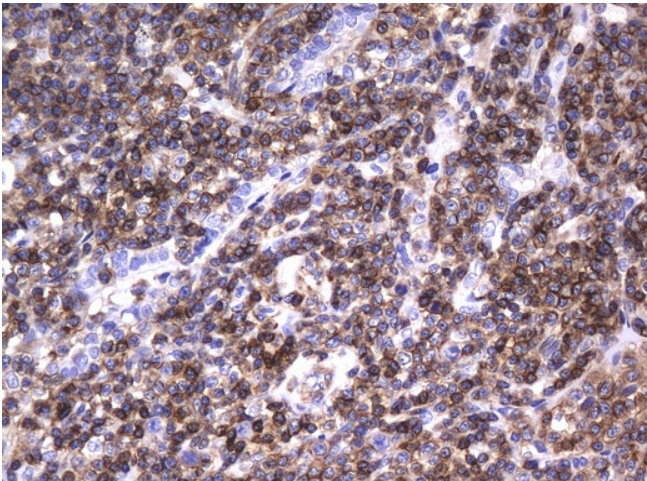
Immunohistochemical staining of paraffin-embedded Adenocarcinoma of Human breast tissue using anti-DEF6 mouse monoclonal antibody. (UM500046; heat-induced epitope retrieval by 10mM citric buffer, pH6.0, 120°C for 3min)



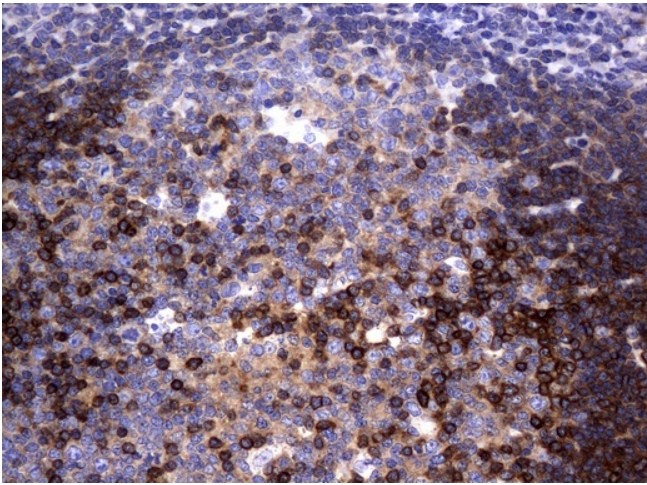
Immunohistochemical staining of paraffin-embedded Human Ovary tissue using anti-DEF6 mouse monoclonal antibody. (UM500046; heat-induced epitope retrieval by 10mM citric buffer, pH6.0, 120°C for 3min)



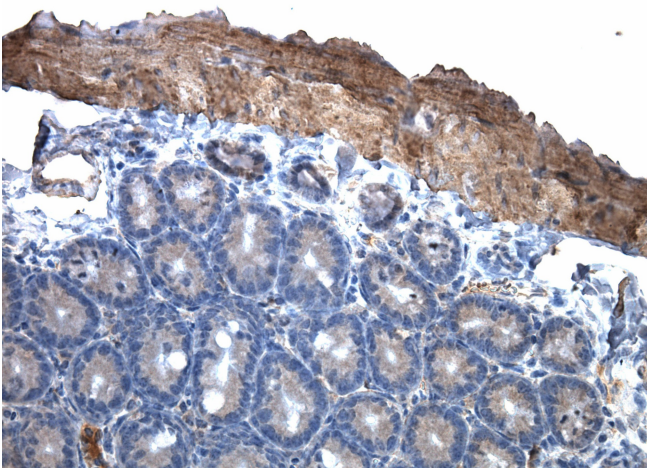
Immunohistochemical staining of paraffin-embedded Carcinoma of Human pancreas tissue using anti-DEF6 mouse monoclonal antibody. (UM500046; heat-induced epitope retrieval by 10mM citric buffer, pH6.0, 120°C for 3min)



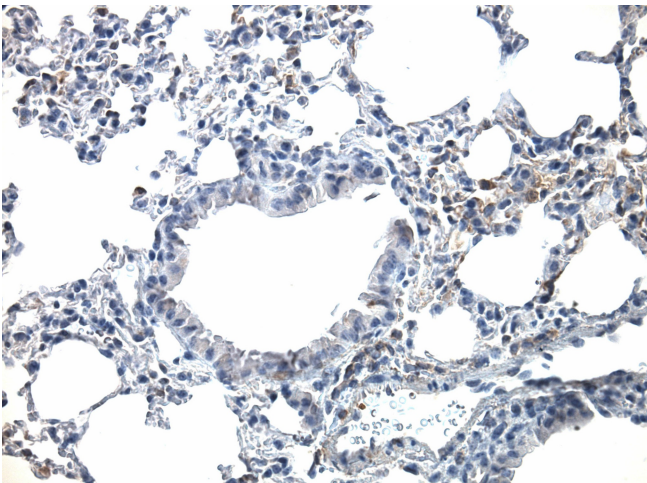
Immunohistochemical staining of paraffin-embedded Human lymphoma tissue using anti-DEF6 mouse monoclonal antibody. (UM500046; heat-induced epitope retrieval by 10mM citric buffer, pH6.0, 120°C for 3min)



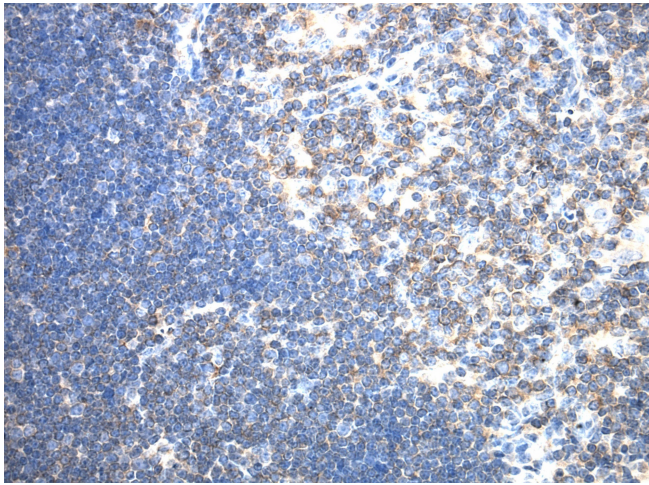
Immunohistochemical staining of paraffin-embedded Human tonsil using anti-DEF6 mouse monoclonal antibody. (UM500046; heat-induced epitope retrieval by 10mM citric buffer, pH6.0, 120°C for 3min)



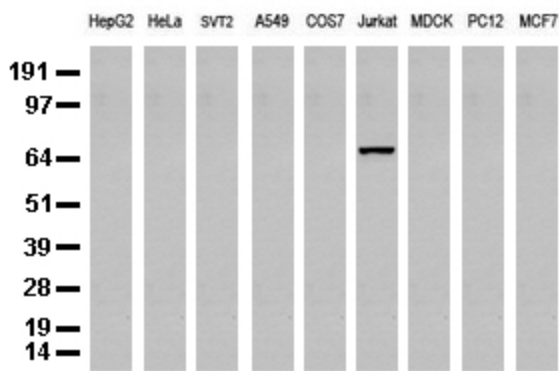
Immunohistochemical staining of paraffin-embedded mouse small intestine tissue using anti-DEF6 clone UMAB51 mouse monoclonal antibody. HIER TEE buffer pH9 ([B21-100]) at 110C for 10 min, UM500046 (1:100). Detection was done with Klear Mouse (C/N [D52-18]) DAB Kit.



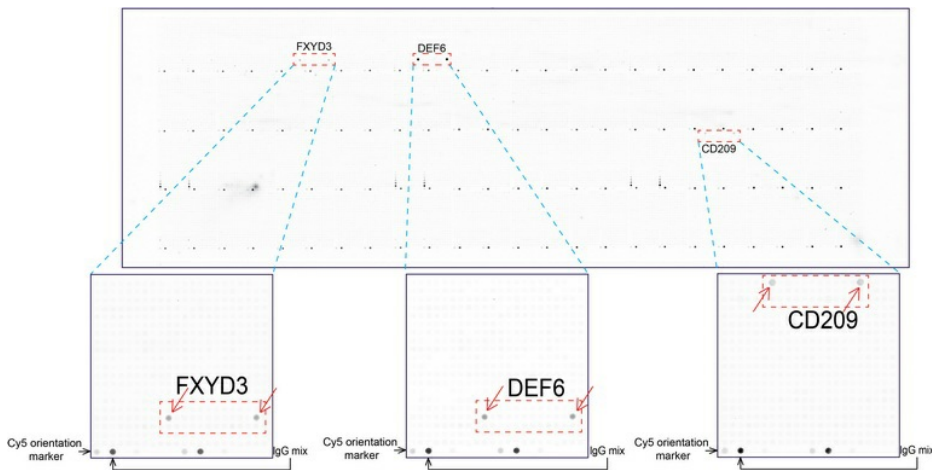
Immunohistochemical staining of paraffin-embedded mouse lung tissue using anti-DEF6 clone UMAB51 mouse monoclonal antibody. HIER TEE buffer pH9 ([B21-100]) at 110C for 10 min, UM500046 (1:100). Detection was done with Klear Mouse (C/N [D52-18]) DAB Kit.



Immunohistochemical staining of paraffin-embedded mouse spleen tissue using anti-DEF6 clone UMAB51 mouse monoclonal antibody. HIER TEE buffer pH9 ([B21-100]) at 110C for 10 min, UM500046 (1:100). Detection was done with Klear Mouse (C/N [D52-18]) DAB Kit.



Western blot analysis of extracts (35ug) from 9 different cell lines by using anti-DEF6 monoclonal antibody (Clone UMAB51).



OriGene overexpression protein microarray chip was immunostained with UltraMAB anti-DEF6 mouse monoclonal antibody (UM500046). The positive reactive proteins are highlighted with two red arrows in the enlarged subarray. All the positive controls spotted in this subarray are also labeled for clarification.