

Product datasheet for **UM500045**

Cytokeratin 18 (KRT18) Mouse Monoclonal Antibody [Clone ID: UMAB50]

Product data:

Product Type:	Primary Antibodies
Clone Name:	UMAB50
Applications:	IF, IHC, WB
Recommended Dilution:	IHC 1:100, IF 1:100
Reactivity:	Human, Monkey, Mouse, Rat
Host:	Mouse
Isotype:	IgG1
Clonality:	Monoclonal
Immunogen:	Human recombinant protein fragment corresponding to amino acids 69-372 of human KRT18 (NP_000215) produced in E.coli.
Formulation:	PBS (pH 7.3) containing 1% BSA, 50% glycerol and 0.02% sodium azide.
Concentration:	0.5~1.0 mg/ml (Lot Dependent)
Purification:	Purified from mouse ascites fluids or tissue culture supernatant by affinity chromatography (protein A/G)
Conjugation:	Unconjugated
Storage:	Store at -20°C as received.
Stability:	Stable for 12 months from date of receipt.
Predicted Protein Size:	47.9 kDa
Gene Name:	keratin 18
Database Link:	NP_954657 Entrez Gene 16668 MouseEntrez Gene 294853 RatEntrez Gene 3875 Human P05783
Background:	KRT18 encodes the type I intermediate filament chain keratin 18. Keratin 18, together with its filament partner keratin 8, are perhaps the most commonly found members of the intermediate filament gene family. They are expressed in single layer epithelial tissues of the body. Mutations in this gene have been linked to cryptogenic cirrhosis. Two transcript variants encoding the same protein have been found for this gene. [provided by RefSeq, Jul

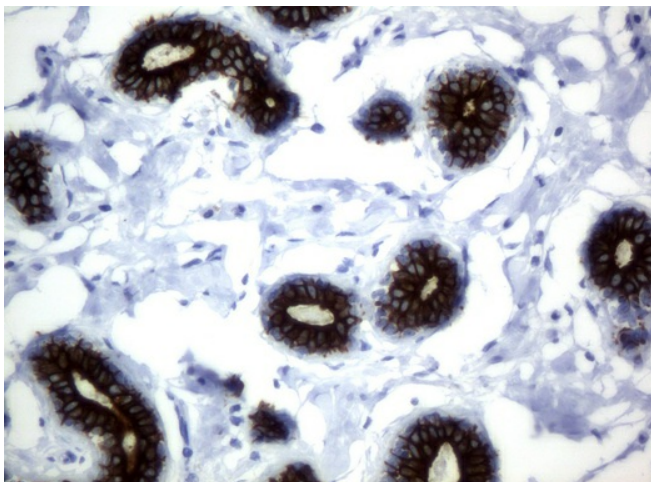


[View online »](#)

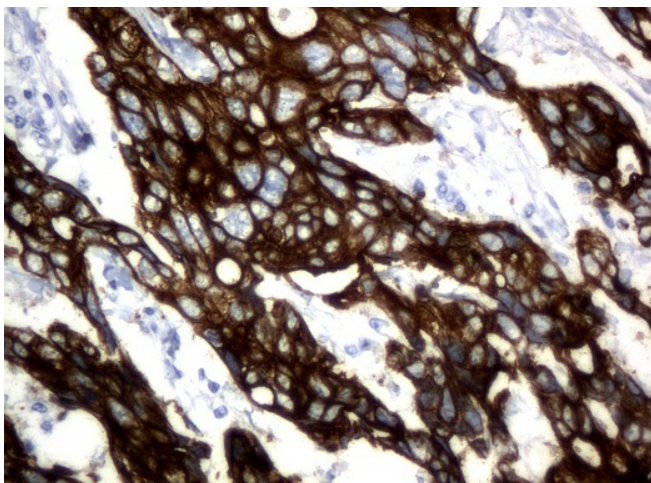
Synonyms: CK-18; CYK18; K18

Protein Pathways: Pathogenic Escherichia coli infection

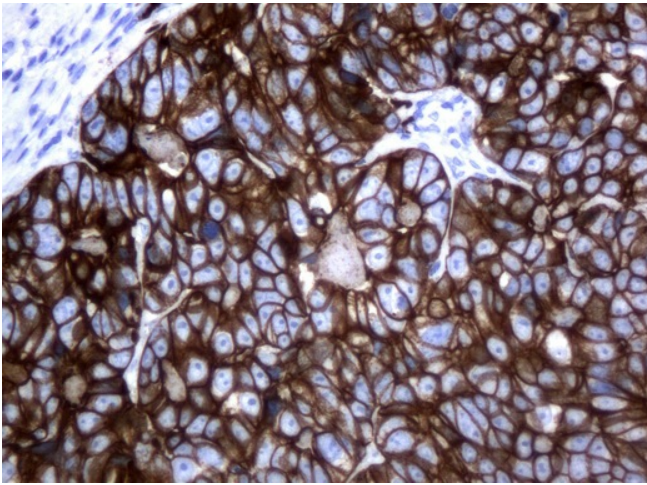
Product images:



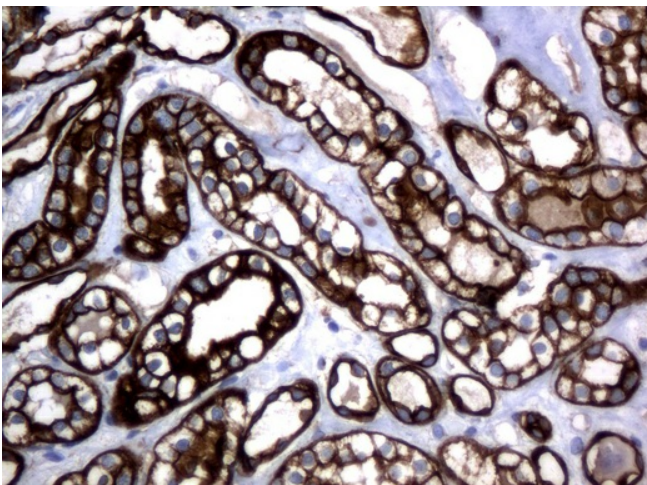
Immunohistochemical staining of paraffin-embedded human breast using anti-KRT18 mouse monoclonal antibody. (UM500045; heat-induced epitope retrieval by 10mM citric buffer, pH6.0, 120°C for 3min)



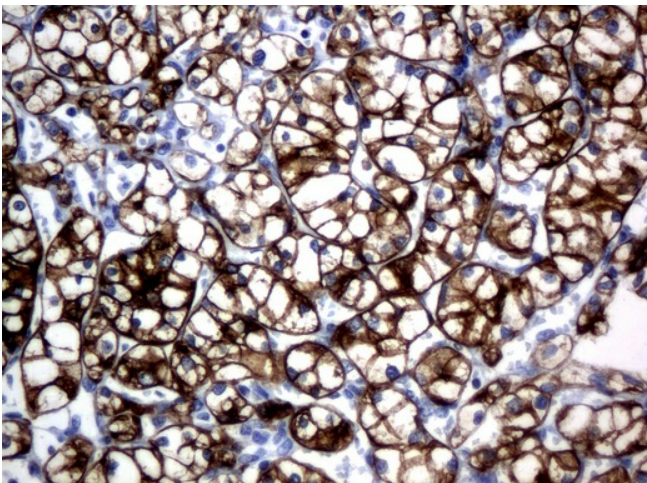
Immunohistochemical staining of paraffin-embedded adenocarcinoma of human breast using anti-KRT18 mouse monoclonal antibody. (UM500045; heat-induced epitope retrieval by 10mM citric buffer, pH6.0, 120°C for 3min)



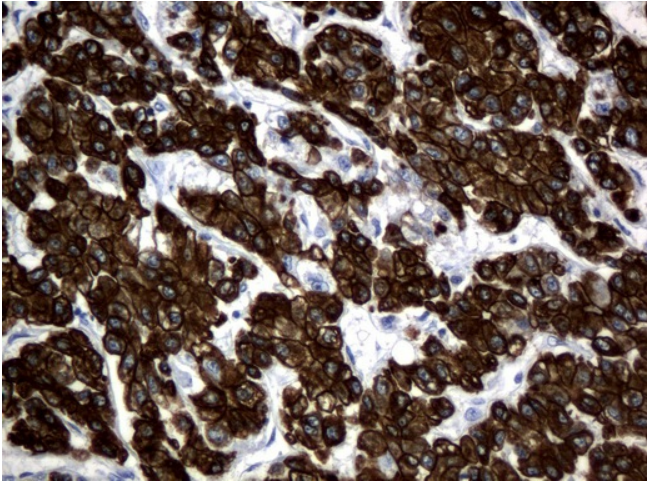
Immunohistochemical staining of paraffin-embedded adenocarcinoma of human colon using anti-KRT18 mouse monoclonal antibody. (UM500045; heat-induced epitope retrieval by 10mM citric buffer, pH6.0, 120°C for 3min)



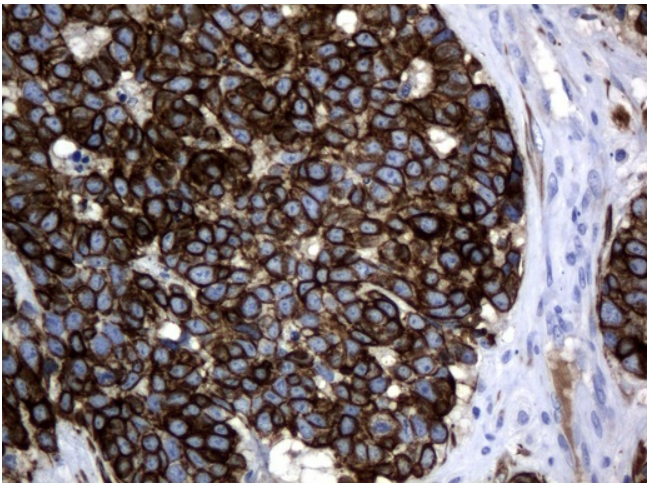
Immunohistochemical staining of paraffin-embedded human kidney using anti-KRT18 mouse monoclonal antibody. (UM500045; heat-induced epitope retrieval by 10mM citric buffer, pH6.0, 120°C for 3min)



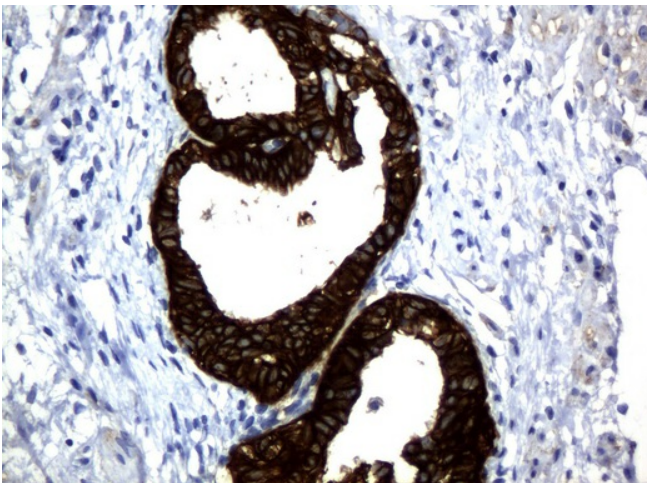
Immunohistochemical staining of paraffin-embedded carcinoma of human kidney using anti-KRT18 mouse monoclonal antibody. (UM500045; heat-induced epitope retrieval by 10mM citric buffer, pH6.0, 120°C for 3min)



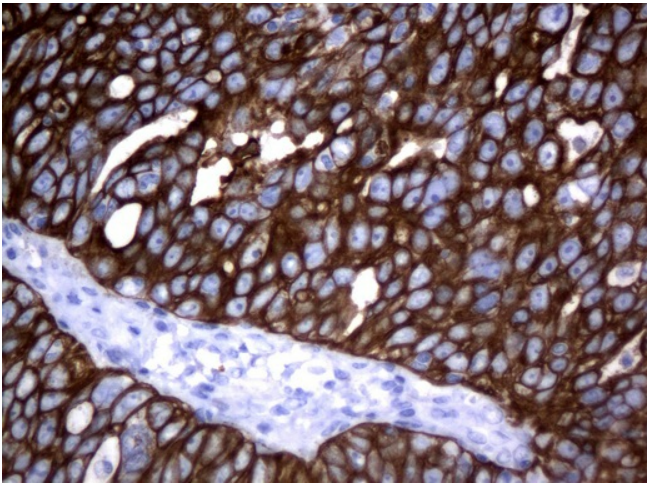
Immunohistochemical staining of paraffin-embedded carcinoma of human liver using anti-KRT18 mouse monoclonal antibody. (UM500045; heat-induced epitope retrieval by 10mM citric buffer, pH6.0, 120°C for 3min)



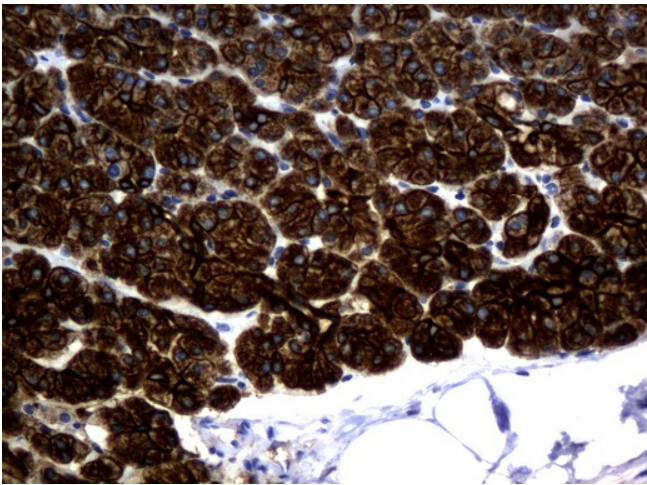
Immunohistochemical staining of paraffin-embedded carcinoma of human lung using anti-KRT18 mouse monoclonal antibody. (UM500045; heat-induced epitope retrieval by 10mM citric buffer, pH6.0, 120°C for 3min)



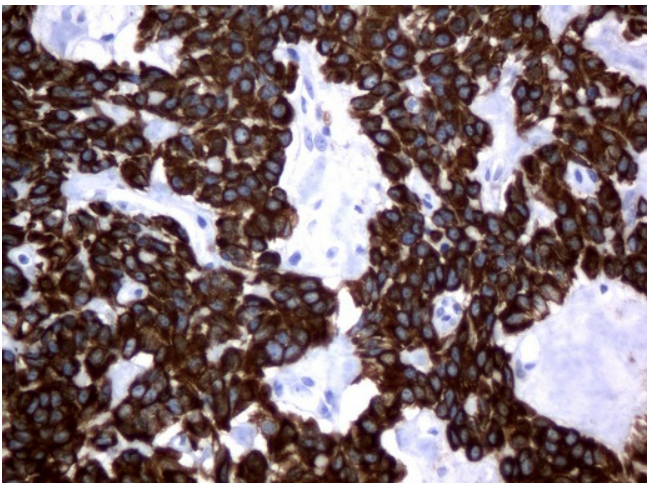
Immunohistochemical staining of paraffin-embedded human ovary using anti-KRT18 mouse monoclonal antibody. (UM500045; heat-induced epitope retrieval by 10mM citric buffer, pH6.0, 120°C for 3min)



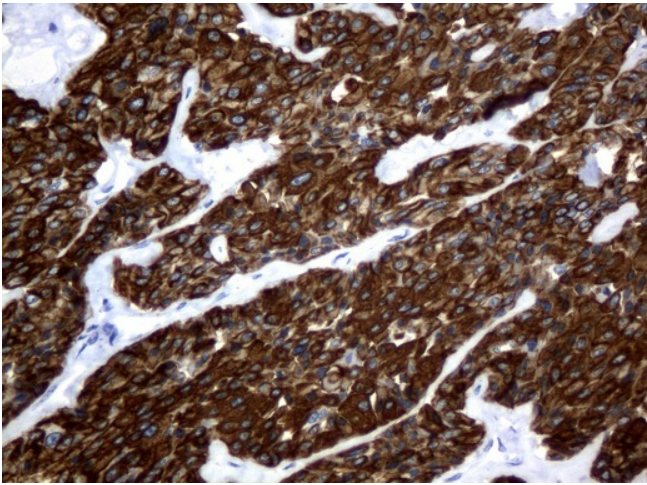
Immunohistochemical staining of paraffin-embedded adenocarcinoma of human ovary using anti-KRT18 mouse monoclonal antibody. (UM500045; heat-induced epitope retrieval by 10mM citric buffer, pH6.0, 120°C for 3min)



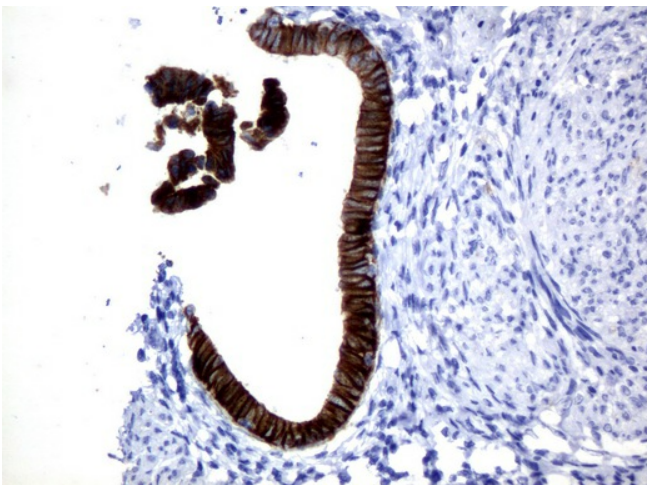
Immunohistochemical staining of paraffin-embedded human pancreas using anti-KRT18 mouse monoclonal antibody. (UM500045; heat-induced epitope retrieval by 10mM citric buffer, pH6.0, 120°C for 3min)



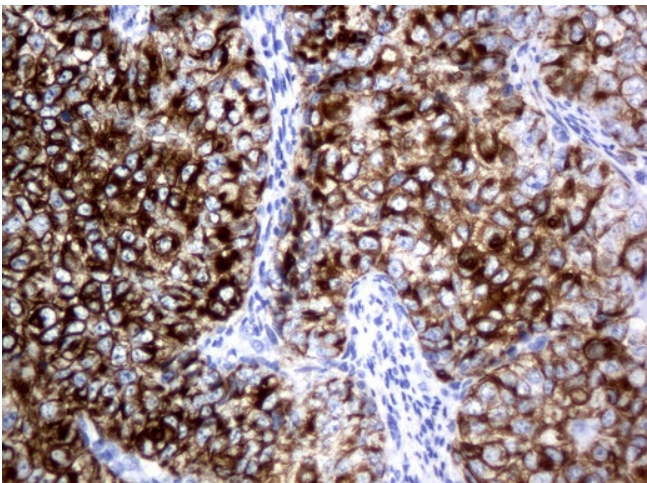
Immunohistochemical staining of paraffin-embedded carcinoma of human pancreas using anti-KRT18 mouse monoclonal antibody. (UM500045; heat-induced epitope retrieval by 10mM citric buffer, pH6.0, 120°C for 3min)



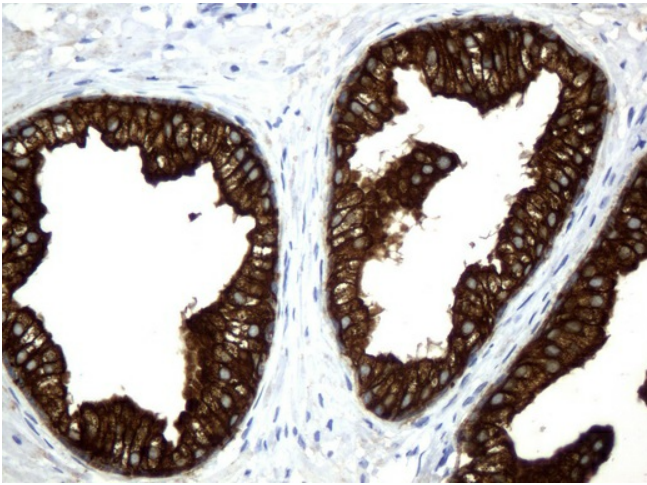
Immunohistochemical staining of paraffin-embedded carcinoma of human thyroid using anti-KRT18 mouse monoclonal antibody. (UM500045; heat-induced epitope retrieval by 10mM citric buffer, pH6.0, 120°C for 3min)



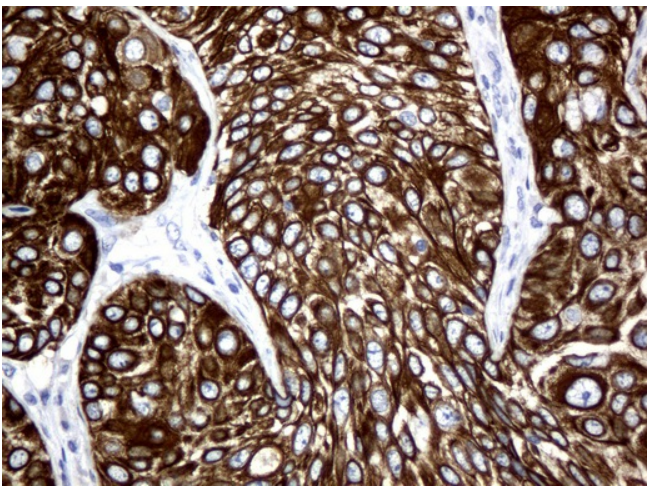
Immunohistochemical staining of paraffin-embedded human endometrium using anti-KRT18 mouse monoclonal antibody. (UM500045; heat-induced epitope retrieval by 10mM citric buffer, pH6.0, 120°C for 3min)



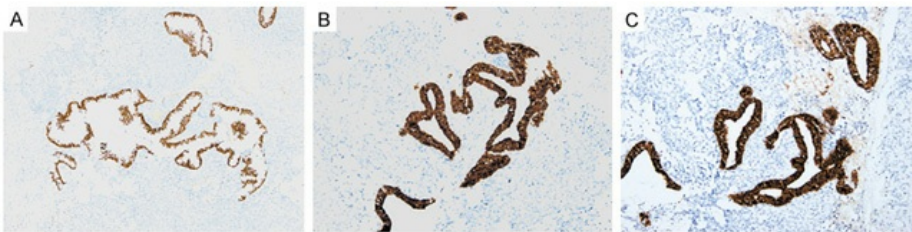
Immunohistochemical staining of paraffin-embedded adenocarcinoma of human endometrium using anti-KRT18 mouse monoclonal antibody. (UM500045; heat-induced epitope retrieval by 10mM citric buffer, pH6.0, 120°C for 3min)



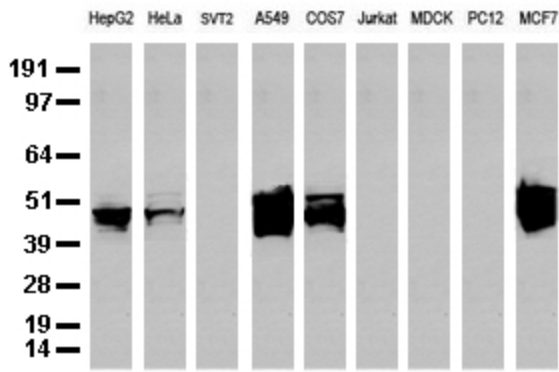
Immunohistochemical staining of paraffin-embedded human prostate using anti-KRT18 mouse monoclonal antibody. (UM500045; heat-induced epitope retrieval by 10mM citric buffer, pH6.0, 120°C for 3min)



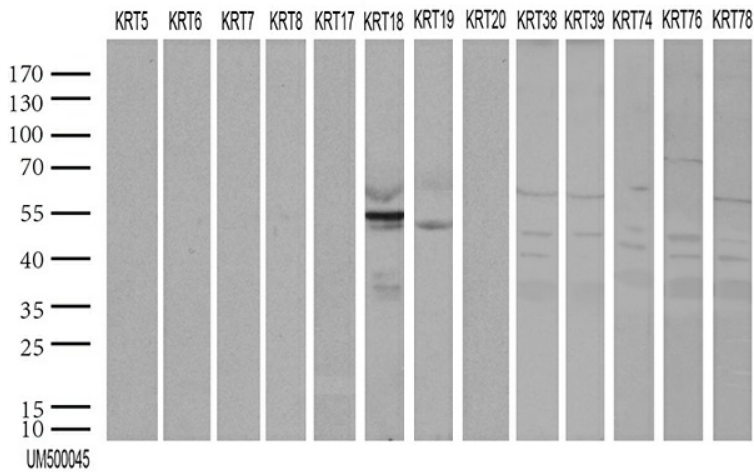
Immunohistochemical staining of paraffin-embedded carcinoma of human bladder using anti-KRT18 mouse monoclonal antibody. (UM500045; heat-induced epitope retrieval by 10mM citric buffer, pH6.0, 120°C for 3min)



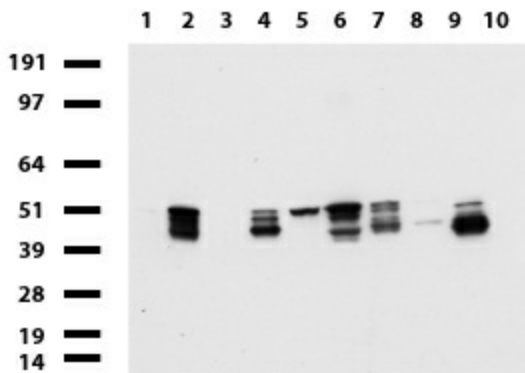
From citation: Immunohistochemistry of KRT18 (also known as CK18) protein level by using anti-KRT18 antibody in human biphasic pulmonary blastoma tissues, A-C: TTF-1, CK (AE1/AE3) and CK18 are positive in epithelial component (DAB, magnification $\times 200$). [View Citation](#)



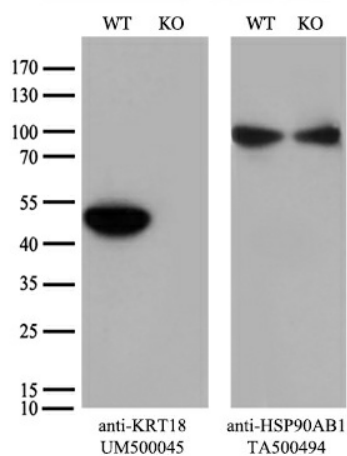
Western blot analysis of extracts (35ug) from 9 different cell lines by using anti-KRT8 monoclonal antibody (Clone UMAB50).



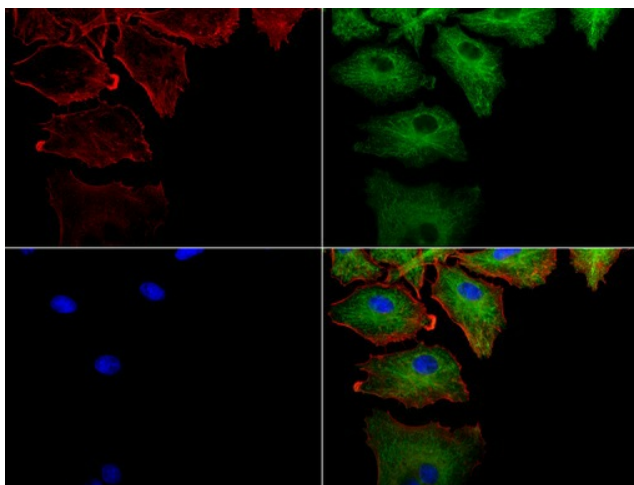
HEK293T were transfected with 55 different plasmids of CK cDNA (1, 2, 4, 5, 6a, 6b, 6c, 7, 8, 9, 12, 13, 14, 15, 16, 17, 18 v1, 18 v2, 19, 20, 24, 25, 26, 27, 28, 31, 32, 33a, 33b, 34, 35, 36, 37, 38, 39, 40, 71, 72 v1, 72 v3, 73, 74, 75, 76, 77, 78, 79, 80 v1, 80 v2, 81, 82, 83, 84, 85, 86 and 222) for 48 hrs and lysed. Cell lysates (5 ug per lane) were separated by SDS-PAGE and blotted with KRT19 antibody. KRT12, 19, 25, 26, 27, 28 and 39 were positive, while all others were negative (1:500).



Western blot of human tissue lysates (15ug) from 10 different tissues (1: Testis, 2: Omentum, 3: Uterus, 4: Breast, 5: Brain, 6: Liver, 7: Ovary, 8: Thyroid, 9: Colon, 10: Spleen). Dilution: 1:500.



Equivalent amounts of cell lysates (10 ug per lane) of wild-type HeLa cells (WT, Cat# LC810HELA) and KRT18-Knockout HeLa cells (KO, Cat# [LC831285]) were separated by SDS-PAGE and immunoblotted with anti-KRT18 monoclonal antibody UM500045 (1:2000). Then the blotted membrane was stripped and reprobed with anti-HSP90 antibody as a loading control.



Immunofluorescent staining of A549 cells using KRT18 mouse monoclonal antibody (UM500045, green). Actin filaments were labeled with TRITC-phalloidin (red), and nuclear with DAPI (blue). The three-color overlay image is located at the bottom-right corner.