

Product datasheet for **UM500044**

L1CAM Mouse Monoclonal Antibody [Clone ID: UMAB48]

Product data:

Product Type:	Primary Antibodies
Clone Name:	UMAB48
Applications:	IF, IHC, WB
Recommended Dilution:	IHC 1:100
Reactivity:	Human, Mouse, Rat
Host:	Mouse
Isotype:	IgG1
Clonality:	Monoclonal
Immunogen:	Full length human recombinant protein of human L1CAM (NP_000416) produced in HEK293T cell.
Formulation:	PBS (pH 7.3) containing 1% BSA, 50% glycerol and 0.02% sodium azide.
Concentration:	0.5~1.0 mg/ml (Lot Dependent)
Purification:	Purified from mouse ascites fluids or tissue culture supernatant by affinity chromatography (protein A/G)
Conjugation:	Unconjugated
Storage:	Store at -20°C as received.
Stability:	Stable for 12 months from date of receipt.
Predicted Protein Size:	137.8 kDa
Gene Name:	L1 cell adhesion molecule
Database Link:	NP_000416 Entrez Gene 16728 Mouse Entrez Gene 50687 Rat Entrez Gene 3897 Human P32004



[View online »](#)

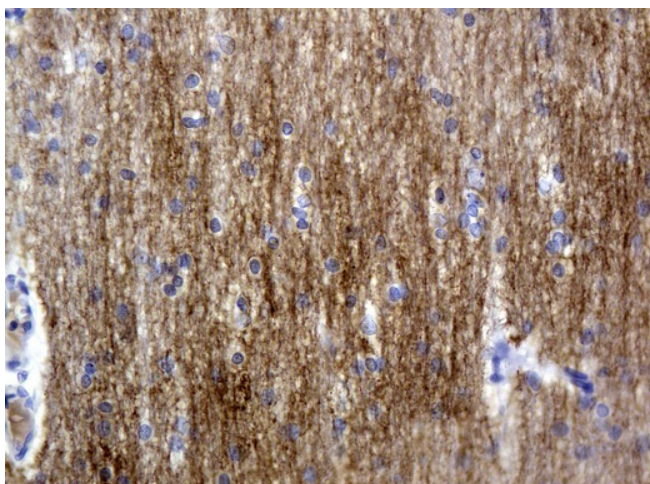
Background: The protein encoded by this gene is an axonal glycoprotein belonging to the immunoglobulin supergene family. The ectodomain, consisting of several immunoglobulin-like domains and fibronectin-like repeats (type III), is linked via a single transmembrane sequence to a conserved cytoplasmic domain. This cell adhesion molecule plays an important role in nervous system development, including neuronal migration and differentiation. Mutations in the gene cause three X-linked neurological syndromes known by the acronym CRASH (corpus callosum hypoplasia, retardation, aphasia, spastic paraplegia and hydrocephalus). Alternative splicing of a neuron-specific exon is thought to be functionally relevant. [provided by RefSeq, Jul 2008]

Synonyms: CAML1; CD171; HSAS; HSAS1; MASA; MIC5; N-CAM-L1; N-CAML1; NCAM-L1; S10; SPG1

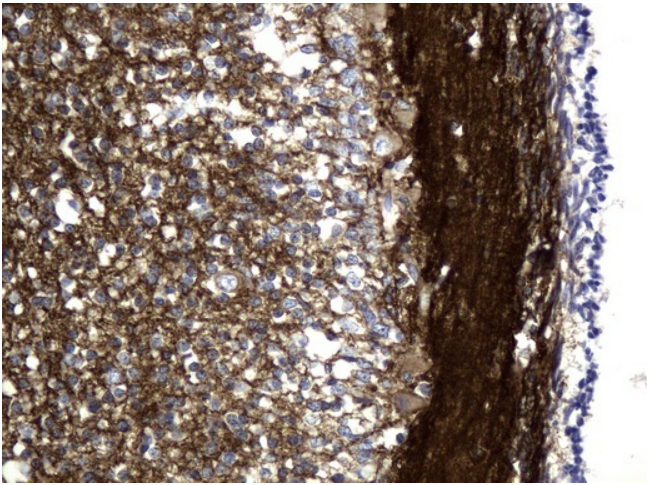
Protein Families: Druggable Genome, ES Cell Differentiation/IPS, Transmembrane

Protein Pathways: Axon guidance, Cell adhesion molecules (CAMs)

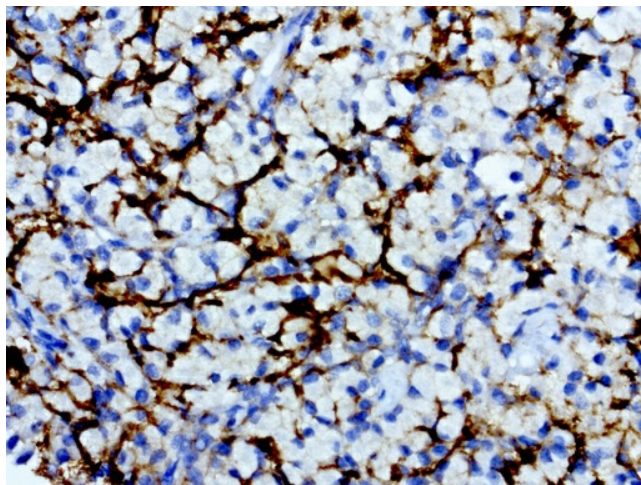
Product images:



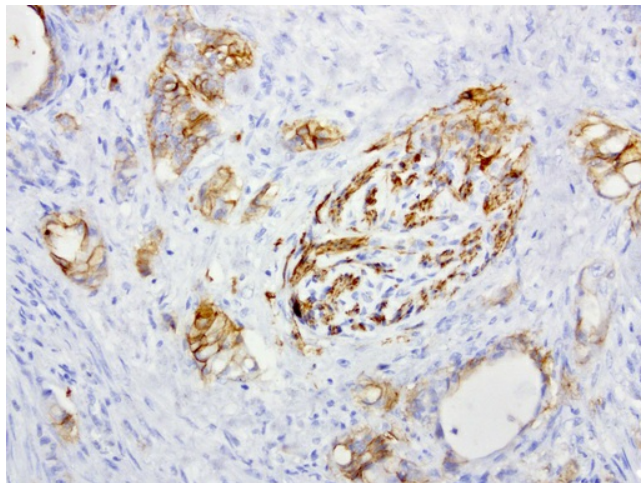
Immunohistochemical staining of paraffin-embedded Human adult brain tissue using anti-L1CAM mouse monoclonal antibody. (UM500044; heat-induced epitope retrieval by 10mM citric buffer, pH6.0, 120°C for 3min)



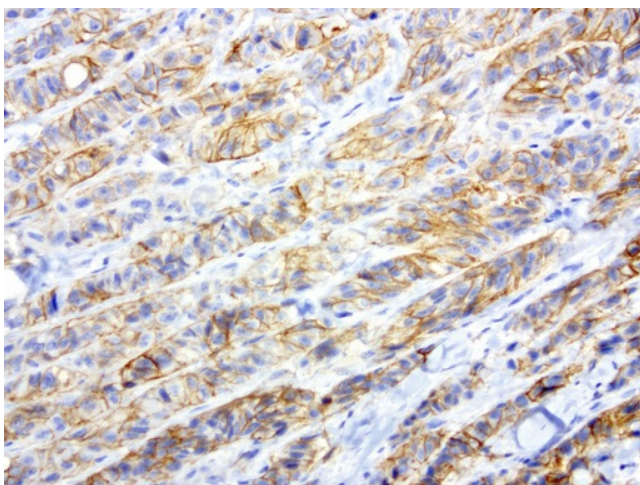
Immunohistochemical staining of paraffin-embedded Human embryonic cerebellum using anti-L1CAM mouse monoclonal antibody (UM500044; heat-induced epitope retrieval by 10mM citric buffer, pH6.0, 120°C for 3min)



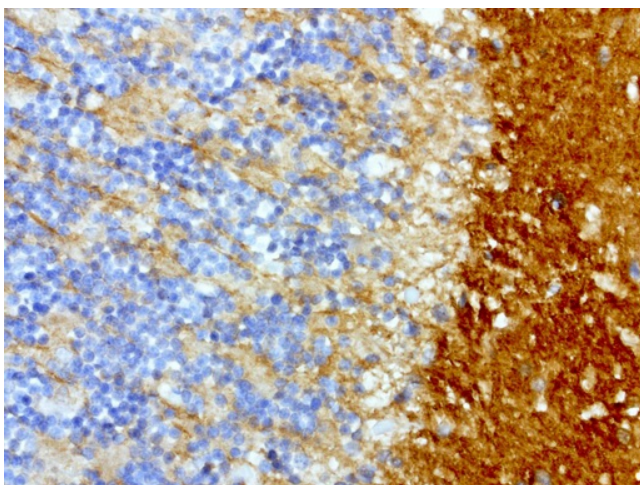
Immunohistochemical staining of paraffin-embedded human pituitary using anti-L1CAM clone UMAB48 mouse monoclonal antibody (UM500044) at 1:200 with Polink2 Broad HRP DAB detection kit; heat-induced epitope retrieval with GBI ACCEL HIER buffer using pressure chamber for 3 minutes at 110C. Image shows only a subset of cells with positive cytoplasmic and membraneous stain.



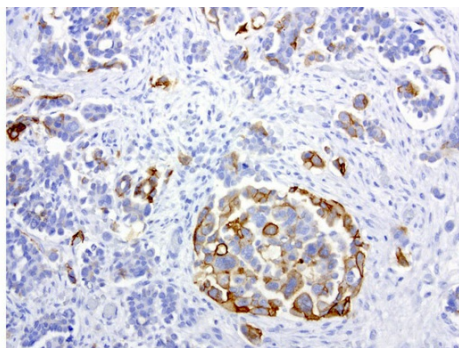
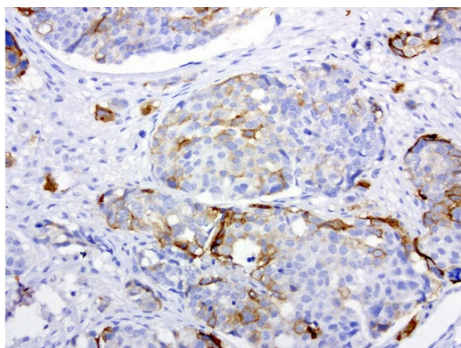
Immunohistochemical staining of paraffin-embedded human colon cancer using anti-L1CAM clone UMAB48 mouse monoclonal antibody (UM500044) at 1:200 with Polink2 Broad HRP DAB detection kit; heat-induced epitope retrieval with GBI ACCEL HIER buffer using pressure chamber for 3 minutes at 110C. Image shows tumor cells with positive cytoplasmic and membraneous stain.



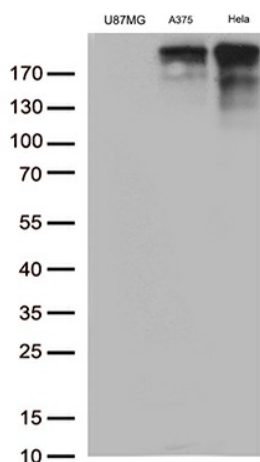
Immunohistochemical staining of paraffin-embedded human melanoma using anti-L1CAM clone UMAB48 mouse monoclonal antibody (UM500044) at 1:200 with Polink2 Broad HRP DAB detection kit; heat-induced epitope retrieval with GBI ACCEL HIER buffer using pressure chamber for 3 minutes at 110C. Image shows strong positive membraneous and cytoplasmic staining in the tumor cells.



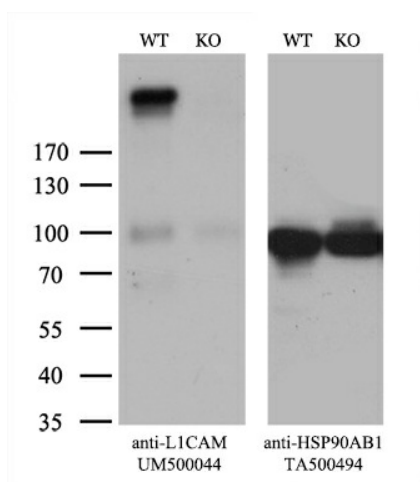
Immunohistochemical staining of paraffin-embedded human brain using anti-L1CAM clone UMAB48 mouse monoclonal antibody (UM500044) at 1:200 with Polink2 Broad HRP DAB detection kit; heat-induced epitope retrieval with GBI ACCEL HIER buffer using pressure chamber for 3 minutes at 110C. Image shows positive cytoplasmic and membraneous stain granular layer and molecular layer.



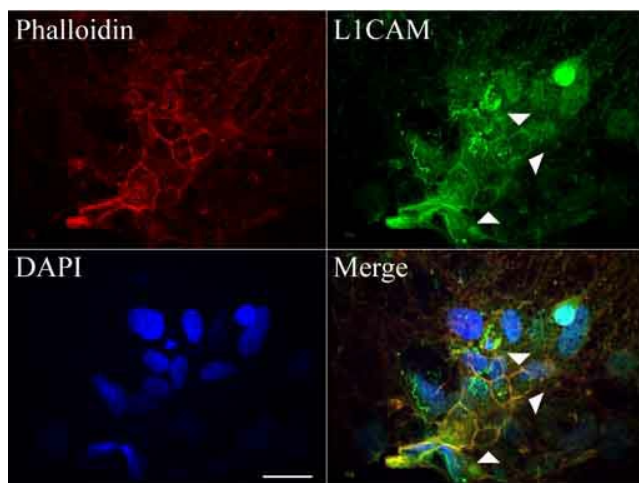
Immunohistochemical staining of paraffin-embedded human ovarian carcinoma using anti-L1CAM clone UMAB48 mouse monoclonal antibody (UM500044) at 1:200 with Polink2 Broad HRP DAB detection kit; heat-induced epitope retrieval with GBI ACCEL HIER buffer using pressure chamber for 3 minutes at 110C. Image shows positive cytoplasmic and membraneous stain in a subset of the tumor cells.



Western blot analysis of extracts (35ug) from 3 cell line lysates by using anti-L1CAM monoclonal antibody (1:500).



Equivalent amounts of cell lysates (10 ug per lane) of wild-type HeLa cells (WT, Cat# LC810HELA) and L1CAM-Knockout HeLa cells (KO, Cat# [LC832196]) were separated by SDS-PAGE and immunoblotted with anti-L1CAM monoclonal antibody UM500044 (1:2000). Then the blotted membrane was stripped and reprobed with anti-HSP90 antibody as a loading control.



Confocal immunofluorescence image of primary rat neurons labeled with anti-L1CAM mouse monoclonal antibody (UM500044, green, 1:50). Actin filaments were labeled with TRITC-Phalloidin (red), and nuclear with DAPI (blue). Scale bar, 20µm.