

Product datasheet for **UM500042CF**

CD1C Mouse Monoclonal Antibody [Clone ID: UMAB46]

Product data:

Product Type:	Primary Antibodies
Clone Name:	UMAB46
Applications:	10k-ChIP, IHC, WB
Recommended Dilution:	IHC 1:100
Reactivity:	Human
Host:	Mouse
Isotype:	IgG1
Clonality:	Monoclonal
Immunogen:	Full length human recombinant protein of human CD1C(NP_001756) produced in HEK293T cell.
Formulation:	Lyophilized powder (original buffer 1X PBS, pH 7.3, 8% trehalose)
Reconstitution Method:	For reconstitution, we recommend adding 100uL distilled water to a final antibody concentration of about 1 mg/mL. To use this carrier-free antibody for conjugation experiment, we strongly recommend performing another round of desalting process. (OriGene recommends Zeba Spin Desalting Columns, 7KMWCO from Thermo Scientific)
Purification:	Purified from mouse ascites fluids or tissue culture supernatant by affinity chromatography (protein A/G)
Conjugation:	Unconjugated
Storage:	Store at -20°C as received.
Stability:	Stable for 12 months from date of receipt.
Predicted Protein Size:	35.7 kDa
Gene Name:	CD1c molecule
Database Link:	NP_001756 Entrez Gene 911 Human P29017



[View online »](#)

Background:

This gene encodes a member of the CD1 family of transmembrane glycoproteins, which are structurally related to the major histocompatibility complex (MHC) proteins and form heterodimers with beta-2-microglobulin. The CD1 proteins mediate the presentation of primarily lipid and glycolipid antigens of self or microbial origin to T cells. The human genome contains five CD1 family genes organized in a cluster on chromosome 1. The CD1 family members are thought to differ in their cellular localization and specificity for particular lipid ligands. The protein encoded by this gene is broadly distributed throughout the endocytic system via a tyrosine-based motif in the cytoplasmic tail. Alternatively spliced transcript variants of this gene have been observed, but their full-length nature is not known. [provided by RefSeq, Jul

Synonyms:

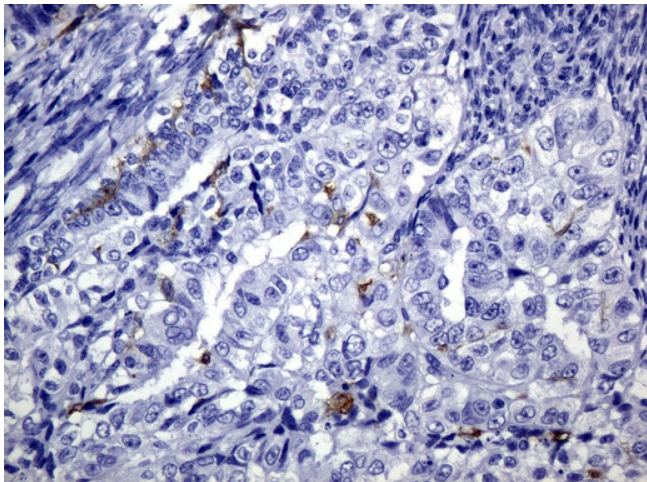
BDCA1; CD1; CD1A; R7

Protein Families:

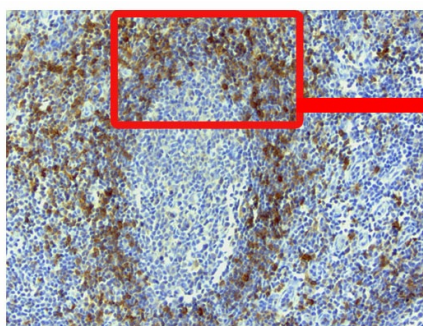
Druggable Genome, Transmembrane

Protein Pathways:

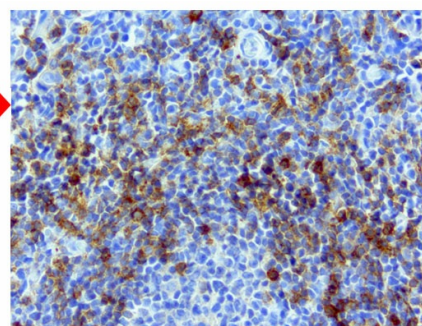
Hematopoietic cell lineage

Product images:

Immunohistochemical staining of paraffin-embedded Adenocarcinoma of Human endometrium tissue using anti-CD1C mouse monoclonal antibody. ([UM500042]; heat-induced epitope retrieval by 10mM citric buffer, pH6.0, 120°C for 3min)

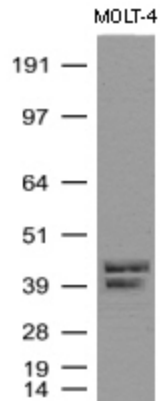


10x Tonsil

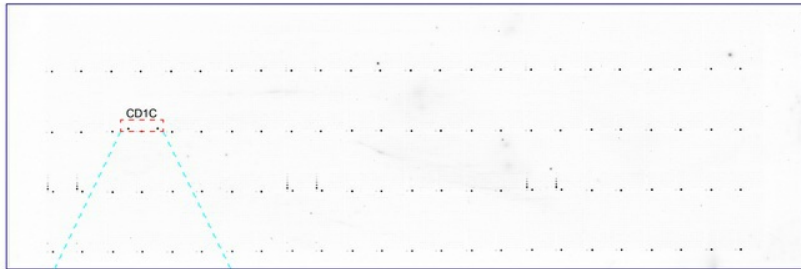


20x Tonsil

Immunohistochemical staining of paraffin-embedded human tonsil with mouse anti-CD1c clone UMAB46 1:200 dilution of 1mg/mL using HIER citrate pressure chamber. Shown here is a composited of 10x and 20x Imaging of tonsil with expression cytoplasmic and membranous staining pattern.



Western Blot analysis of MOLT-4 cell lysate (35ug) by using anti-CD1C monoclonal antibody (Clone UMAB46)



OriGene overexpression protein microarray chip was immunostained with UltraMAB anti-CD1C mouse monoclonal antibody ([UM500042]). The positive reactive proteins are highlighted with two red arrows in the enlarged subarray. All the positive controls spotted in this subarray are also labeled for clarification.

