

Product datasheet for **UM500039CF**

ALDH1L1 Mouse Monoclonal Antibody [Clone ID: UMAB43]

Product data:

Product Type:	Primary Antibodies
Clone Name:	UMAB43
Applications:	IF, IHC, WB
Recommended Dilution:	WB 1:500, IHC 1:400, IF 1:100
Reactivity:	Human, Mouse, Rat, Monkey, Dog
Host:	Mouse
Isotype:	IgG2b
Clonality:	Monoclonal
Immunogen:	Full length human recombinant protein of human ALDH1L1 (NP_036322) produced in HEK293T cell.
Formulation:	Lyophilized powder (original buffer 1X PBS, pH 7.3, 8% trehalose)
Reconstitution Method:	For reconstitution, we recommend adding 100uL distilled water to a final antibody concentration of about 1 mg/mL. To use this carrier-free antibody for conjugation experiment, we strongly recommend performing another round of desalting process. (OriGene recommends Zeba Spin Desalting Columns, 7KMWCO from Thermo Scientific)
Purification:	Purified from mouse ascites fluids or tissue culture supernatant by affinity chromatography (protein A/G)
Conjugation:	Unconjugated
Storage:	Store at -20°C as received.
Stability:	Stable for 12 months from date of receipt.
Predicted Protein Size:	98.6 kDa
Gene Name:	aldehyde dehydrogenase 1 family member L1
Database Link:	NP_036322 Entrez Gene 64392 Rat Entrez Gene 100855730 Dog Entrez Gene 716977 Monkey Entrez Gene 10840 Human O75891



[View online »](#)

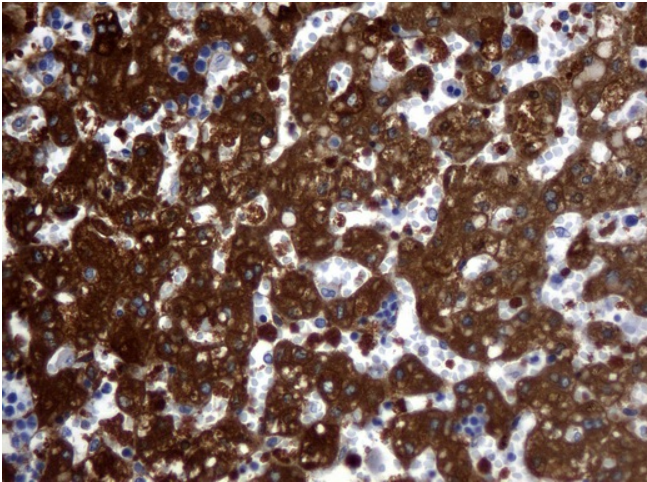
Background: The protein encoded by this gene catalyzes the conversion of 10-formyltetrahydrofolate, nicotinamide adenine dinucleotide phosphate (NADP+), and water to tetrahydrofolate, NADPH, and carbon dioxide. The encoded protein belongs to the aldehyde dehydrogenase family. Loss of function or expression of this gene is associated with decreased apoptosis, increased cell motility, and cancer progression. There is an antisense transcript that overlaps on the opposite strand with this gene locus. Alternative splicing results in multiple transcript variants. [provided by RefSeq, Jun 2012]

Synonyms: 10-fTHF; 10-FTHFDH; FDH; FTHFD

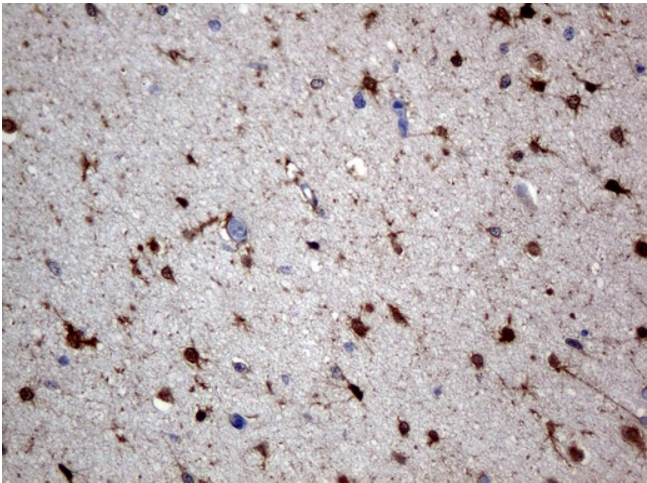
Protein Families: Druggable Genome

Protein Pathways: One carbon pool by folate

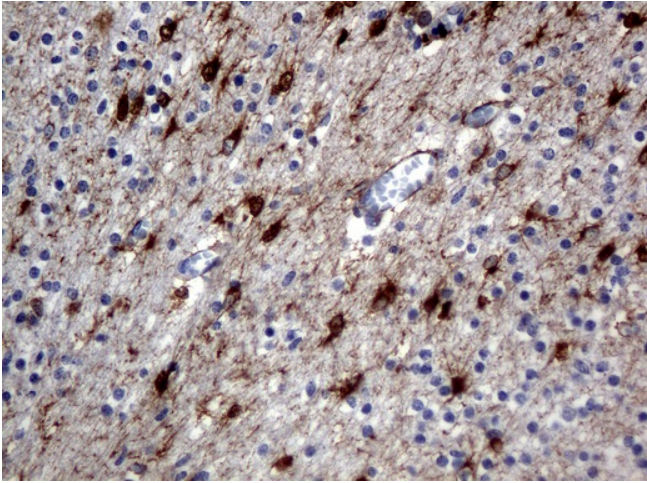
Product images:



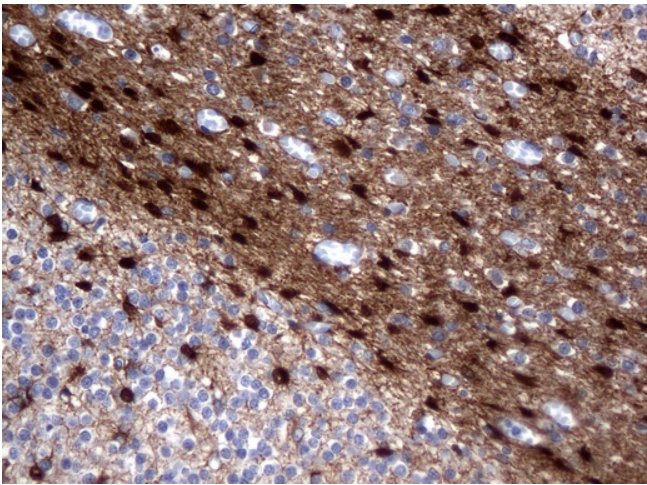
Immunohistochemical staining of paraffin-embedded human embryonic liver tissue using ALDH1L1 clone UMAB43 mouse monoclonal antibody. Heat-induced epitope retrieval by 10mM citric buffer, pH6.0, 120°C for 3min in pressure chamber/cooker. [UM500039] was diluted 1:400 and detection shown with HRP enzyme and DAB chromogen. Strong cytoplasmic and membranous staining is seen in the hepatocyte.



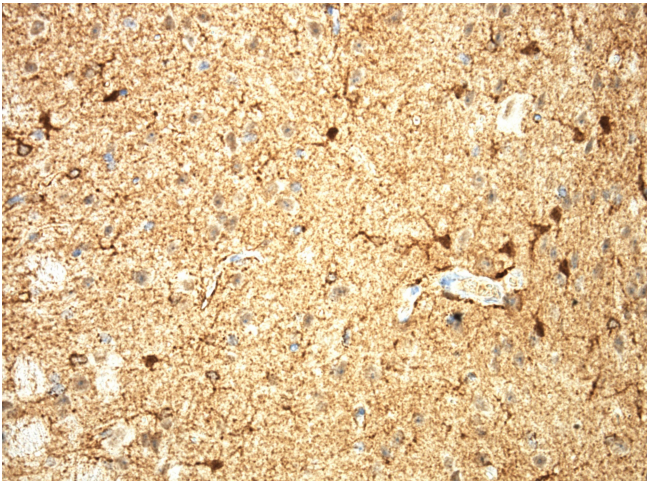
Immunohistochemical staining of paraffin-embedded Human adult brain tissue using anti-ALDH1L1 mouse monoclonal antibody. ([UM500039]; heat-induced epitope retrieval by 10mM citric buffer, pH6.0, 120°C for 3min)



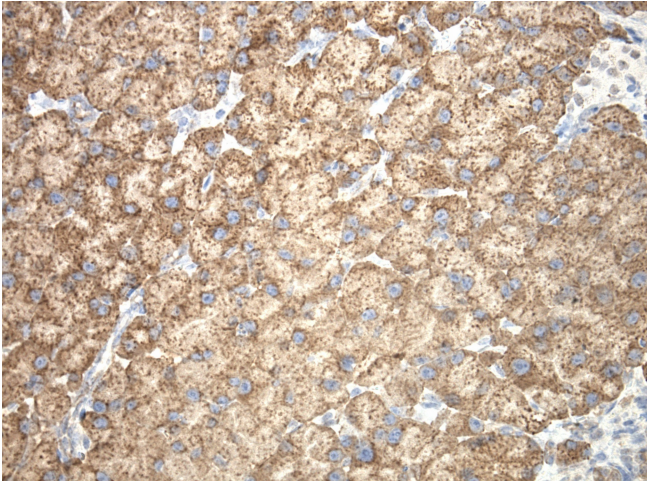
Immunohistochemical staining of paraffin-embedded human embryonic brain cortex tissue using ALDH1L1 clone UMAB43 mouse monoclonal antibody. Heat-induced epitope retrieval by 10mM citric buffer, pH6.0, 120°C for 3min in pressure chamber/cooker. [UM500039] was diluted 1:400 and detection shown with HRP enzyme and DAB chromogen. Strong cytoplasmic and membranous staining is seen in the glia, neuronal, and endothelial cells.



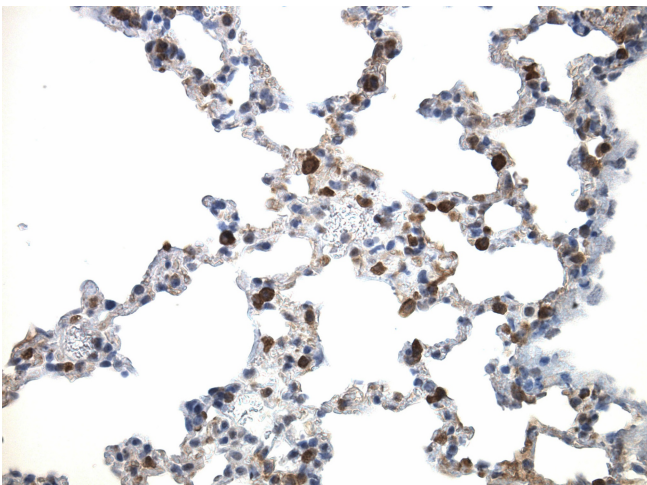
Immunohistochemical staining of paraffin-embedded Human embryonic cerebellum using anti-ALDH1L1 mouse monoclonal antibody. ([UM500039]; heat-induced epitope retrieval by 10mM citric buffer, pH6.0, 120°C for 3min)



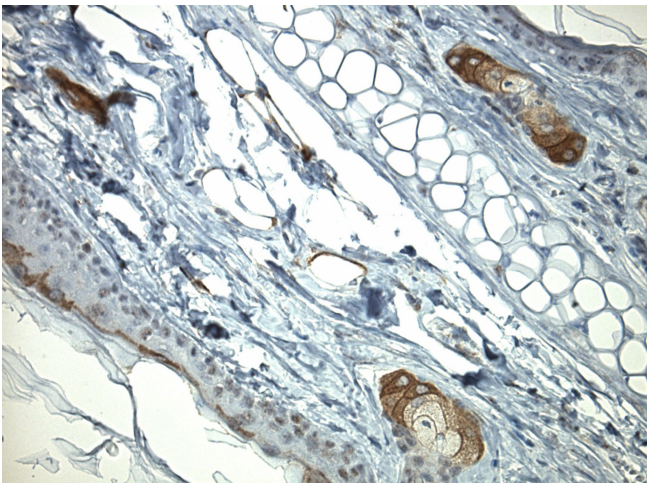
Immunohistochemical staining of paraffin-embedded mouse brain tissue using anti-ALDH1L1 clone UMAB43 mouse monoclonal antibody. HIER TEE buffer pH9 ([B21-100]) at 110C for 10 min, [UM500039] (1:100). Detection was done with Klear Mouse (C/N [D52-18]) DAB Kit.



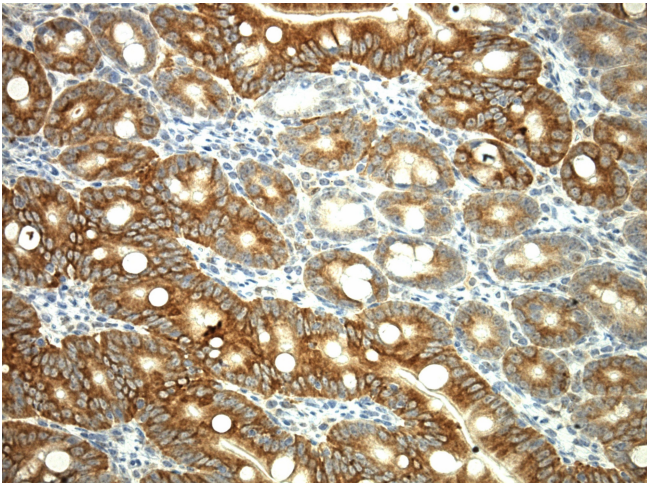
Immunohistochemical staining of paraffin-embedded mouse kidney tissue using anti-ALDH1L1 clone UMAB43 mouse monoclonal antibody. HIER TEE buffer pH9 ([B21-100]) at 110C for 10 min, [UM500039] (1:100). Detection was done with Klear Mouse (C/N [D52-18]) DAB Kit.



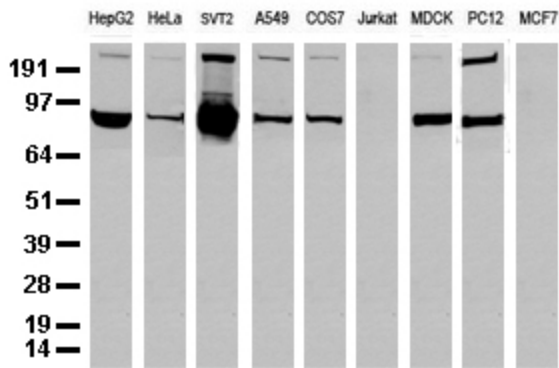
Immunohistochemical staining of paraffin-embedded mouse lung tissue using anti-ALDH1L1 clone UMAB43 mouse monoclonal antibody. HIER TEE buffer pH9 ([B21-100]) at 110C for 10 min, [UM500039] (1:100). Detection was done with Klear Mouse (C/N [D52-18]) DAB Kit.



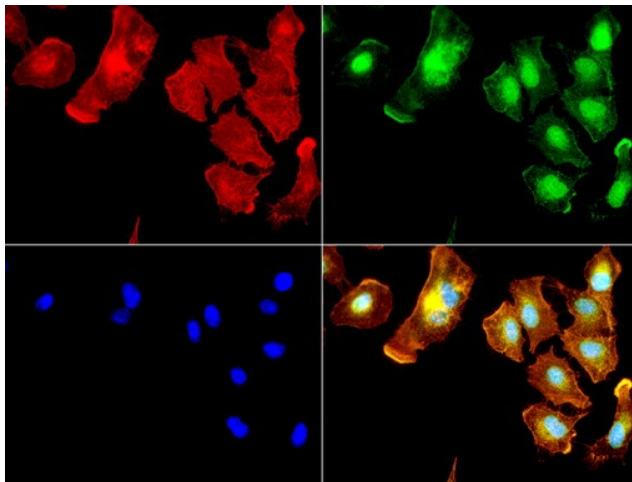
Immunohistochemical staining of paraffin-embedded mouse skin tissue using anti-ALDH1L1 clone UMAB43 mouse monoclonal antibody. HIER TEE buffer pH9 ([B21-100]) at 110C for 10 min, [UM500039] (1:100). Detection was done with Klear Mouse (C/N [D52-18]) DAB Kit.



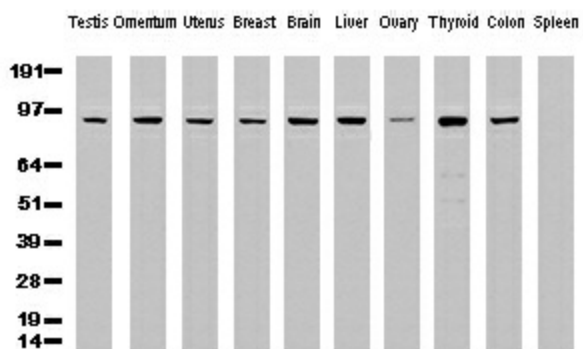
Immunohistochemical staining of paraffin-embedded mouse small intestine tissue using anti-ALDH1L1 clone UMAB43 mouse monoclonal antibody. HIER TEE buffer pH9 ([B21-100]) at 110C for 10 min, [UM500039] (1:100). Detection was done with Klear Mouse (C/N [D52-18]) DAB Kit.



Western blot analysis of extracts (35ug) from 9 different cell lines by using anti-ALDH1L1 monoclonal antibody (Clone UMAB43).



Immunofluorescent staining of A549 cells using ALDH1L1 mouse monoclonal antibody ([UM500039], green). Actin filaments were labeled with TRITC-phalloidin (red), and nuclear with DAPI (blue). The three-color overlay image is located at the bottom-right corner.



Western Blot analysis of 10 different human tissue lysates (10ug) by using anti-ALDH1L1 monoclonal antibody (clone UMAB43, 1:500)