

## Product datasheet for **UM500038CF**

### **BMP4 Mouse Monoclonal Antibody [Clone ID: UMAB42]**

#### **Product data:**

<b>Product Type:</b>	Primary Antibodies
<b>Clone Name:</b>	UMAB42
<b>Applications:</b>	10k-ChIP, IF, IHC, WB
<b>Recommended Dilution:</b>	WB 1:500, IHC 1:100
<b>Reactivity:</b>	Human, Mouse, Rat
<b>Host:</b>	Mouse
<b>Isotype:</b>	IgG1
<b>Clonality:</b>	Monoclonal
<b>Immunogen:</b>	Recombinant fragment expressed in E.coli corresponding to amino acids 293-408 of human BMP4
<b>Formulation:</b>	Lyophilized powder (original buffer 1X PBS, pH 7.3, 8% trehalose)
<b>Reconstitution Method:</b>	For reconstitution, we recommend adding 100uL distilled water to a final antibody concentration of about 1 mg/mL. To use this carrier-free antibody for conjugation experiment, we strongly recommend performing another round of desalting process. (OriGene recommends Zeba Spin Desalting Columns, 7KMWCO from Thermo Scientific)
<b>Purification:</b>	Purified from mouse ascites fluids or tissue culture supernatant by affinity chromatography (protein A/G)
<b>Conjugation:</b>	Unconjugated
<b>Storage:</b>	Store at -20°C as received.
<b>Stability:</b>	Stable for 12 months from date of receipt.
<b>Predicted Protein Size:</b>	46.4 kDa
<b>Gene Name:</b>	bone morphogenetic protein 4
<b>Database Link:</b>	<a href="#">NP_570911</a> <a href="#">Entrez Gene 12159 Mouse</a> <a href="#">Entrez Gene 25296 Rat</a> <a href="#">Entrez Gene 652 Human</a> <a href="#">P12644</a>
<b>Synonyms:</b>	BMP2B; BMP2B1; MCOPS6; OFC11; ZYME



[View online »](#)

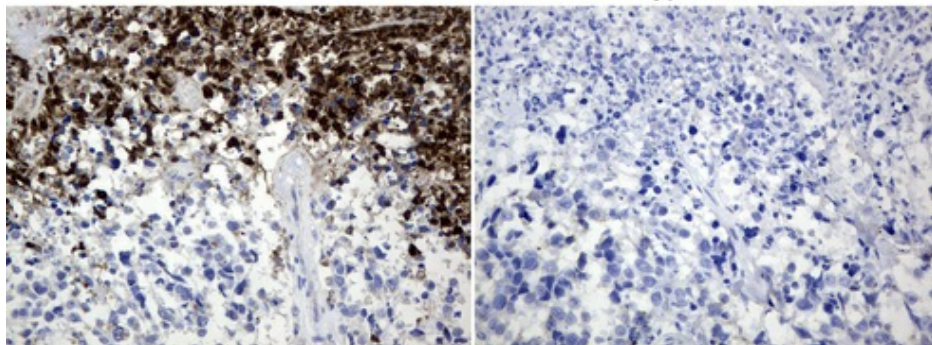
**Protein Families:** Adult stem cells, Cancer stem cells, Druggable Genome, Embryonic stem cells, Induced pluripotent stem cells, Secreted Protein, Stem cell relevant signaling - TGFb/BMP signaling pathway

**Protein Pathways:** Basal cell carcinoma, Hedgehog signaling pathway, Pathways in cancer, TGF-beta signaling pathway

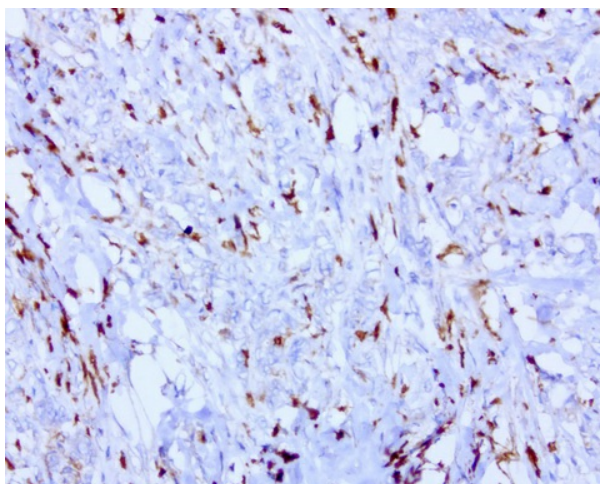
### Product images:

UM500038

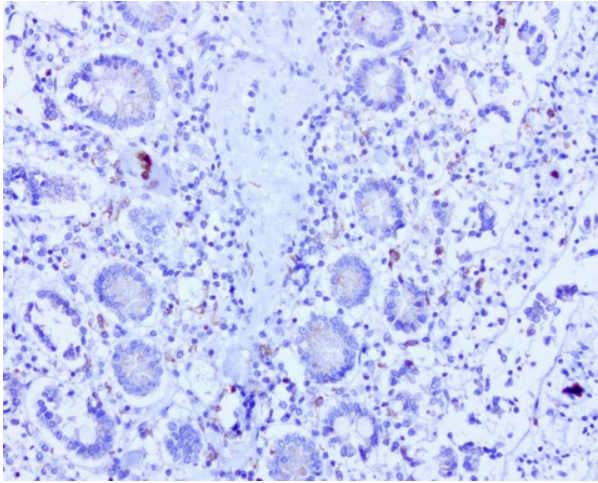
Isotype control



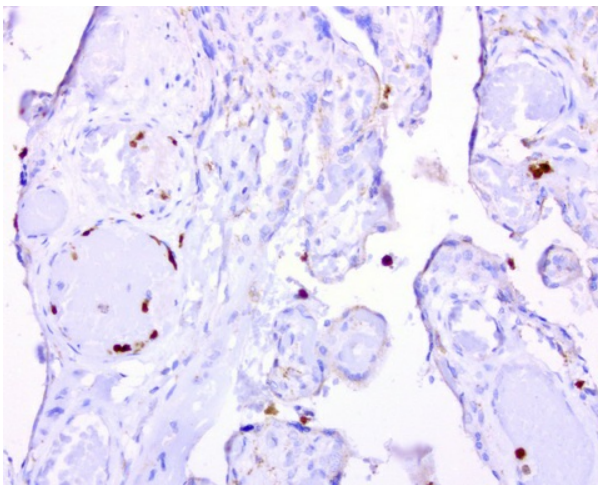
Immunohistochemical staining of paraffin-embedded human melanoma using anti-BMP4 mouse monoclonal antibody; an unrelated antibody of the same isotype was used as negative control. (Clone UMAB38, dilution 1:50; heat-induced epitope retrieval by 10mM citri



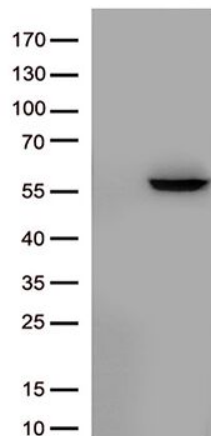
Immunohistochemical staining of paraffin-embedded human stomach carcinoma using BMP4 clone UMAB42, mouse monoclonal antibody at 1:100 dilution of 1mg/mL using Polink2 Broad HRP DAB for detection. [UM500038] requires heat-induced epitope retrieval with Accel pH8.7 at 110°C for 3min using pressure chamber/cooker. The image shows strong membranous and cytoplasmic staining.



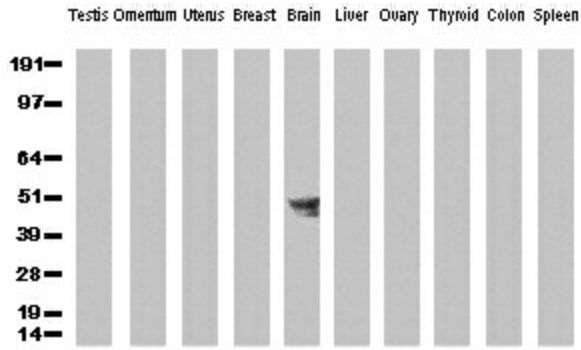
Immunohistochemical staining of paraffin-embedded human small intestine using BMP4 clone UMAB42, mouse monoclonal antibody at 1:100 dilution of 1mg/mL using Polink2 Broad HRP DAB for detection. [UM500038] requires heat-induced epitope retrieval with Accel pH8.7 at 110°C for 3min using pressure chamber/cooker. The image shows strong membranous and cytoplasmic staining.



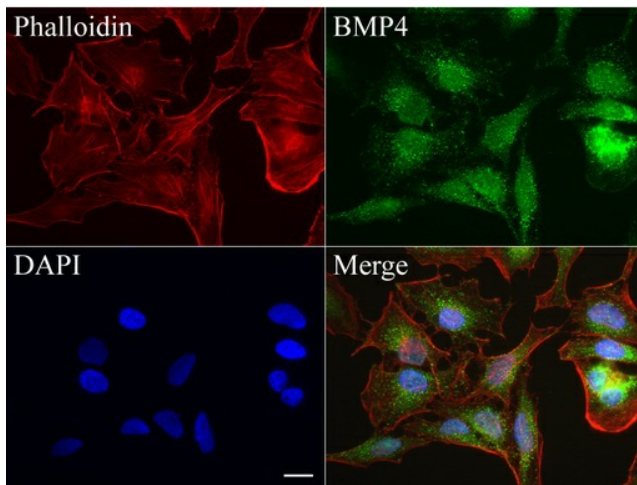
Immunohistochemical staining of paraffin-embedded human placenta using BMP4 clone UMAB42, mouse monoclonal antibody at 1:100 dilution of 1mg/mL using Polink2 Broad HRP DAB for detection. [UM500038] requires heat-induced epitope retrieval with Accel pH8.7 at 110°C for 3min using pressure chamber/cooker. The image shows strong membranous and cytoplasmic staining.



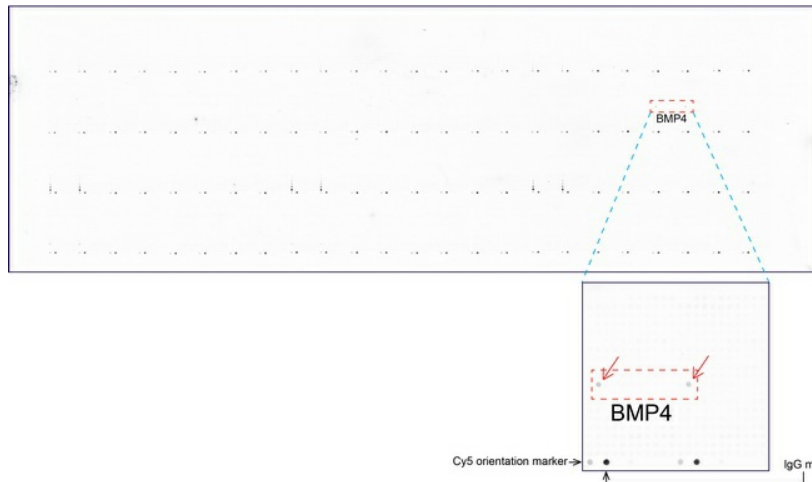
HEK293T cells were transfected with the pCMV6-ENTRY control (left lane) or pCMV6-ENTRY BMP4 (Cat# [RC219979], right lane) cDNA for 48 hrs and lysed. Equivalent amounts of cell lysates (5 ug per lane) were separated by SDS-PAGE and immunoblotted with anti-BMP4. (Cat# [UM500038])



Western Blot analysis of 10 different human tissue lysates (10ug) by using anti-BMP4 monoclonal antibody (clone UMAB42, 1:500)



Immunofluorescent staining of HeLa cells using anti-BMP4 mouse monoclonal antibody ([UM500038], green, 1:100). Actin filaments were labeled with Alexa Fluor® 594 Phalloidin (red), and nuclear with DAPI (blue). Scale bar, 20µm.



OriGene overexpression protein microarray chip was immunostained with UltraMAB anti-BMP4 mouse monoclonal antibody (Clone UMAB38). The positive reactive proteins are highlighted with two red arrows in the enlarged subarray. All the positive controls spotted in this subarray are also labeled for clarification. These data show that UltraMAB anti-BMP4 (Clone UMAB38) very specifically recognizes BMP4 antigen on OriGene protein microarray chip.