

## Product datasheet for **UM500024CF**

### **S100P Mouse Monoclonal Antibody [Clone ID: UMAB24]**

#### **Product data:**

Product Type:	Primary Antibodies
Clone Name:	UMAB24
Applications:	10k-ChIP, IF, IHC, WB
Recommended Dilution:	WB 1:1000
Reactivity:	Human
Host:	Mouse
Isotype:	IgG1
Clonality:	Monoclonal
Immunogen:	Full length human recombinant protein of human S100P(NP_005971) produced in HEK293T cell.
Formulation:	Lyophilized powder (original buffer 1X PBS, pH 7.3, 8% trehalose)
Reconstitution Method:	For reconstitution, we recommend adding 100uL distilled water to a final antibody concentration of about 1 mg/mL. To use this carrier-free antibody for conjugation experiment, we strongly recommend performing another round of desalting process. (OriGene recommends Zeba Spin Desalting Columns, 7KMWCO from Thermo Scientific)
Purification:	Purified from mouse ascites fluids or tissue culture supernatant by affinity chromatography (protein A/G)
Conjugation:	Unconjugated
Storage:	Store at -20°C as received.
Stability:	Stable for 12 months from date of receipt.
Predicted Protein Size:	10.2 kDa
Gene Name:	S100 calcium binding protein P
Database Link:	<a href="#">NP_005971</a> <a href="#">Entrez Gene 6286 Human</a> <a href="#">P25815</a>

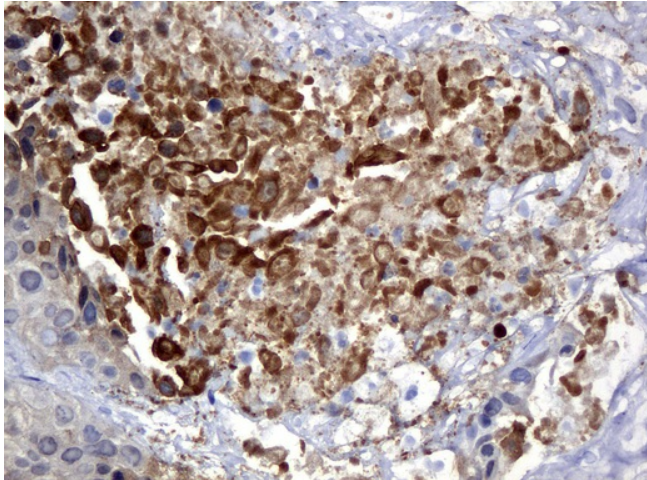
[View online »](#)

**Background:**

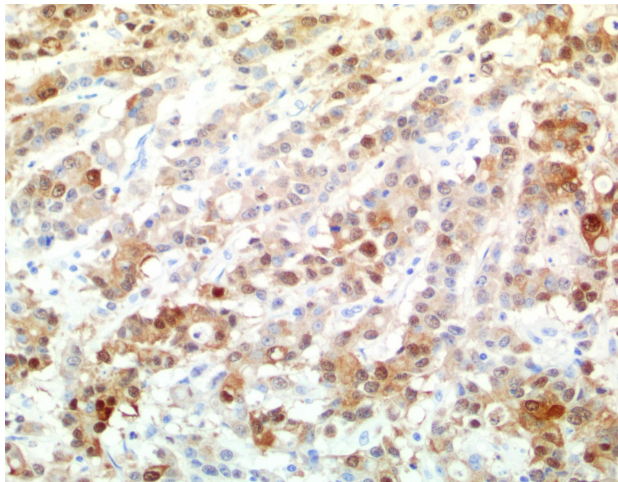
The protein encoded by this gene is a member of the S100 family of proteins containing 2 EF-hand calcium-binding motifs. S100 proteins are localized in the cytoplasm and/or nucleus of a wide range of cells, and involved in the regulation of a number of cellular processes such as cell cycle progression and differentiation. S100 genes include at least 13 members which are located as a cluster on chromosome 1q21; however, this gene is located at 4p16. This protein, in addition to binding  $\text{Ca}^{2+}$ , also binds  $\text{Zn}^{2+}$  and  $\text{Mg}^{2+}$ . This protein may play a role in the etiology of prostate cancer. [provided by RefSeq]

**Synonyms:**

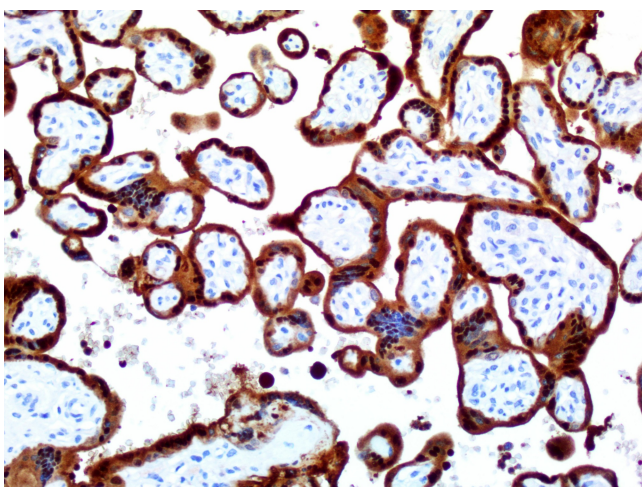
MIG9

**Product images:**


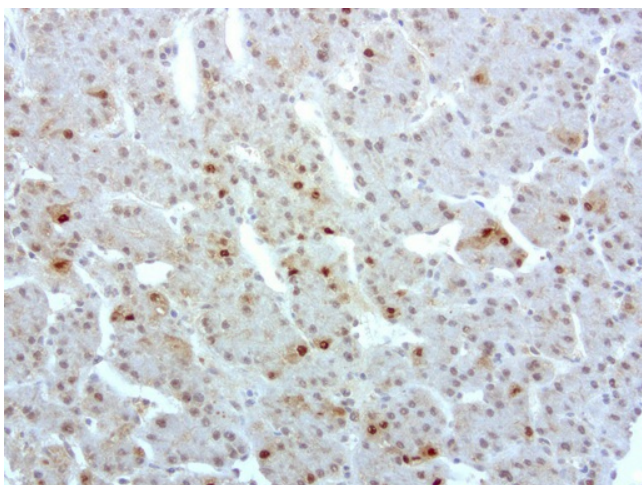
Immunohistochemical staining of paraffin-embedded Carcinoma of bladder tissue using anti-S100P mouse monoclonal antibody. (Clone UMAB24, dilution 1:100; heat-induced epitope retrieval by 10mM citric buffer, pH6.0, 120°C for 3min)



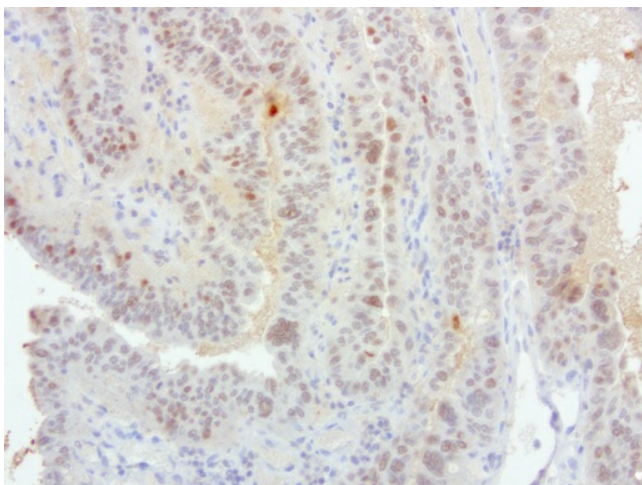
Immunohistochemical staining of paraffin-embedded human colon cancer using anti-S100P clone UMAB24 mouse monoclonal antibody @ 2 ug/mL with Polink2 Broad HRP DAB detection kit; heat-induced epitope retrieval with Citrate pH6.0



Immunohistochemical staining of paraffin-embedded human placenta using anti-S100P clone UMAB24 mouse monoclonal antibody @ 2 ug/mL with Polink2 Broad HRP DAB detection kit; heat-induced epitope retrieval with Citrate pH6.1

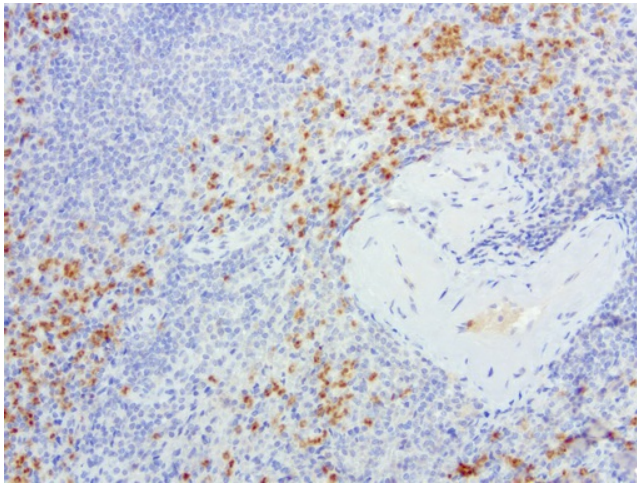


Immunohistochemical staining of paraffin-embedded human liver cancer using anti-S100P clone UMAB24 mouse monoclonal antibody ([UM500024]) at 1:200 with Polink2 Broad HRP DAB detection kit; heat-induced epitope retrieval with GBI Accel pH8.7 HIER buffer using pressure chamber for 3 minutes at 110C. Nuclear, cytoplasmic, and membrane staining is seen in infiltrating lymphocytes and no staining is tumor cells.

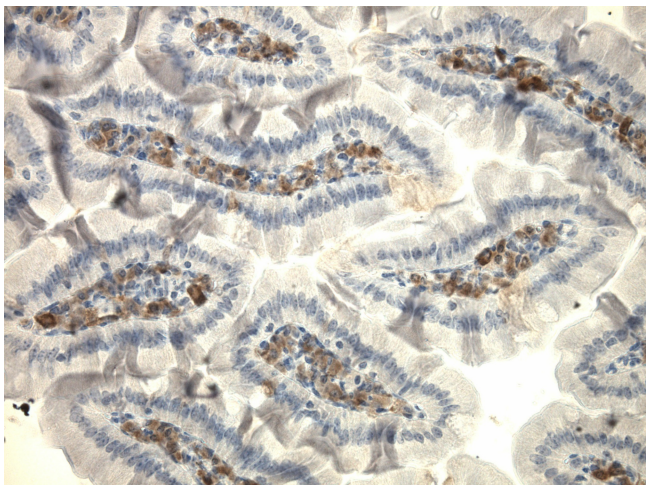


Immunohistochemical staining of paraffin-embedded human gastric cancer using anti-S100P clone UMAB24 mouse monoclonal antibody ([UM500024]) at 1:200 with Polink2 Broad HRP DAB detection kit; heat-induced epitope retrieval with GBI Accel pH8.7 HIER buffer using pressure chamber for 3 minutes at 110C. Nuclear and cytoplasmic staining is seen in tumor cells.

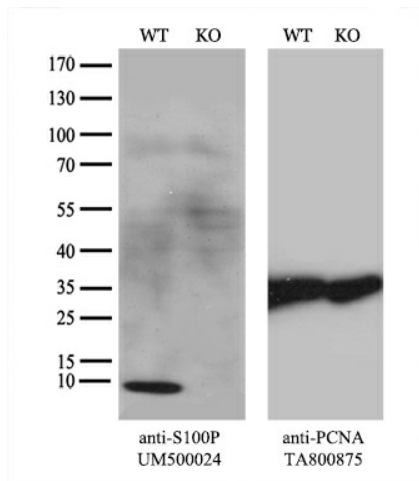




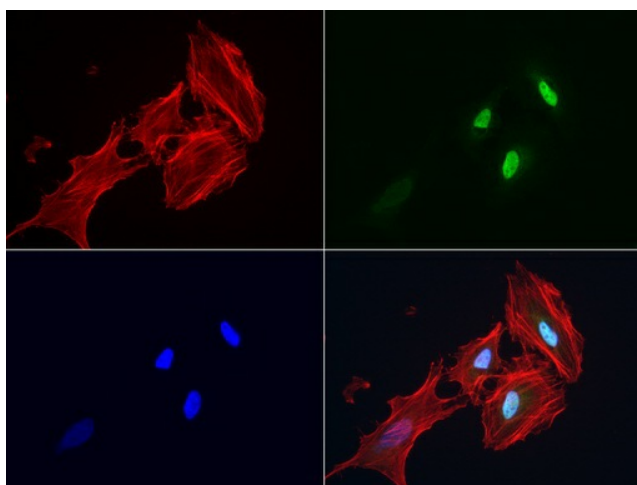
Immunohistochemical staining of paraffin-embedded human spleen using anti-S100P clone UMAB24 mouse monoclonal antibody ([UM500024]) at 1:200 with Polink2 Broad HRP DAB detection kit; heat-induced epitope retrieval with GBI Accel pH8.7 HIER buffer using pressure chamber for 3 minutes at 110C. Nuclear and cytoplasmic staining is seen in red pulp cells.



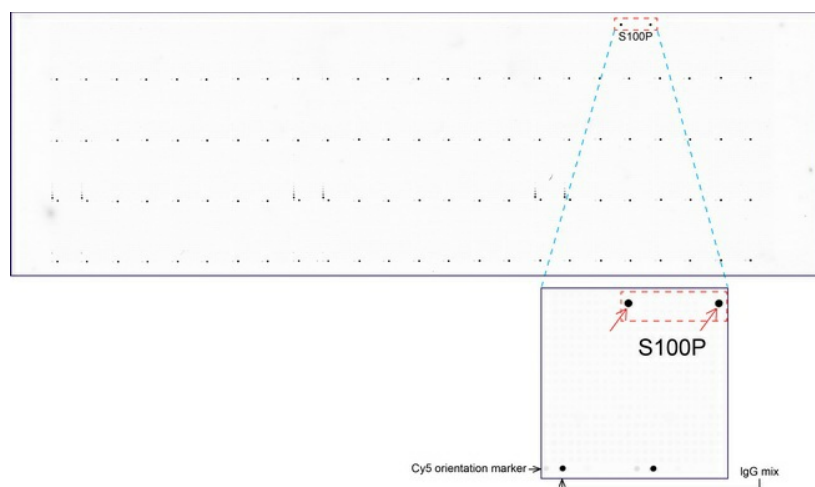
Immunohistochemical staining of paraffin-embedded mouse small intestine tissue using anti-S100P clone UMAB24 mouse monoclonal antibody. HIER TEE buffer pH9 ([B21-100]) at 110C for 10 min, [UM500024] (1:100). Detection was done with Klear Mouse (C/N [D52-18]) DAB Kit.



Equivalent amounts of cell lysates (10 ug per lane) of wild-type HeLa cells (WT, Cat# LC810HELA) and S100P-Knockout HeLa cells (KO, Cat# [LC810436]) were separated by SDS-PAGE and immunoblotted with anti-S100P monoclonal antibody [UM500024] (1:100). Then the blotted membrane was stripped and reprobed with anti-PCNA antibody as a loading control.



Immunofluorescent staining of HeLa cells using anti-S100P mouse monoclonal antibody ([UM500024], green, 1:50). Actin filaments were labeled with Alexa Fluor® 594 Phalloidin (red), and nuclear with DAPI (blue).



OriGene overexpression protein microarray chip was immunostained with UltraMAB anti-S100P mouse monoclonal antibody (Clone UMAB24). The positive reactive proteins are highlighted with two red arrows in the enlarged subarray. All the positive controls spotted in this subarray are also labeled for clarification. These data show that UltraMAB anti-S100P (Clone UMAB24) very specifically recognizes S100P antigen on OriGene protein microarray chip.