

## Product datasheet for **UM500021CF**

### **XPF (ERCC4) Mouse Monoclonal Antibody [Clone ID: UMAB21]**

#### **Product data:**

<b>Product Type:</b>	Primary Antibodies
<b>Clone Name:</b>	UMAB21
<b>Applications:</b>	10k-ChIP, IF, IHC, WB
<b>Recommended Dilution:</b>	WB 1:200~500, IF 1:100, FLOW 1:100, IHC 1:500
<b>Reactivity:</b>	Human, Dog, Rat, Monkey, Mouse
<b>Host:</b>	Mouse
<b>Isotype:</b>	IgG1
<b>Clonality:</b>	Monoclonal
<b>Immunogen:</b>	Full length human recombinant protein of human XPF (NP_005227) produced in HEK293 cell.
<b>Formulation:</b>	Lyophilized powder (original buffer 1X PBS, pH 7.3, 8% trehalose)
<b>Reconstitution Method:</b>	For reconstitution, we recommend adding 100uL distilled water to a final antibody concentration of about 1 mg/mL. To use this carrier-free antibody for conjugation experiment, we strongly recommend performing another round of desalting process. (OriGene recommends Zeba Spin Desalting Columns, 7KMWCO from Thermo Scientific)
<b>Purification:</b>	Purified from mouse ascites fluids or tissue culture supernatant by affinity chromatography (protein A/G)
<b>Conjugation:</b>	Unconjugated
<b>Storage:</b>	Store at -20°C as received.
<b>Stability:</b>	Stable for 12 months from date of receipt.
<b>Predicted Protein Size:</b>	104.3 kDa
<b>Gene Name:</b>	ERCC excision repair 4, endonuclease catalytic subunit
<b>Database Link:</b>	<a href="#">NP_005227</a> <a href="#">Entrez Gene 50505</a> <a href="#">MouseEntrez Gene 304719</a> <a href="#">RatEntrez Gene 479842</a> <a href="#">DogEntrez Gene 712641</a> <a href="#">MonkeyEntrez Gene 2072</a> <a href="#">Human Q92889</a>



[View online »](#)

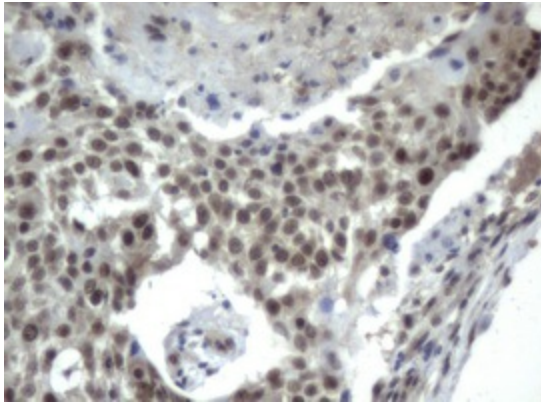
**Background:** The protein encoded by this gene forms a complex with ERCC1 and is involved in the 5' incision made during nucleotide excision repair. This complex is a structure specific DNA repair endonuclease that interacts with EME1. Defects in this gene are a cause of xeroderma pigmentosum complementation group F (XP-F), or xeroderma pigmentosum VI (XP6).

**Synonyms:** ERCC11; FANCC; RAD1; XFEPS; XPF

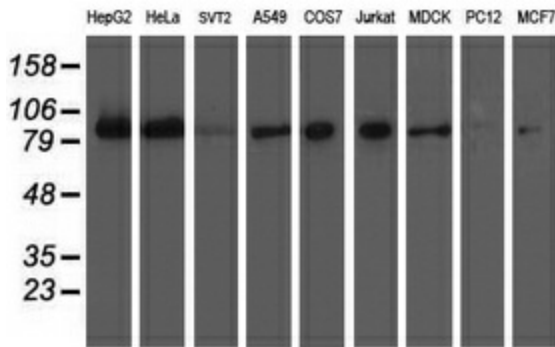
**Protein Families:** Druggable Genome

**Protein Pathways:** Nucleotide excision repair

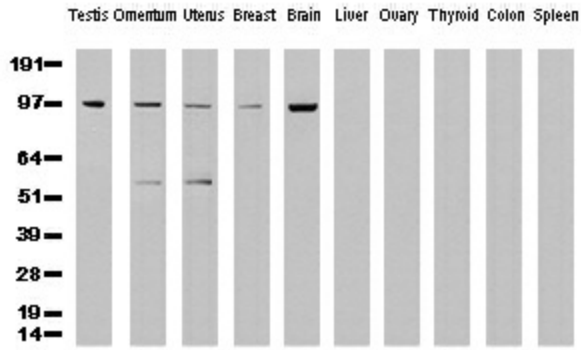
**Product images:**



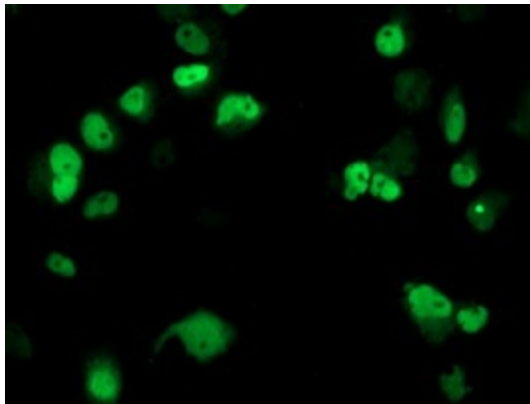
Immunohistochemical staining of paraffin-embedded Carcinoma of lung tissue using anti-XPF (UMAB21) mouse monoclonal antibody. ([UM500021], Dilution 1:50; heat-induced epitope retrieval by 10mM citric buffer, pH6.0, 120°C for 3min)



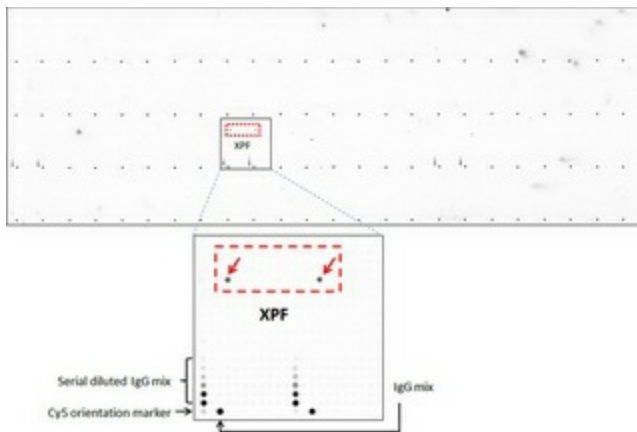
Western blot analysis of crude cell extracts (35ug) from 9 different cell lines by using anti-XPF (UMAB21) monoclonal antibody.



Western Blot analysis of 10 different human tissue lysates (10ug) by using anti-XPF monoclonal antibody (clone UMAB21, 1:500)



Anti-XPF (UMAB21) mouse monoclonal antibody ([UM500021]) immunofluorescent staining of COS7 cells transiently transfected by pCMV6-ENTRY XPF ([RC223300]).



OriGene overexpression protein microarray chip was immunostained with UltraMAB anti-XPF mouse monoclonal antibody (clone UMAB21). The positive reactive proteins are highlighted with two red arrows in the enlarged subarray. All the positive controls spotted in this subarray are also labeled for clarification. These data show that UltraMAB anti-XPF (UMAB21) very specifically recognizes XPF antigen on OriGene protein microarray chip.