

Product datasheet for **UM500017CF**

MEF2C Mouse Monoclonal Antibody [Clone ID: UMAB17]

Product data:

Product Type:	Primary Antibodies
Clone Name:	UMAB17
Applications:	IF, IHC
Recommended Dilution:	WB 1:2000, IHC 1:150
Reactivity:	Human, Mouse, Rat
Host:	Mouse
Isotype:	IgG2b
Clonality:	Monoclonal
Immunogen:	Full length human recombinant protein of human MEF2C(NP_002388) produced in HEK293T cell.
Formulation:	Lyophilized powder (original buffer 1X PBS, pH 7.3, 8% trehalose)
Reconstitution Method:	For reconstitution, we recommend adding 100uL distilled water to a final antibody concentration of about 1 mg/mL. To use this carrier-free antibody for conjugation experiment, we strongly recommend performing another round of desalting process. (OriGene recommends Zeba Spin Desalting Columns, 7KMWCO from Thermo Scientific)
Purification:	Purified from mouse ascites fluids or tissue culture supernatant by affinity chromatography (protein A/G)
Conjugation:	Unconjugated
Storage:	Store at -20°C as received.
Stability:	Stable for 12 months from date of receipt.
Predicted Protein Size:	51 kDa
Gene Name:	myocyte enhancer factor 2C
Database Link:	NP_002388 Entrez Gene 17260 Mouse Entrez Gene 499497 Rat Entrez Gene 4208 Human Q06413



[View online »](#)

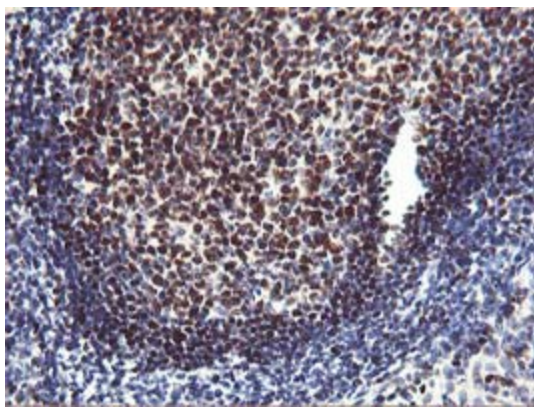
Background: This locus encodes a member of the MADS box transcription enhancer factor 2 (MEF2) family of proteins, which play a role in myogenesis. The encoded protein, MEF2 polypeptide C, has both trans-activating and DNA binding activities. This protein may play a role in maintaining the differentiated state of muscle cells. Mutations and deletions at this locus have been associated with severe mental retardation, stereotypic movements, epilepsy, and cerebral malformation. Alternatively spliced transcript variants have been described. [provided by RefSeq]

Synonyms: C5DELq14.3; DEL5q14.3

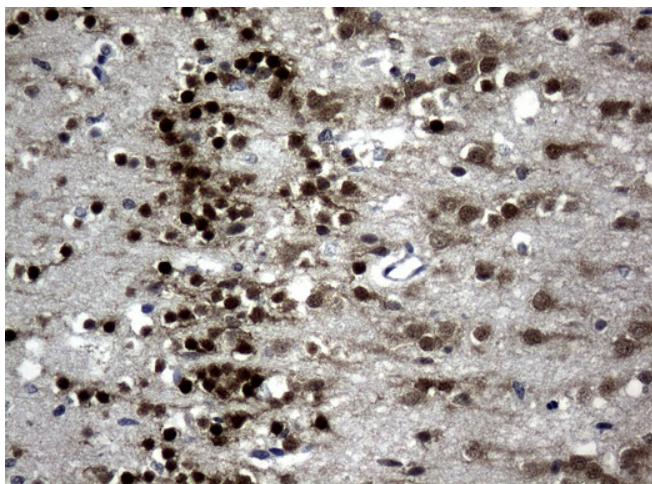
Protein Families: Transcription Factors

Protein Pathways: MAPK signaling pathway

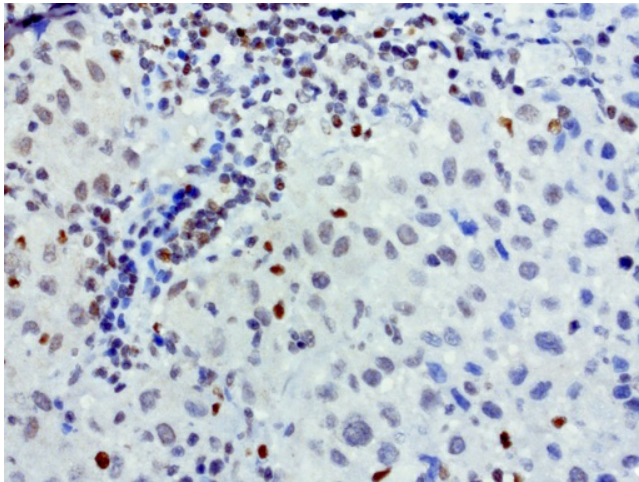
Product images:



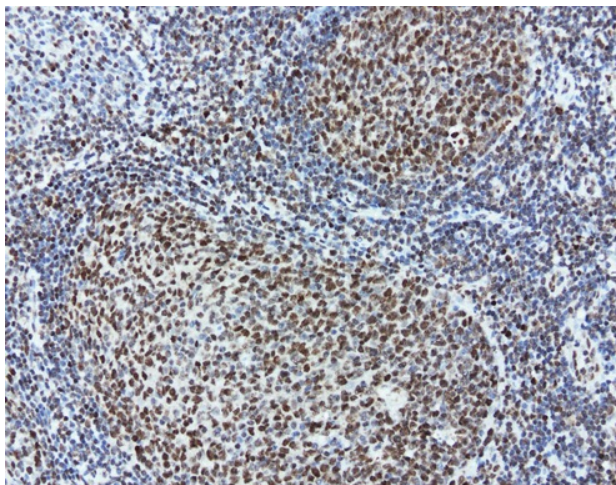
Immunohistochemical staining of paraffin-embedded Human Lymphoma tissue using anti-MEF2C mouse monoclonal antibody. (Clone UMAB17; heat-induced epitope retrieval by 10mM citric buffer, pH6.0, 120°C for 3min)



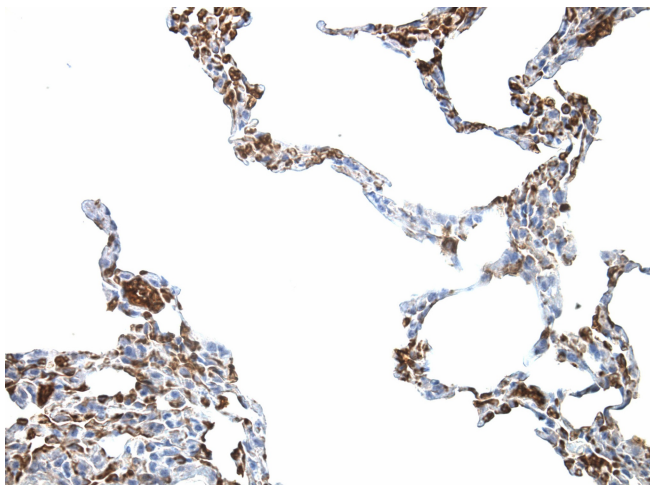
Immunohistochemical staining of paraffin-embedded Human embryonic brain tissue using anti-MEF2C mouse monoclonal antibody. (Clone UMAB17; heat-induced epitope retrieval by 10mM citric buffer, pH6.0, 120°C for 3min)



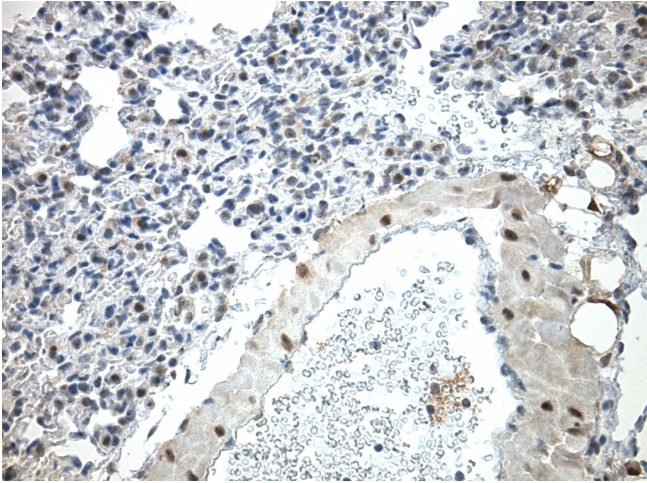
Immunohistochemical staining of paraffin-embedded human melanoma using anti-MEF2C clone UMAB17 mouse monoclonal antibody at 1:200 with Polink2 Broad HRP DAB detection kit ([UM500017]); heat-induced epitope retrieval with citrate buffer, pH6.0 at 95-100C. Nuclear staining seen in the infiltrating lymphocyte and weak staining in tumor cells.



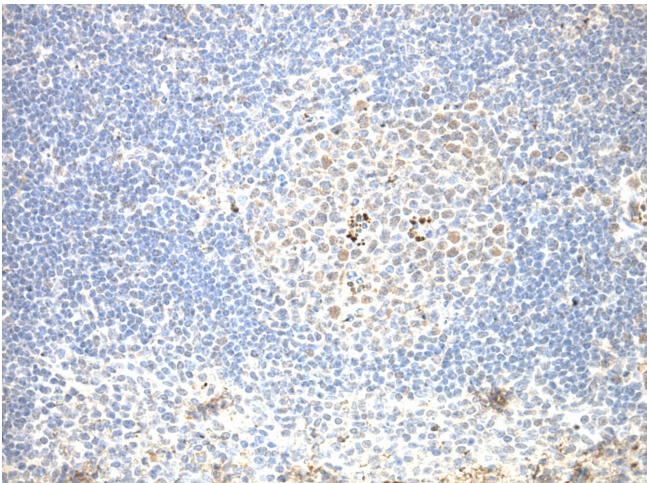
Immunohistochemical staining of paraffin-embedded human tonsil using anti-MEF2C clone UMAB17 mouse monoclonal antibody at 1:200 with Polink2 Broad HRP DAB detection kit ([UM500017]); heat-induced epitope retrieval with citrate buffer, pH6.0 at 95-100C. Nuclear staining seen in both the germinal and non germinal centers of the the tonsil



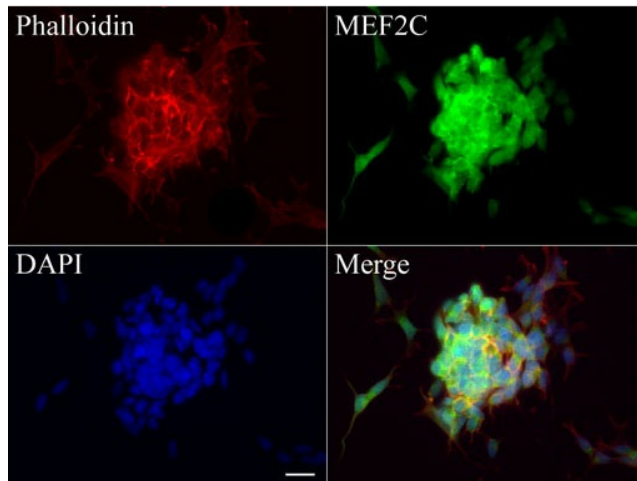
Immunohistochemical staining of paraffin-embedded mouse lung brochus tissue using anti-MEF2C clone UMAB17 mouse monoclonal antibody. HIER TEE buffer pH9 ([B21-100]) at 110C for 10 min, [UM500017] (1:100). Detection was done with Klear Mouse (C/N [D52-18]) DAB Kit.



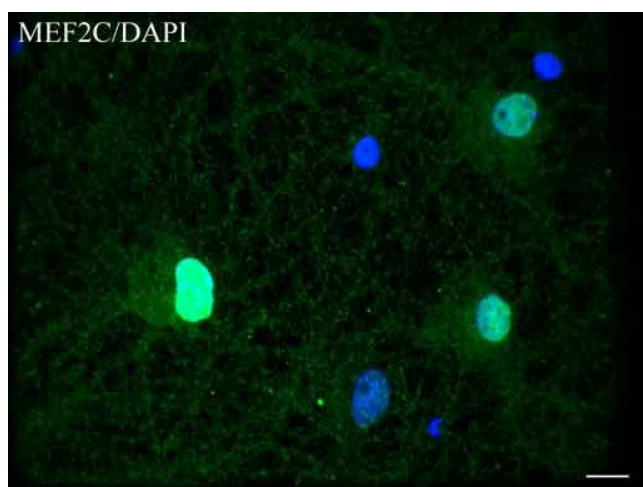
Immunohistochemical staining of paraffin-embedded mouse lung and smooth muscle of blood vessel tissue anti-MEF2C clone UMAB17 mouse monoclonal antibody. HIER TEE buffer pH9 ([B21-100]) at 110C for 10 min, [UM500017] (1:100). Detection was done with Klear Mouse (C/N [D52-18]) DAB Kit.



Immunohistochemical staining of paraffin-embedded mouse spleen tissue using anti-MEF2C clone UMAB17 mouse monoclonal antibody. HIER TEE buffer pH9 ([B21-100]) at 110C for 10 min, [UM500017] (1:100). Detection was done with Klear Mouse (C/N [D52-18]) DAB Kit.



Immunofluorescent staining of SH-SY5Y cells using anti-MEF2C mouse monoclonal antibody ([UM500017], green, 1:100). Actin filaments were labeled with Alexa Fluor® 594 Phalloidin (red), and nuclear with DAPI (blue). Scale bar, 20µm.



Confocal immunofluorescence image of primary rat neurons labeled with anti-MEF2C mouse monoclonal antibody (UM500017), green, 1:50 and with DAPI (blue) for nuclear. Scale bar, 10 μ m.