

## Product datasheet for **UM500016**

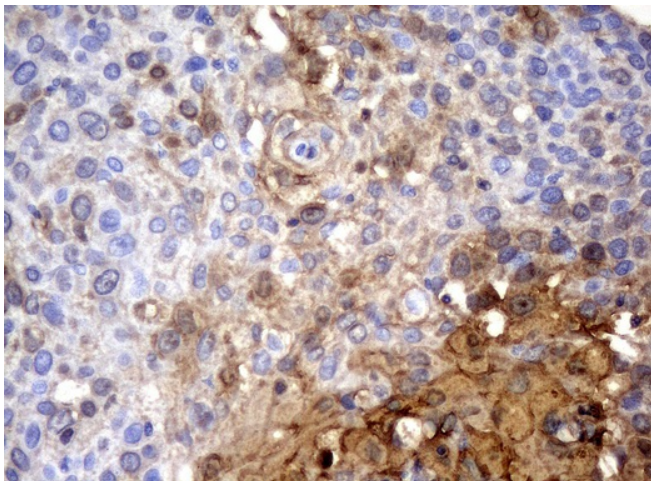
### **SERPINB4 Mouse Monoclonal Antibody [Clone ID: UMAB16]**

#### **Product data:**

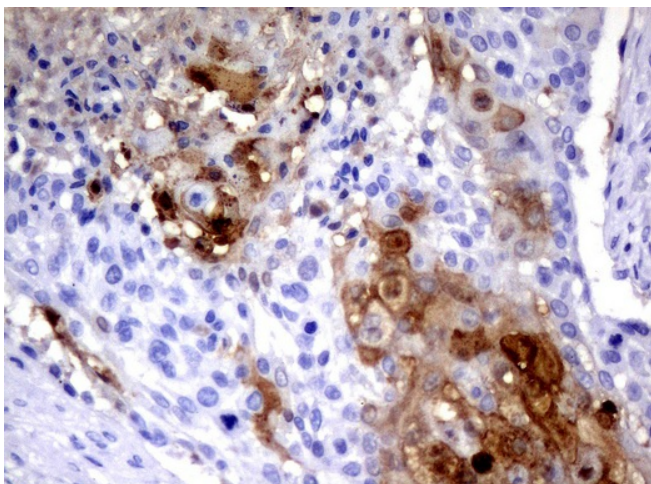
<b>Product Type:</b>	Primary Antibodies
<b>Clone Name:</b>	UMAB16
<b>Applications:</b>	10k-ChIP, IF, IHC, WB
<b>Recommended Dilution:</b>	WB 1:500, IHC 1:150, IF 1:100
<b>Reactivity:</b>	Human
<b>Host:</b>	Mouse
<b>Isotype:</b>	IgG1
<b>Clonality:</b>	Monoclonal
<b>Immunogen:</b>	Full length human recombinant protein of human SERPINB4 (NP_002965) produced in HEK293T cell.
<b>Formulation:</b>	PBS (pH 7.3) containing 1% BSA, 50% glycerol and 0.02% sodium azide.
<b>Concentration:</b>	0.5~1.0 mg/ml (Lot Dependent)
<b>Purification:</b>	Purified from mouse ascites fluids or tissue culture supernatant by affinity chromatography (protein A/G)
<b>Conjugation:</b>	Unconjugated
<b>Storage:</b>	Store at -20°C as received.
<b>Stability:</b>	Stable for 12 months from date of receipt.
<b>Predicted Protein Size:</b>	44.7 kDa
<b>Gene Name:</b>	serpin family B member 4
<b>Database Link:</b>	<a href="#">NP_002965</a> <a href="#">Entrez Gene 6318 Human</a> <a href="#">P48594</a>
<b>Background:</b>	SERPINB4 is also called squamous cell carcinoma antigen 2 (SCCA-2) or leupin. It directly inhibits human granzyme proteolytic activity and that overexpression of SERPINB4 in HeLa cells inhibits recombinant granzyme-induced as well as NK cell-mediated cell death.
<b>Synonyms:</b>	LEUPIN; PI11; SCCA-2; SCCA1; SCCA2
<b>Protein Families:</b>	Druggable Genome, Secreted Protein



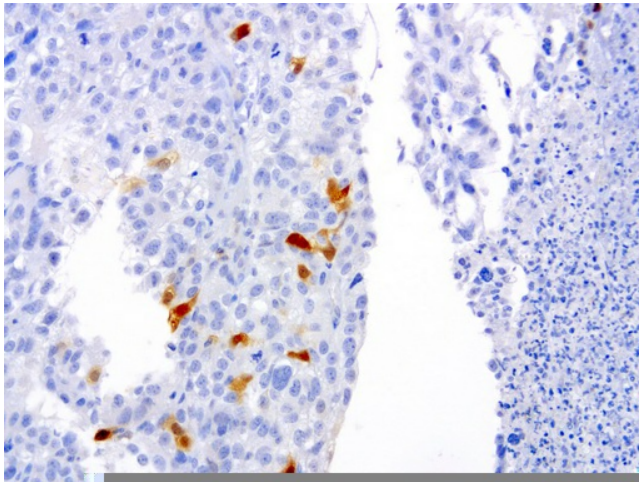
[View online »](#)

**Product images:**

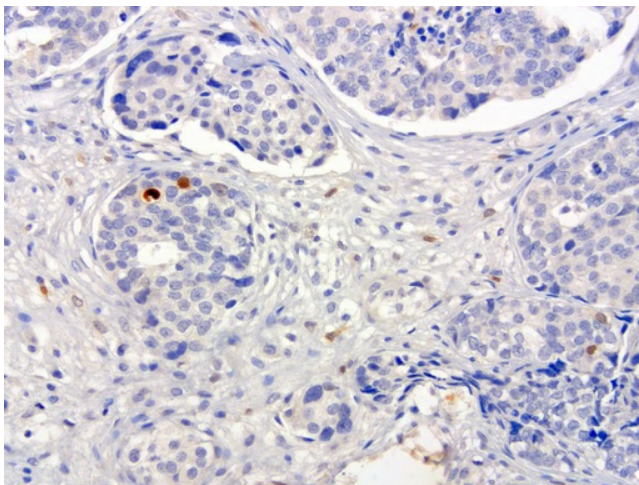
Immunohistochemical staining of paraffin-embedded Carcinoma of bladder tissue using anti-SERPINB4 mouse monoclonal antibody. (Clone UMAB16, dilution 1:100; heat-induced epitope retrieval by 10mM citric buffer, pH6.0, 120°C for 3min)



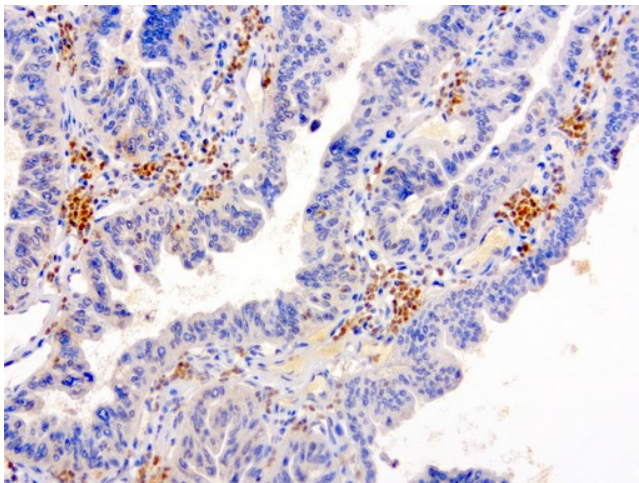
Immunohistochemical staining of paraffin-embedded Carcinoma of lung tissue using anti-SERPINB4 mouse monoclonal antibody. (Clone UMAB16, dilution 1:100; heat-induced epitope retrieval by 10mM citric buffer, pH6.0, 120°C for 3min)



Immunohistochemical staining of paraffin-embedded human endometrial carcinoma using anti-SERPINB4 clone UMAB16 mouse monoclonal antibody (UM500016) at 1:100 with Polink2 Broad HRP DAB detection kit; heat-induced epitope retrieval with GBI Accel pH8.7 HIER buffer using pressure chamber for 3 minutes at 110C. Cytoplasmic and membrane staining is seen in tumor cells.

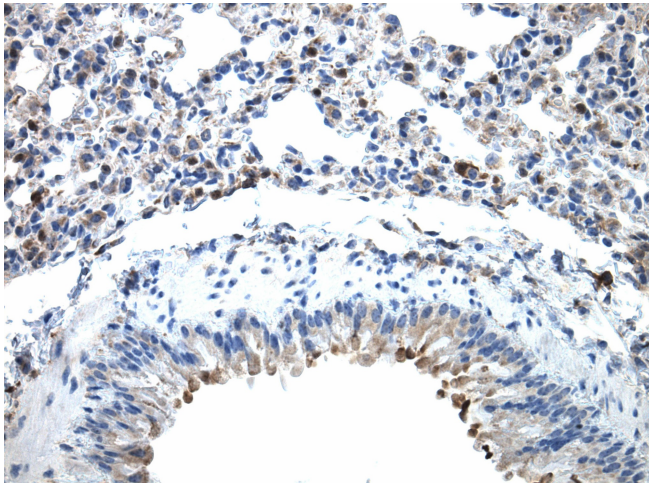


Immunohistochemical staining of paraffin-embedded human ovarian carcinoma using anti-SERPINB4 clone UMAB16 mouse monoclonal antibody (UM500016) at 1:100 with Polink2 Broad HRP DAB detection kit; heat-induced epitope retrieval with GBI Accel pH8.7 HIER buffer using pressure chamber for 3 minutes at 110C. Cytoplasmic and membrane staining is seen in tumor cells.

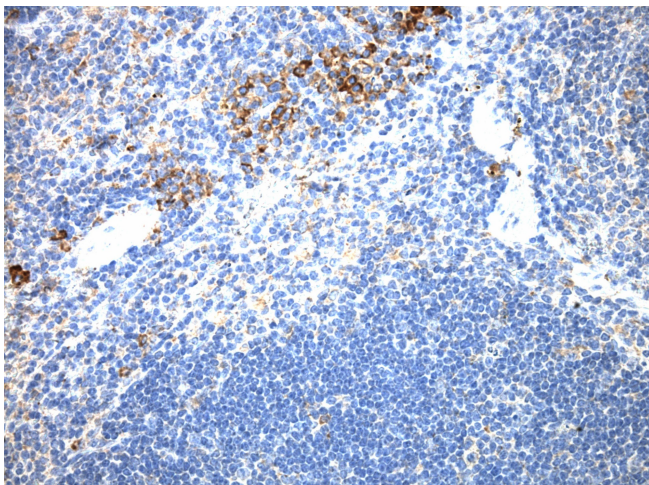


Immunohistochemical staining of paraffin-embedded human gastric carcinoma using anti-SERPINB4 clone UMAB16 mouse monoclonal antibody (UM500016) at 1:100 with Polink2 Broad HRP DAB detection kit; heat-induced epitope retrieval with GBI Accel pH8.7 HIER buffer using pressure chamber for 3 minutes at 110C. Cytoplasmic and membrane staining is seen in tumor cells.

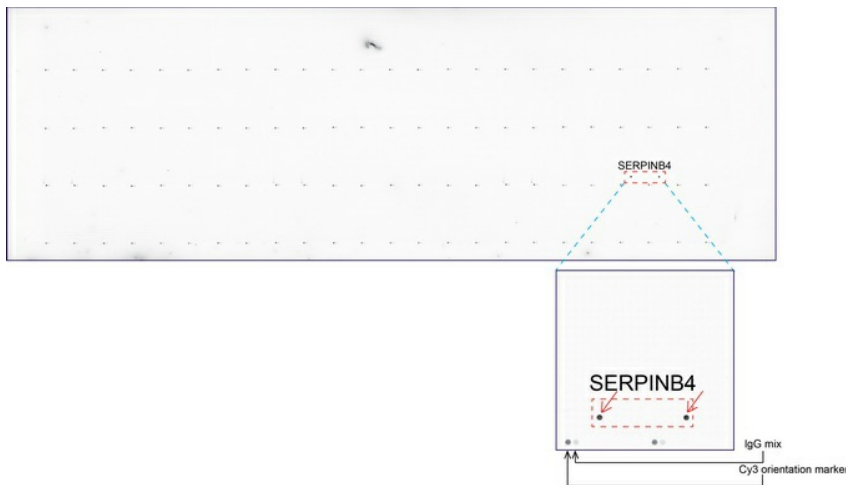




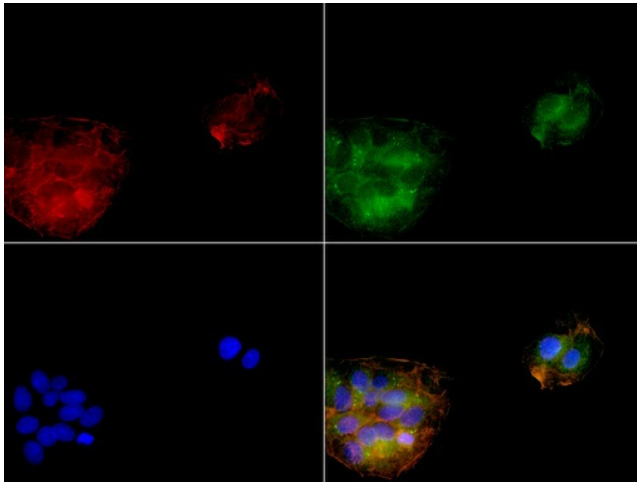
Immunohistochemical staining of paraffin-embedded mouse lung tissue using anti-SERPINB4 clone UMAB16 mouse monoclonal antibody. HIER TEE buffer pH9 ([B21-100]) at 110C for 10 min, UM500016 (1:100). Detection was done with Klear Mouse (C/N [D52-18]) DAB Kit.



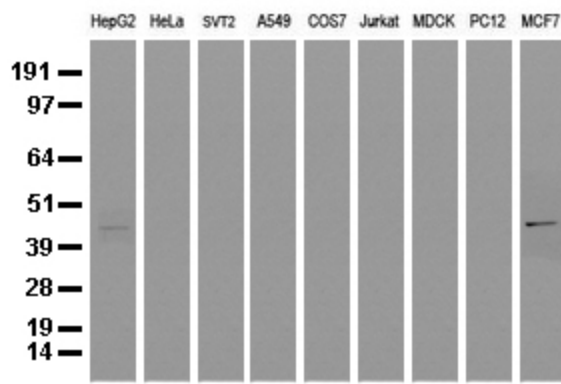
Immunohistochemical staining of paraffin-embedded mouse spleen tissue using anti-SERPINB4 clone UMAB16 mouse monoclonal antibody. HIER TEE buffer pH9 ([B21-100]) at 110C for 10 min, UM500016 (1:100). Detection was done with Klear Mouse (C/N [D52-18]) DAB Kit.



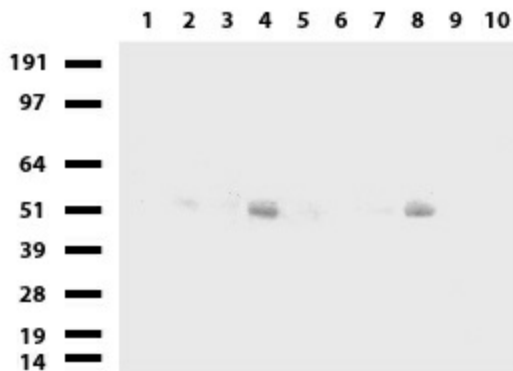
OriGene overexpression protein microarray chip was immunostained with UltraMAB anti-SERPINB4 mouse monoclonal antibody (Clone UMAB16). The positive reactive proteins are highlighted with two red arrows in the enlarged subarray. All the positive controls spotted in this subarray are also labeled for clarification. These data show that UltraMAB anti-SERPINB4 (Clone UMAB16) very specifically recognizes SERPINB4 antigen on OriGene protein microarray chip.



Immunofluorescent staining of HepG2 cells using SERPINB4 mouse monoclonal antibody (UM500016, green). Actin filaments were labeled with TRITC-phalloidin (red), and nuclear with DAPI (blue). The three-color overlay image is located at the bottom-right corner.



Western blot analysis of extracts (35ug) from 9 different cell lines by using anti-SERPINB4 monoclonal antibody (Clone UMAB16) at 1:500.



Western blot of human tissue lysates (15ug) from 10 different tissues (1: Testis, 2: Omentum, 3: Uterus, 4: Breast, 5: Brain, 6: Liver, 7: Ovary, 8: Thyroid, 9: Colon, 10: Spleen). Dilution: 1:1000.