

## Product datasheet for **UM500007CF**

### **BubR1 (BUB1B) Mouse Monoclonal Antibody [Clone ID: UMAB7]**

#### **Product data:**

<b>Product Type:</b>	Primary Antibodies
<b>Clone Name:</b>	UMAB7
<b>Applications:</b>	IF, IHC, WB
<b>Recommended Dilution:</b>	WB 1:2000, IHC 1:50, IF 1:100, Flow 1:100, IF 1:100
<b>Reactivity:</b>	Human, Monkey
<b>Host:</b>	Mouse
<b>Isotype:</b>	IgG1
<b>Clonality:</b>	Monoclonal
<b>Immunogen:</b>	Protein expressed in 293T cell transfected with human BUB1B expression vector
<b>Formulation:</b>	Lyophilized powder (original buffer 1X PBS, pH 7.3, 8% trehalose)
<b>Reconstitution Method:</b>	For reconstitution, we recommend adding 100uL distilled water to a final antibody concentration of about 1 mg/mL. To use this carrier-free antibody for conjugation experiment, we strongly recommend performing another round of desalting process. (OriGene recommends Zeba Spin Desalting Columns, 7KMWCO from Thermo Scientific)
<b>Purification:</b>	Purified from mouse ascites fluids or tissue culture supernatant by affinity chromatography (protein A/G)
<b>Conjugation:</b>	Unconjugated
<b>Storage:</b>	Store at -20°C as received.
<b>Stability:</b>	Stable for 12 months from date of receipt.
<b>Predicted Protein Size:</b>	119.5 kDa
<b>Gene Name:</b>	BUB1 mitotic checkpoint serine/threonine kinase B
<b>Database Link:</b>	<a href="#">NP_001202</a> <a href="#">Entrez Gene 100423079 Monkey</a> <a href="#">Entrez Gene 701 Human</a> <a href="#">O60566</a>



[View online »](#)

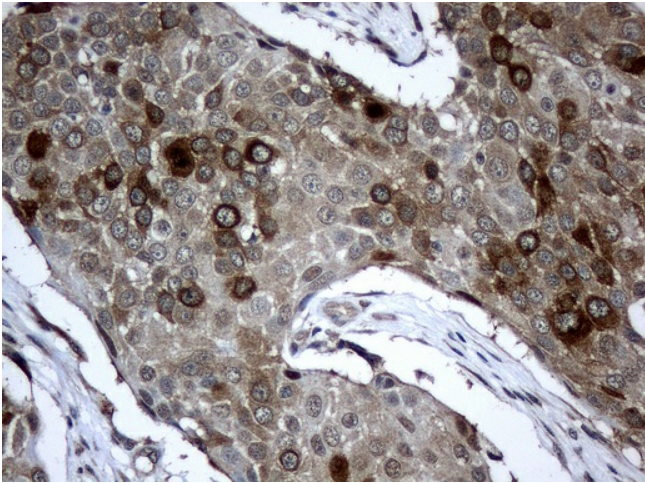
**Background:** This gene encodes a kinase involved in spindle checkpoint function. The protein has been localized to the kinetochore and plays a role in the inhibition of the anaphase-promoting complex/cyclosome(APC/C), delaying the onset of anaphase and ensuring proper chromosome segregation. Impaired spindle checkpoint function has been found in many forms of cancer.

**Synonyms:** Bub1A; BUB1beta; BUBR1; hBUBR1; MAD3L; MVA1; SSK1

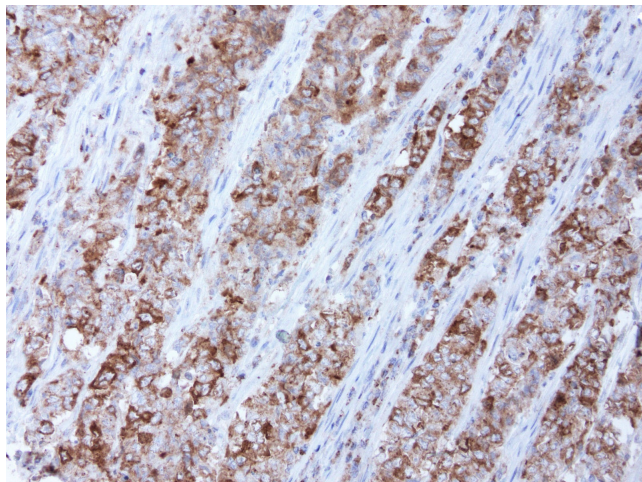
**Protein Families:** Druggable Genome, Protein Kinase, Stem cell - Pluripotency

**Protein Pathways:** Cell cycle

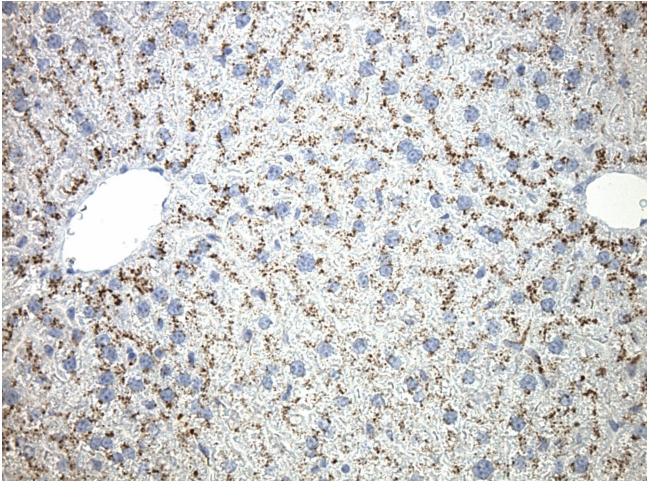
### Product images:



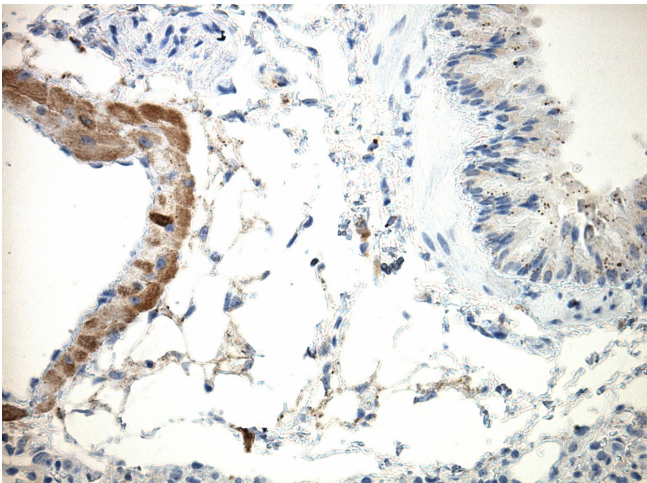
Immunohistochemical staining of paraffin-embedded Carcinoma of lung tissue using anti-BUB1B mouse monoclonal antibody. (Clone UMAB7, dilution 1:100; heat-induced epitope retrieval by 10mM citric buffer, pH6.0, 120°C for 3min)



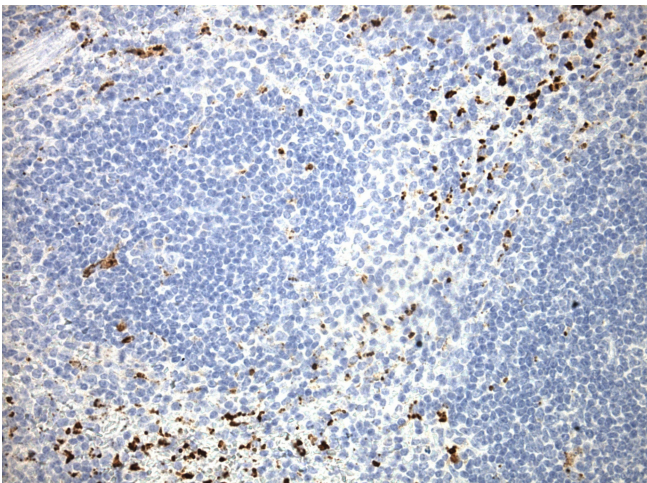
Immunohistochemical staining of paraffin-embedded human endometrial carcinoma using anti-BUB1B mouse monoclonal antibody. Heat-induced epitope retrieval by ACCEL (pH8.7) in pressure chamber/cooker at 110°C for 3min, [UM50007] clone UMAB7 at 1:250. Images shows tumor cells with strong cytoplasmic staining.



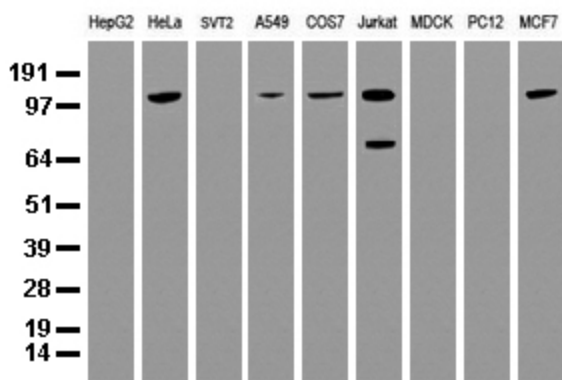
Immunohistochemical staining of paraffin-embedded mouse liver tissue using anti-BUB1B clone UMAB7 mouse monoclonal antibody. HIER TEE buffer pH9 ([B21-100]) at 110C for 10 min, [UM500007] (1:100). Detection was done with Klear Mouse (C/N [D52-18]) DAB Kit.



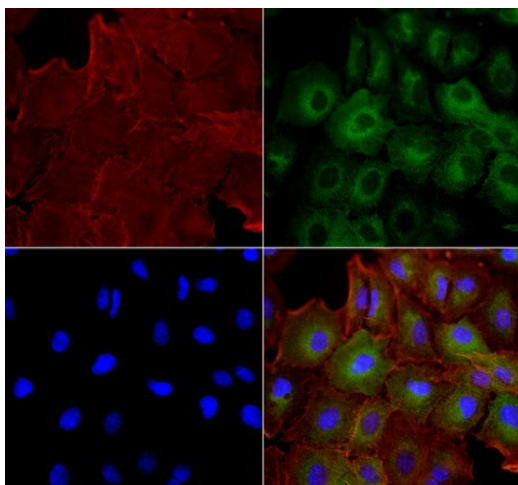
Immunohistochemical staining of paraffin-embedded mouse lung tissue using anti-BUB1B clone UMAB7 mouse monoclonal antibody. HIER TEE buffer pH9 ([B21-100]) at 110C for 10 min, [UM500007] (1:100). Detection was done with Klear Mouse (C/N [D52-18]) DAB Kit.



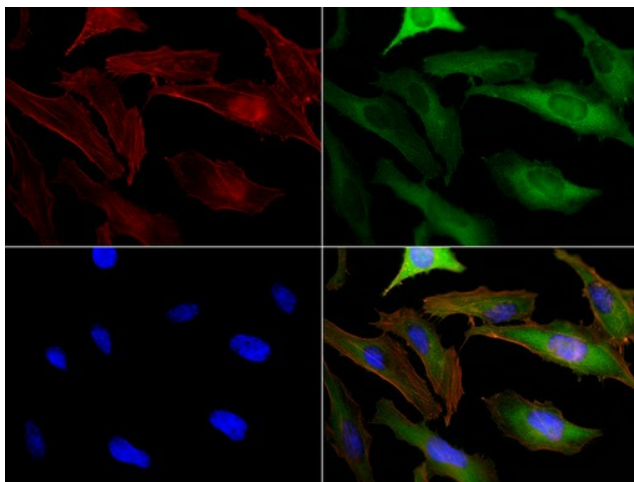
Immunohistochemical staining of paraffin-embedded mouse spleen tissue using anti-BUB1B clone UMAB7 mouse monoclonal antibody. HIER TEE buffer pH9 ([B21-100]) at 110C for 10 min, [UM500007] (1:100). Detection was done with Klear Mouse (C/N [D52-18]) DAB Kit.



Western blot analysis of extracts (35ug) from 9 different cell lines by using anti-BUB1B monoclonal antibody (Clone UMAB7) at 1:500.



Immunofluorescent staining of A549 cells using anti-BUB1B mouse monoclonal antibody ([UM500007], green). Actin filaments were labeled with TRITC-phalloidin (red), and nuclear with DAPI (blue). The three-color overlay image is located at the bottom-right corner.



Immunofluorescent staining of HeLa cells using anti-BUB1B mouse monoclonal antibody ([UM500007], green). Actin filaments were labeled with TRITC-phalloidin (red), and nuclear with DAPI (blue). The three-color overlay image is located at the bottom-right corner.