

Product datasheet for **UM500001CF**

Cytokeratin 8 (KRT8) Mouse Monoclonal Antibody [Clone ID: UMAB1]

Product data:

Product Type:	Primary Antibodies
Clone Name:	UMAB1
Applications:	10k-ChIP, IF, IHC, WB
Recommended Dilution:	WB 1:500~1000, IHC 1:50, IF 1:50~100
Reactivity:	Human, Monkey, Mouse, Rat
Host:	Mouse
Isotype:	IgG1
Clonality:	Monoclonal
Immunogen:	Human recombinant protein fragment corresponding to amino acids 91-381 of human CK8 (NP_002264) produced in E.coli.
Formulation:	Lyophilized powder (original buffer 1X PBS, pH 7.3, 8% trehalose)
Reconstitution Method:	For reconstitution, we recommend adding 100uL distilled water to a final antibody concentration of about 1 mg/mL. To use this carrier-free antibody for conjugation experiment, we strongly recommend performing another round of desalting process. (OriGene recommends Zeba Spin Desalting Columns, 7KMWCO from Thermo Scientific)
Purification:	Purified from mouse ascites fluids or tissue culture supernatant by affinity chromatography (protein A/G)
Conjugation:	Unconjugated
Storage:	Store at -20°C as received.
Stability:	Stable for 12 months from date of receipt.
Predicted Protein Size:	53.5 kDa
Gene Name:	keratin 8
Database Link:	NP_002264 Entrez Gene 16691 Mouse Entrez Gene 25626 Rat Entrez Gene 3856 Human P05787

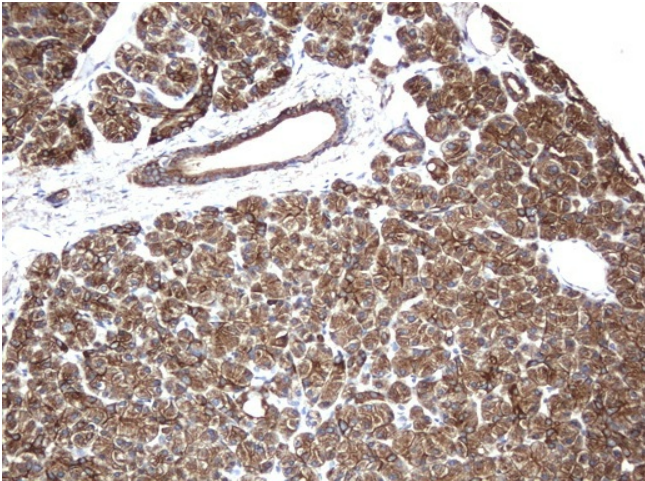
[View online »](#)

Background: Keratin 8 is a member of the type II keratin family clustered on the long arm of chromosome 12. Type I and type II keratins heteropolymerize to form intermediate-sized filaments in the cytoplasm of epithelial cells. The product of this gene typically dimerizes with keratin 18 to form an intermediate filament in simple single-layered epithelial cells. This protein plays a role in maintaining cellular structural integrity and also functions in signal transduction and cellular differentiation. Mutations in this gene cause cryptogenic cirrhosis.

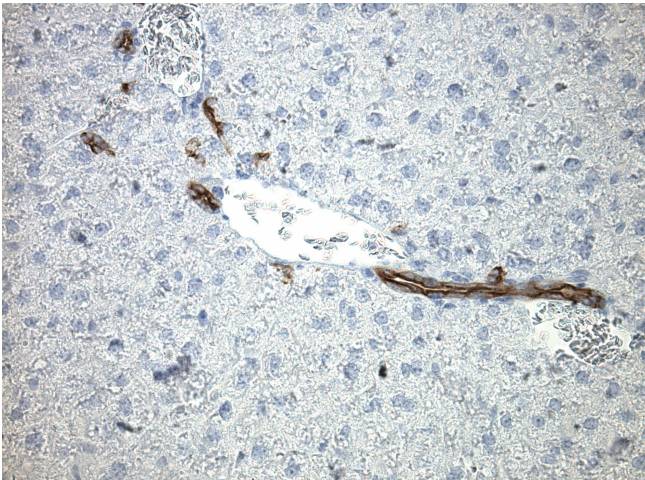
Synonyms: CARD2; CK-8; CK8; CYK8; K2C8; K8; KO

Protein Families: Druggable Genome

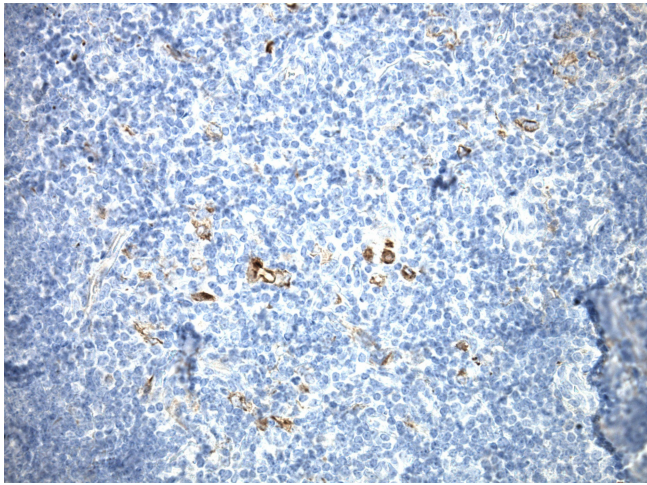
Product images:



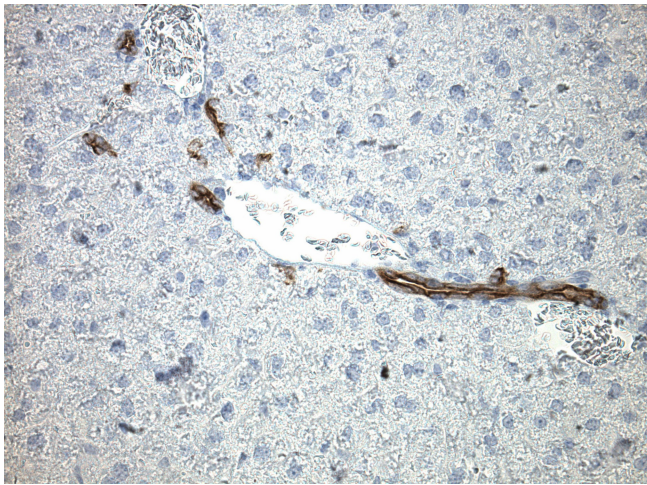
Immunohistochemical staining of paraffin-embedded pancreas tissue using anti-KRT8 mouse monoclonal antibody. (Clone UMAB1, dilution 1:100; heat-induced epitope retrieval by 10mM citric buffer, pH6.0, 120°C for 3min)



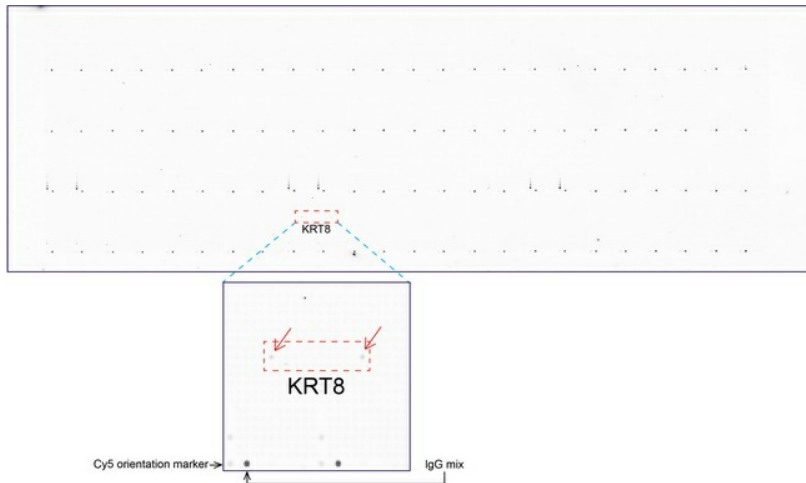
Immunohistochemical staining of paraffin-embedded mouse liver tissue using anti-KRT8 (CYTOKERATIN 8) clone UMAB1 mouse monoclonal antibody. HIER ACCEL buffer ([B22C-125]) (pH8.7) at 110C for 10 min, [UM500001] (1:100). Detection was done with Klear Mouse (C/N [D52-18]) DAB Kit.



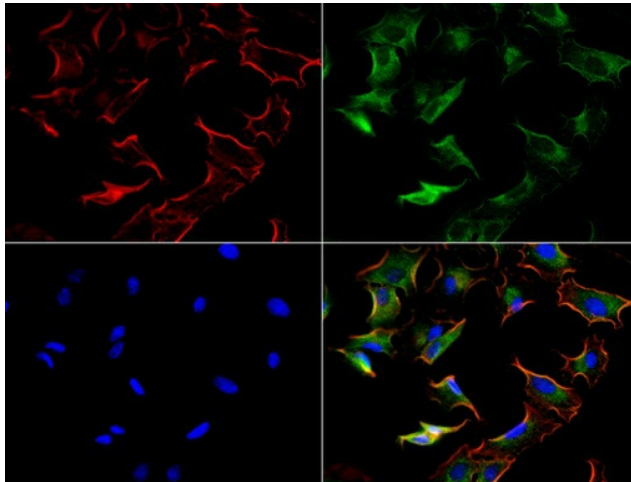
Immunohistochemical staining of paraffin-embedded mouse spleen tissue using anti-KRT8 (CYTOKERATIN 8) clone UMAB1 mouse monoclonal antibody. HIER ACCEL buffer ([B22C-125]) (pH8.7) at 110C for 10 min, [UM500001] (1:100). Detection was done with Klear Mouse (C/N [D52-18]) DAB Kit.



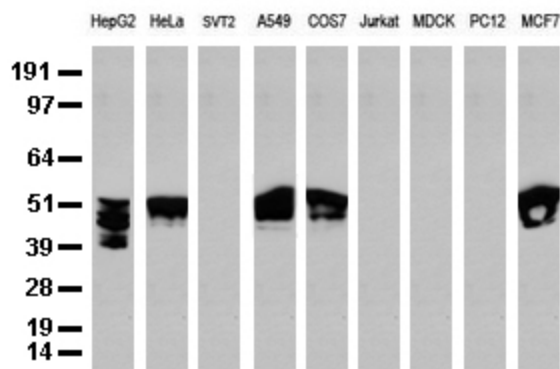
Immunohistochemical staining of paraffin-embedded mouse liver tissue using anti-KRT8 (CYTOKERATIN 8) clone UMAB1 mouse monoclonal antibody. HIER TEE buffer pH9 ([B21-100]) at 110C for 10 min, [UM500001] (1:100). Detection was done with Klear Mouse (C/N [D52-18]) DAB Kit.



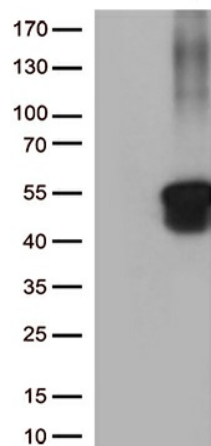
OriGene overexpression protein microarray chip was immunostained with UltraMAB anti-KRT8 mouse monoclonal antibody (Clone UMAB1). The positive reactive proteins are highlighted with two red arrows in the enlarged subarray. All the positive controls spotted in this subarray are also labeled for clarification. These data show that UltraMAB anti-KRT8 (Clone UMAB1) very specifically recognizes KRT8 antigen on OriGene protein microarray chip.



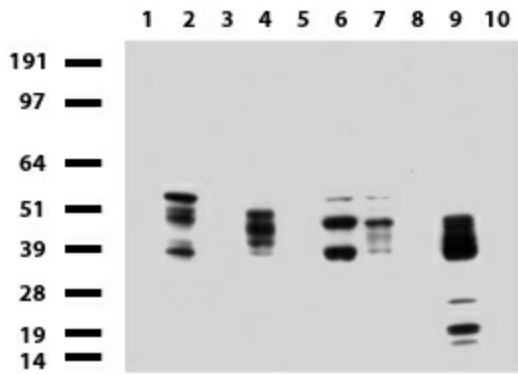
Immunofluorescent staining of A549 cells using anti-CK8 mouse monoclonal antibody ([UM500001], green). Actin filaments were labeled with TRITC-phalloidin (red), and nuclear with DAPI (blue). The three-color overlay image is located at the bottom-right corner.



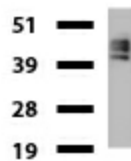
Western blot analysis of extracts (35ug) from 9 different cell lines by using anti-KRT8 monoclonal antibody (Clone UMAB1) at 1:500.



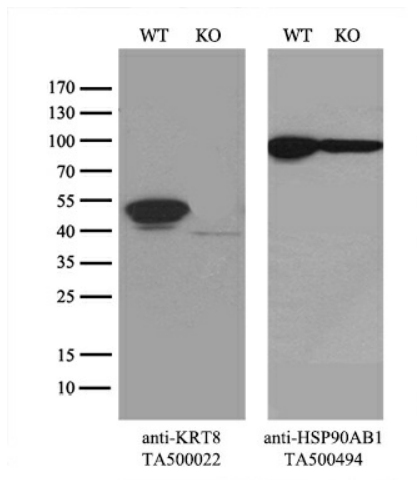
HEK293T cells were transfected with the pCMV6-ENTRY control (Left lane) or pCMV6-ENTRY KRT8 ([RC209570], Right lane) cDNA for 48 hrs and lysed. Equivalent amounts of cell lysates (5 ug per lane) were separated by SDS-PAGE and immunoblotted with anti-KRT8 (1:500).



Western blot of human tissue lysates (15ug) from 10 different tissues (1: Testis, 2: Omentum, 3: Uterus, 4: Breast, 5: Brain, 6: Liver, 7: Ovary, 8: Thyroid, 9: Colon, 10: Spleen). Dilution: 1:500.



Western blot of mouse tissue lysates (20ug) from Colon. Primary antibody dilution: 1:500. Secondary antibody dilution: Mouse TrueBlot® Ultra (1:1000).



Equivalent amounts of cell lysates (10 ug per lane) of wild-type HeLa cells (WT, Cat# LC810HELA) and KRT8-Knockout HeLa cells (KO, Cat# [LC810123]) were separated by SDS-PAGE and immunoblotted with anti-KRT8 monoclonal antibody [UM500001], (1:2000). Then the blotted membrane was stripped and reprobed with anti-HSP90AB1 antibody ([TA500494]) as a loading control.