

Product datasheet for **TS424141P5**

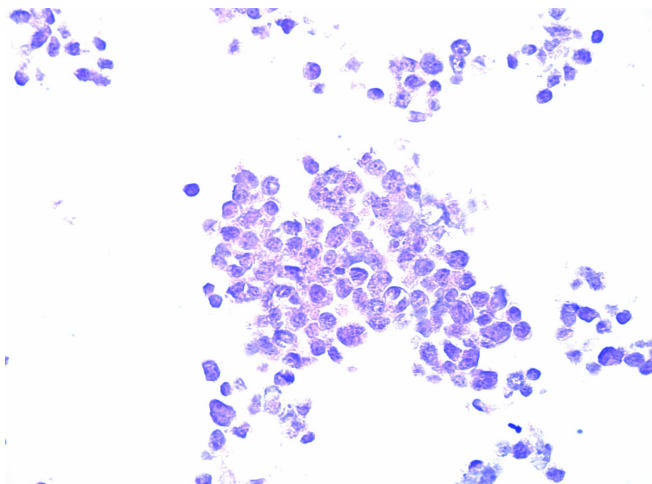
PD L2 (PDCD1LG2) CytoSection

Product data:

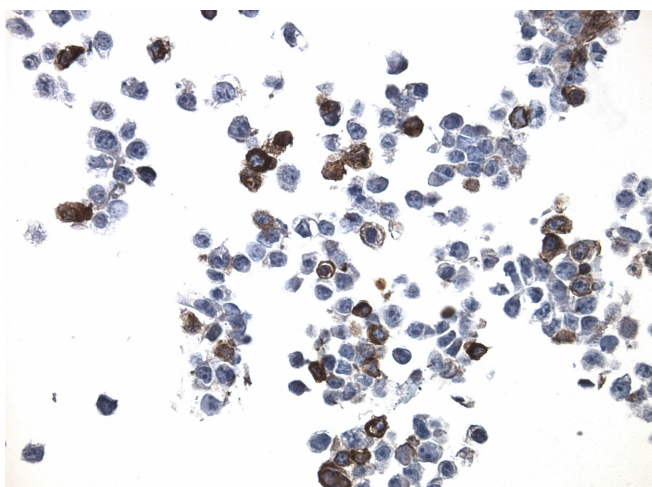
| | |
|---------------------------------------|---|
| Product Type: | CytoSections |
| Description: | Transient overexpression of PDCD1LG2 in HEK293T cells, FFPE control for IHC, ICC and ISH staining, 25 slides per pack |
| Species: | Human |
| Expression Host: | HEK293T |
| Expression cDNA Clone or AA Sequence: | TrueORF Clone RC224141 |
| Tag: | C-MYC/DDK |
| Detection Antibodies: | Clone OTI4C5, Anti-DDK (FLAG) monoclonal antibody (TA50011-100) |
| Target Detection Antibodies: | PD L2 (PDCD1LG2) Mouse Monoclonal Antibody [Clone ID: OTI8G8] (TA806581) |
| ACCN: | NM_025239 , NP_079515 |
| Synonyms: | B7DC; bA574F11.2; Btdc; CD273; PD-L2; PDCD1L2; PDL2 |
| Storage: | Room Temperature |
| Stability: | Slides are guaranteed for a year from the date of receipt if proper storage instructions were followed. |
| Preparation: | HEK293T cells were transiently transfected with TrueORF cDNA plasmid. Transfected cells were cultured for 48hrs. After harvesting, the cultured cells were fixed in formalin & dehydrated before embedding in paraffin. 5 µm sections of the FFPE cell pellet blocks are cut and mounted on positively charged SuperFrost slides. |
| Note: | This product is for research use only and is not approved for use in humans or in clinical diagnosis. |
| RefSeq: | NP_079515 |
| Locus ID: | 80380 |
| Cytogenetics: | 9p24.1 |
| Protein Families: | Transmembrane |
| Protein Pathways: | Cell adhesion molecules (CAMs) |



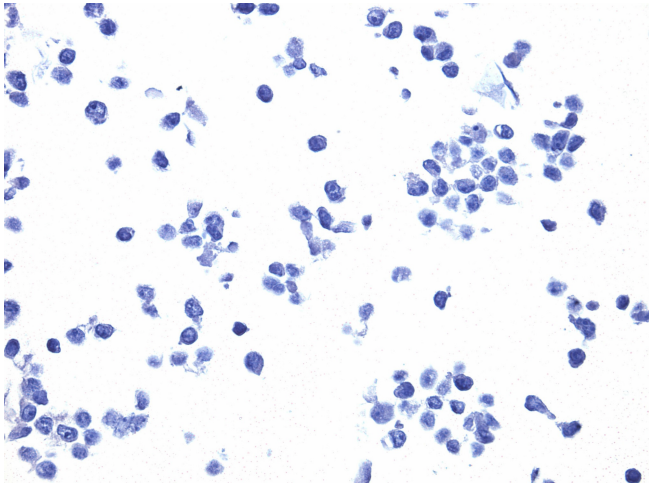
[View online »](#)

Product images:

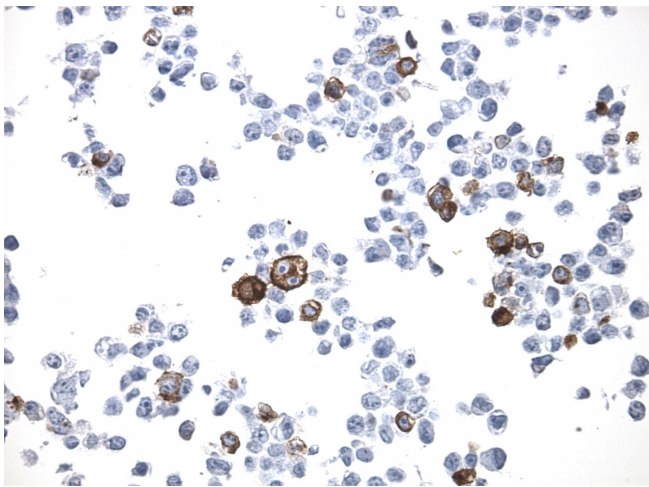
H&E staining of PD-L2 overexpressed cytosection ([TS424141]), HEK293T cells were transfected with cDNA clone [RC202141], 4um in thickness, 40x magnification



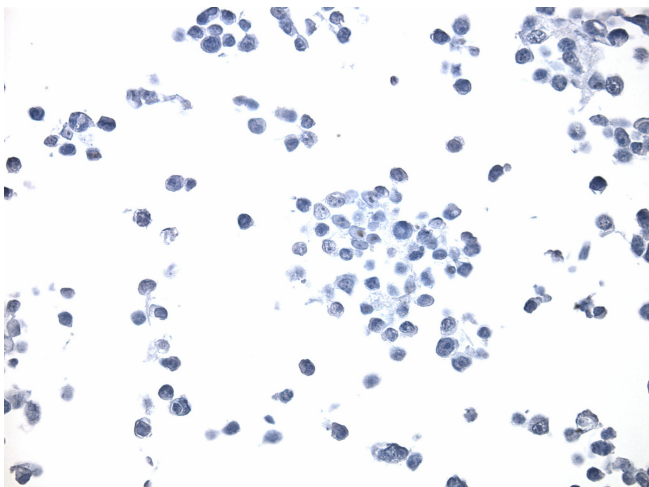
Immunohistology staining on PD-L2 overexpressed cytosection ([TS424141]) with mouse anti PD-L2 antibody ([UM800115]) at 1:200 dilution, 1hr room temperature. The staining was achieved with HIER Tris/EDTA buffer, pH9.0, 100oC for 20 min, Polink2 detection system ([D22-18]) with DAB chromogen. HEK293T cells were transfected with cDNA clone [RC202141], 4um sections, 40x magnification



Immunohistology staining of untransfected HEK293T with mouse anti PD-L2 antibody ([UM800115]) at 1:200 dilution, 1 hour at room temperature. The staining was conducted with HIER Tris/EDTA buffer, pH9.0, 100oC for 20 min, Polink2 detection system with DAB chromogen ([D22-18]). HEK293T cells were 4um sections, 40x magnification.



Immunohistology staining on PD-L2 overexpressed cytosection ([TS424141]) with mouse anti DDK clone 11C3 C/N [TA180144] at 1:1000 dilution 4C O/N. Antibody staining was achieved with HIER Tris/EDTA pH9 for 20minutes, Polink2 detection system with DAB chromogen ([D22-18]). Positive stain shown with the brown chromogen present. HEK293T cells were transfected with cDNA clone [RC202141], 4um sections, 40x magnification



Immunohistology staining on HEK293T untransfected control section screened with mouse anti-DDK clone 11C3 ([TA180144]) at 1:1000 dilution 4C O/N. Antibody staining was achieved with HIER Tris/EDTA pH9 for 20minutes, Polink2 detection system with DAB chromogen ([D22-18]). No brown chromogen showing negative stain.