

## Product datasheet for **TS420731P5**

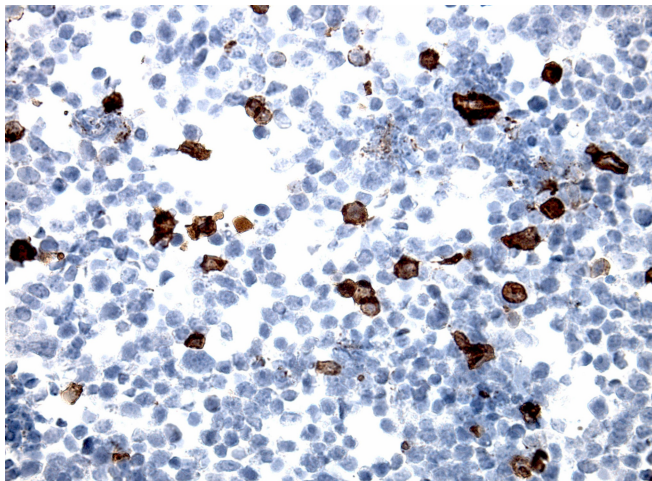
### E Cadherin (CDH1) CytoSection

#### Product data:

|  |   |
|--|---|
| <b>Product Type:</b>                         | CytoSections  |
| <b>Description:</b>                          | Transient overexpression of CDH1 in HEK293T cells, FFPE control for IHC, ICC and ISH staining, 25 slides per pack   |
| <b>Species:</b>                              | Human   |
| <b>Expression Host:</b>                      | HEK293T   |
| <b>Expression cDNA Clone or AA Sequence:</b> | TrueORF Clone RC220731  |
| <b>Tag:</b>                                  | C-MYC/DDK   |
| <b>Detection Antibodies:</b>                 | Clone OTI4C5, Anti-DDK (FLAG) monoclonal antibody (TA50011-100)   |
| <b>Target Detection Antibodies:</b>          | E Cadherin (CDH1) Mouse Monoclonal Antibody [Clone ID: OTI2F9] (TA800691)   |
| <b>ACCN:</b>                                 | <u><a href="#">NM_004360</a></u> , <u><a href="#">NP_004351</a></u>   |
| <b>Synonyms:</b>                             | Arc-1; BCDS1; CD324; CDHE; ECAD; LCAM; UVO  |
| <b>Storage:</b>                              | Room Temperature  |
| <b>Stability:</b>                            | Slides are guaranteed for a year from the date of receipt if proper storage instructions were followed.   |
| <b>Preparation:</b>                          | HEK293T cells were transiently transfected with TrueORF cDNA plasmid. Transfected cells were cultured for 48hrs. After harvesting, the cultured cells were fixed in formalin & dehydrated before embedding in paraffin. 5 µm sections of the FFPE cell pellet blocks are cut and mounted on positively charged SuperFrost slides. |
| <b>Note:</b>                                 | This product is for research use only and is not approved for use in humans or in clinical diagnosis.   |
| <b>RefSeq:</b>                               | <u><a href="#">NP_004351</a></u>  |
| <b>Locus ID:</b>                             | 999   |
| <b>Cytogenetics:</b>                         | 16q22.1   |
| <b>Protein Families:</b>                     | Druggable Genome, ES Cell Differentiation/IPS, Transmembrane  |
| <b>Protein Pathways:</b>                     | Adherens junction, Bladder cancer, Cell adhesion molecules (CAMs), Endometrial cancer, Melanoma, Pathogenic Escherichia coli infection, Pathways in cancer, Thyroid cancer  |



[View online »](#)

**Product images:**

Immunohistology staining on CDH1 overexpressed cytosection [TS420731] with mouse anti DDK clone OTI11C3 C/N [TA180144] at 1:400 dilution 4C O/N. Antibody staining was achieved with HIER Citrate pH6 , Polink1 with DAB chromogen detection kit ([D11-18]). Positive stain shown with the brown chromogen present. HEK293T cells were transfected with cDNA clone [RC220731] 5 micron sections, 40x magnification