

## Product datasheet for **TS420731**

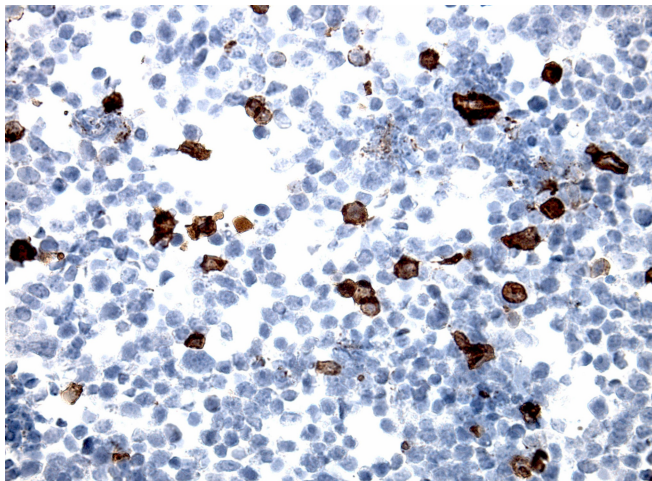
### E Cadherin (CDH1) CytoSection

#### Product data:

<b>Product Type:</b>	CytoSections
<b>Description:</b>	Transient overexpression of CDH1 in HEK293T cells, FFPE control for IHC, ICC and ISH staining, 25 slides per pack
<b>Species:</b>	Human
<b>Expression Host:</b>	HEK293T
<b>Expression cDNA Clone or AA Sequence:</b>	TrueORF Clone RC220731
<b>Tag:</b>	C-MYC/DDK
<b>Detection Antibodies:</b>	Clone OTI4C5, Anti-DDK (FLAG) monoclonal antibody (TA50011-100)
<b>Target Detection Antibodies:</b>	E Cadherin (CDH1) Mouse Monoclonal Antibody [Clone ID: OTI2F9] (TA800691)
<b>ACCN:</b>	<a href="#">NM_004360</a> , <a href="#">NP_004351</a>
<b>Synonyms:</b>	Arc-1; BCDS1; CD324; CDHE; ECAD; LCAM; UVO
<b>Storage:</b>	Room Temperature
<b>Stability:</b>	Slides are guaranteed for a year from the date of receipt if proper storage instructions were followed.
<b>Preparation:</b>	HEK293T cells were transiently transfected with TrueORF cDNA plasmid. Transfected cells were cultured for 48hrs. After harvesting, the cultured cells were fixed in formalin & dehydrated before embedding in paraffin. 5 µm sections of the FFPE cell pellet blocks are cut and mounted on positively charged SuperFrost slides.
<b>Note:</b>	This product is for research use only and is not approved for use in humans or in clinical diagnosis.
<b>RefSeq:</b>	<a href="#">NP_004351</a>
<b>Locus ID:</b>	999
<b>Cytogenetics:</b>	16q22.1
<b>Protein Families:</b>	Druggable Genome, ES Cell Differentiation/IPS, Transmembrane
<b>Protein Pathways:</b>	Adherens junction, Bladder cancer, Cell adhesion molecules (CAMs), Endometrial cancer, Melanoma, Pathogenic Escherichia coli infection, Pathways in cancer, Thyroid cancer



[View online »](#)

**Product images:**

Immunohistology staining on CDH1 overexpressed cytosection TS420731 with mouse anti DDK clone OT111C3 C/N [TA180144] at 1:400 dilution 4C O/N. Antibody staining was achieved with HIER Citrate pH6 , Polink1 with DAB chromogen detection kit ([D11-18]). Positive stain shown with the brown chromogen present. HEK293T cells were transfected with cDNA clone [RC220731] 5 micron sections, 40x magnification