

Product datasheet for **TS419855P5**

TGF beta Receptor II (TGFB2) CytoSection

Product data:

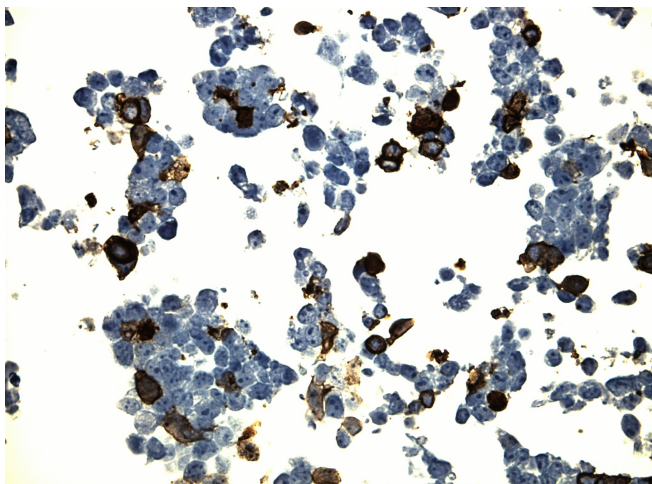
Product Type:	CytoSections
Description:	Transient overexpression of TGFB2, transcript variant 2, in HEK293T cells, FFPE control for IHC, ICC and ISH staining, 25 slides per pack
Species:	Human
Expression Host:	HEK293T
Expression cDNA Clone or AA Sequence:	TrueORF Clone RC219855
Tag:	C-MYC/DDK
Detection Antibodies:	DDK Rabbit monoclonal antibody, recognizing both N- and C-terminal tags (TA592569)
Target Detection Antibodies:	TGF beta Receptor II (TGFB2) Mouse Monoclonal Antibody [Clone ID: OTI3B4] (TA807912)
ACCN:	NM_003242 , NP_003233
Synonyms:	AAT3; FAA3; LDS1B; LDS2; LDS2B; MFS2; RIIC; TAAD2; TBR-ii; TBRII; TGFbeta-RII; TGFR-2
Storage:	Room Temperature
Stability:	Slides are guaranteed for a year from the date of receipt if proper storage instructions were followed.
Preparation:	HEK293T cells were transiently transfected with TrueORF cDNA plasmid. Transfected cells were cultured for 48hrs. After harvesting, the cultured cells were fixed in formalin & dehydrated before embedding in paraffin. 5 µm sections of the FFPE cell pellet blocks are cut and mounted on positively charged SuperFrost slides.
Note:	This product is for research use only and is not approved for use in humans or in clinical diagnosis.
RefSeq:	NP_003233
Locus ID:	7048
Cytogenetics:	3p24.1
Protein Families:	Druggable Genome, Protein Kinase, Transmembrane



[View online »](#)

Protein Pathways: Adherens junction, Chronic myeloid leukemia, Colorectal cancer, Cytokine-cytokine receptor interaction, Endocytosis, MAPK signaling pathway, Pancreatic cancer, Pathways in cancer, TGF-beta signaling pathway

Product images:



Immunohistochemistry staining on TGFBR2 overexpressed cytosection TS419855P5 with mouse anti DDK clone OTI11C3 C/N [TA180144] at 1:400 dilution 4C O/N. Antibody staining was achieved with HIER Citrate pH6 , Polink1 with DAB chromogen detection kit ([D11-18]). Positive stain shown with the brown chromogen present. HEK293T cells were transfected with cDNA clone [RC419855], 5 micron sections, 40x magnification