

Product datasheet for **TS415848P5**

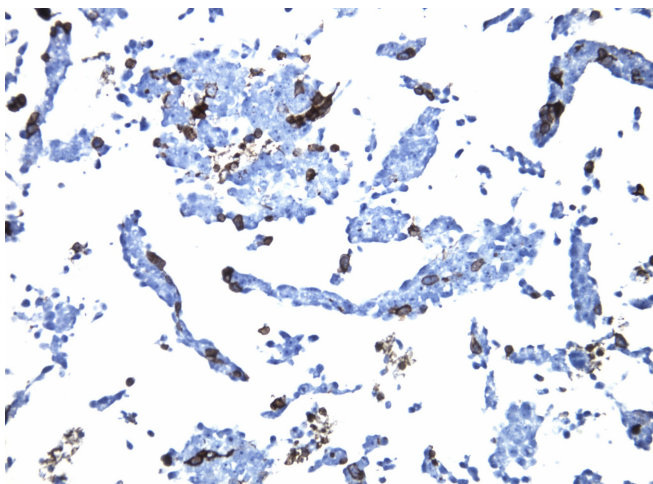
SIGLEC15 CytoSection

Product data:

Product Type:	CytoSections
Description:	Transient overexpression of SIGLEC15 in HEK293T cells, FFPE control for IHC, ICC and ISH staining, 25 slides per pack
Species:	Human
Expression Host:	HEK293T
Expression cDNA Clone or AA Sequence:	TrueORF Clone RC215848
Tag:	C-MYC/DDK
Detection Antibodies:	DDK Rabbit monoclonal antibody, recognizing both N- and C-terminal tags (TA592569)
ACCN:	<u>NM_213602</u> , <u>NP_998767</u>
Synonyms:	CD33L3; HsT1361; SIGLEC-15
Storage:	Room Temperature
Stability:	Slides are guaranteed for a year from the date of receipt if proper storage instructions were followed.
Preparation:	HEK293T cells were transiently transfected with TrueORF cDNA plasmid. Transfected cells were cultured for 48hrs. After harvesting, the cultured cells were fixed in formalin & dehydrated before embedding in paraffin. 5 µm sections of the FFPE cell pellet blocks are cut and mounted on positively charged SuperFrost slides.
Note:	This product is for research use only and is not approved for use in humans or in clinical diagnosis.
RefSeq:	<u>NP_998767</u>
Locus ID:	284266
Cytogenetics:	18q12.3
Protein Families:	Transmembrane



[View online »](#)

Product images:

Immunohistology staining on SIGLEC15 overexpressed cytosection TS415848P5 with mouse anti DDK clone OTI11C3 C/N [TA180144] at 1:400 dilution 4C O/N. Antibody staining was achieved with HIER Citrate pH6 , Polink1 with DAB chromogen detection kit ([D11-18]). Positive stain shown with the brown chromogen present. HEK293T cells were transfected with cDNA clone [RC215848], 5 micron sections, 40x magnification