

Product datasheet for **TS412583P5**

Her2 (ERBB2) CytoSection

Product data:

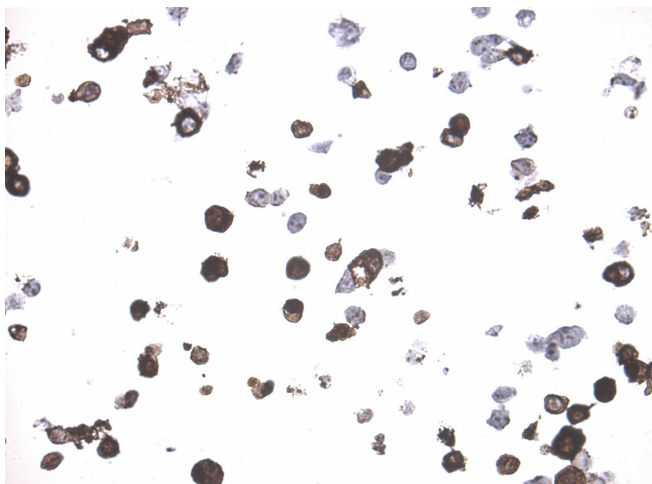
Product Type:	CytoSections
Description:	Transient overexpression of ERBB2, transcript variant 1, in HEK293T cells, FFPE control for IHC, ICC and ISH staining, 25 slides per pack
Species:	Human
Expression Host:	HEK293T
Expression cDNA Clone or AA Sequence:	TrueORF Clone RC212583
Tag:	C-MYC/DDK
Detection Antibodies:	DDK Rabbit monoclonal antibody, recognizing both N- and C-terminal tags (TA592569)
Target Detection Antibodies:	Her2 (ERBB2) Mouse Monoclonal Antibody [Clone ID: OTI4F10] (TA503443)
ACCN:	NM_004448 , NP_004439
Synonyms:	CD340; HER-2; HER-2/neu; HER2; MLN 19; NEU; NGL; TKR1
Storage:	Room Temperature
Stability:	Slides are guaranteed for a year from the date of receipt if proper storage instructions were followed.
Preparation:	HEK293T cells were transiently transfected with TrueORF cDNA plasmid. Transfected cells were cultured for 48hrs. After harvesting, the cultured cells were fixed in formalin & dehydrated before embedding in paraffin. 5 µm sections of the FFPE cell pellet blocks are cut and mounted on positively charged SuperFrost slides.
Note:	This product is for research use only and is not approved for use in humans or in clinical diagnosis.
RefSeq:	NP_004439
Locus ID:	2064
Cytogenetics:	17q12
Protein Families:	Druggable Genome, Protein Kinase, Transmembrane



[View online »](#)

Protein Pathways: Adherens junction, Bladder cancer, Calcium signaling pathway, Endometrial cancer, ErbB signaling pathway, Focal adhesion, Non-small cell lung cancer, Pancreatic cancer, Pathways in cancer, Prostate cancer

Product images:



Immunohistochemistry staining on ERBB2 overexpressed cytosection TS412583P5 with mouse anti DDK clone OTI11C3 C/N [TA180144] at 1:400 dilution 4C O/N. Antibody staining was achieved with HIER Citrate pH6 , Polink1 with DAB chromogen detection kit ([D11-18]). Positive stain shown with the brown chromogen present. HEK293T cells were transfected with cDNA clone [RC212583], 5 micron sections, 40x magnification