

Product datasheet for **TS405032P5**

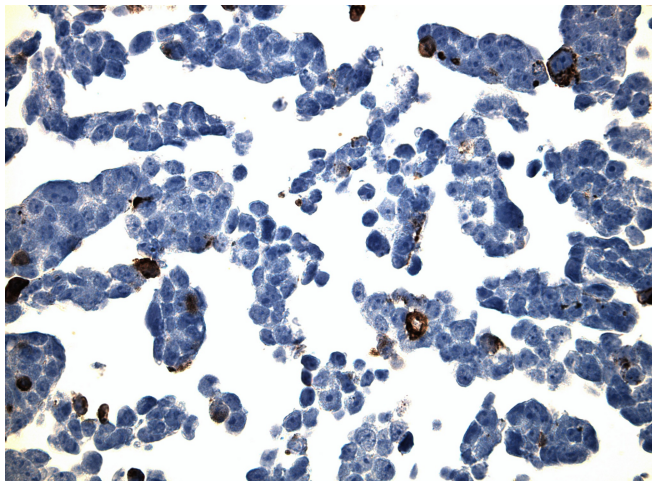
Claudin 20 (CLDN20) CytoSection

Product data:

Product Type:	CytoSections
Description:	Transient overexpression of CLDN20 in HEK293T cells, FFPE control for IHC, ICC and ISH staining, 25 slides per pack
Species:	Human
Expression Host:	HEK293T
Expression cDNA Clone or AA Sequence:	TrueORF Clone RC205032
Tag:	C-MYC/DDK
Detection Antibodies:	DDK Rabbit monoclonal antibody, recognizing both N- and C-terminal tags (TA592569)
ACCN:	<u>NM_001001346</u> , <u>NP_001001346</u>
Storage:	Room Temperature
Stability:	Slides are guaranteed for a year from the date of receipt if proper storage instructions were followed.
Preparation:	HEK293T cells were transiently transfected with TrueORF cDNA plasmid. Transfected cells were cultured for 48hrs. After harvesting, the cultured cells were fixed in formalin & dehydrated before embedding in paraffin. 5 µm sections of the FFPE cell pellet blocks are cut and mounted on positively charged SuperFrost slides.
Note:	This product is for research use only and is not approved for use in humans or in clinical diagnosis.
RefSeq:	<u>NP_001001346</u>
Locus ID:	49861
Cytogenetics:	6q25.3
Protein Families:	Transmembrane
Protein Pathways:	Cell adhesion molecules (CAMs), Leukocyte transendothelial migration, Tight junction



[View online »](#)

Product images:

Immunohistology staining on CLDN20 overexpressed cytosection TS405032P5 with rabbit anti DDK clone OTIR5G2 C/N [TA592569] at 1:2000 dilution 20m RT. Antibody staining was achieved with HIER Citrate pH6 , Polink1 with DAB chromogen detection kit ([D11-18]). Positive stain shown with the brown chromogen present. HEK293T cells were transfected with cDNA clone [RC205032], 5 micron sections, 40x magnification