

Product datasheet for **TS404609P5**

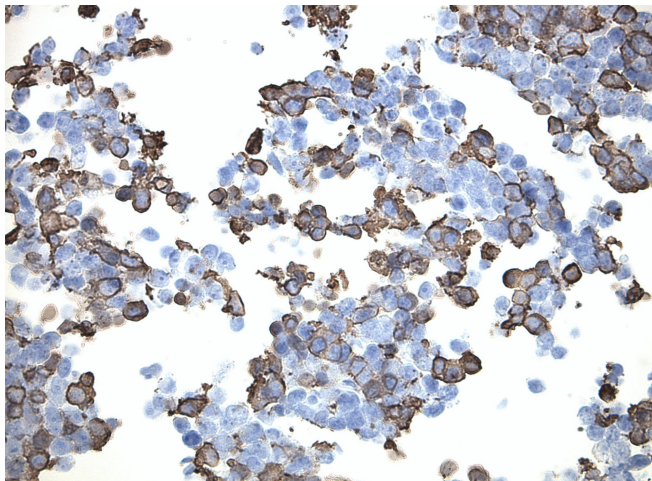
LYVE1 CytoSection

Product data:

Product Type:	CytoSections
Description:	Transient overexpression of LYVE1 in HEK293T cells, FFPE control for IHC, ICC and ISH staining, 25 slides per pack
Species:	Human
Expression Host:	HEK293T
Expression cDNA Clone or AA Sequence:	TrueORF Clone RC204609
Tag:	C-MYC/DDK
Detection Antibodies:	DDK Rabbit monoclonal antibody, recognizing both N- and C-terminal tags (TA592569)
Target Detection Antibodies:	LYVE1 Mouse Monoclonal Antibody [Clone ID: OTI5D11] (TA812230)
ACCN:	NM_006691 , NP_006682
Synonyms:	CRSBP-1; HAR; LYVE-1; XLKD1
Storage:	Room Temperature
Stability:	Slides are guaranteed for a year from the date of receipt if proper storage instructions were followed.
Preparation:	HEK293T cells were transiently transfected with TrueORF cDNA plasmid. Transfected cells were cultured for 48hrs. After harvesting, the cultured cells were fixed in formalin & dehydrated before embedding in paraffin. 5 µm sections of the FFPE cell pellet blocks are cut and mounted on positively charged SuperFrost slides.
Note:	This product is for research use only and is not approved for use in humans or in clinical diagnosis.
RefSeq:	NP_006682
Locus ID:	10894
Cytogenetics:	11p15.4
Protein Families:	Druggable Genome, Transmembrane



[View online »](#)

Product images:

Immunohistology staining on LYVE1 overexpressed cytosection TS404609P5 with rabbit anti DDK clone OTIR5G2 C/N [TA592569] at 1:2000 dilution 5m RT. Antibody staining was achieved with HIER Citrate pH6 , Polink1 with DAB chromogen detection kit ([D11-18]). Positive stain shown with the brown chromogen present. HEK293T cells were transfected with cDNA clone , 5 micron sections, 40x magnification