

Product datasheet for **TP790205**

Blot 14 *Blomia tropicalis* Recombinant Protein

Product data:

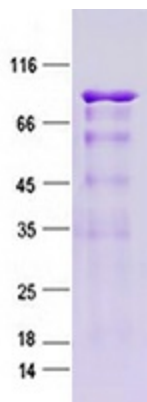
Product Type:	Recombinant Proteins
Description:	Purified recombinant protein of group 14 allergen Blo t 14,full length□463Asn,464Lys,465Lys,650Lys,680Phe□, with N-terminal His tag, expressed in E.coli, 50ug
Species:	<i>Blomia tropicalis</i>
Expression Host:	E. coli
Expression cDNA Clone or AA Sequence:	<pre> 1 MGSSHHHHHH SSGLVPRGSH MSAVGTANSH EHLAQLEVTY PKDAPKEVKL LLKSPENSFE 61 TKFALNLDAS RNLDIKLNL PHLIDIHLKNQ FEKDKETNLM KNDMVLEYKF PNDETVHTLK 121 THHELGYNLK RINGKDKVANF DFKSKFESSR RPFLNHRSLV QFKYRYPYKLQ ELVLEFGYGE 181 KMDNVYKFSR ISKIDVQEFK PFKMNSSETDL NIVATDFDVD YEIKADNRVL NDRGNALEFD 241 MNLKGKDRSK RAAENGNQEI EGKIKYRNKG SAVDSKLEAS LKGVGHDFAW NSELKQVEPQ 301 KYEGKITIQT EKDKKIFITH KEEISKPTKE IHFKSEADIS YSYKPKDKTY VMEAKKQGTA 361 YILKGEAKKD GTVIFSNDIN FESSNGNLKA LIKRDTRSVD LNVDNVFRPR EATLLFKIKD 421 REYNIKMDRE PFKYINLKVD GNENALIKNG KAHLSIMDPT TLNLVTKANS NVDFSMDLFA 481 SINKKIALKI DSPKYNFFHD GDIDLSIVNR RLLWKS LTKK DDREYKFAD IARKGSMISL 541 TKVTPDRTSS VQYSRNGEKI EVNIDTEYLE GKVEGDRFSG KIVLKNKQND YELESTYKRE 601 NGRLVIESVN GKNAKMEAVF SRKEPSKFLV ETPNTKAKID MDLTAPVKTF KLDFDNPRYQ 661 KKIDASMEPK SKFKYSSYSN QKNEKKERKI EIDGVHMKEF NVDIDFPDFK FKVKQPESK 721 KVEFSYTFNN YTETEEYDFD PHKAYLVNWW NALRQYVQTF VVQN </pre>
Tag:	N-His
Predicted MW:	88.5 kDa
Concentration:	>0.05 µg/µL as determined by microplate BCA method
Purity:	> 80% as determined by SDS-PAGE and Coomassie blue staining
Buffer:	50 mM Tris-HCl, pH 8.0, 500 mM NaCl, 8 M urea
Note:	For testing in cell culture applications, please filter before use. Note that you may experience some loss of protein during the filtration process.
Storage:	Store at -80°C after receiving vials.
Stability:	Stable for 12 months from the date of receipt of the product under proper storage and handling conditions. Avoid repeated freeze-thaw cycles.



[View online »](#)

Locus ID: ABU97467

Product images:



Purified recombinant protein Blot 14 was analyzed by SDS-PAGE gel and Coomassie Blue Staining.