

## Product datasheet for **TP790040**

### mCherry Escherichia coli Recombinant Protein

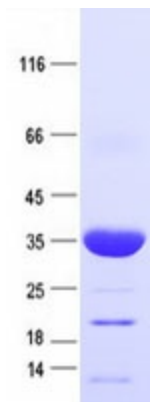
#### Product data:

Product Type:	Recombinant Proteins
Description:	Purified fluorescent protein mCherry, with N-terminal HIS tag, expressed in E. coli, 250ug
Species:	Escherichia coli
Expression Host:	E. coli
Expression cDNA Clone or AA Sequence:	MVSKGEEDNM AIIKEFMRFK VHMEGSVNGH EFEIEGEGEG RPYEGTQTAK LKVTKGGPLP FAWDILSPQF MYGSKAYVKH PADIPDYKLK SFPEGFKWER VMNFEDGGVV TVTQDSSLQD GEFYKVKLR GTNFPSDGPV MQKKTMGWEA SSERMYPEDG ALKGEIKQRL KLKDGGHYDA EVKTTYKAKK PVQLPGAYNV NIKLDITSHN EDYTIVEQYE RAEGRHSTGG MDELYK
Tag:	N-His
Predicted MW:	26.5 kDa
Concentration:	>0.1 µg/µL as determined by microplate BCA method
Purity:	> 80% as determined by SDS-PAGE and Coomassie blue staining
Buffer:	PBS, pH 7.4, 10% glycerol
Bioactivity:	WB standard (PMID: <a href="https://pubmed.ncbi.nlm.nih.gov/27683217/">27683217</a> )
Note:	For testing in cell culture applications, please filter before use. Note that you may experience some loss of protein during the filtration process.
Storage:	Store at -80°C.
Stability:	Stable for 12 months from the date of receipt of the product under proper storage and handling conditions. Avoid repeated freeze-thaw cycles.
RefSeq:	<a href="https://www.ncbi.nlm.nih.gov/RefSeq/ accession/taxonomy/NC_009416.3/ gene/27683217">AHE38497</a>



[View online »](#)

Product images:



	mCherry-U2AF35	mEGFP-U2AF65	mEGFP-U2B <sup>7</sup>
Concentration in splicing (μM)	0.2	1.3	1.4
% labeled:unlabeled on RNA aff. purifn.	75:25	69:31	49:51
Molecules bleaching in 2 versus 1 steps, -ATP	33:189*	33:243*	39:162
Molecules bleaching in 2 versus 1 steps, +ATP	21:218*	25:186*	30:252

U2AF35, U2AF65, and U2 snRNP splicing and complexing assay. Nuclear extracts were prepared from HEK293T cells expressing either mEGFP-U2B, mEGFP-SF3A3 or both mEGFP-U2AF65 and mCherry-U2AF35. The absolute and relative levels of functional labeled protein and their extent of dimerization were measured using Western blotting after affinity purification on RNA and single-molecule methods. OriGene TP790040 served as an mCherry concentration standard. Figure cited from Nucleic Acids Res, PMID: 27683217