

## Product datasheet for **TP790024**

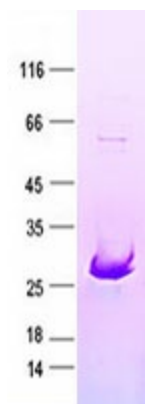
### TEV protease Tobacco etch virus Recombinant Protein

#### Product data:

|  |  |
|--|--|
| <b>Product Type:</b>                         | Recombinant Proteins   |
| <b>Description:</b>                          | Purified recombinant protein of TEV protease, with N-terminal HIS tag, expressed in E.Coli   |
| <b>Species:</b>                              | Tobacco etch virus   |
| <b>Expression Host:</b>                      | E. coli  |
| <b>Expression cDNA Clone or AA Sequence:</b> | MHHHHHMGGE SLFKGPRDYN PISSTICHLT NESDGHTTSL YGIGFGPFII TNKHLFRRNN GTLLVQSLHG VFKVKNTTTL QQHLIDGRDM IIRMPKDFP PFPQKLFRE PQRERICLV TTNFQTKSMS SMVSDTSCTF PSSDGIFWKH WIQTKDGQCG SPLVSTRDGF IVGIHSASNF TNTNNYFTSV PKNFMELLTN QEAQQWVSGW RLNADSVLWG GHKVMVKPE EPFQPVKEAT QLMN |
| <b>Tag:</b>                                  | N-HIS  |
| <b>Predicted MW:</b>                         | 27.8KDa  |
| <b>Concentration:</b>                        | >0.05 µg/µL as determined by microplate BCA method   |
| <b>Purity:</b>                               | > 90% as determined by SDS-PAGE and Coomassie blue staining  |
| <b>Buffer:</b>                               | 25 mM Tris-HCl, pH 8.0, 150 mM NaCl, 1 mM EDTA, 5 mM DTT, 50% glycerol   |
| <b>Bioactivity:</b>                          | 1 unit is defined as the amount of enzyme required to cleave 3 µg of a substrate protein to 85% completion in 1 hours at 30°C.   |
| <b>Endotoxin:</b>                            | < 1 EU per 1 µg of the protein by the LAL  |
| <b>Note:</b>                                 | For testing in cell culture applications, please filter before use. Note that you may experience some loss of protein during the filtration process.   |
| <b>Storage:</b>                              | Store at -20°C.  |
| <b>Stability:</b>                            | Stable for 12 months from the date of receipt of the product under proper storage and handling conditions. Avoid repeated freeze-thaw cycles.  |



[View online »](#)

**Product images:**

Purified recombinant protein TEV protease was analyzed by SDS-PAGE gel and Coomassie Blue Staining.