

## Product datasheet for **TP762716**

### Langerin (CD207) (NM\_015717) Human Recombinant Protein

#### Product data:

Product Type:	Recombinant Proteins
Description:	Purified recombinant protein of Human CD207 molecule, langerin (CD207), 80Leu-End, with N-terminal His tag, expressed in E.coli, 50ug
Species:	Human
Expression Host:	E. coli
Expression cDNA Clone or AA Sequence:	A DNA sequence encoding the region [80Leu-End] of CD207
Tag:	N-His
Predicted MW:	30.4 kDa
Concentration:	>0.05 ug/ul as determined by microplate BCA method
Purity:	> 80% as determined by SDS-PAGE and Coomassie blue staining
Buffer:	25mM Tris, 150mM NaCl, 10% glycerol, pH8.0, 1% SKL
Storage:	Store at -80°C after receiving vials.
Stability:	Stable for at least 1 year from receipt of products under proper storage and handling conditions. Avoid repeated freeze-thaw cycles.
RefSeq:	<a href="#">NP_056532</a>
Locus ID:	50489
UniProt ID:	<a href="#">Q9UJ71</a>
RefSeq Size:	1886
Cytogenetics:	2p13.3
RefSeq ORF:	984
Synonyms:	CLEC4K



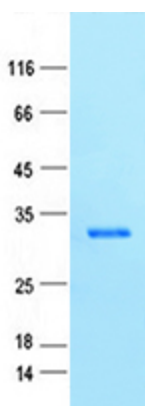
[View online »](#)

**Summary:**

The protein encoded by this gene is expressed only in Langerhans cells which are immature dendritic cells of the epidermis and mucosa. It is localized in the Birbeck granules, organelles present in the cytoplasm of Langerhans cells and consisting of superimposed and zippered membranes. It is a C-type lectin with mannose binding specificity, and it has been proposed that mannose binding by this protein leads to internalization of antigen into Birbeck granules and providing access to a nonclassical antigen-processing pathway. Mutations in this gene result in Birbeck granules deficiency or loss of sugar binding activity. [provided by RefSeq, Aug 2010]

**Protein Families:**

Druggable Genome, Transmembrane

**Product images:**

Coomassie blue staining of purified CD207 protein (Cat #TP762716). The protein was produced from E.coli.