

Product datasheet for **TP762712**

CD1 (CD1A) (NM_001763) Human Recombinant Protein

Product data:

Product Type:	Recombinant Proteins
Description:	Purified recombinant protein of Human CD1a molecule (CD1A), 17Asn-300Val, with N-terminal His tag, expressed in E.coli, 50ug
Species:	Human
Expression Host:	E. coli
Expression cDNA Clone or AA Sequence:	A DNA sequence encoding the region (17Asn-300Val) of CD1A
Tag:	N-His
Predicted MW:	34.7 kDa
Concentration:	>0.05 ug/ul as determined by microplate BCA method
Purity:	> 80% as determined by SDS-PAGE and Coomassie blue staining
Buffer:	25mM Tris, 150mM NaCl, 10% glycerol, pH8.0, 1% SKL
Storage:	Store at -80°C after receiving vials.
Stability:	Stable for at least 1 year from receipt of products under proper storage and handling conditions. Avoid repeated freeze-thaw cycles.
RefSeq:	NP_001754
Locus ID:	909
UniProt ID:	P06126
RefSeq Size:	2072
Cytogenetics:	1q23.1
RefSeq ORF:	981
Synonyms:	CD1; FCB6; HTA1; R4; T6



[View online »](#)

Summary:

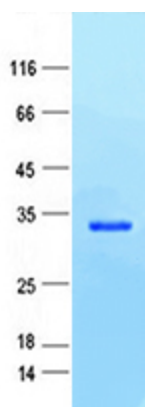
This gene encodes a member of the CD1 family of transmembrane glycoproteins, which are structurally related to the major histocompatibility complex (MHC) proteins and form heterodimers with beta-2-microglobulin. The CD1 proteins mediate the presentation of primarily lipid and glycolipid antigens of self or microbial origin to T cells. The human genome contains five CD1 family genes organized in a cluster on chromosome 1. The CD1 family members are thought to differ in their cellular localization and specificity for particular lipid ligands. The protein encoded by this gene localizes to the plasma membrane and to recycling vesicles of the early endocytic system. Alternative splicing results in multiple transcript variants. [provided by RefSeq, Mar 2016]

Protein Families:

Druggable Genome, Transmembrane

Protein Pathways:

Hematopoietic cell lineage

Product images:

Coomassie blue staining of purified CD1A protein (Cat #TP762712). The protein was produced from E.coli.