

Product datasheet for **TP762680**

ROR2 (NM_004560) Human Recombinant Protein

Product data:

Product Type:	Recombinant Proteins
Description:	Purified recombinant protein of Human receptor tyrosine kinase-like orphan receptor 2 (ROR2)
Species:	Human
Expression Host:	E. coli
Expression cDNA Clone or AA Sequence:	A DNA sequence encoding the region(34Glu-403Gly) of ROR2
Tag:	N-His
Predicted MW:	41.3 kDa
Concentration:	>0.05 µg/µL as determined by microplate BCA method
Purity:	> 80% as determined by SDS-PAGE and Coomassie blue staining
Buffer:	25 mM Tris-HCl, pH 8.0, 150 mM NaCl, 1% sarkosyl, 10% glycerol
Note:	For testing in cell culture applications, please filter before use. Note that you may experience some loss of protein during the filtration process.
Storage:	Store at -80°C after receiving vials.
Stability:	Stable for 12 months from the date of receipt of the product under proper storage and handling conditions. Avoid repeated freeze-thaw cycles.
RefSeq:	NP_004551
Locus ID:	4920
UniProt ID:	Q01974
RefSeq Size:	4091
Cytogenetics:	9q22.31
RefSeq ORF:	2829
Synonyms:	BDB; BDB1; NTRKR2



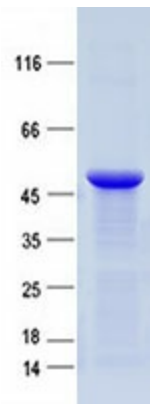
[View online »](#)

Summary:

The protein encoded by this gene is a receptor protein tyrosine kinase and type I transmembrane protein that belongs to the ROR subfamily of cell surface receptors. The protein may be involved in the early formation of the chondrocytes and may be required for cartilage and growth plate development. Mutations in this gene can cause brachydactyly type B, a skeletal disorder characterized by hypoplasia/aplasia of distal phalanges and nails. In addition, mutations in this gene can cause the autosomal recessive form of Robinow syndrome, which is characterized by skeletal dysplasia with generalized limb bone shortening, segmental defects of the spine, brachydactyly, and a dysmorphic facial appearance. [provided by RefSeq, Jul 2008]

Protein Families:

Druggable Genome, Protein Kinase, Transmembrane

Product images:

Purified recombinant protein ROR2 was analyzed by SDS-PAGE gel and Coomassie Blue Staining.