

Product datasheet for **TP762670**

PLA2R (PLA2R1) (NM_001007267) Human Recombinant Protein

Product data:

Product Type:	Recombinant Proteins
Description:	Purified recombinant protein of Human phospholipase A2 receptor 1, 180kDa (PLA2R1), transcript variant 2
Species:	Human
Expression Host:	E. coli
Expression cDNA Clone or AA Sequence:	A DNA sequence encoding the region(385Tyr-643Cys) of PLA2R1
Tag:	N-His
Predicted MW:	29.8 kDa
Concentration:	>0.05 µg/µL as determined by microplate BCA method
Purity:	> 80% as determined by SDS-PAGE and Coomassie blue staining
Buffer:	25 mM Tris-HCl, pH 8.0, 150 mM NaCl, 1% sarkosyl, 10% glycerol
Note:	For testing in cell culture applications, please filter before use. Note that you may experience some loss of protein during the filtration process.
Storage:	Store at -80°C after receiving vials.
Stability:	Stable for 12 months from the date of receipt of the product under proper storage and handling conditions. Avoid repeated freeze-thaw cycles.
RefSeq:	NP_001007268
Locus ID:	22925
UniProt ID:	Q13018
RefSeq Size:	5160
Cytogenetics:	2q24.2
RefSeq ORF:	3972
Synonyms:	CLEC13C; PLA2-R; PLA2G1R; PLA2IR; PLA2R



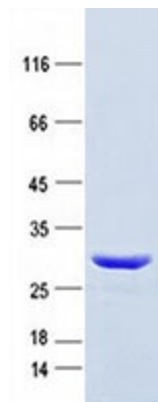
[View online »](#)

Summary:

This gene represents a phospholipase A2 receptor. The encoded protein likely exists as both a transmembrane form and a soluble form. The transmembrane receptor may play a role in clearance of phospholipase A2, thereby inhibiting its action. Polymorphisms at this locus have been associated with susceptibility to idiopathic membranous nephropathy. Alternatively spliced transcript variants encoding different isoforms have been identified.[provided by RefSeq, Sep 2010]

Protein Families:

Druggable Genome, Transmembrane

Product images:

Purified recombinant protein PLA2R1 was analyzed by SDS-PAGE gel and Coomassie Blue Staining.