

Product datasheet for **TP762666**

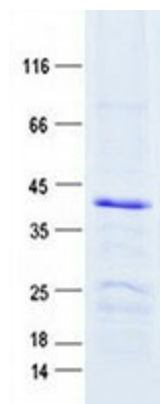
INSM1 (NM_002196) Human Recombinant Protein

Product data:

Product Type:	Recombinant Proteins
Description:	Purified recombinant protein of Human insulinoma-associated 1 (INSM1), 251Glu-End
Species:	Human
Expression Host:	E. coli
Expression cDNA Clone or AA Sequence:	A DNA sequence encoding the region(251Glu-End) of INSM1
Tag:	N-His
Predicted MW:	27.9 kDa
Concentration:	>0.05 µg/µL as determined by microplate BCA method
Purity:	> 80% as determined by SDS-PAGE and Coomassie blue staining
Buffer:	25 mM Tris-HCl, pH 8.0, 150 mM NaCl, 1% sarkosyl, 10% glycerol
Note:	For testing in cell culture applications, please filter before use. Note that you may experience some loss of protein during the filtration process.
Storage:	Store at -80°C after receiving vials.
Stability:	Stable for 12 months from the date of receipt of the product under proper storage and handling conditions. Avoid repeated freeze-thaw cycles.
RefSeq:	NP_002187
Locus ID:	3642
UniProt ID:	Q01101
RefSeq Size:	2838
Cytogenetics:	20p11.23
RefSeq ORF:	1530
Synonyms:	IA-1; IA1
Summary:	Insulinoma-associated 1 (INSM1) gene is intronless and encodes a protein containing both a zinc finger DNA-binding domain and a putative prohormone domain. This gene is a sensitive marker for neuroendocrine differentiation of human lung tumors. [provided by RefSeq, Jul 2008]



[View online »](#)

Product images:

Purified recombinant protein INSM1 was analyzed by SDS-PAGE gel and Coomassie Blue Staining.