

## Product datasheet for **TP762665**

### KCNIP4 (NM\_147182) Human Recombinant Protein

#### Product data:

Product Type:	Recombinant Proteins
Description:	Purified recombinant protein of Human Kv channel interacting protein 4 (KCNIP4), transcript variant 3
Species:	Human
Expression Host:	E. coli
Expression cDNA Clone or AA Sequence:	A DNA sequence encoding the region full length of KCNIP4
Tag:	N-GST and C-HIS
Predicted MW:	56.7 kDa
Concentration:	>0.05 µg/µL as determined by microplate BCA method
Purity:	> 80% as determined by SDS-PAGE and Coomassie blue staining
Buffer:	50 mM Tris-HCl, pH 8.0, 8 M urea
Note:	For testing in cell culture applications, please filter before use. Note that you may experience some loss of protein during the filtration process.
Storage:	Store at -80°C after receiving vials.
Stability:	Stable for 12 months from the date of receipt of the product under proper storage and handling conditions. Avoid repeated freeze-thaw cycles.
RefSeq:	<a href="#">NP_671711</a>
Locus ID:	80333
UniProt ID:	<a href="#">Q6PIL6</a>
RefSeq Size:	2371
Cytogenetics:	4p15.31-p15.2
RefSeq ORF:	753
Synonyms:	CALP; KCHIP4



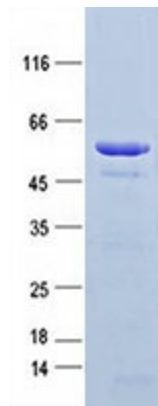
[View online »](#)

**Summary:**

This gene encodes a member of the family of voltage-gated potassium (Kv) channel-interacting proteins (KCNIPs), which belong to the recoverin branch of the EF-hand superfamily. Members of the KCNIP family are small calcium binding proteins. They all have EF-hand-like domains, and differ from each other in the N-terminus. They are integral subunit components of native Kv4 channel complexes. They may regulate A-type currents, and hence neuronal excitability, in response to changes in intracellular calcium. This protein member also interacts with presenilin. Multiple alternatively spliced transcript variants encoding distinct isoforms have been identified for this gene. [provided by RefSeq, Jul 2008]

**Protein Families:**

Druggable Genome, Ion Channels: Other

**Product images:**

Purified recombinant protein KCNIP4 was analyzed by SDS-PAGE gel and Coomassie Blue Staining.