

Product datasheet for **TP762655**

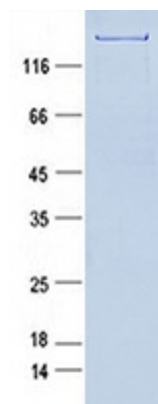
GIGYF1 (NM_022574) Human Recombinant Protein

Product data:

Product Type:	Recombinant Proteins
Description:	Purified recombinant protein of Human GRB10 interacting GYF protein 1 (GIGYF1)
Species:	Human
Expression Host:	E. coli
Expression cDNA Clone or AA Sequence:	A DNA sequence encoding the region full length of GIGYF1
Tag:	N-GST and C-HIS
Predicted MW:	142.6 kDa
Concentration:	>0.05 µg/µL as determined by microplate BCA method
Purity:	> 80% as determined by SDS-PAGE and Coomassie blue staining
Buffer:	50 mM Tris-HCl, pH 8.0, 8 M urea
Note:	For testing in cell culture applications, please filter before use. Note that you may experience some loss of protein during the filtration process.
Storage:	Store at -80°C after receiving vials.
Stability:	Stable for 12 months from the date of receipt of the product under proper storage and handling conditions. Avoid repeated freeze-thaw cycles.
RefSeq:	NP_072096
Locus ID:	64599
UniProt ID:	O75420
RefSeq Size:	6329
Cytogenetics:	7q22.1
RefSeq ORF:	3105
Synonyms:	GYF1; PERQ1
Summary:	This gene encodes a member of the gyf family of adaptor proteins. The encoded protein contains a gyf protein interaction domain. It binds growth factor receptor bound 10, another adaptor protein that binds activated insulin-like growth factor 1 and insulin receptors and regulates receptor signaling. [provided by RefSeq, Apr 2017]



[View online »](#)

Product images:

Purified recombinant protein GIGYF1 was analyzed by SDS-PAGE gel and Coomassie Blue Staining.