

## Product datasheet for **TP762641**

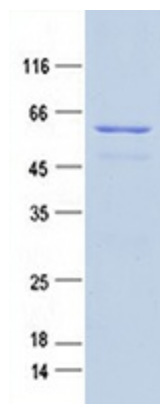
### Homeobox protein SIX6 (SIX6) (NM\_007374) Human Recombinant Protein

#### Product data:

Product Type:	Recombinant Proteins
Description:	Purified recombinant protein of Human SIX homeobox 6 (SIX6)
Species:	Human
Expression Host:	E. coli
Expression cDNA Clone or AA Sequence:	A DNA sequence encoding the region full length of SIX6
Tag:	N-GST and C-HIS
Predicted MW:	55.7 kDa
Concentration:	>0.05 µg/µL as determined by microplate BCA method
Purity:	> 80% as determined by SDS-PAGE and Coomassie blue staining
Buffer:	50 mM Tris-HCl, pH 8.0, 8 M urea
Note:	For testing in cell culture applications, please filter before use. Note that you may experience some loss of protein during the filtration process.
Storage:	Store at -80°C after receiving vials.
Stability:	Stable for 12 months from the date of receipt of the product under proper storage and handling conditions. Avoid repeated freeze-thaw cycles.
RefSeq:	<a href="#">NP_031400</a>
Locus ID:	4990
UniProt ID:	<a href="#">O95475</a> , <a href="#">Q6P051</a>
RefSeq Size:	1500
Cytogenetics:	14q23.1
RefSeq ORF:	738
Synonyms:	MCOPCT2; ODRMD; OPTX2; Six9
Summary:	The protein encoded by this gene is a homeobox protein that is similar to the Drosophila 'sine oculis' gene product. This gene is found in a cluster of related genes on chromosome 14 and is thought to be involved in eye development. Defects in this gene are a cause of isolated microphthalmia with cataract type 2 (MCOPCT2). [provided by RefSeq, Jul 2008]



[View online »](#)

**Product images:**

Purified recombinant protein SIX6 was analyzed by SDS-PAGE gel and Coomassie Blue Staining.