

## Product datasheet for **TP762636**

### **PBXIP1 (NM\_020524) Human Recombinant Protein**

#### **Product data:**

<b>Product Type:</b>	Recombinant Proteins
<b>Description:</b>	Purified recombinant protein of Human pre-B-cell leukemia homeobox interacting protein 1 (PBXIP1)
<b>Species:</b>	Human
<b>Expression Host:</b>	E. coli
<b>Expression cDNA Clone or AA Sequence:</b>	A DNA sequence encoding the region full length of PBXIP1
<b>Tag:</b>	N-GST and C-HIS
<b>Predicted MW:</b>	108.6 kDa
<b>Concentration:</b>	>0.05 µg/µL as determined by microplate BCA method
<b>Purity:</b>	> 80% as determined by SDS-PAGE and Coomassie blue staining
<b>Buffer:</b>	50 mM Tris-HCl, pH 8.0, 8 M urea
<b>Note:</b>	For testing in cell culture applications, please filter before use. Note that you may experience some loss of protein during the filtration process.
<b>Storage:</b>	Store at -80°C after receiving vials.
<b>Stability:</b>	Stable for 12 months from the date of receipt of the product under proper storage and handling conditions. Avoid repeated freeze-thaw cycles.
<b>RefSeq:</b>	<a href="#">NP_065385</a>
<b>Locus ID:</b>	57326
<b>UniProt ID:</b>	<a href="#">Q96AQ6</a>
<b>RefSeq Size:</b>	3213
<b>Cytogenetics:</b>	1q21.3
<b>RefSeq ORF:</b>	2193
<b>Synonyms:</b>	HPIP



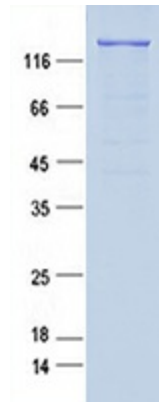
[View online »](#)

**Summary:**

The protein encoded by this gene interacts with the PBX1 homeodomain protein, inhibiting its transcriptional activation potential by preventing its binding to DNA. The encoded protein, which is primarily cytosolic but can shuttle to the nucleus, also can interact with estrogen receptors alpha and beta and promote the proliferation of breast cancer, brain tumors, and lung cancer. Several transcript variants encoding different isoforms have been found for this gene. More variants exist, but their full-length natures have yet to be determined. [provided by RefSeq, Dec 2015]

**Protein Families:**

Transcription Factors

**Product images:**

Purified recombinant protein PBXIP1 was analyzed by SDS-PAGE gel and Coomassie Blue Staining.