

Product datasheet for **TP762632**

ATG16L1 (NM_030803) Human Recombinant Protein

Product data:

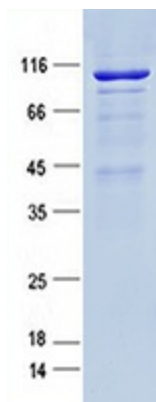
Product Type:	Recombinant Proteins
Description:	Purified recombinant protein of Human ATG16 autophagy related 16-like 1 (<i>S. cerevisiae</i>) (ATG16L1), transcript variant 1
Species:	Human
Expression Host:	<i>E. coli</i>
Expression cDNA Clone or AA Sequence:	A DNA sequence encoding the region full length of ATG16L1
Tag:	N-GST and C-HIS
Predicted MW:	96.3 kDa
Concentration:	>0.05 µg/µL as determined by microplate BCA method
Purity:	> 80% as determined by SDS-PAGE and Coomassie blue staining
Buffer:	50 mM Tris-HCl, pH 8.0, 8 M urea
Note:	For testing in cell culture applications, please filter before use. Note that you may experience some loss of protein during the filtration process.
Storage:	Store at -80°C after receiving vials.
Stability:	Stable for 12 months from the date of receipt of the product under proper storage and handling conditions. Avoid repeated freeze-thaw cycles.
RefSeq:	NP_110430
Locus ID:	55054
UniProt ID:	Q676U5 , Q17RG0
RefSeq Size:	3411
Cytogenetics:	2q37.1
RefSeq ORF:	1821
Synonyms:	APG16L; ATG16A; ATG16L; IBD10; WDR30



[View online »](#)

Summary:

The protein encoded by this gene is part of a large protein complex that is necessary for autophagy, the major process by which intracellular components are targeted to lysosomes for degradation. Defects in this gene are a cause of susceptibility to inflammatory bowel disease type 10 (IBD10). Several transcript variants encoding different isoforms have been found for this gene.[provided by RefSeq, Jun 2010]

Product images:

Purified recombinant protein ATG16L1 was analyzed by SDS-PAGE gel and Coomassie Blue Staining.