

## Product datasheet for **TP762629**

### CHRD1 (NM\_145234) Human Recombinant Protein

#### Product data:

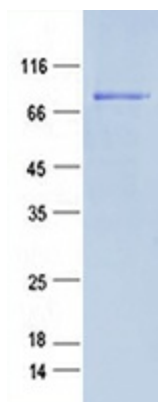
Product Type:	Recombinant Proteins
Description:	Purified recombinant protein of Human chordin-like 1 (CHRD1), transcript variant 3
Species:	Human
Expression Host:	E. coli
Expression cDNA Clone or AA Sequence:	A DNA sequence encoding the region full length of CHRD1
Tag:	N-GST and C-HIS
Predicted MW:	80.2 kDa
Concentration:	>0.05 µg/µL as determined by microplate BCA method
Purity:	> 80% as determined by SDS-PAGE and Coomassie blue staining
Buffer:	50 mM Tris-HCl, pH 8.0, 8 M urea
Note:	For testing in cell culture applications, please filter before use. Note that you may experience some loss of protein during the filtration process.
Storage:	Store at -80°C after receiving vials.
Stability:	Stable for 12 months from the date of receipt of the product under proper storage and handling conditions. Avoid repeated freeze-thaw cycles.
RefSeq:	<a href="#">NP_660277</a>
Locus ID:	91851
UniProt ID:	<a href="#">Q9BU40</a>
RefSeq Size:	3943
Cytogenetics:	Xq23
RefSeq ORF:	1368
Synonyms:	CHL; dA141H5.1; MGC1; MGCN; NRLN1; VOPT
Summary:	This gene encodes an antagonist of bone morphogenetic protein 4. The encoded protein may play a role in topographic retinotectal projection and in the regulation of retinal angiogenesis in response to hypoxia. Alternatively spliced transcript variants encoding different isoforms have been described. [provided by RefSeq, Jan 2009]



[View online »](#)

Protein Families: ES Cell Differentiation/IPS, Secreted Protein

### Product images:



Purified recombinant protein CHRDL1 was analyzed by SDS-PAGE gel and Coomossie Blue Staining.